

Anti-Katanin catalytic subunit A1 Recombinant Rabbit Monoclonal Antibody



Catalog #: 3978

Aliases

KATNA1; Katanin Catalytic Subunit A1; Katanin P60 (ATPase Containing) Subunit A 1; Katanin P60 ATPase-Containing Subunit A1; Katanin P60 Subunit A1; P60 Katanin; Katanin P60 (ATPase-Containing) Subunit A 1; EC 5.6.1.1; EC 3.6.4.3

Background

Gene Name: KATNA1

NCBI Gene Entry: [11104](#)

UniProt Entry: [O75449](#)

Application Information

Molecular Weight: Predicted, 56 kDa; observed, 49 kDa

Clonality: Rabbit monoclonal antibody

Clone ID: 24GB8980

Species Reactivity: Human

Applications Tested: Western blotting (WB), flow cytometry (FCM), immunocytochemistry (IC)

Immunogen

A synthesized peptide derived from human p60 katanin

Isotype

Rabbit IgG

Storage Buffer

Supplied in PBS (pH 7.4) containing 50% glycerol, and 0.02% sodium azide.

Storage

Store at -20 °C for one year.

Recommended Dilutions

Western Blotting (WB): 1:1,000-1:5,000

Flow Cytometry (FCM): 1:2,000

Immunocytochemistry (IC): 1:100-1:1,000

Note: This product is for research use only.

SUPPORT

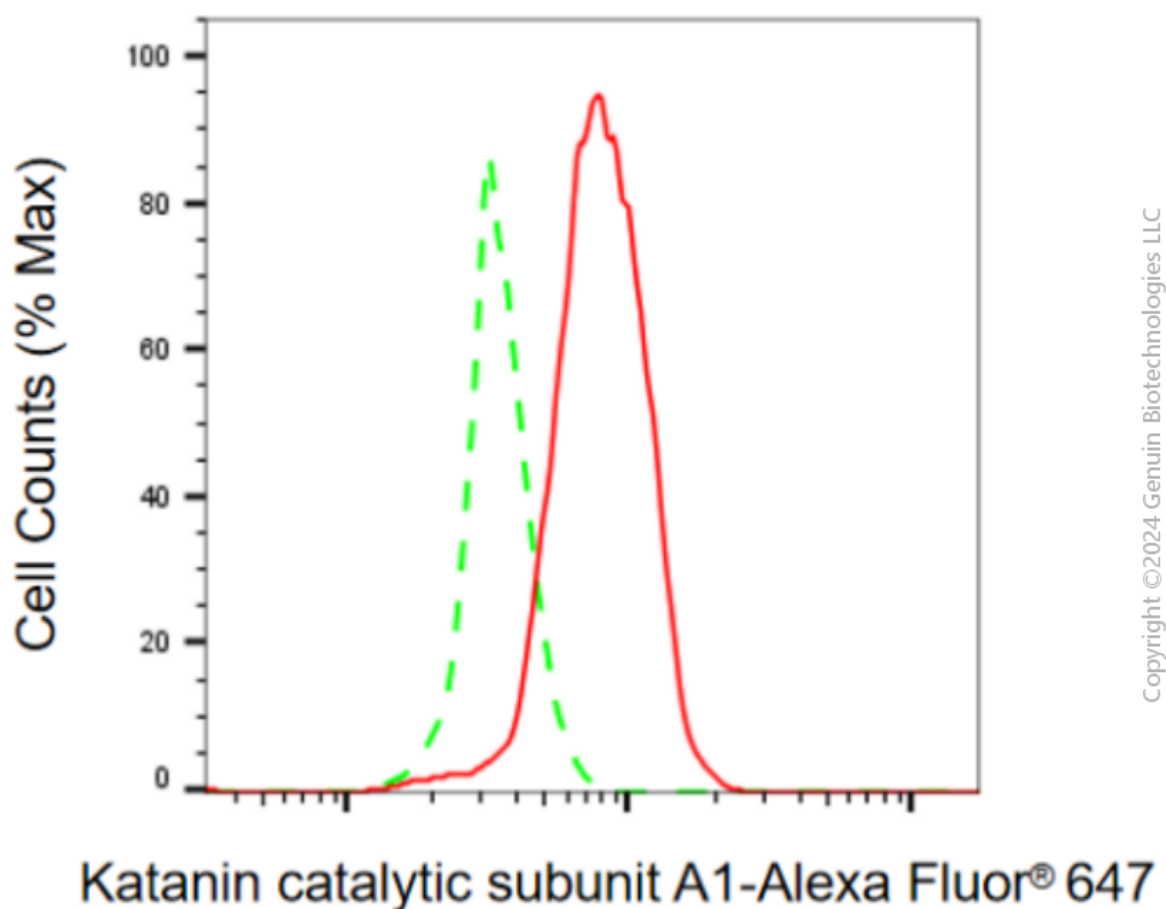
SUPPORT@GENUINBIOTECH.COM
TEL: +1-540-855-7041

ORDERS

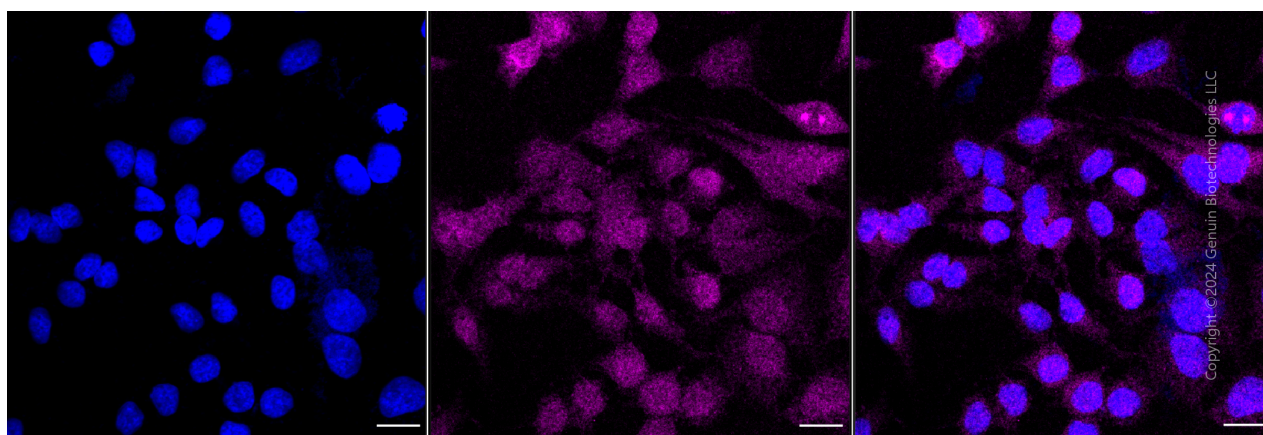
SALES@GENUINBIOTECH.COM
FAX: +1-540-855-7041

WWW.GENUINBIOTECH.COM

Validation Data



Flow cytometric analysis of katanin catalytic subunit A1 expression in HeLa cells using anti-katanin catalytic subunit A1 antibody (Cat#3978, 1:2,000). Green, isotype control; red, katanin catalytic subunit A1.



Immunocytochemical staining of HeLa cells with anti-katanin catalytic subunit A1 antibody (Cat#3978, 1:1,000). Nuclei were stained blue with DAPI; Katanin catalytic subunit A1 was

SUPPORT

SUPPORT@GENUINBIOTECH.COM
TEL: +1-540-855-7041

ORDERS

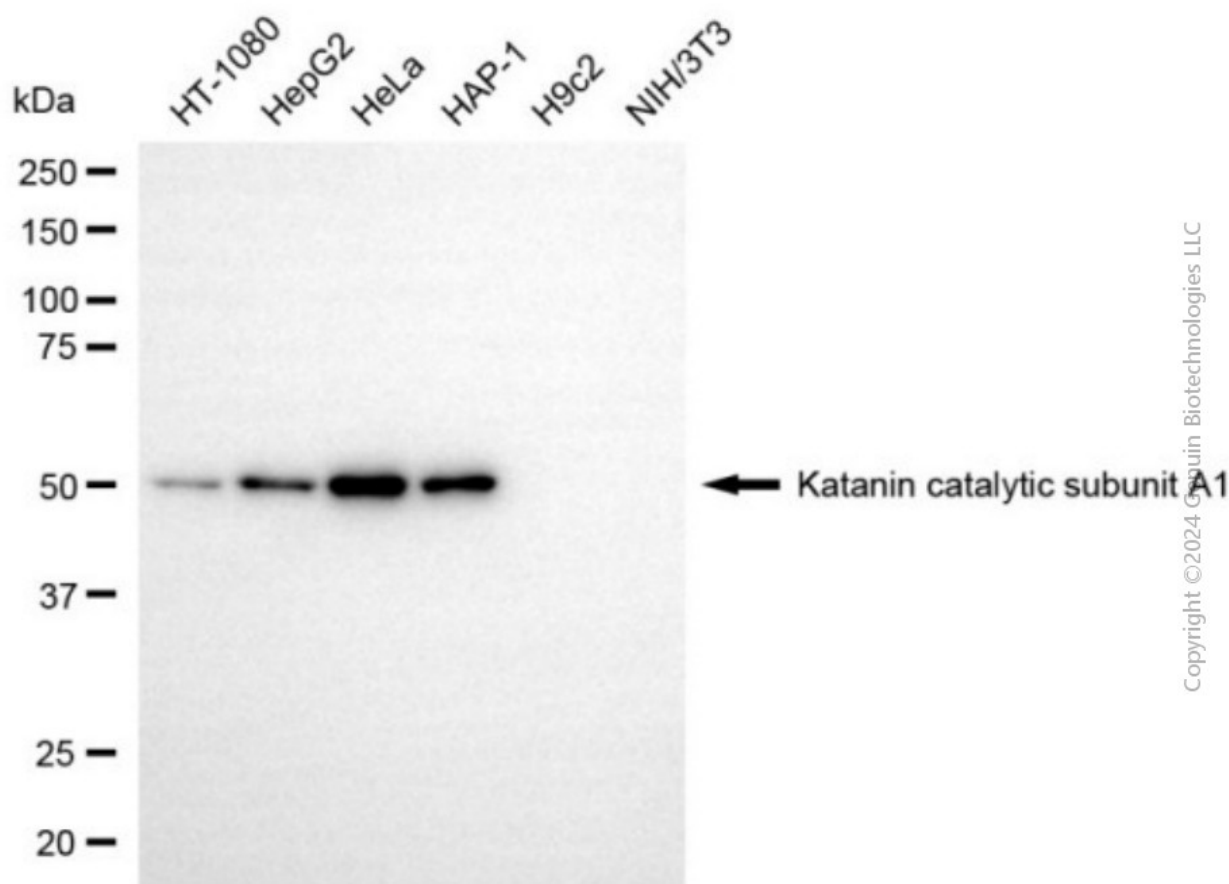
SALES@GENUINBIOTECH.COM
FAX: +1-540-855-7041

WWW.GENUINBIOTECH.COM

Anti-Katanin catalytic subunit A1 Recombinant Rabbit Monoclonal Antibody

PAGE 3

stained magenta with Alexa Fluor® 647. Images were taken using Leica stellaris 5. Protein abundance based on laser Intensity and smart gain: Low. Scale bar, 20 μ m.



Copyright © 2024 Genuin Biotechnologies LLC

Western blotting analysis using anti-katanin catalytic subunit A1 antibody (Cat#3978). Total cell lysates (30 μ g) from various cell lines were loaded and separated by SDS-PAGE. The blot was incubated with anti-katanin catalytic subunit A1 antibody (Cat#3978, 1:5,000) and HRP-conjugated goat anti-rabbit secondary antibody (Cat#201, 1:20,000) respectively. Image was developed using NaQ™ ECL Substrate Kit (Cat#716).

SUPPORT

SUPPORT@GENUINBIOTECH.COM
TEL: +1-540-855-7041

ORDERS

SALES@GENUINBIOTECH.COM
FAX: +1-540-855-7041

WWW.GENUINBIOTECH.COM