

Anti-Exo/Endonuclease G Recombinant Rabbit Monoclonal Antibody



Catalog #: 3983

Aliases

EXOG; Exo/Endonuclease G; ENGL; Endonuclease G-Like 1; ENDOGL1; ENDOGL2; ENGL-A; ENGL-B; Endo/Exonuclease (5'-3'), Endonuclease G-Like; Nuclease EXOG, Mitochondrial; Endonuclease G-Like 2; Endo G-Like 1; EC 3.1.30.-; EC 3.1.30; ENGLA; ENGLB

Background

Gene Name: EXOG

NCBI Gene Entry: [9941](#)

UniProt Entry: [Q9Y2C4](#)

Application Information

Molecular Weight: Predicted, 41 kDa; observed, 41 kDa

Clonality: Rabbit monoclonal antibody

Clone ID: 24GB9005

Species Reactivity: Human

Applications Tested: Western blotting (WB), flow cytometry (FCM)

Immunogen

A synthesized peptide derived from human EXOG

Isotype

Rabbit IgG

Storage Buffer

Supplied in PBS (pH 7.4) containing 50% glycerol, and 0.02% sodium azide.

Storage

Store at -20 °C for one year.

Recommended Dilutions

Western Blotting (WB): 1:1,000-1:5,000

Flow Cytometry (FCM): 1:2,000

Note: This product is for research use only.

Validation Data

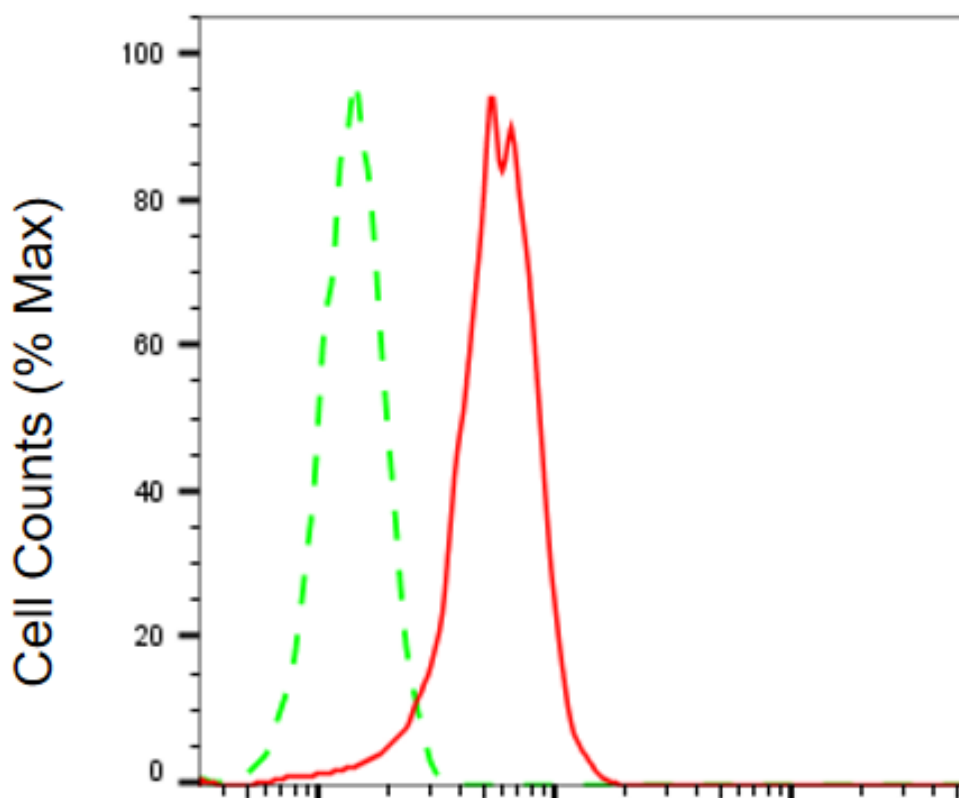
SUPPORT

SUPPORT@GENUINBIOTECH.COM
TEL: +1-540-855-7041

ORDERS

SALES@GENUINBIOTECH.COM
FAX: +1-540-855-7041

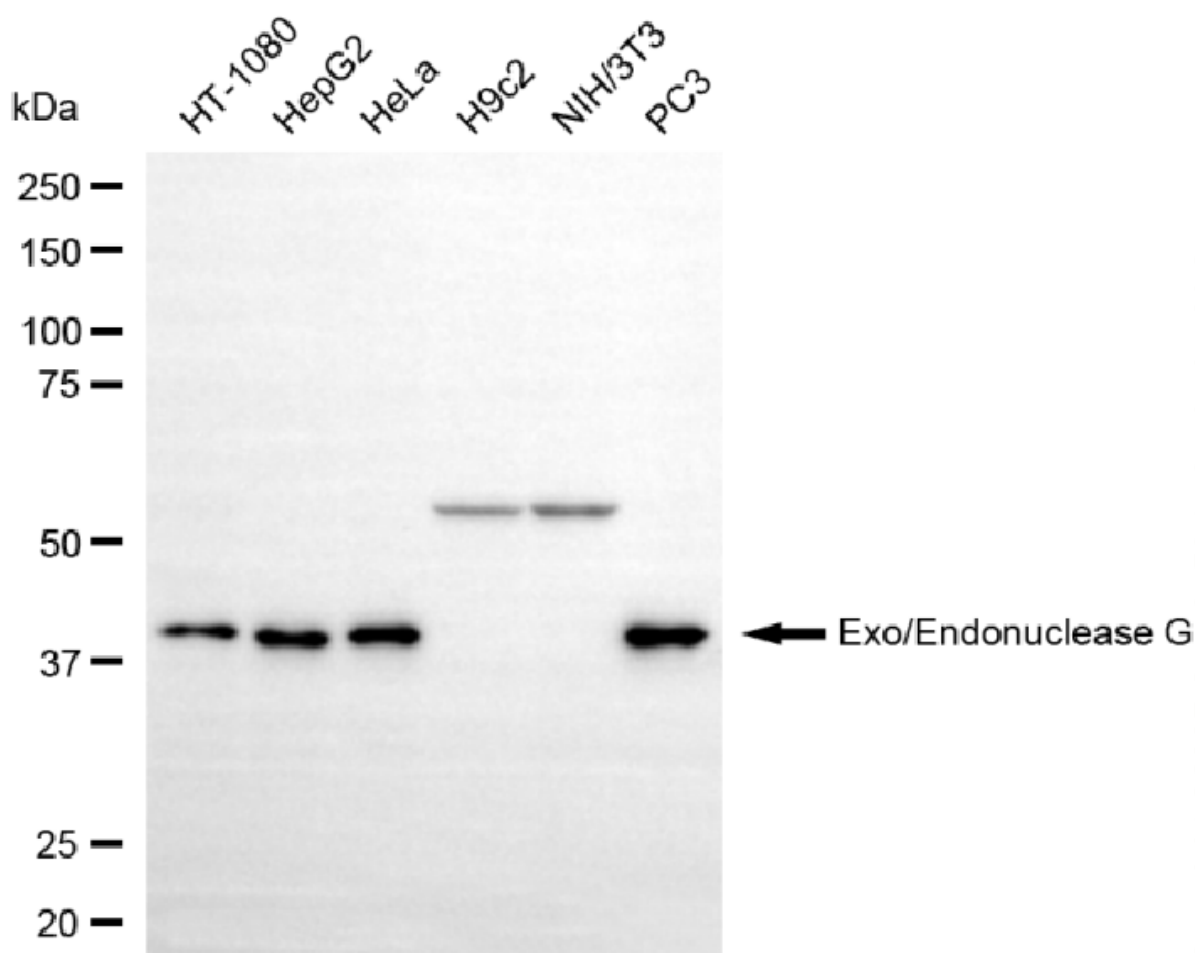
WWW.GENUINBIOTECH.COM



Copyright ©2025 Genuin Biotechnologies LLC

Exo/Endonuclease G-Alexa Fluor® 647

Flow cytometric analysis of Exo/Endonuclease G expression in HepG2 cells using anti-Exo/Endonuclease G antibody (Cat#3983, 1:2,000). Green, isotype control; red, Exo/Endonuclease G.



Western blotting analysis using anti-exo/endonuclease G antibody (Cat#3983). Total cell lysates (30 µg) from various cell lines were loaded and separated by SDS-PAGE. The blot was incubated with anti-exo/endonuclease G antibody (Cat#3983, 1:5,000) and HRP-conjugated goat anti-rabbit secondary antibody (Cat#201, 1:20,000) respectively. Image was developed using NaQ™ ECL Substrate Kit (Cat#716).