

Anti-Stomatin Like 2 Recombinant Rabbit Monoclonal Antibody



Catalog #: 3984

Aliases

STOML2; Stomatin Like 2; SLP-2; HSPC108; Stomatin-Like Protein 2, Mitochondrial; Stomatin (EPB72)-Like 2; EPB72-Like Protein 2; Paraprotein Target 7; EPB72-Like 2; Paratarg-7; SLP2

Background

Gene Name: STOML2

NCBI Gene Entry: [30968](#)

UniProt Entry: [Q9UJZ1](#)

Application Information

Molecular Weight: Predicted, 39 kDa; observed, 39 kDa

Clonality: Rabbit monoclonal antibody

Clone ID: 24GB9010

Species Reactivity: Human, mouse, rat

Applications Tested: Western blotting (WB), flow cytometry (FCM), immunocytochemistry (IC)

Immunogen

A synthesized peptide derived from human Stomatin like 2

Isotype

Rabbit IgG

Storage Buffer

Supplied in PBS (pH 7.4) containing 50% glycerol, and 0.02% sodium azide.

Storage

Store at -20 °C for one year.

Recommended Dilutions

Western Blotting (WB): 1:1,000-1:5,000

Flow Cytometry (FCM): 1:2,000

Immunocytochemistry (IC): 1:100-1:1,000

Note: This product is for research use only.

Validation Data

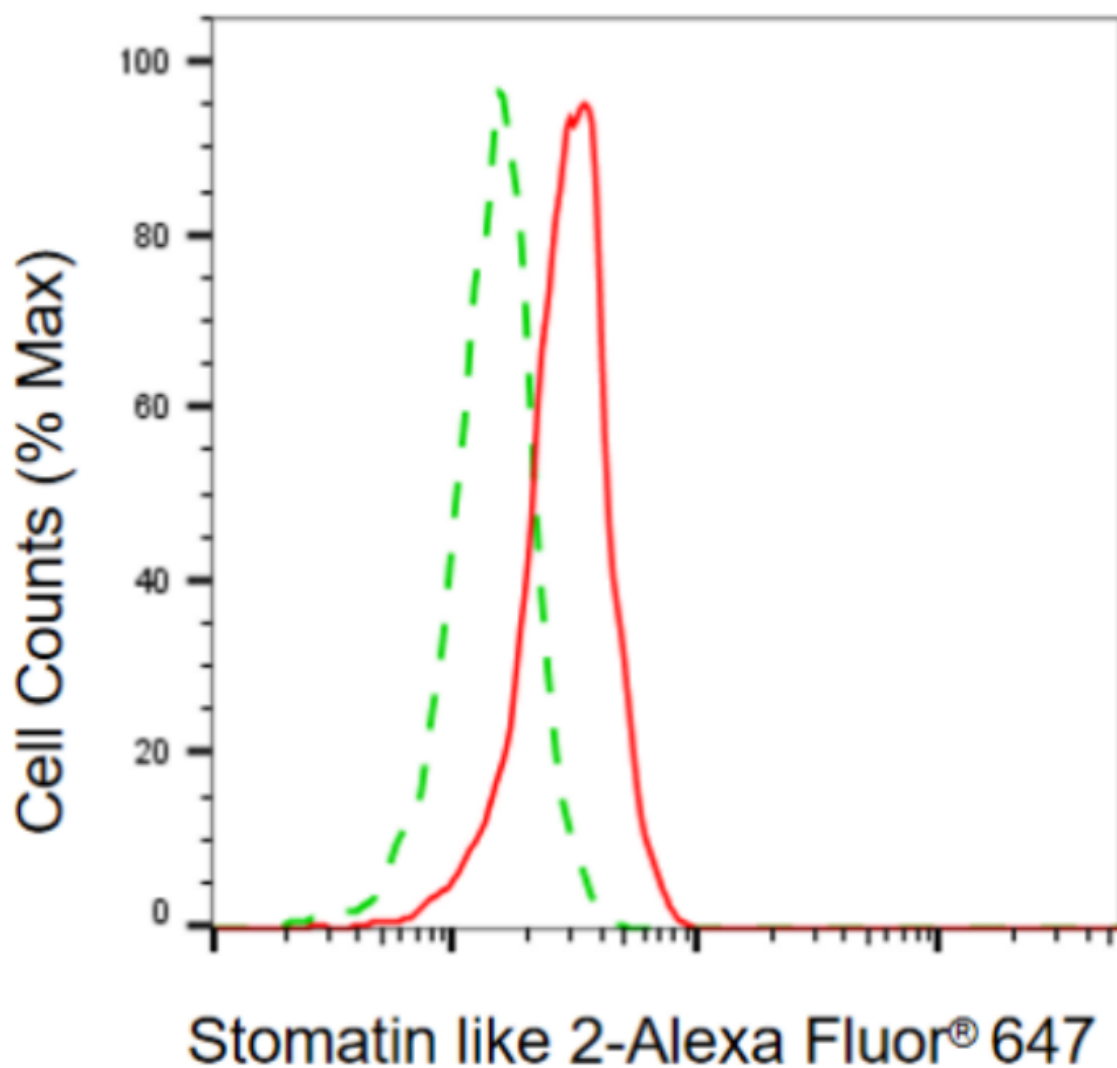
SUPPORT

SUPPORT@GENUINBIOTECH.COM
TEL: +1-540-855-7041

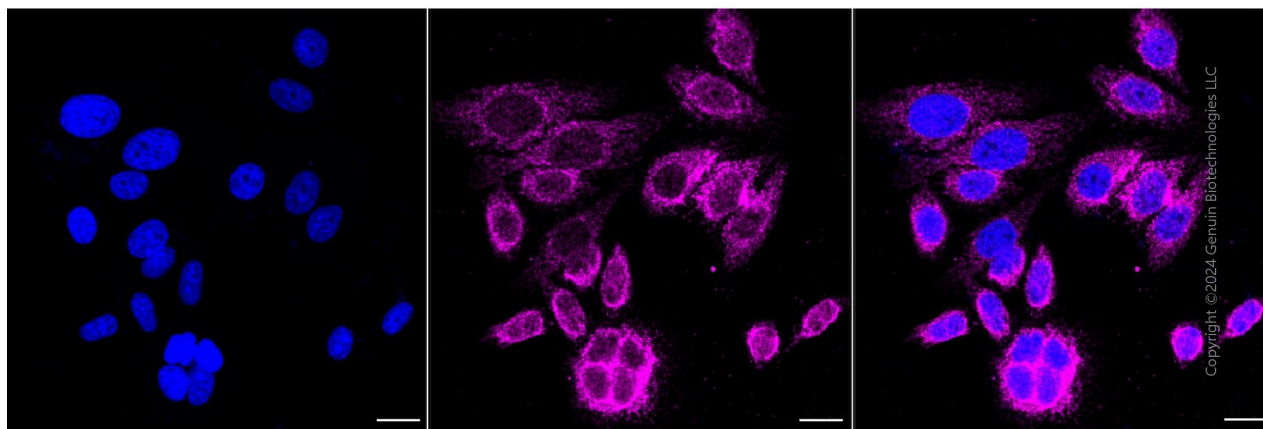
ORDERS

SALES@GENUINBIOTECH.COM
FAX: +1-540-855-7041

WWW.GENUINBIOTECH.COM



Flow cytometric analysis of stomatin like 2 expression in HepG2 cells using anti-stomatin like 2 antibody (Cat#3984, 1:2,000). Green, isotype control; red, stomatin like 2.

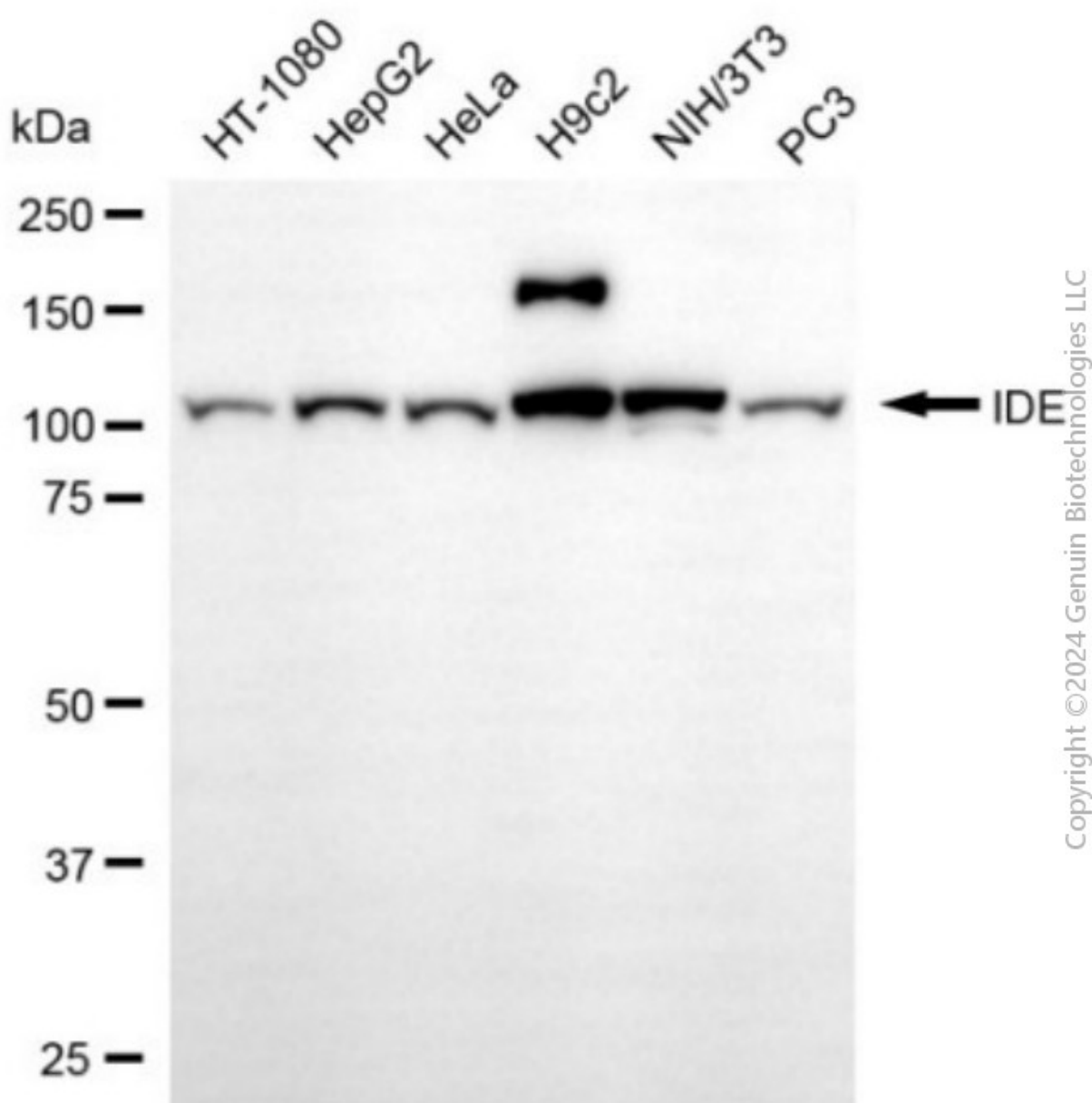


Immunocytochemical staining of HepG2 cells with anti-Stomatin like 2 antibody (Cat#3984,

Anti-Stomatin Like 2 Recombinant Rabbit Monoclonal Antibody

PAGE 3

1:1,000). Nuclei were stained blue with DAPI; Stomatin like 2 was stained magenta with Alexa Fluor® 647. Images were taken using Leica stellaris 5. Protein abundance based on laser Intensity and smart gain: Medium. Scale bar, 20 μ m.



Western blotting analysis using anti-stomatin like 2 antibody (Cat#3984). Total cell lysates (30 μ g) from various cell lines were loaded and separated by SDS-PAGE. The blot was incubated with anti-stomatin like 2 antibody (Cat#3984, 1:5,000) and HRP-conjugated goat anti-rabbit secondary antibody (Cat#201, 1:20,000) respectively. Image was developed using NaQ™ ECL Substrate Kit (Cat#716).

SUPPORT

SUPPORT@GENUINBIOTECH.COM
TEL: +1-540-855-7041

ORDERS

SALES@GENUINBIOTECH.COM
FAX: +1-540-855-7041

WWW.GENUINBIOTECH.COM