

Anti-UBE2L3 Recombinant Rabbit Monoclonal Antibody



Catalog #: 3988

Aliases

UBE2L3; Ubiquitin Conjugating Enzyme E2 L3; UBCH7; Ubiquitin-Conjugating Enzyme E2 L3; E2 Ubiquitin-Conjugating Enzyme L3; Ubiquitin-Conjugating Enzyme E2-F1; Ubiquitin Carrier Protein L3; Ubiquitin-Protein Ligase L3; L-UBC; Ubiquitin-Conjugating Enzyme E2L 3; Ubiquitin Conjugating Enzyme E2L 3; Ubiquitin-Conjugating Enzyme UBCH7; EC 2.3.2.23; EC 6.3.2.19; E2-F1; UbcM4; UBCE7; UbcH7

Background

Gene Name: UBE2L3

NCBI Gene Entry: [7332](#)

UniProt Entry: [P68036](#)

Application Information

Molecular Weight: Predicted, 18 kDa; observed, 17 kDa

Clonality: Rabbit monoclonal antibody

Clone ID: 24GB9030

Species Reactivity: Human, mouse, rat

Applications Tested: Western blotting (WB), flow cytometry (FCM), immunocytochemistry (IC)

Immunogen

A synthesized peptide derived from human UBE2L3

Isotype

Rabbit IgG

Storage Buffer

Supplied in PBS (pH 7.4) containing 50% glycerol, and 0.02% sodium azide.

Storage

Store at -20 °C for one year.

Recommended Dilutions

Western Blotting (WB): 1:1,000-1:5,000

Flow Cytometry (FCM): 1:2,000

Immunocytochemistry (IC): 1:100-1:1,000

SUPPORT

SUPPORT@GENUINBIOTECH.COM
TEL: +1-540-855-7041

ORDERS

SALES@GENUINBIOTECH.COM
FAX: +1-540-855-7041

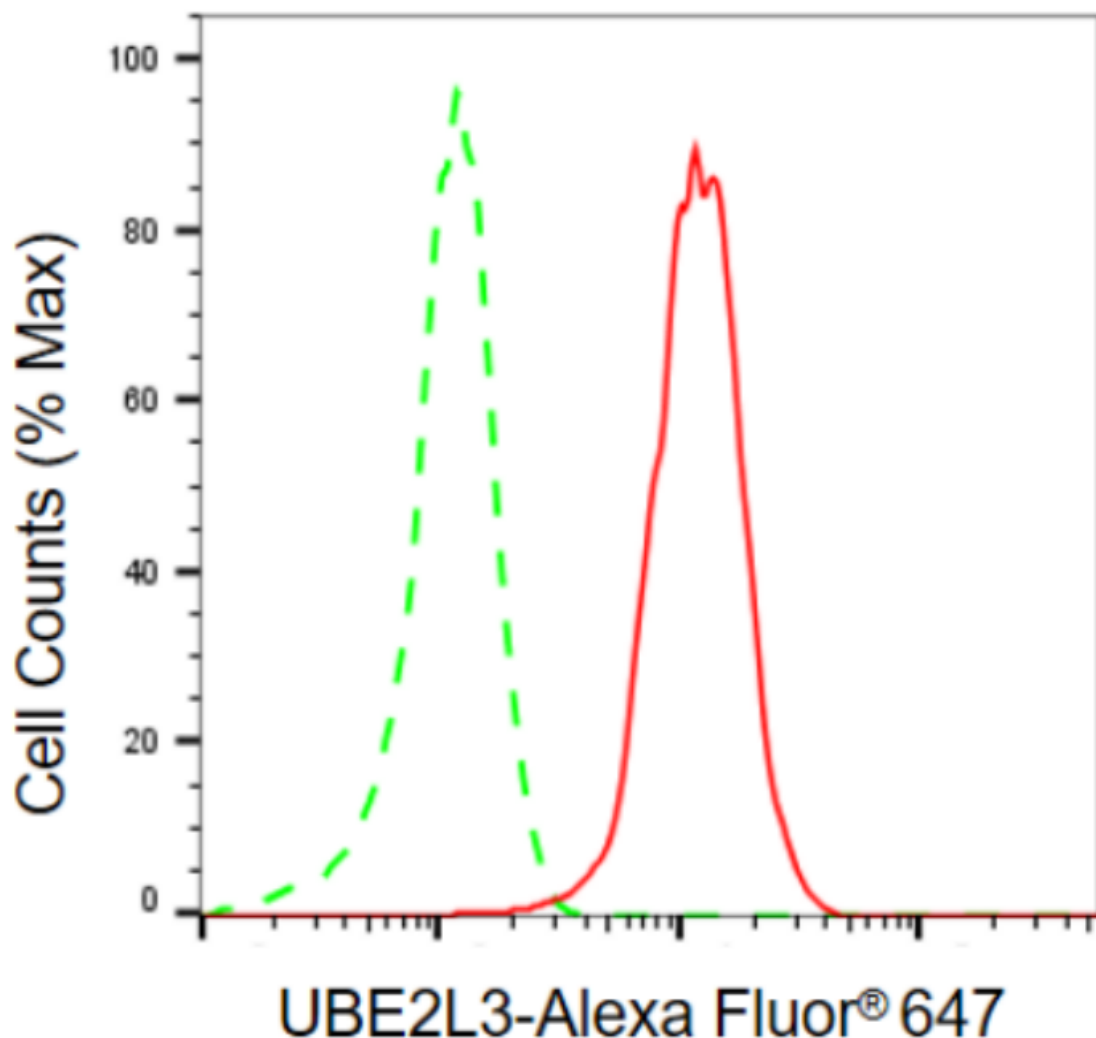
WWW.GENUINBIOTECH.COM

Anti-UBE2L3 Recombinant Rabbit Monoclonal Antibody

PAGE 2

Note: This product is for research use only.

Validation Data



Copyright ©2024 Genuin Biotechnologies LLC

Flow cytometric analysis of UBE2L3 expression in HepG2 cells using anti-UBE2L3 antibody (Cat#3988, 1:2,000). Green, isotype control; red, UBE2L3.

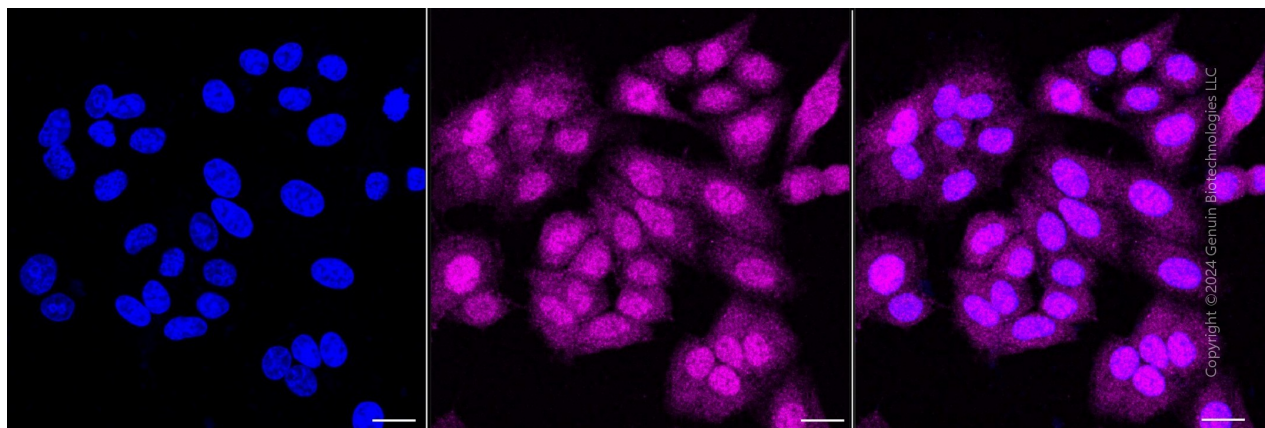
SUPPORT

SUPPORT@GENUINBIOTECH.COM
TEL: +1-540-855-7041

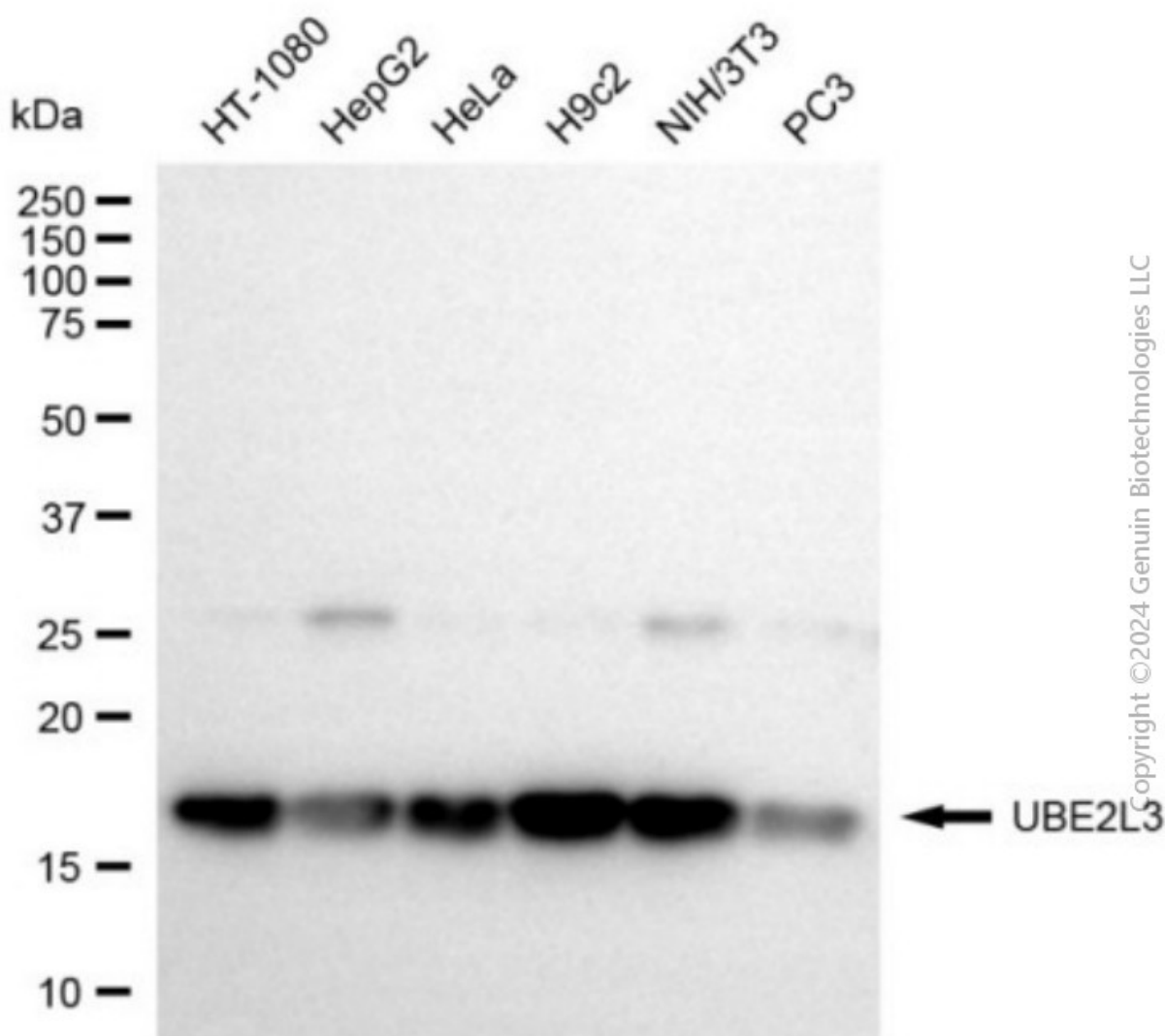
ORDERS

SALES@GENUINBIOTECH.COM
FAX: +1-540-855-7041

WWW.GENUINBIOTECH.COM



Immunocytochemical staining of HepG2 cells with anti-UBE2L3 antibody (Cat#3988, 1:1,000) . Nuclei were stained blue with DAPI; UBE2L3 was stained magenta with Alexa Fluor® 647. Images were taken using Leica stellaris 5. Protein abundance based on laser Intensity and smart gain: Medium. Scale bar, 20 μ m.



Copyright ©2024 Genuin Biotechnologies LLC

Western blotting analysis using anti-UBE2L3 antibody (Cat#3988). Total cell lysates (30 µg) from various cell lines were loaded and separated by SDS-PAGE. The blot was incubated with anti-UBE2L3 antibody (Cat#3988, 1:5,000) and HRP-conjugated goat anti-rabbit secondary antibody (Cat#201, 1:20,000) respectively. Image was developed using NaQ™ ECL Substrate Kit (Cat#716).