

# Anti-Importin 9 Recombinant Rabbit Monoclonal Antibody



**Catalog #: 3991**

## Aliases

IPO9; Importin 9; Imp9; Ran-Binding Protein 9; Importin-9; FLJ10402; RanBP9; IMP9; KIAA1192; RANBP9

## Background

Gene Name: IPO9

NCBI Gene Entry: [55705](#)

UniProt Entry: [Q96P70](#)

## Application Information

Molecular Weight: Predicted, 116 kDa; observed, 140 kDa

Clonality: Rabbit monoclonal antibody

Clone ID: 24GB9045

Species Reactivity: Human, mouse, rat

Applications Tested: Western blotting (WB), flow cytometry (FCM), immunocytochemistry (IC)

## Immunogen

A synthesized peptide derived from human Importin 9 / RANBP9

## Isotype

Rabbit IgG

## Storage Buffer

Supplied in PBS (pH 7.4) containing 50% glycerol, and 0.02% sodium azide.

## Storage

Store at -20 °C for one year.

## Recommended Dilutions

Western Blotting (WB): 1:1,000-1:5,000

Flow Cytometry (FCM): 1:2,000

Immunocytochemistry (IC): 1:100-1:1,000

**Note:** This product is for research use only.

## Validation Data

---

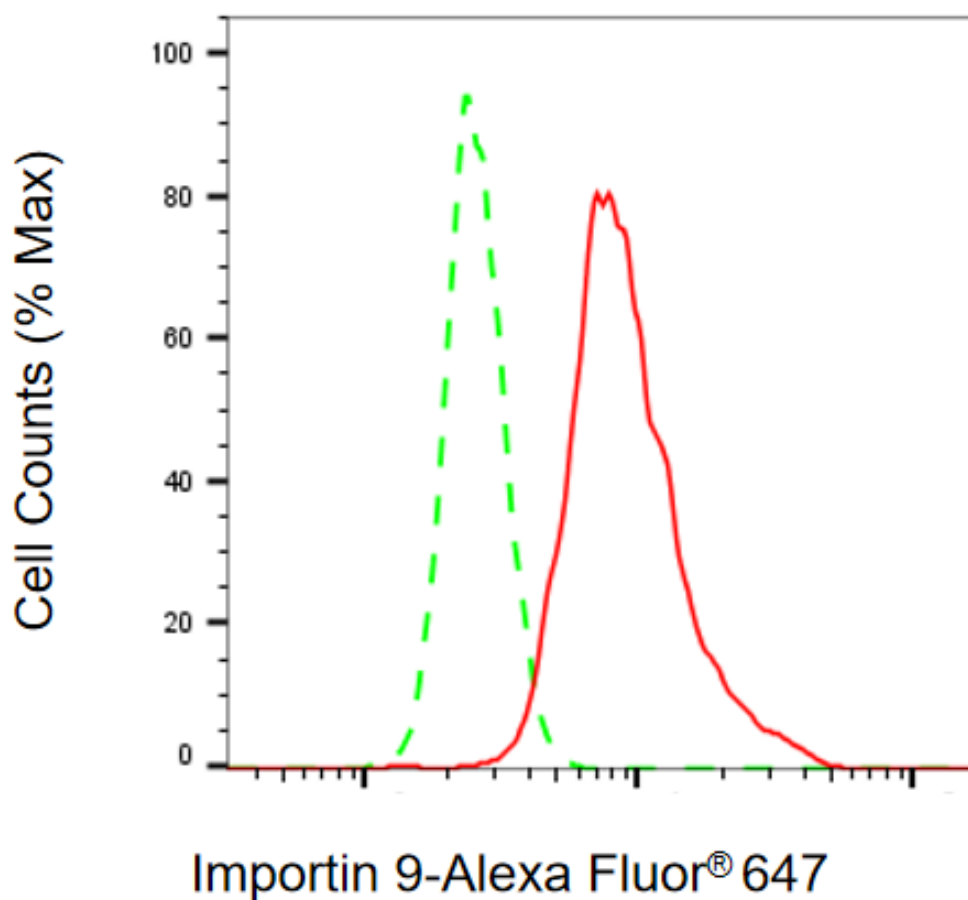
### SUPPORT

SUPPORT@GENUINBIOTECH.COM  
TEL: +1-540-855-7041

### ORDERS

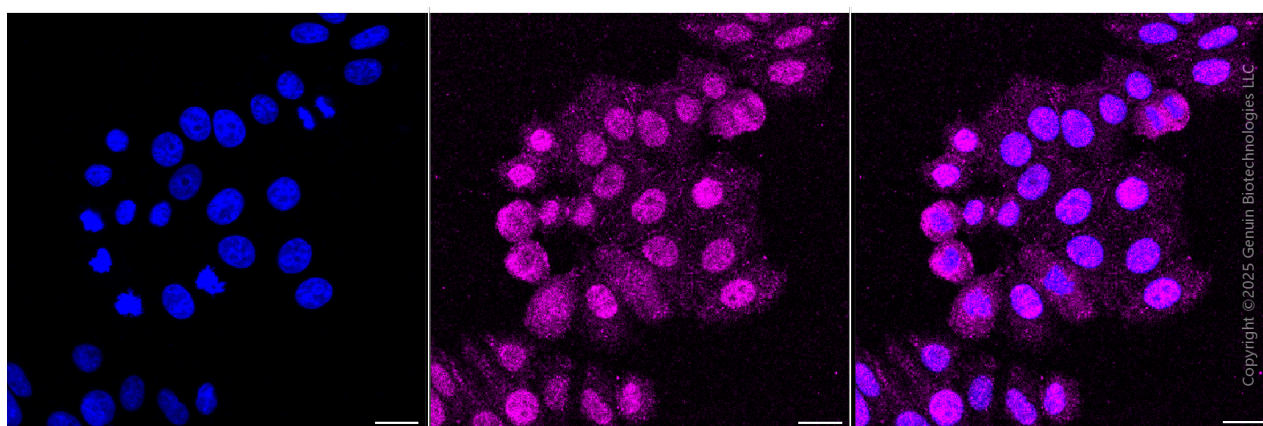
SALES@GENUINBIOTECH.COM  
FAX: +1-540-855-7041

[WWW.GENUINBIOTECH.COM](http://WWW.GENUINBIOTECH.COM)



Copyright ©2025 Genuin Biotechnologies LLC

Flow cytometric analysis of Importin 9 expression in HepG2 cells using anti-Importin 9 antibody (Cat#3991, 1:2,000). Green, isotype control; red, Importin 9.



Immunocytochemical staining of HepG2 cells with anti-Importin 9 antibody (Cat#3991, 1:1,000) . Nuclei were stained blue with anti-DAPI; Importin 9 was stained magenta with Alexa Fluor® 647. Images were taken using Leica stellaris 5. Protein abundance based on laser Intensity and smart

**SUPPORT**

SUPPORT@GENUINBIOTECH.COM  
TEL: +1-540-855-7041

**ORDERS**

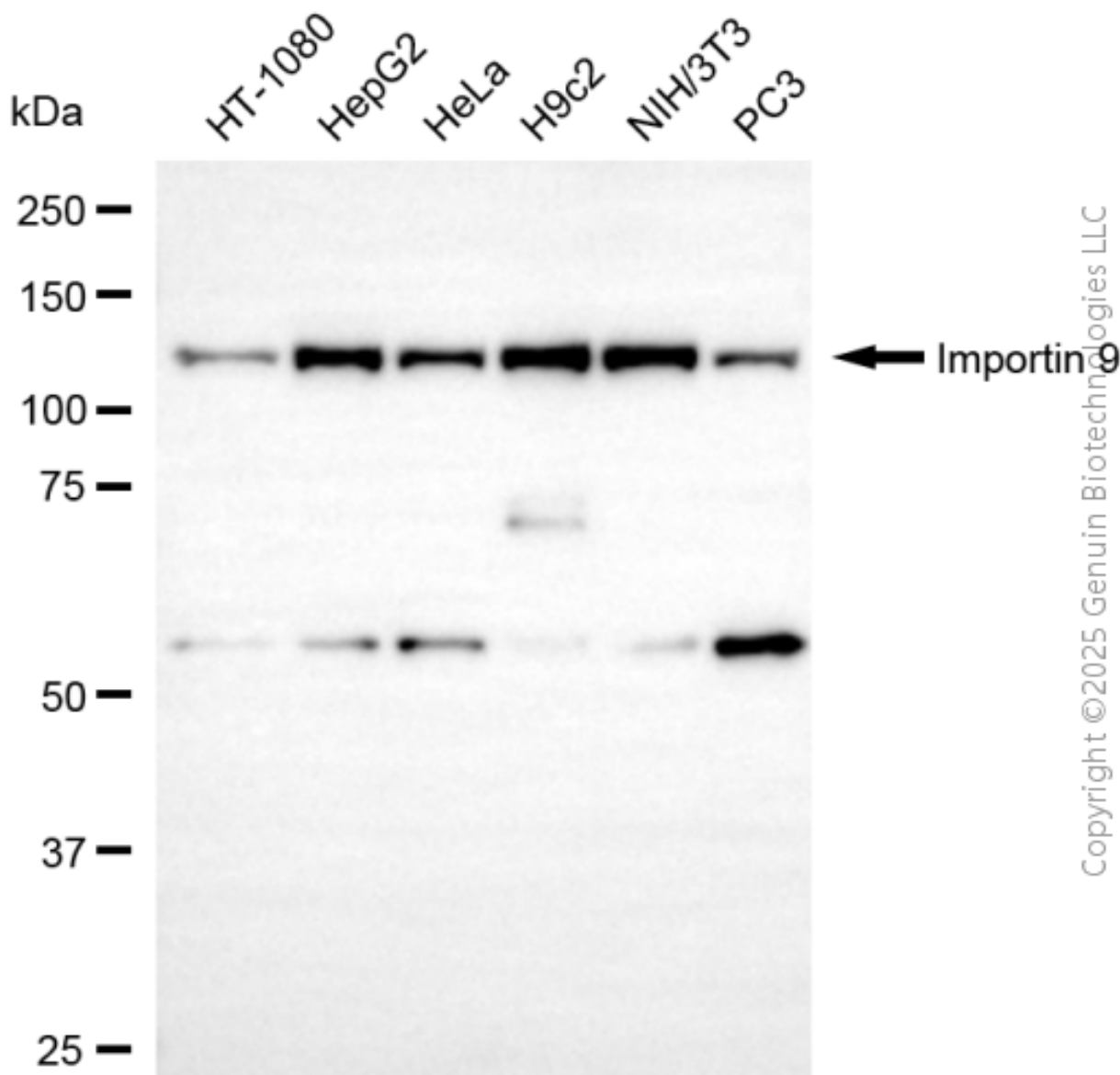
SALES@GENUINBIOTECH.COM  
FAX: +1-540-855-7041

**WWW.GENUINBIOTECH.COM**

## Anti-Importin 9 Recombinant Rabbit Monoclonal Antibody

PAGE 3

gain: Medium. Scale bar, 20  $\mu$ m.



Copyright ©2025 Genuin Biotechnologies LLC

Western blotting analysis using anti-importin 9 antibody (Cat#3991). Total cell lysates (30  $\mu$ g) from various cell lines were loaded and separated by SDS-PAGE. The blot was incubated with anti-importin 9 antibody (Cat#3991, 1:5,000) and HRP-conjugated goat anti-rabbit secondary antibody (Cat#201, 1:20,000) respectively. Image was developed using FeQ™ ECL Substrate Kit (Cat#226).

### SUPPORT

SUPPORT@GENUINBIOTECH.COM  
TEL: +1-540-855-7041

### ORDERS

SALES@GENUINBIOTECH.COM  
FAX: +1-540-855-7041

[WWW.GENUINBIOTECH.COM](http://WWW.GENUINBIOTECH.COM)