

# Anti-Methylthioadenosine phosphorylase Recombinant Rabbit Monoclonal Antibody



**Catalog #: 3993**

## Aliases

MTAP; Methylthioadenosine Phosphorylase; MSAP; S-Methyl-5'-Thioadenosine Phosphorylase; 5'-Methylthioadenosine Phosphorylase; MTA Phosphorylase; MTAPase; C86fus; Epididymis Secretory Sperm Binding Protein; Epididymis Luminal Protein 249; MeSAdo Phosphorylase; EC 2.4.2.28; HEL-249; DMSMFH; C86FUS; DMSFH; LGMBF; BDMF

## Background

Gene Name: MTAP

NCBI Gene Entry: [4507](#)

UniProt Entry: [Q13126](#)

## Application Information

Molecular Weight: Predicted, 31 kDa; observed, 29 kDa

Clonality: Rabbit monoclonal antibody

Clone ID: 24GB9055

Species Reactivity: Mouse, rat

Applications Tested: Western blotting (WB), flow cytometry (FCM), immunocytochemistry (IC)

## Immunogen

A synthesized peptide derived from human MTAP

## Isotype

Rabbit IgG

## Storage Buffer

Supplied in PBS (pH 7.4) containing 50% glycerol, and 0.02% sodium azide.

## Storage

Store at -20 °C for one year.

## Recommended Dilutions

Western Blotting (WB): 1:1,000-1:5,000

Flow Cytometry (FCM): 1:2,000

Immunocytochemistry (IC): 1:100-1:1,000

---

### SUPPORT

SUPPORT@GENUINBIOTECH.COM  
TEL: +1-540-855-7041

### ORDERS

SALES@GENUINBIOTECH.COM  
FAX: +1-540-855-7041

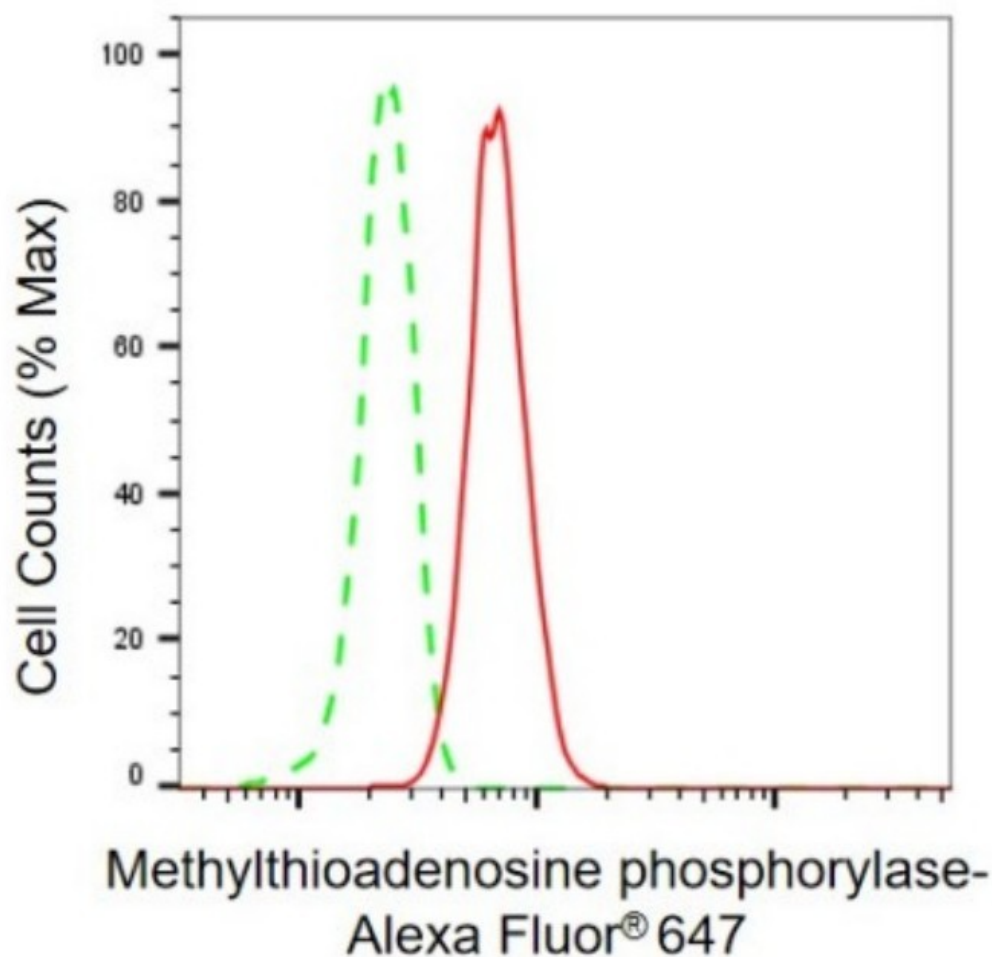
[WWW.GENUINBIOTECH.COM](http://WWW.GENUINBIOTECH.COM)

# Anti-Methylthioadenosine phosphorylase Recombinant Rabbit Monoclonal Antibody

PAGE 2

**Note:** This product is for research use only.

## Validation Data



Copyright ©2024 Genuin Biotechnologies LLC

Flow cytometric analysis of methylthioadenosine phosphorylase expression in HT-1080 cells using anti-methylthioadenosine phosphorylase antibody (Cat#3993, 1:2,000). Green, isotype control; red, methylthioadenosine phosphorylase.

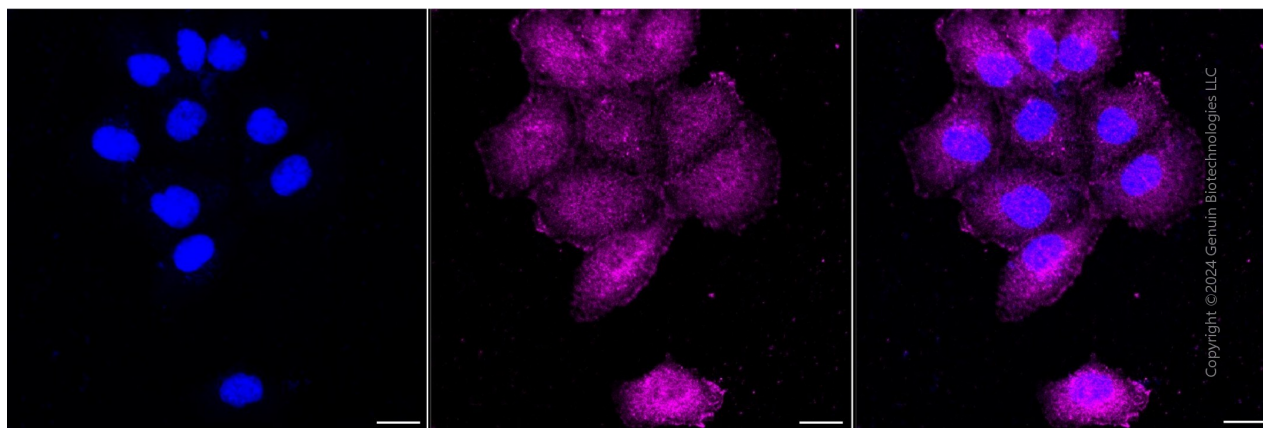
### SUPPORT

SUPPORT@GENUINBIOTECH.COM  
TEL: +1-540-855-7041

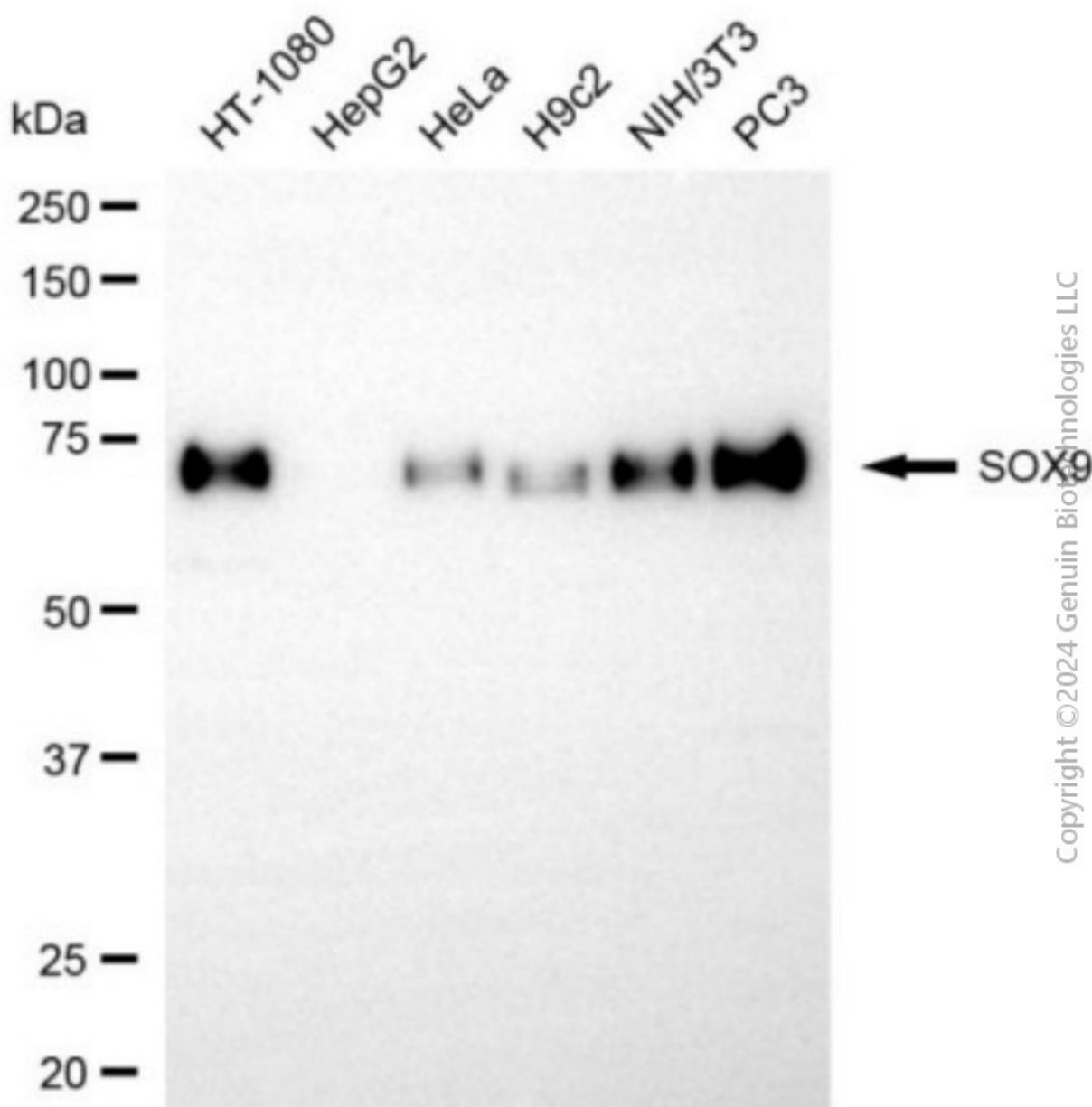
### ORDERS

SALES@GENUINBIOTECH.COM  
FAX: +1-540-855-7041

[WWW.GENUINBIOTECH.COM](http://WWW.GENUINBIOTECH.COM)



Immunocytochemical staining of HT-1080 cells with anti-Methylthioadenosine phosphorylase antibody (Cat#3993, 1:1,000). Nuclei were stained blue with DAPI; Methylthioadenosine phosphorylase was stained magenta with Alexa Fluor® 647. Images were taken using Leica stellaris 5. Protein abundance based on laser Intensity and smart gain: Medium. Scale bar, 20  $\mu$ m.



Western blotting analysis using anti-methylthioadenosine phosphorylase antibody (Cat#3993). Total cell lysates (30 µg) from various cell lines were loaded and separated by SDS-PAGE. The blot was incubated with anti-methylthioadenosine phosphorylase antibody (Cat#3993, 1:5,000) and HRP-conjugated goat anti-rabbit secondary antibody (Cat#201, 1:20,000) respectively. Image was developed using NaQ™ ECL Substrate Kit (Cat#716).