

# Anti-CLIP1 Recombinant Rabbit Monoclonal Antibody



**Catalog #: 3995**

## Aliases

CLP1; Cleavage Factor Polyribonucleotide Kinase Subunit 1; HEAB; Cleavage And Polyadenylation Factor I Subunit 1; Polyribonucleotide 5'-Hydroxyl-Kinase Clp1; Pre-mRNA Cleavage Complex II Protein Clp1; Polyadenylation Factor Clp1; Polynucleotide Kinase Clp1; EC 2.7.1.78; HClp1; CLP1, Cleavage And Polyadenylation Factor I Subunit, Homolog (S. Cerevisiae); Polyribonucleotide 5'-Hydroxyl-Kinase; Homolog Of Yeast CFIA Subunit Clp1p; ATP/GTP-Binding Protein; ATP/GTPbinding Protein; HCLP1

## Background

Gene Name: CLIP1

NCBI Gene Entry: [6249](#)

UniProt Entry: [P30622](#)

## Application Information

Molecular Weight: Predicted, 162 kDa; observed, 170 kDa

Clonality: Rabbit monoclonal antibody

Clone ID: 24GB9065

Species Reactivity: Human, rat

Applications Tested: Western blotting (WB), flow cytometry (FCM), immunocytochemistry (IC)

## Immunogen

A synthesized peptide derived from CLIP170

## Isotype

Rabbit IgG

## Storage Buffer

Supplied in PBS (pH 7.4) containing 50% glycerol, and 0.02% sodium azide.

## Storage

Store at -20 °C for one year.

## Recommended Dilutions

Western Blotting (WB): 1:1,000-1:5,000

Flow Cytometry (FCM): 1:2,000

Immunocytochemistry (IC): 1:100-1:1,000

---

### SUPPORT

SUPPORT@GENUINBIOTECH.COM  
TEL: +1-540-855-7041

### ORDERS

SALES@GENUINBIOTECH.COM  
FAX: +1-540-855-7041

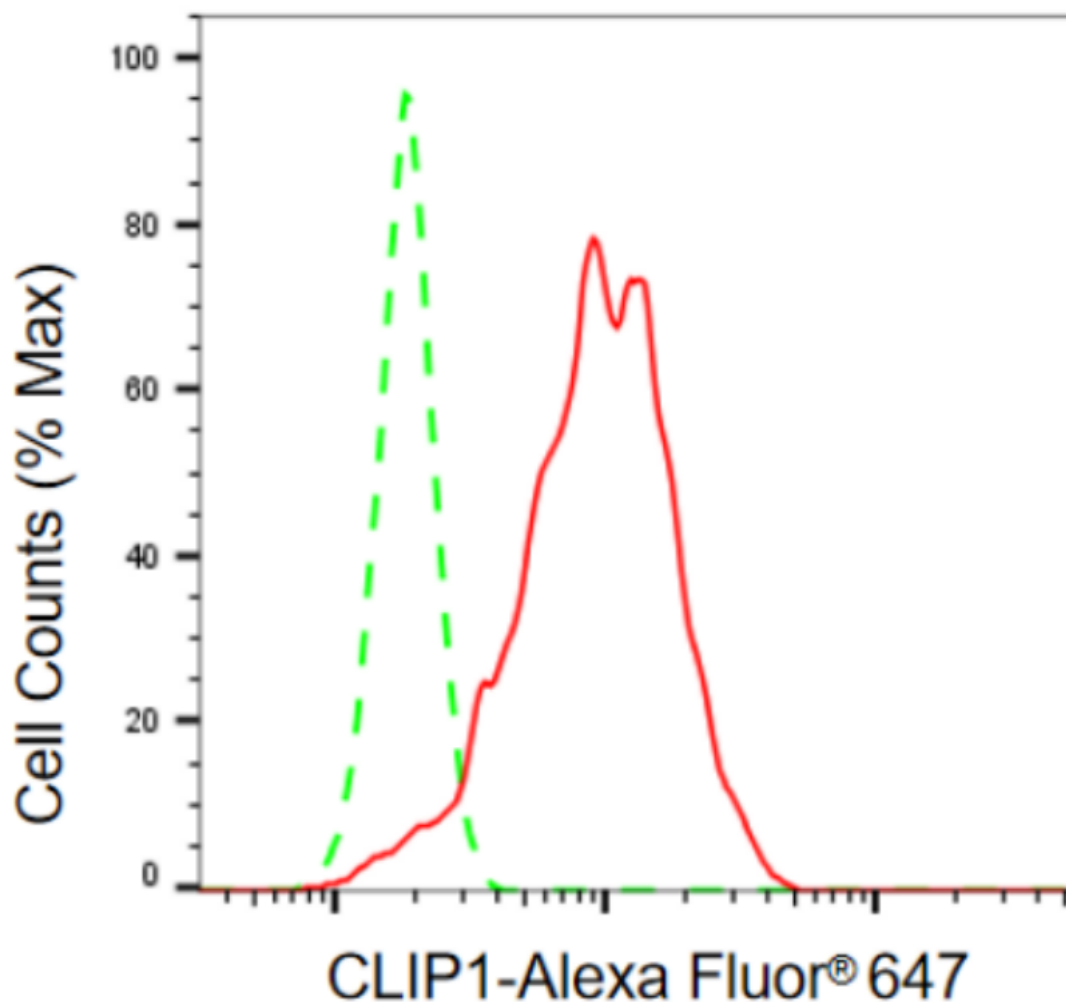
[WWW.GENUINBIOTECH.COM](http://WWW.GENUINBIOTECH.COM)

# Anti-CLIP1 Recombinant Rabbit Monoclonal Antibody

PAGE 2

**Note:** This product is for research use only.

## Validation Data



Copyright ©2024 Genuin Biotechnologies LLC

Flow cytometric analysis of CLIP1 expression in HepG2 cells using anti-CLIP1 antibody (Cat#3995, 1:2,000). Green, isotype control; red, CLIP1.

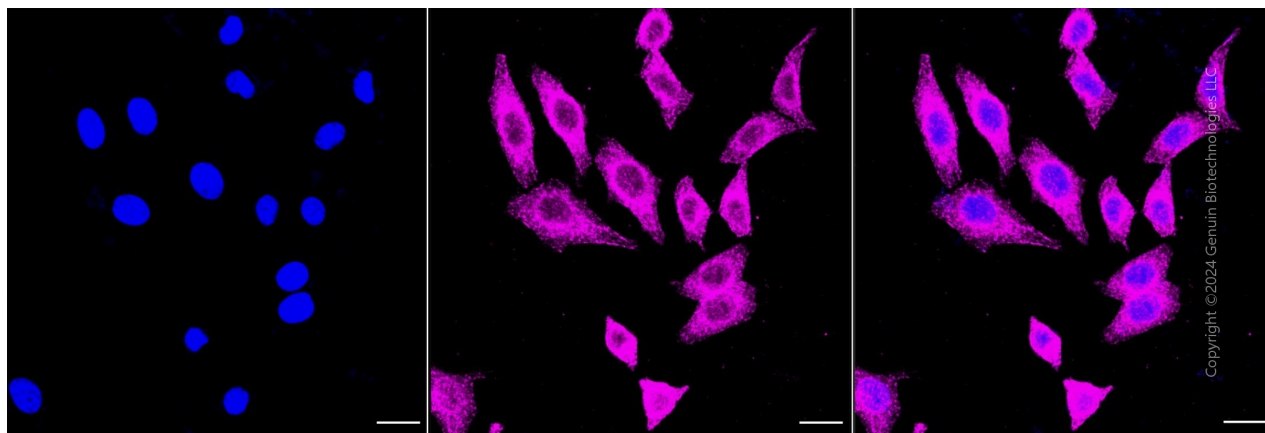
### SUPPORT

SUPPORT@GENUINBIOTECH.COM  
TEL: +1-540-855-7041

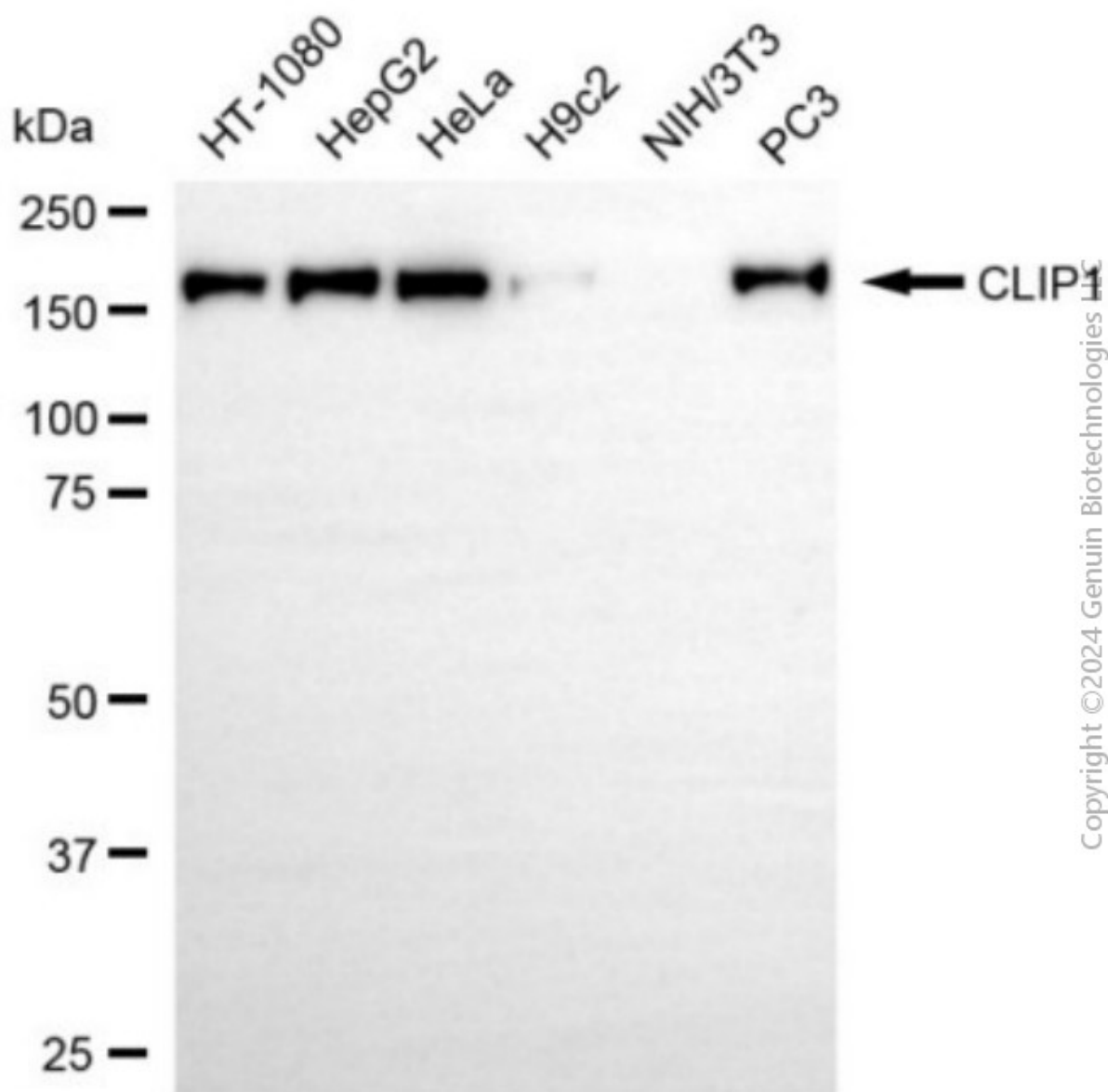
### ORDERS

SALES@GENUINBIOTECH.COM  
FAX: +1-540-855-7041

[WWW.GENUINBIOTECH.COM](http://WWW.GENUINBIOTECH.COM)



Immunocytochemical staining of HepG2 cells with anti-CLIP1 antibody (Cat#3995, 1:1,000) . Nuclei were stained blue with DAPI; CLIP1 was stained magenta with Alexa Fluor® 647. Images were taken using Leica stellaris 5. Protein abundance based on laser Intensity and smart gain: Medium. Scale bar, 20  $\mu$ m.



Western blotting analysis using anti-CLIP1 antibody (Cat#3995). Total cell lysates (30 µg) from various cell lines were loaded and separated by SDS-PAGE. The blot was incubated with anti-CLIP1 antibody (Cat#3995, 1:5,000) and HRP-conjugated goat anti-rabbit secondary antibody (Cat#201, 1:20,000) respectively. Image was developed using NaQ™ ECL Substrate Kit (Cat#716).