

Anti-A-kinase anchoring protein 8 Recombinant Rabbit Monoclonal Antibody



Catalog #: 3996

Aliases

AKAP8; A-Kinase Anchoring Protein 8; AKAP95; A Kinase (PRKA) Anchor Protein 8; A-Kinase Anchor Protein, 95kDa; A-Kinase Anchor Protein 8; AKAP 95; AKAP-8; A-Kinase Anchor Protein 95 KDa; DKFZp586B1222; DKFZP586B1222; AKAP-95

Background

Gene Name: AKAP8

NCBI Gene Entry: [10270](#)

UniProt Entry: [O43823](#)

Application Information

Molecular Weight: Predicted, 76 kDa; observed, 95 kDa

Clonality: Rabbit monoclonal antibody

Clone ID: 24GB9070

Species Reactivity: Human, mouse, rat

Applications Tested: Western blotting (WB), flow cytometry (FCM), immunocytochemistry (IC)

Immunogen

A synthesized peptide derived from AKAP 95

Isotype

Rabbit IgG

Storage Buffer

Supplied in PBS (pH 7.4) containing 50% glycerol, and 0.02% sodium azide.

Storage

Store at -20 °C for one year.

Recommended Dilutions

Western Blotting (WB): 1:1,000-1:5,000

Flow Cytometry (FCM): 1:2,000

Immunocytochemistry (IC): 1:100-1:1,000

Note: This product is for research use only.

SUPPORT

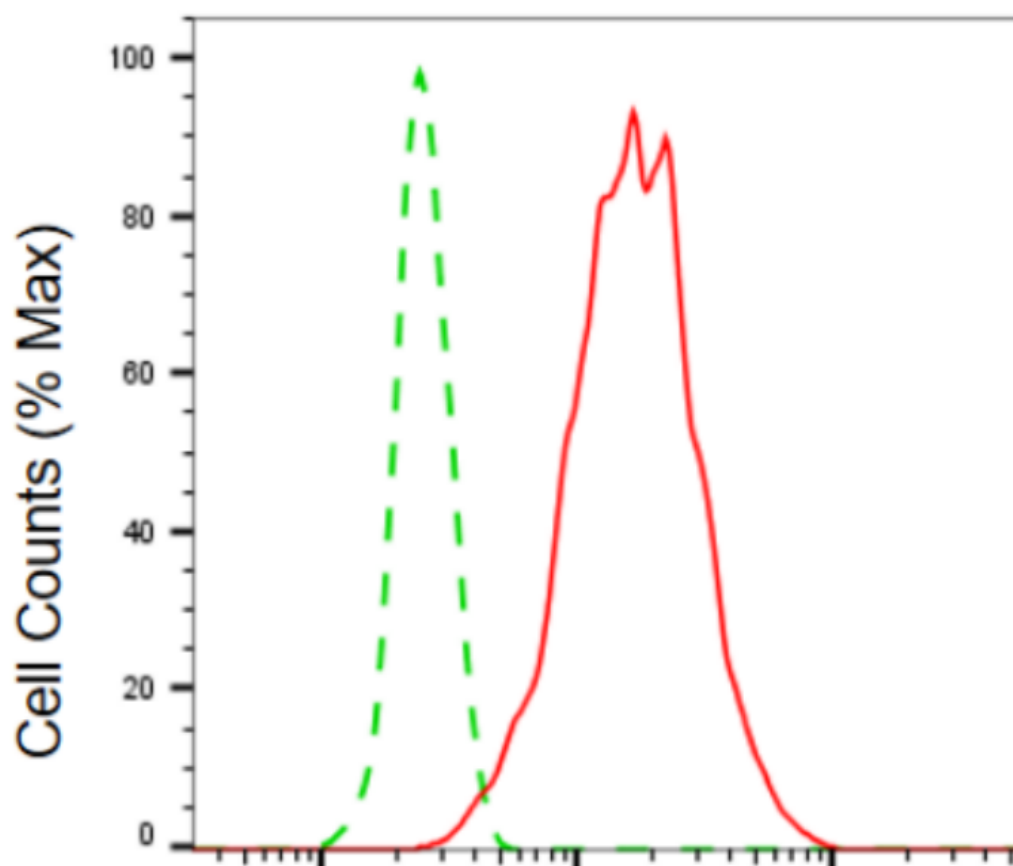
SUPPORT@GENUINBIOTECH.COM
TEL: +1-540-855-7041

ORDERS

SALES@GENUINBIOTECH.COM
FAX: +1-540-855-7041

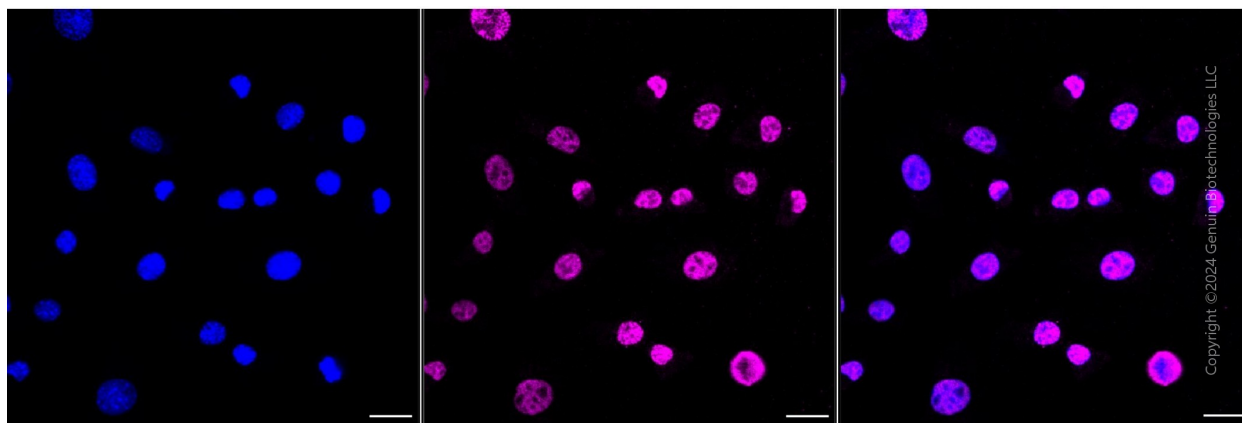
WWW.GENUINBIOTECH.COM

Validation Data



A-kinase anchoring protein 8-Alexa Fluor® 647

Flow cytometric analysis of A-kinase anchoring protein 8 expression in C2C12 cells using anti-A-kinase anchoring protein 8 antibody (Cat#3996, 1:2,000). Green, isotype control; red, A-kinase anchoring protein 8.



Immunocytochemical staining of C2C12 cells A-kinase anchoring protein 8 antibody (Cat#3996,

SUPPORT

SUPPORT@GENUINBIOTECH.COM
TEL: +1-540-855-7041

ORDERS

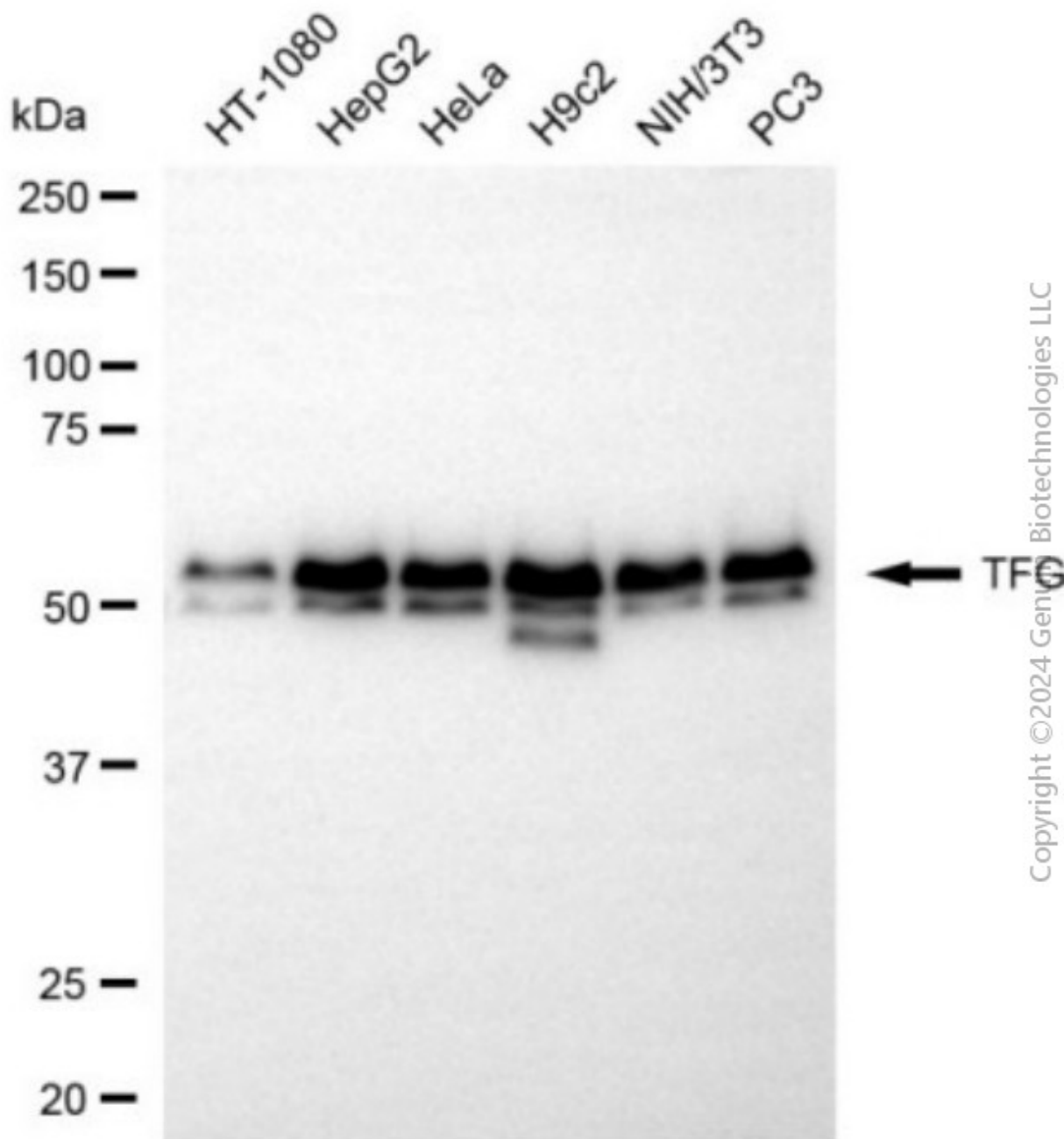
SALES@GENUINBIOTECH.COM
FAX: +1-540-855-7041

WWW.GENUINBIOTECH.COM

Anti-A-kinase anchoring protein 8 Recombinant Rabbit Monoclonal Antibody

PAGE 3

1:1,000). Nuclei were stained blue with DAPI; A-kinase anchoring protein 8 was stained magenta with Alexa Fluor® 647. Images were taken using Leica stellaris 5. Protein abundance based on laser Intensity and smart gain: High. Scale bar, 20 μ m.



Western blotting analysis using anti-A-kinase anchoring protein 8 antibody (Cat#3996). Total cell lysates (20 μ g) from various cell lines were loaded and separated by SDS-PAGE. The blot was incubated with anti-A-kinase anchoring protein 8 antibody (Cat#3996, 1:5,000) and HRP-conjugated goat anti-rabbit secondary antibody (Cat#201, 1:20,000) respectively. Image was developed using NaQ™ ECL Substrate Kit (Cat#716).

SUPPORT

SUPPORT@GENUINBIOTECH.COM
TEL: +1-540-855-7041

ORDERS

SALES@GENUINBIOTECH.COM
FAX: +1-540-855-7041

WWW.GENUINBIOTECH.COM