

# Anti-CTP synthase 1 Recombinant Rabbit Monoclonal Antibody



**Catalog #: 3997**

## Aliases

CTPS1; CTP Synthase 1; GATD5A; CTPS; UTP--Ammonia Ligase 1; CTP Synthetase 1; EC 6.3.4.2; Cytidine 5-Prime Triphosphate Synthetase; Cytidine 5'-Triphosphate Synthetase; CTP Synthase; GATD5; IMD24

## Background

Gene Name: CTPS1

NCBI Gene Entry: [1503](#)

UniProt Entry: [P17812](#)

## Application Information

Molecular Weight: Predicted, 67 kDa; observed, 72 kDa

Clonality: Rabbit monoclonal antibody

Clone ID: 24GB9075

Species Reactivity: Human, mouse, rat

Applications Tested: Western blotting (WB), flow cytometry (FCM)

## Immunogen

A synthesized peptide derived from human CTP synthase / CTPS

## Isotype

Rabbit IgG

## Storage Buffer

Supplied in PBS (pH 7.4) containing 50% glycerol, and 0.02% sodium azide.

## Storage

Store at -20 °C for one year.

## Recommended Dilutions

Western Blotting (WB): 1:1,000-1:5,000

Flow Cytometry (FCM): 1:2,000

**Note:** This product is for research use only.

## Validation Data

---

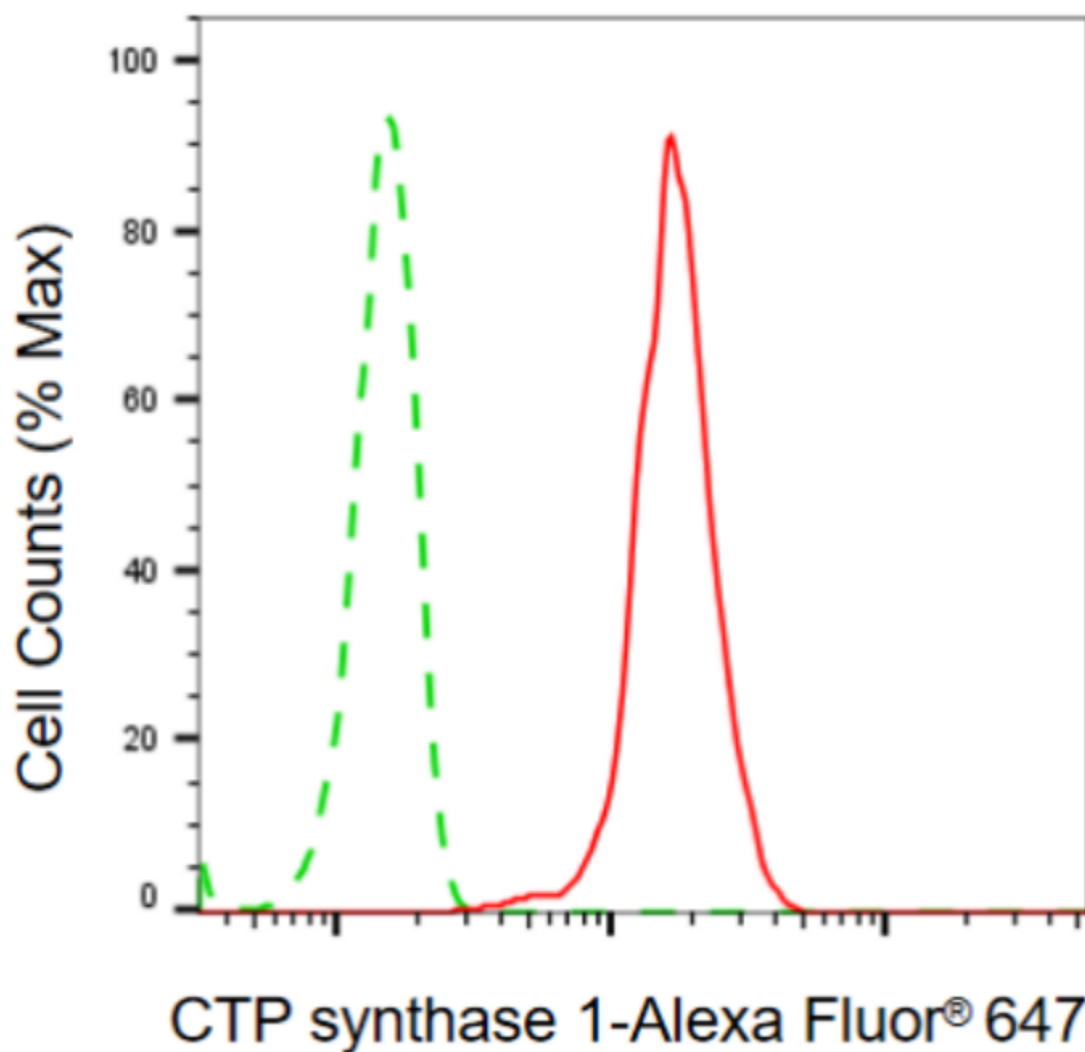
### SUPPORT

SUPPORT@GENUINBIOTECH.COM  
TEL: +1-540-855-7041

### ORDERS

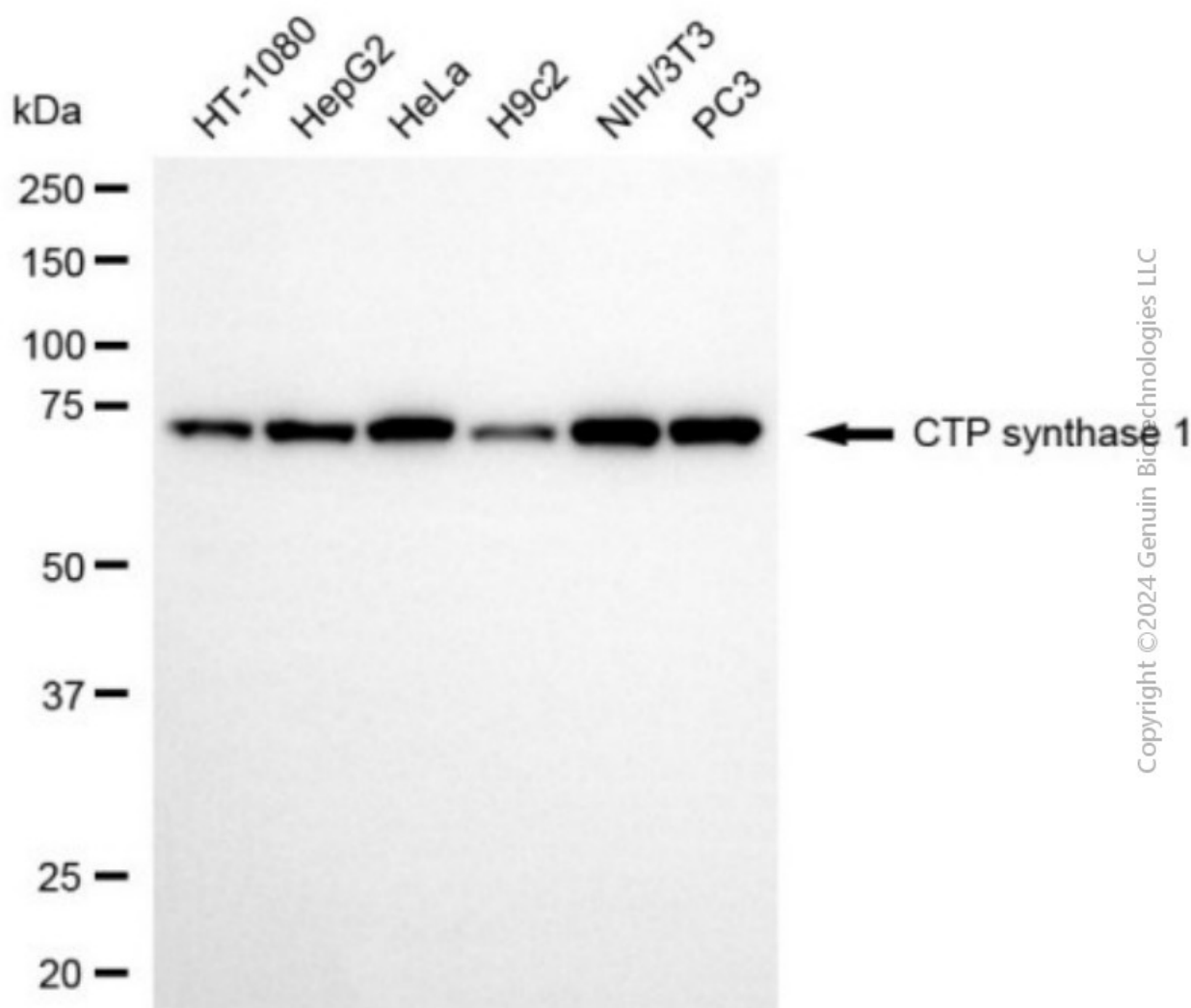
SALES@GENUINBIOTECH.COM  
FAX: +1-540-855-7041

[WWW.GENUINBIOTECH.COM](http://WWW.GENUINBIOTECH.COM)



Copyright ©2024 Genuin Biotechnologies LLC

Flow cytometric analysis of CTP synthase 1 expression in HT-1080 cells using anti-CTP synthase 1 antibody (Cat#3997, 1:2,000). Green, isotype control; red, CTP synthase 1.



Western blotting analysis using anti-CTP synthase 1 antibody (Cat#3997). Total cell lysates (30  $\mu$ g) from various cell lines were loaded and separated by SDS-PAGE. The blot was incubated with anti-CTP synthase 1 antibody (Cat#3997, 1:5,000) and HRP-conjugated goat anti-rabbit secondary antibody (Cat#201, 1:20,000) respectively. Image was developed using NaQ™ ECL Substrate Kit (Cat#716).