

Anti-Oxoglutarate receptor 1 Recombinant Rabbit Monoclonal Antibody



Catalog #: 4001

Aliases

OXGR1; Oxoglutarate Receptor 1; P2RY15; P2Y15; Alpha-Ketoglutarate Receptor 1; 2-Oxoglutarate Receptor 1; GPR80; GPR99; AKGR; Oxoglutarate (Alpha-Ketoglutarate) Receptor 1; G Protein-Coupled Receptor 80; G-Protein Coupled Receptor 99; P2Y-Like Nucleotide Receptor; P2Y Purinoceptor 15; P2Y-Like GPCR; Seven Transmembrane Helix Receptor; G-Protein Coupled Receptor 80; CAON2

Background

Gene Name: OXGR1

NCBI Gene Entry: [27199](#)

UniProt Entry: [Q96P68](#)

Application Information

Molecular Weight: Predicted, 38 kDa; observed, 36 kDa

Clonality: Rabbit monoclonal antibody

Clone ID: 24GB9095

Species Reactivity: Human, mouse, rat

Applications Tested: Western blotting (WB), immunocytochemistry (IC)

Immunogen

A synthesized peptide derived from human OXGR1 / GPR99

Isotype

Rabbit IgG

Storage Buffer

Supplied in PBS (pH 7.4) containing 50% glycerol, and 0.02% sodium azide.

Storage

Store at -20 °C for one year.

Recommended Dilutions

Western Blotting (WB): 1:1,000-1:5,000

Immunocytochemistry (IC): 1:100-1:1,000

SUPPORT

SUPPORT@GENUINBIOTECH.COM
TEL: +1-540-855-7041

ORDERS

SALES@GENUINBIOTECH.COM
FAX: +1-540-855-7041

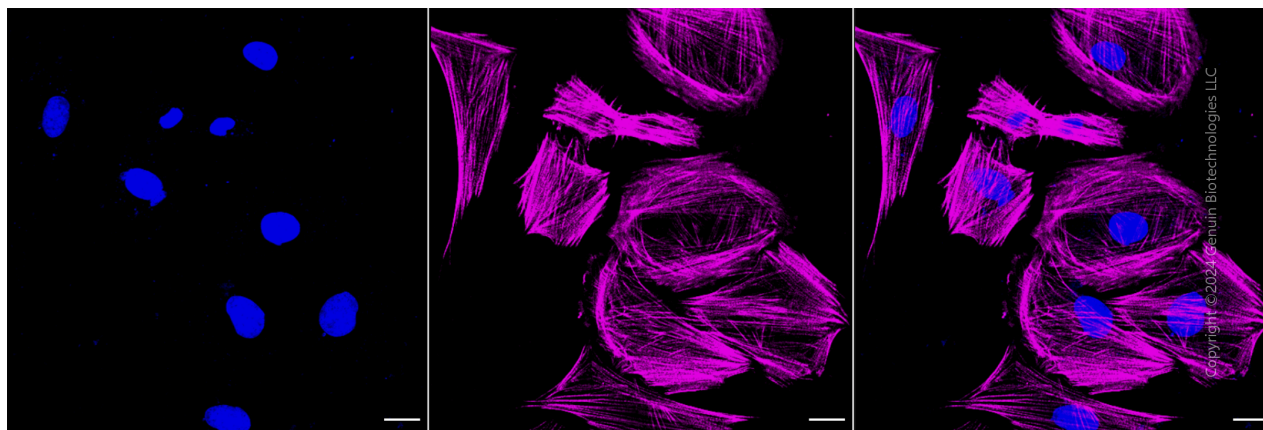
WWW.GENUINBIOTECH.COM

Anti-Oxoglutarate receptor 1 Recombinant Rabbit Monoclonal Antibody

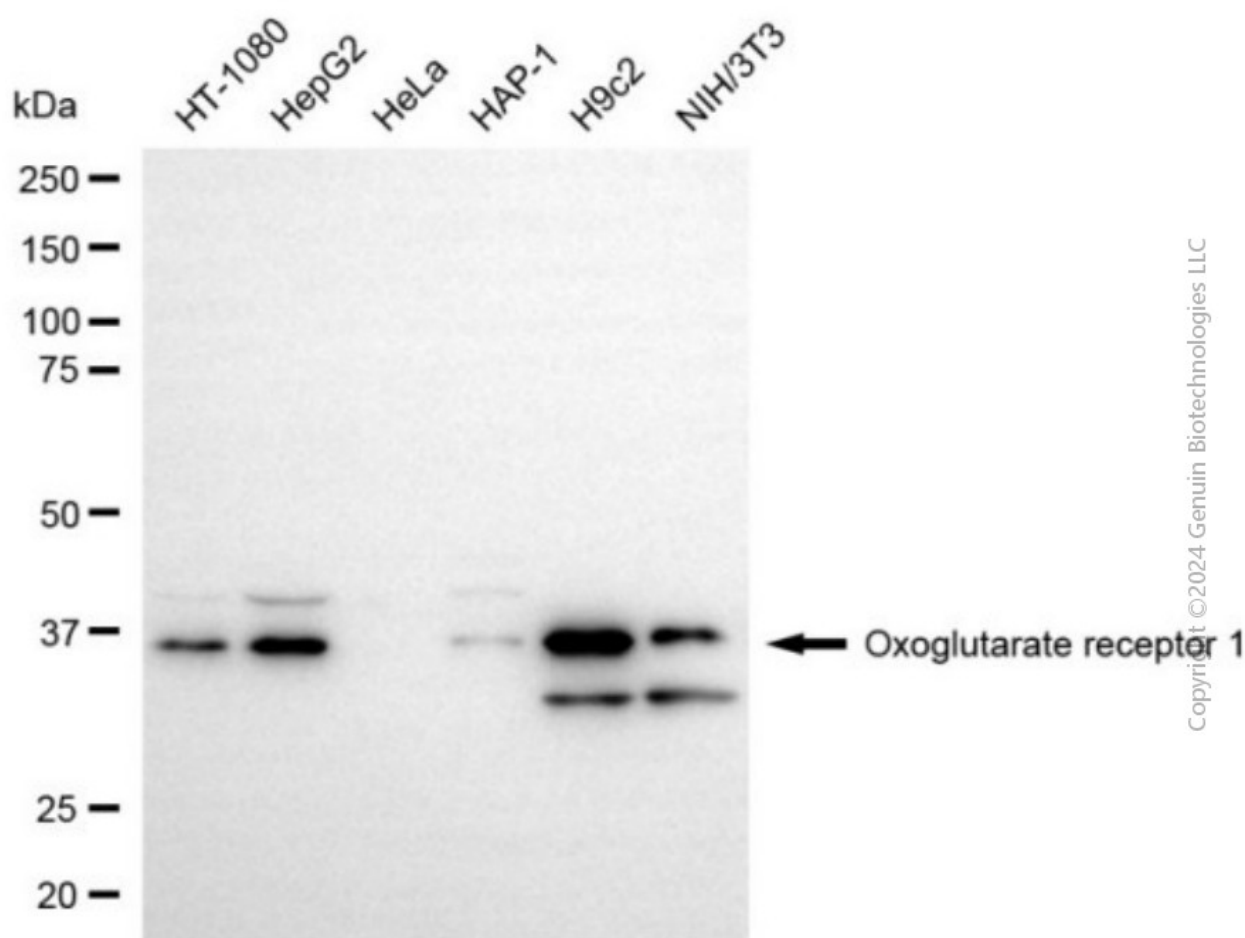
PAGE 2

Note: This product is for research use only.

Validation Data



Immunocytochemical staining of H9C2 cells with anti-oxoglutarate receptor 1 antibody (Cat#4001, 1:1,000). Nuclei were stained blue with DAPI; Oxoglutarate receptor 1 was stained magenta with Alexa Fluor® 647. Images were taken using Leica stellaris 5. Protein abundance based on laser Intensity and smart gain: High. Scale bar, 20 μ m.



SUPPORT

SUPPORT@GENUINBIOTECH.COM
TEL: +1-540-855-7041

ORDERS

SALES@GENUINBIOTECH.COM
FAX: +1-540-855-7041

WWW.GENUINBIOTECH.COM

Anti-Oxoglutarate receptor 1 Recombinant Rabbit Monoclonal Antibody

PAGE 3

Western blotting analysis using anti-oxoglutarate receptor 1 antibody (Cat#4001). Total cell lysates (30 µg) from various cell lines were loaded and separated by SDS-PAGE. The blot was incubated with anti-oxoglutarate receptor 1 antibody (Cat#4001, 1:5,000) and HRP-conjugated goat anti-rabbit secondary antibody (Cat#201, 1:20,000) respectively. Image was developed using NaQ™ ECL Substrate Kit (Cat#716).

SUPPORT

SUPPORT@GENUINBIOTECH.COM
TEL: +1-540-855-7041

ORDERS

SALES@GENUINBIOTECH.COM
FAX: +1-540-855-7041

WWW.GENUINBIOTECH.COM