

# Anti-Cytoplasmic FMR1 interacting protein 1 Recombinant Rabbit Monoclonal Antibody



**Catalog #: 4004**

## Aliases

CYFIP1; Cytoplasmic FMR1 Interacting Protein 1; P140SRA-1; KIAA; Cytoplasmic FMRP Interacting Protein 1; Cytoplasmic FMR1-Interacting Protein 1; Specifically Rac1-Associated Protein 1; Selective Hybridizing Clone; P140sra-1; SRA-1; Sra-1; SRA1

## Background

Gene Name: CYFIP1

NCBI Gene Entry: [23191](#)

UniProt Entry: [Q7L576](#)

## Application Information

Molecular Weight: Predicted, 145 kDa; observed, 130 kDa

Clonality: Rabbit monoclonal antibody

Clone ID: 24GB9110

Species Reactivity: Human, mouse, rat

Applications Tested: Western blotting (WB), flow cytometry (FCM), immunocytochemistry (IC)

## Immunogen

A synthesized peptide derived from human CYFIP1

## Isotype

Rabbit IgG

## Storage Buffer

Supplied in PBS (pH 7.4) containing 50% glycerol, and 0.02% sodium azide.

## Storage

Store at -20 °C for one year.

## Recommended Dilutions

Western Blotting (WB): 1:1,000-1:5,000

Flow Cytometry (FCM): 1:2,000

Immunocytochemistry (IC): 1:100-1:1,000

**Note:** This product is for research use only.

---

### SUPPORT

SUPPORT@GENUINBIOTECH.COM  
TEL: +1-540-855-7041

### ORDERS

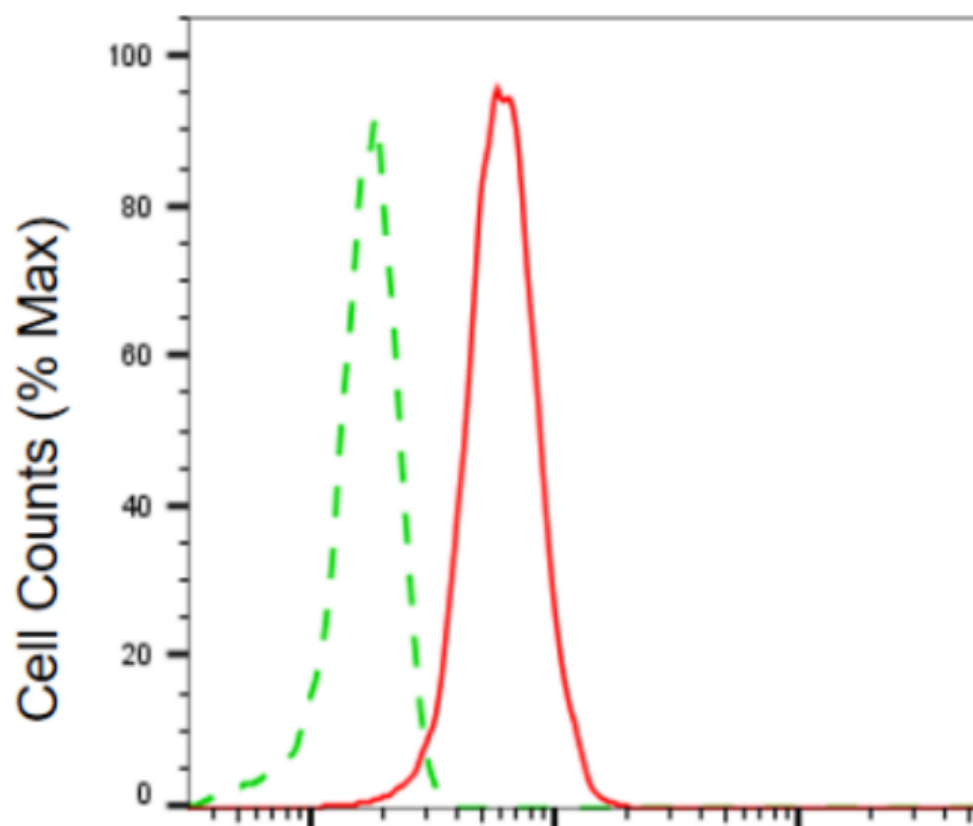
SALES@GENUINBIOTECH.COM  
FAX: +1-540-855-7041

[WWW.GENUINBIOTECH.COM](http://WWW.GENUINBIOTECH.COM)

# Anti-Cytoplasmic FMR1 interacting protein 1 Recombinant Rabbit Monoclonal Antibody

PAGE 2

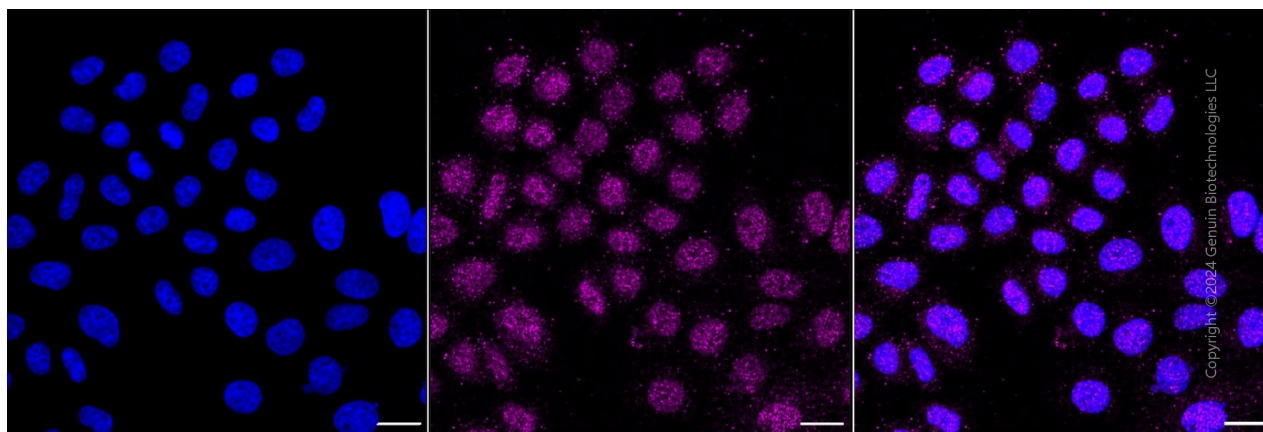
## Validation Data



Copyright ©2024 Genuin Biotechnologies LLC

### Cytoplasmic FMR1 interacting protein 1-Alexa Fluor® 647

Flow cytometric analysis of cytoplasmic FMR1 interacting protein 1 expression in HepG2 cells using anti-cytoplasmic FMR1 interacting protein 1 antibody (Cat#4004, 1:2,000). Green, isotype control; red, cytoplasmic FMR1 interacting protein 1.



Copyright ©2024 Genuin Biotechnologies LLC

#### SUPPORT

SUPPORT@GENUINBIOTECH.COM  
TEL: +1-540-855-7041

#### ORDERS

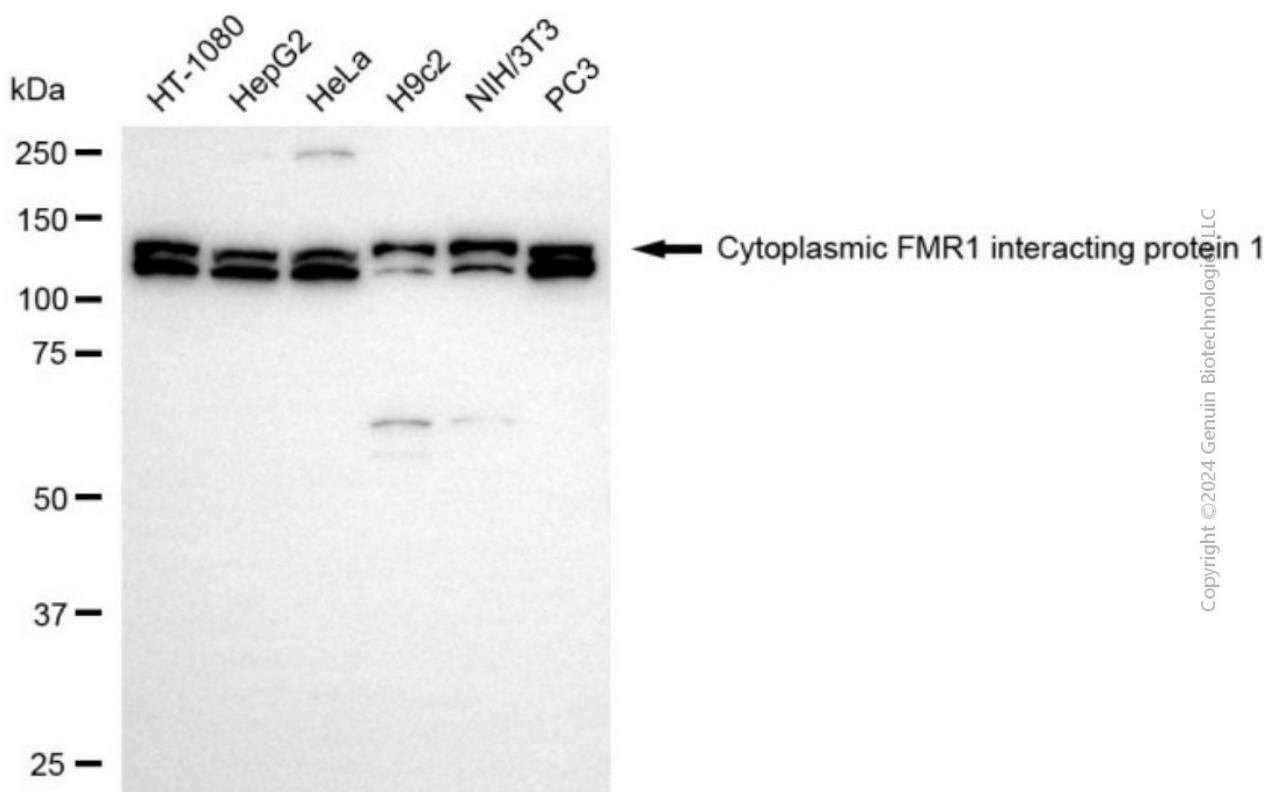
SALES@GENUINBIOTECH.COM  
FAX: +1-540-855-7041

WWW.GENUINBIOTECH.COM

## Anti-Cytoplasmic FMR1 interacting protein 1 Recombinant Rabbit Monoclonal Antibody

PAGE 3

Immunocytochemical staining of HepG2 cells with anti-Cytoplasmic FMR1 interacting protein 1 antibody (Cat#4004, 1:1,000). Nuclei were stained blue with DAPI; Cytoplasmic FMR1 interacting protein 1 was stained magenta with Alexa Fluor® 647. Images were taken using Leica stellaris 5. Protein abundance based on laser Intensity and smart gain: Medium. Scale bar, 20  $\mu$ m.



Western blotting analysis using anti-cytoplasmic FMR1 interacting protein 1 antibody (Cat#4004). Total cell lysates (30  $\mu$ g) from various cell lines were loaded and separated by SDS-PAGE. The blot was incubated with anti-cytoplasmic FMR1 interacting protein 1 antibody (Cat#4004, 1:5,000) and HRP-conjugated goat anti-rabbit secondary antibody (Cat#201, 1:20,000) respectively. Image was developed using NaQ™ ECL Substrate Kit (Cat#716).

### SUPPORT

SUPPORT@GENUINBIOTECH.COM  
TEL: +1-540-855-7041

### ORDERS

SALES@GENUINBIOTECH.COM  
FAX: +1-540-855-7041

WWW.GENUINBIOTECH.COM