

Anti-Chromosome 3 open reading frame 38 Recombinant Rabbit Monoclonal Antibody



Catalog #: 4007

Aliases

C3orf38; Chromosome 3 Open Reading Frame 38; Uncharacterized Protein C3orf38; Dense Incisors; MGC26717

Background

Gene Name: C3orf38

NCBI Gene Entry: [285237](#)

UniProt Entry: [Q5JPI3](#)

Application Information

Molecular Weight: Predicted, 38 kDa; observed, 35 kDa

Clonality: Rabbit monoclonal antibody

Clone ID: 24GB9125

Species Reactivity: Human, mouse, rat

Applications Tested: Western blotting (WB), immunocytochemistry (IC)

Immunogen

A synthesized peptide derived from human C3orf38

Isotype

Rabbit IgG

Storage Buffer

Supplied in PBS (pH 7.4) containing 50% glycerol, and 0.02% sodium azide.

Storage

Store at -20 °C for one year.

Recommended Dilutions

Western Blotting (WB): 1:1,000-1:5,000

Immunocytochemistry (IC): 1:100-1:1,000

Note: This product is for research use only.

Validation Data

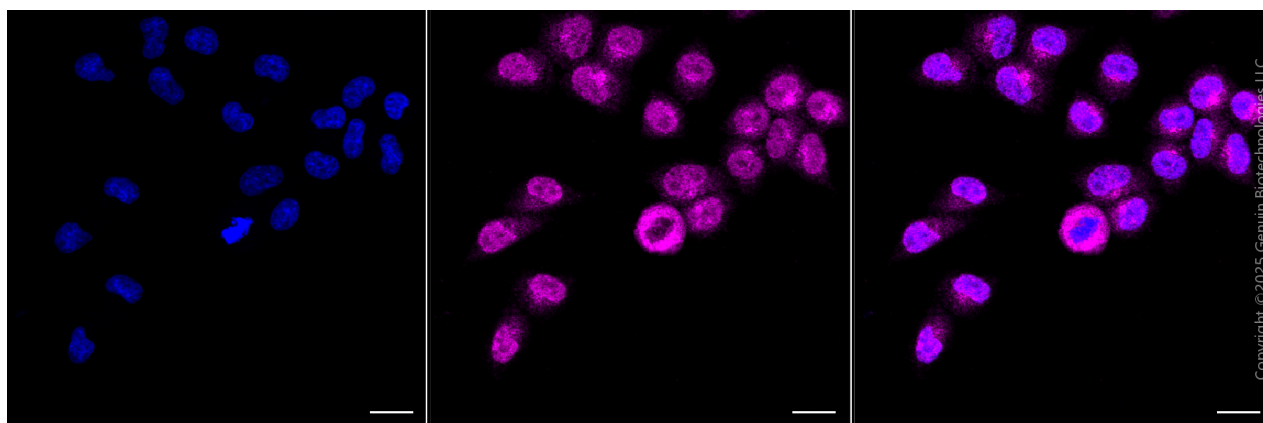
SUPPORT

SUPPORT@GENUINBIOTECH.COM
TEL: +1-540-855-7041

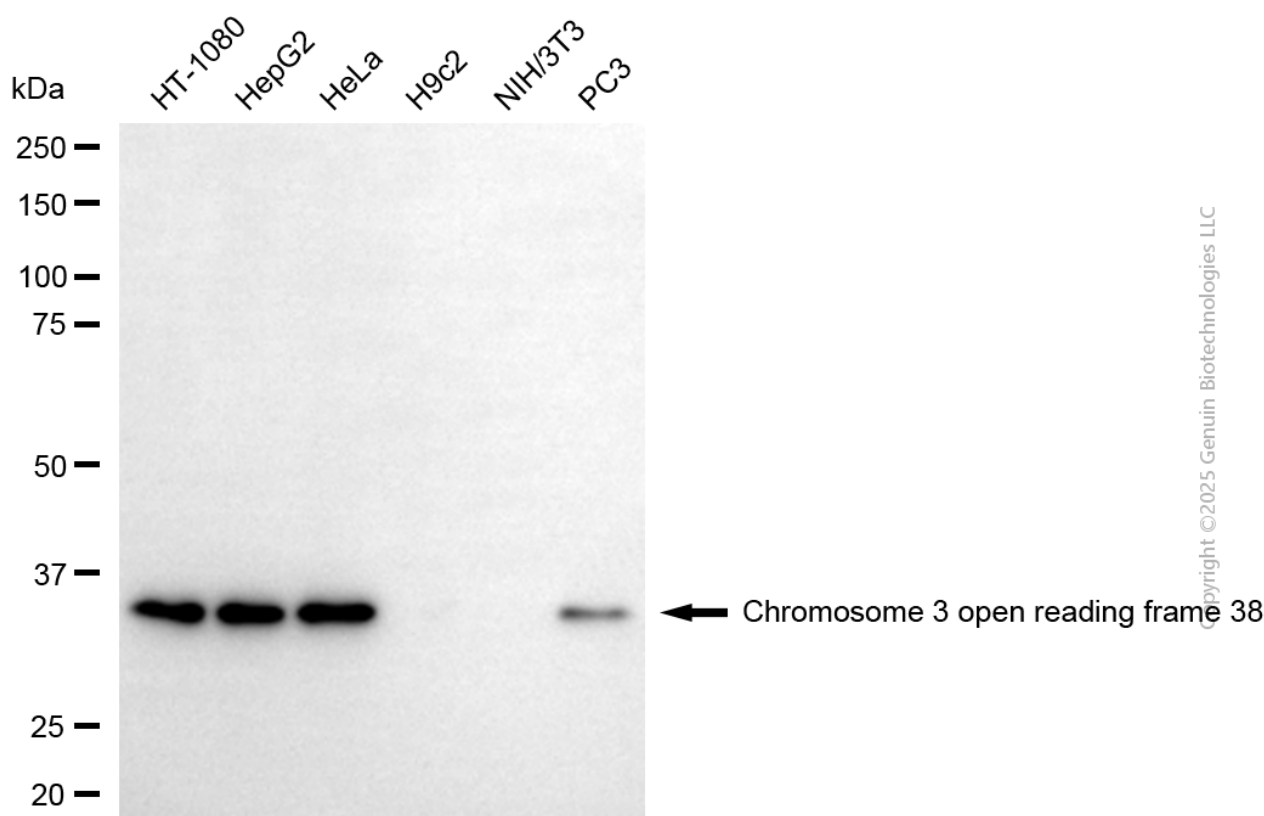
ORDERS

SALES@GENUINBIOTECH.COM
FAX: +1-540-855-7041

WWW.GENUINBIOTECH.COM



Immunocytochemical staining of HepG2 cells with anti-Chromosome 3 open reading frame 38 antibody (Cat#4007, 1:1,000). Nuclei were stained blue with DAPI; Chromosome 3 open reading frame 38 was stained magenta with Alexa Fluor® 647. Images were taken using Leica stellaris 5. Protein abundance based on laser Intensity and smart gain: High. Scale bar, 20 µm.



Western blotting analysis using anti-chromosome 3 open reading frame 38 antibody (Cat#4007). Total cell lysates (30 µg) from various cell lines were loaded and separated by SDS-PAGE. The blot was incubated with anti-chromosome 3 open reading frame 38 antibody (Cat#4007, 1:5,000) and HRP-conjugated goat anti-rabbit secondary antibody (Cat#201, 1:20,000) respectively. Image was developed using FeQ™ ECL Substrate Kit (Cat#226).