

Anti-Tripartite motif containing 24 Recombinant Rabbit Monoclonal Antibody



Catalog #: 4009

Aliases

TRIM24; Tripartite Motif Containing 24; RNF82; TIF1A; HTIF1; TIF1; RING-Type E3 Ubiquitin Transferase TIF1-Alpha; Transcription Intermediary Factor 1-Alpha; Transcriptional Intermediary Factor 1; E3 Ubiquitin-Protein Ligase TRIM24; RING Finger Protein 82; TIF1-Alpha; Tripartite Motif-Containing Protein 24; Tripartite Motif-Containing 24; EC 2.3.2.27; TIF1ALPHA; EC 6.3.2; Tif1a; PTC6; TF1A

Background

Gene Name: TRIM24

NCBI Gene Entry: [8805](#)

UniProt Entry: [O15164](#)

Application Information

Molecular Weight: Predicted, 117 kDa; observed, 130 kDa

Clonality: Rabbit monoclonal antibody

Clone ID: 24GB9135

Species Reactivity: Human, mouse

Applications Tested: Western blotting (WB), flow cytometry (FCM), immunocytochemistry (IC)

Immunogen

A synthesized peptide derived from human TRIM24

Isotype

Rabbit IgG

Storage Buffer

Supplied in PBS (pH 7.4) containing 50% glycerol, and 0.02% sodium azide.

Storage

Store at -20 °C for one year.

Recommended Dilutions

Western Blotting (WB): 1:1,000-1:5,000

Flow Cytometry (FCM): 1:2,000

Immunocytochemistry (IC): 1:100-1:1,000

SUPPORT

SUPPORT@GENUINBIOTECH.COM
TEL: +1-540-855-7041

ORDERS

SALES@GENUINBIOTECH.COM
FAX: +1-540-855-7041

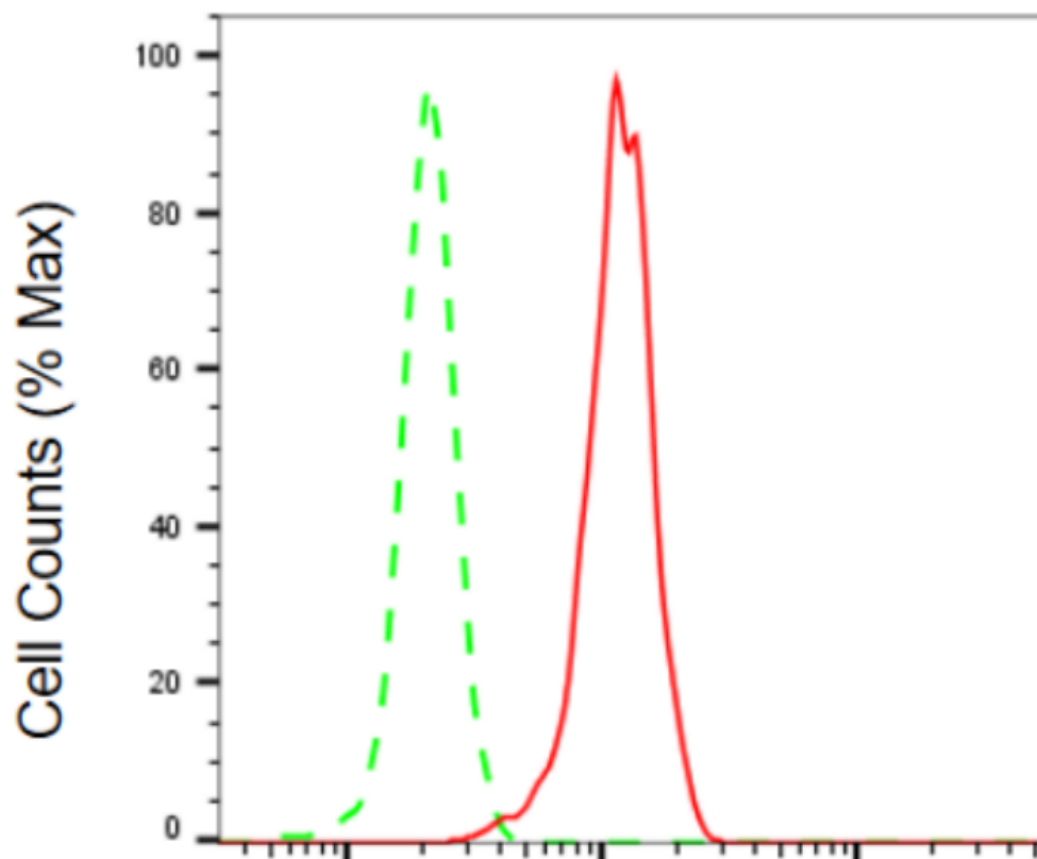
WWW.GENUINBIOTECH.COM

Anti-Tripartite motif containing 24 Recombinant Rabbit Monoclonal Antibody

PAGE 2

Note: This product is for research use only.

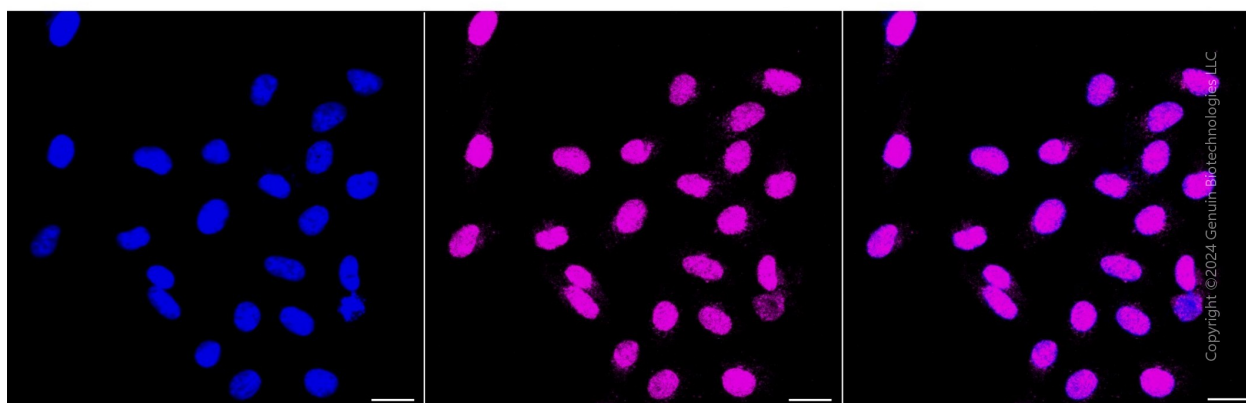
Validation Data



Copyright ©2024 Genuin Biotechnologies LLC

Tripartite motif containing 24-Alexa Fluor® 647

Flow cytometric analysis of tripartite motif containing 24 expression in HepG2 cells using anti-tripartite motif containing 24 antibody (Cat#4009, 1:2,000). Green, isotype control; red, tripartite motif containing 24.



SUPPORT

SUPPORT@GENUINBIOTECH.COM
TEL: +1-540-855-7041

ORDERS

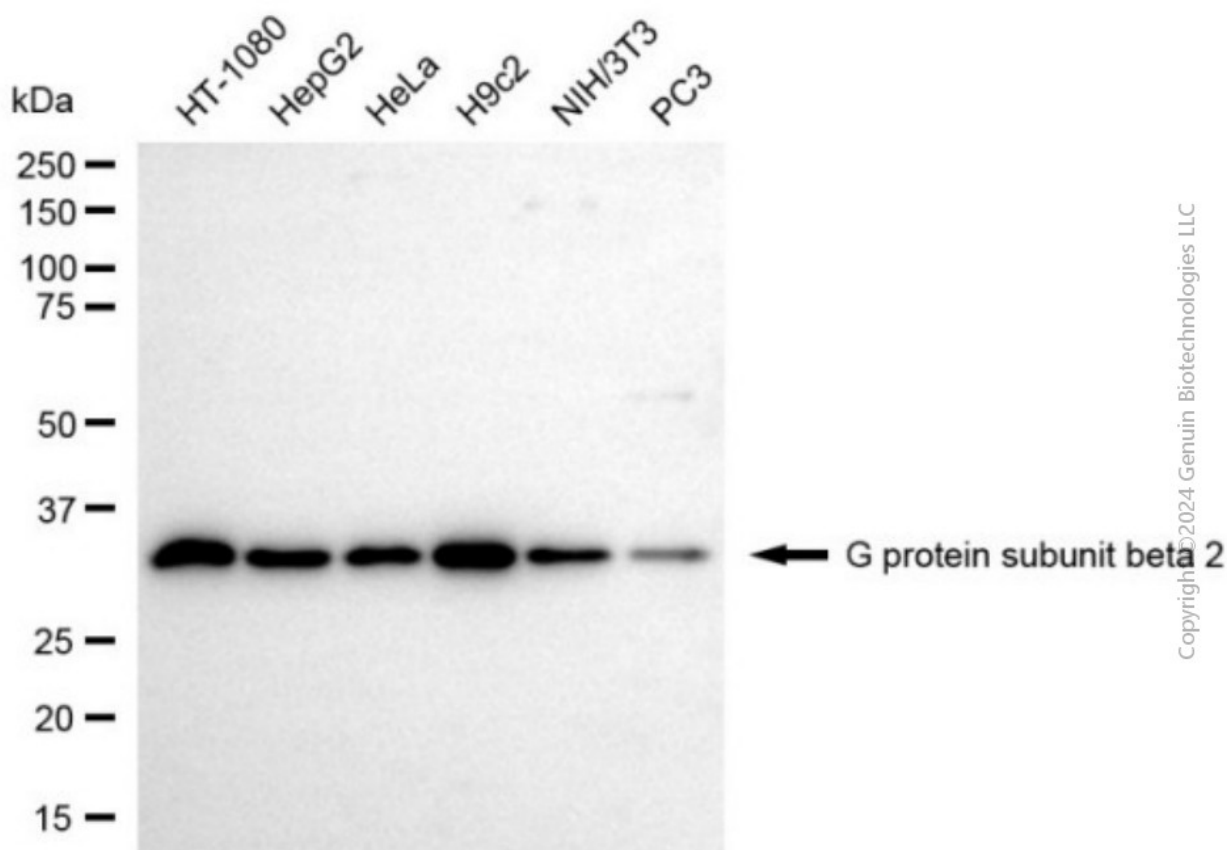
SALES@GENUINBIOTECH.COM
FAX: +1-540-855-7041

WWW.GENUINBIOTECH.COM

Anti-Tripartite motif containing 24 Recombinant Rabbit Monoclonal Antibody

PAGE 3

Immunocytochemical staining of HepG2 cells with anti-Tripartite motif containing 24 antibody (Cat#4009, 1:1,000). Nuclei were stained blue with DAPI; Tripartite motif containing 24 was stained magenta with Alexa Fluor® 647. Images were taken using Leica stellaris 5. Protein abundance based on laser Intensity and smart gain: Medium. Scale bar, 20 μ m.



Western blotting analysis using anti-tripartite motif containing 24 antibody (Cat#4009). Total cell lysates (30 μ g) from various cell lines were loaded and separated by SDS-PAGE. The blot was incubated with anti-tripartite motif containing 24 antibody (Cat#4009, 1:5,000) and HRP-conjugated goat anti-rabbit secondary antibody (Cat#201, 1:20,000) respectively. Image was developed using FeQ™ ECL Substrate Kit (Cat#226).

SUPPORT

SUPPORT@GENUINBIOTECH.COM
TEL: +1-540-855-7041

ORDERS

SALES@GENUINBIOTECH.COM
FAX: +1-540-855-7041

WWW.GENUINBIOTECH.COM