

# Anti-Inorganic Pyrophosphatase 1 Recombinant Rabbit Monoclonal Antibody



**Catalog #: 4012**

## Aliases

PPA1; Inorganic Pyrophosphatase 1; Pyrophosphate Phospho-Hydrolase; SID6-8061; Ppase; PP1; PP; Cytosolic Inorganic Pyrophosphatase; Pyrophosphatase (Inorganic)1; Inorganic Diphosphatase 1; Inorganic Pyrophosphatase; EC 3.6.1.1; Epididymis Secretory Sperm Binding Protein Li 66p; Diphosphate Phosphohydrolase; Pyrophosphatase (Inorganic); Pyrophosphatase 1; HEL-S-66p; PPase

## Background

Gene Name: PPA1

NCBI Gene Entry: [5464](#)

UniProt Entry: [Q15181](#)

## Application Information

Molecular Weight: Predicted, 33 kDa; observed, 33 kDa

Clonality: Rabbit monoclonal antibody

Clone ID: 24GB9150

Species Reactivity: Human, mouse, rat

Applications Tested: Western blotting (WB), flow cytometry (FCM), immunocytochemistry (IC)

## Immunogen

A synthesized peptide derived from human Pyrophosphatase 1

## Isotype

Rabbit IgG

## Storage Buffer

Supplied in PBS (pH 7.4) containing 50% glycerol, and 0.02% sodium azide.

## Storage

Store at -20 °C for one year.

## Recommended Dilutions

Western Blotting (WB): 1:1,000-1:5,000

Flow Cytometry (FCM): 1:2,000

Immunocytochemistry (IC): 1:100-1:1,000

---

### SUPPORT

SUPPORT@GENUINBIOTECH.COM  
TEL: +1-540-855-7041

### ORDERS

SALES@GENUINBIOTECH.COM  
FAX: +1-540-855-7041

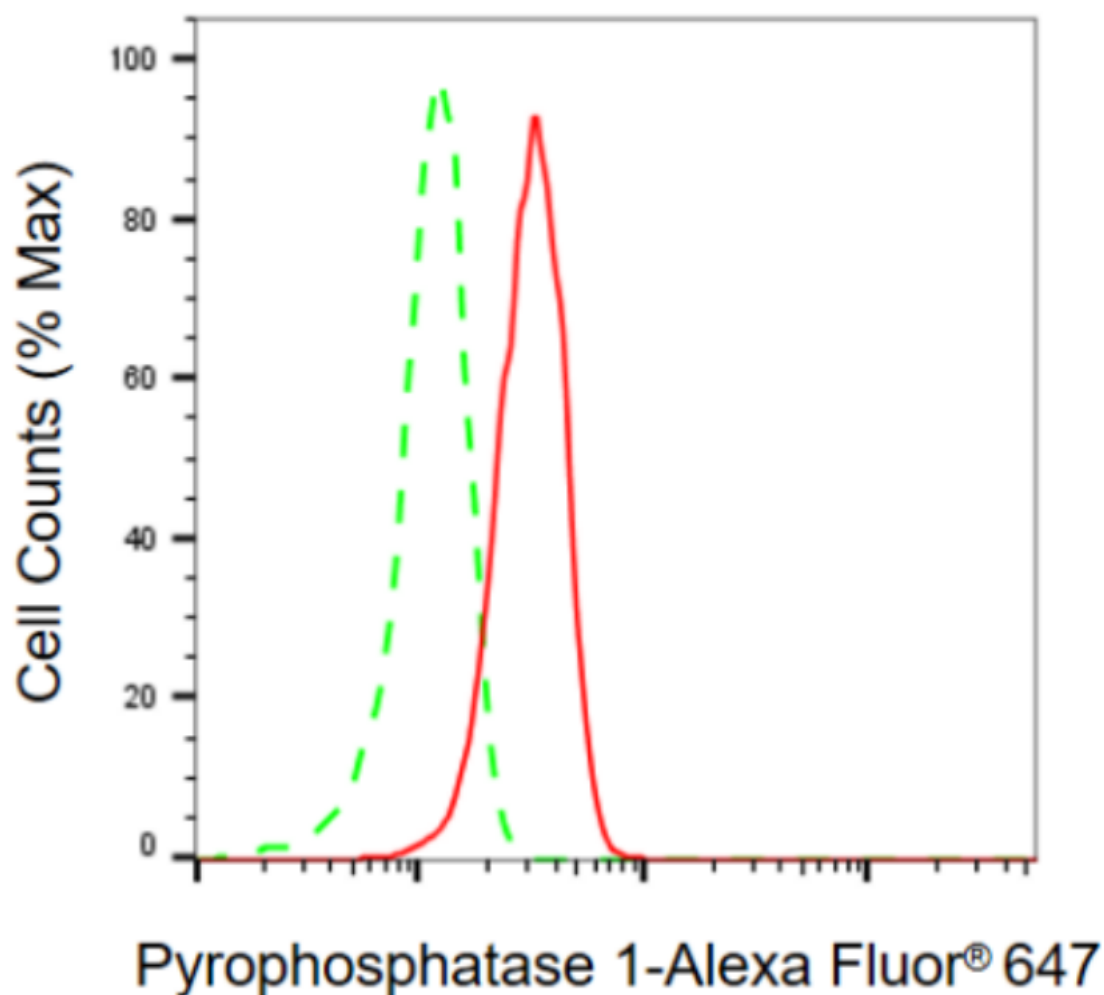
[WWW.GENUINBIOTECH.COM](http://WWW.GENUINBIOTECH.COM)

# Anti-Inorganic Pyrophosphatase 1 Recombinant Rabbit Monoclonal Antibody

PAGE 2

**Note:** This product is for research use only.

## Validation Data



Copyright ©2024 Genuin Biotechnologies LLC

Flow cytometric analysis of pyrophosphatase 1 expression in HT-1080 cells using anti-pyrophosphatase 1 antibody (Cat#4012, 1:2,000). Green, isotype control; red, pyrophosphatase 1.

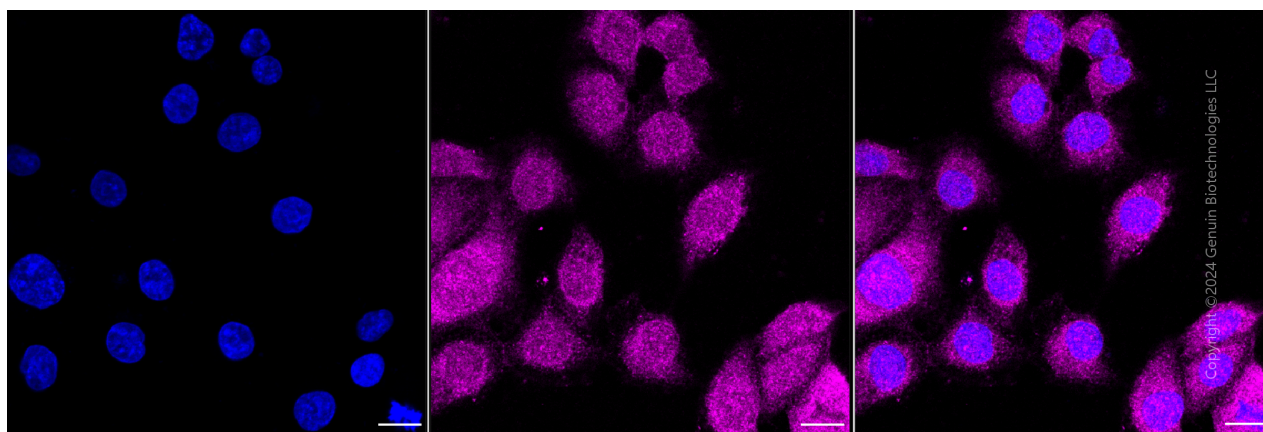
### SUPPORT

SUPPORT@GENUINBIOTECH.COM  
TEL: +1-540-855-7041

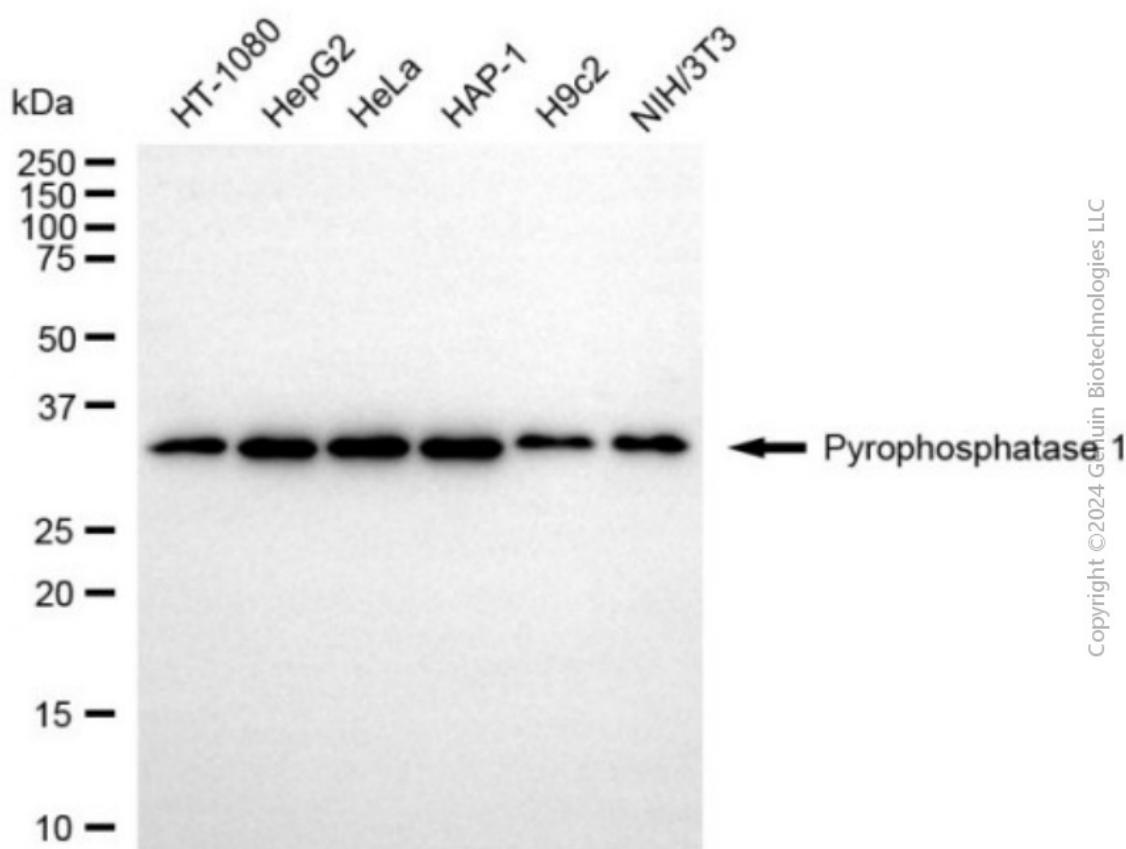
### ORDERS

SALES@GENUINBIOTECH.COM  
FAX: +1-540-855-7041

[WWW.GENUINBIOTECH.COM](http://WWW.GENUINBIOTECH.COM)



Immunocytochemical staining of HT-1080 cells with anti-pyrophosphatase 1 antibody (Cat#4012, 1:1,000). Nuclei were stained blue with DAPI; Pyrophosphatase 1 was stained magenta with Alexa Fluor® 647. Images were taken using Leica stellaris 5. Protein abundance based on laser Intensity and smart gain: Medium. Scale bar, 20  $\mu$ m.



Western blotting analysis using anti-pyrophosphatase 1 antibody (Cat#4012). Total cell lysates (30  $\mu$ g) from various cell lines were loaded and separated by SDS-PAGE. The blot was incubated with anti-pyrophosphatase 1 antibody (Cat#4012, 1:5,000) and HRP-conjugated goat anti-rabbit secondary antibody (Cat#201, 1:20,000) respectively. Image was developed using NaQ™ ECL

## SUPPORT

SUPPORT@GENUINBIOTECH.COM  
TEL: +1-540-855-7041

## ORDERS

SALES@GENUINBIOTECH.COM  
FAX: +1-540-855-7041

[WWW.GENUINBIOTECH.COM](http://WWW.GENUINBIOTECH.COM)

# **Anti-Inorganic Pyrophosphatase 1 Recombinant Rabbit Monoclonal Antibody**

PAGE 4

Substrate Kit (Cat#716).

---

## **SUPPORT**

SUPPORT@GENUINBIOTECH.COM  
TEL: +1-540-855-7041

## **ORDERS**

SALES@GENUINBIOTECH.COM  
FAX: +1-540-855-7041

**WWW.GENUINBIOTECH.COM**