

Anti-Acetyl-CoA acetyltransferase 1 Recombinant Rabbit Monoclonal Antibody



Catalog #: 4013

Aliases

ACAT1; Acetyl-CoA Acetyltransferase 1; THIL; ACAT; Acetyl-CoA Acetyltransferase, Mitochondrial; Acetyl-Coenzyme A Acetyltransferase 1; Acetoacetyl Coenzyme A Thiolase; Acetoacetyl-CoA Thiolase; EC 2.3.1.9; MAT; T2; Mitochondrial Acetoacetyl-CoA Thiolase; Testicular Tissue Protein Li 198; EC 2.3.1

Background

Gene Name: ACAT1
NCBI Gene Entry: [38](#)
UniProt Entry: [P24752](#)

Application Information

Molecular Weight: Predicted, 45 kDa; observed, 40 kDa
Clonality: Rabbit monoclonal antibody
Clone ID: 24GB9155
Species Reactivity: Human, rat
Applications Tested: Western blotting (WB), flow cytometry (FCM), immunocytochemistry (IC)

Immunogen

A synthesized peptide derived from human ACAT1

Isotype

Rabbit IgG

Storage Buffer

Supplied in PBS (pH 7.4) containing 50% glycerol, and 0.02% sodium azide.

Storage

Store at -20 °C for one year.

Recommended Dilutions

Western Blotting (WB): 1:1,000-1:5,000
Flow Cytometry (FCM): 1:2,000
Immunocytochemistry (IC): 1:100-1:1,000

SUPPORT

SUPPORT@GENUINBIOTECH.COM
TEL: +1-540-855-7041

ORDERS

SALES@GENUINBIOTECH.COM
FAX: +1-540-855-7041

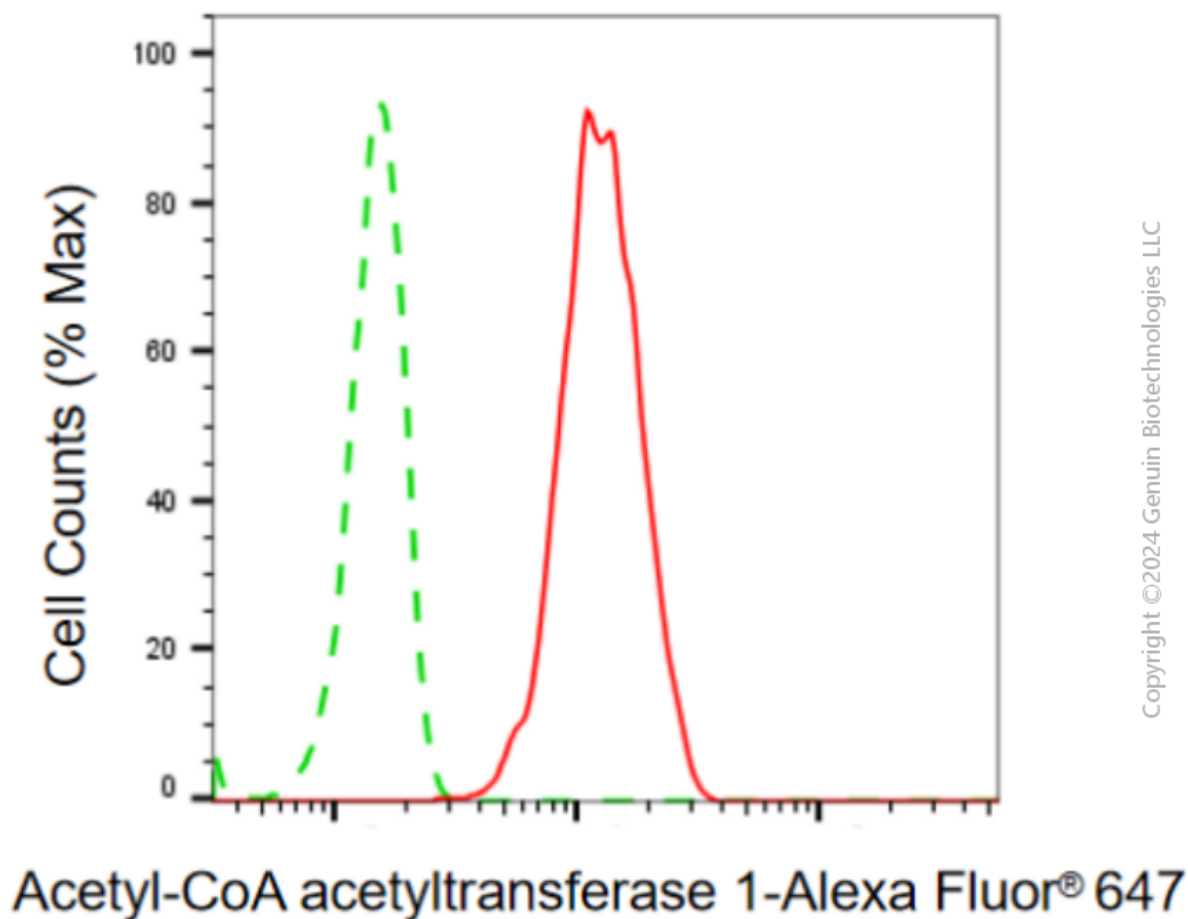
WWW.GENUINBIOTECH.COM

Anti-Acetyl-CoA acetyltransferase 1 Recombinant Rabbit Monoclonal Antibody

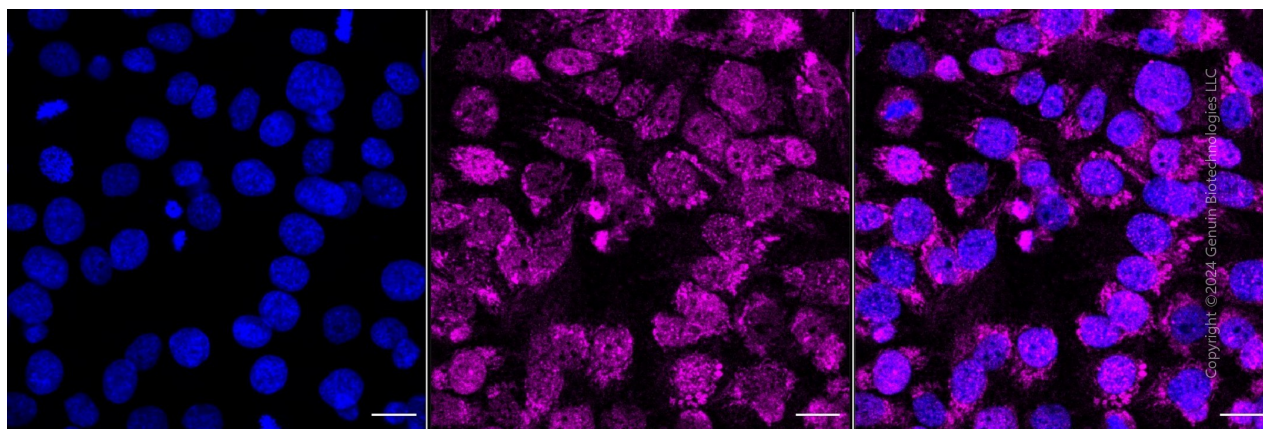
PAGE 2

Note: This product is for research use only.

Validation Data



Flow cytometric analysis of acetyl-CoA acetyltransferase 1 expression in HT-1080 cells using anti-acetyl-CoA acetyltransferase 1 antibody (Cat#4013, 1:2,000). Green, isotype control; red, acetyl-CoA acetyltransferase 1.



SUPPORT

SUPPORT@GENUINBIOTECH.COM
TEL: +1-540-855-7041

ORDERS

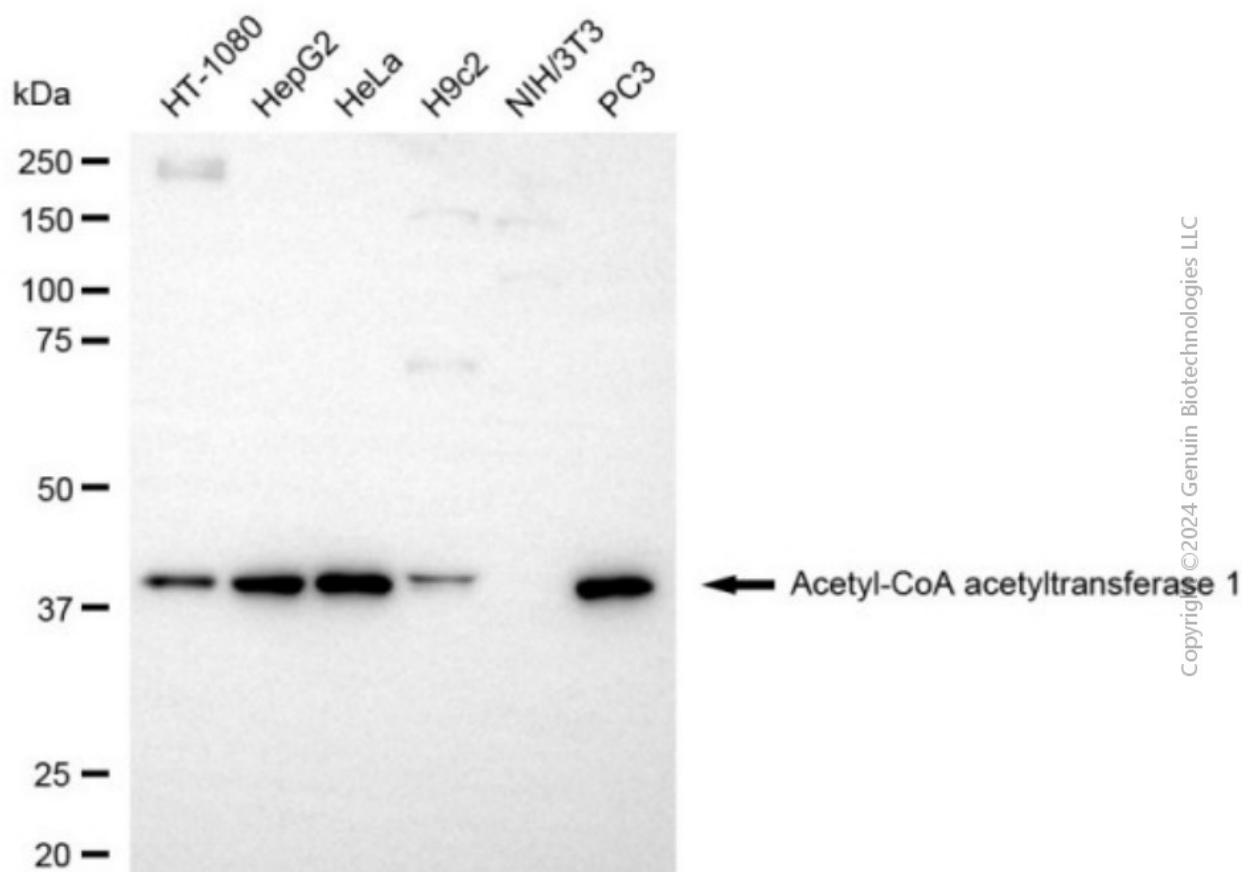
SALES@GENUINBIOTECH.COM
FAX: +1-540-855-7041

WWW.GENUINBIOTECH.COM

Anti-Acetyl-CoA acetyltransferase 1 Recombinant Rabbit Monoclonal Antibody

PAGE 3

Immunocytochemical staining of HT-1080 cells with anti-Acetyl-CoA acetyltransferase 1 antibody (Cat#4013, 1:1,000). Nuclei were stained blue with DAPI; Acetyl-CoA acetyltransferase 1 with Alexa Fluor® 647. Images were taken using Leica stellaris 5. Protein abundance based on laser Intensity and smart gain: Medium. Scale bar, 20 µm.



Western blotting analysis using anti-acetyl-CoA acetyltransferase 1 antibody (Cat#4013). Total cell lysates (30 µg) from various cell lines were loaded and separated by SDS-PAGE. The blot was incubated with anti-acetyl-CoA acetyltransferase 1 antibody (Cat#4013, 1:5,000) and HRP-conjugated goat anti-rabbit secondary antibody (Cat#201, 1:20,000) respectively. Image was developed using NaQ™ ECL Substrate Kit (Cat#716).

SUPPORT

SUPPORT@GENUINBIOTECH.COM
TEL: +1-540-855-7041

ORDERS

SALES@GENUINBIOTECH.COM
FAX: +1-540-855-7041

WWW.GENUINBIOTECH.COM