

Anti-AdSS 2 Recombinant Rabbit Monoclonal Antibody



Catalog #: 4014

Aliases

ADSS2; Adenylosuccinate Synthase 2; ADSS; Adenylosuccinate Synthetase, Acidic Isozyme; Adenylosuccinate Synthetase, Liver Isozyme; Adenylosuccinate Synthetase Isozyme 2; L-Type Adenylosuccinate Synthetase; IMP--Aspartate Ligase 2; EC 6.3.4.4; AMPSase 2; Adenylosuccinate Synthetase (Ade(-)H-Complementing); Epididymis Secretory Sperm Binding Protein; Adenylosuccinate Synthase; ADSS 2; AdSS 2; ADEH

Background

Gene Name: ADSS2

NCBI Gene Entry: [159](#)

UniProt Entry: [P30520](#)

Application Information

Molecular Weight: Predicted, 50 kDa; observed, 45 kDa

Clonality: Rabbit monoclonal antibody

Clone ID: 24GB9160

Species Reactivity: Human, mouse, rat

Applications Tested: Western blotting (WB), flow cytometry (FCM), immunocytochemistry (IC)

Immunogen

A synthesized peptide derived from human ADSS2

Isotype

Rabbit IgG

Storage Buffer

Supplied in PBS (pH 7.4) containing 50% glycerol, and 0.02% sodium azide.

Storage

Store at -20 °C for one year.

Recommended Dilutions

Western Blotting (WB): 1:1,000-1:5,000

Flow Cytometry (FCM): 1:2,000

Immunocytochemistry (IC): 1:100-1:1,000

SUPPORT

SUPPORT@GENUINBIOTECH.COM
TEL: +1-540-855-7041

ORDERS

SALES@GENUINBIOTECH.COM
FAX: +1-540-855-7041

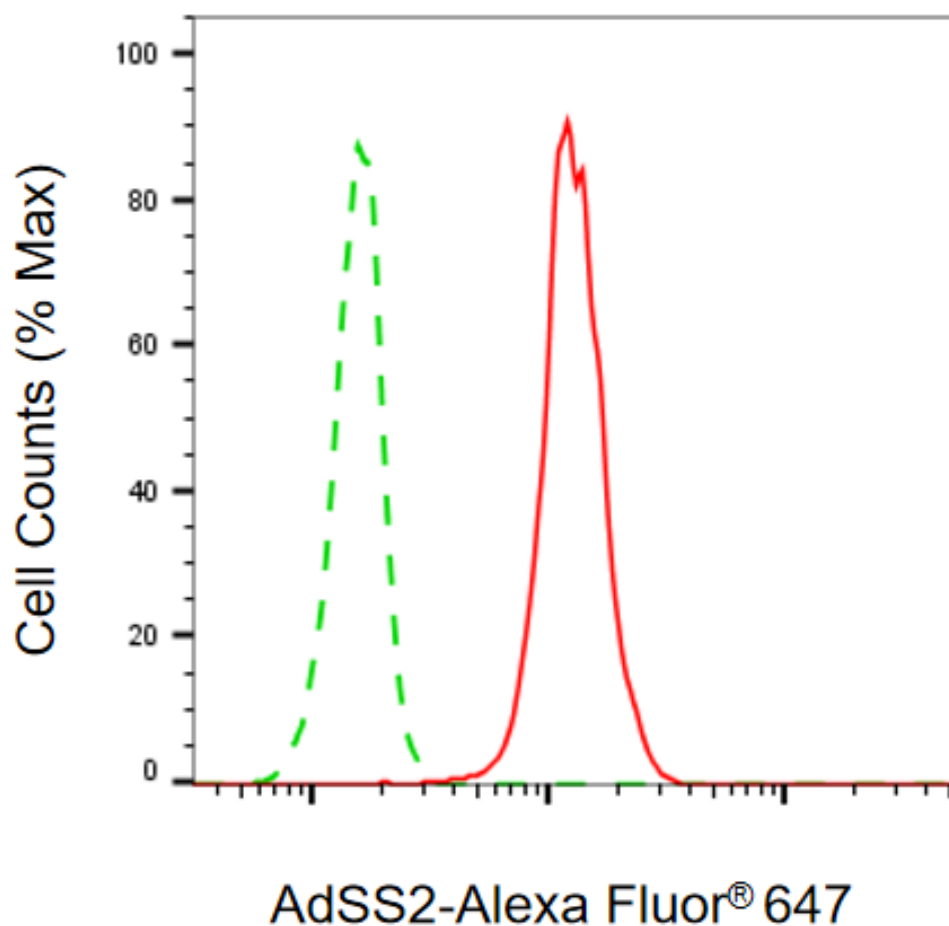
WWW.GENUINBIOTECH.COM

Anti-AdSS 2 Recombinant Rabbit Monoclonal Antibody

PAGE 2

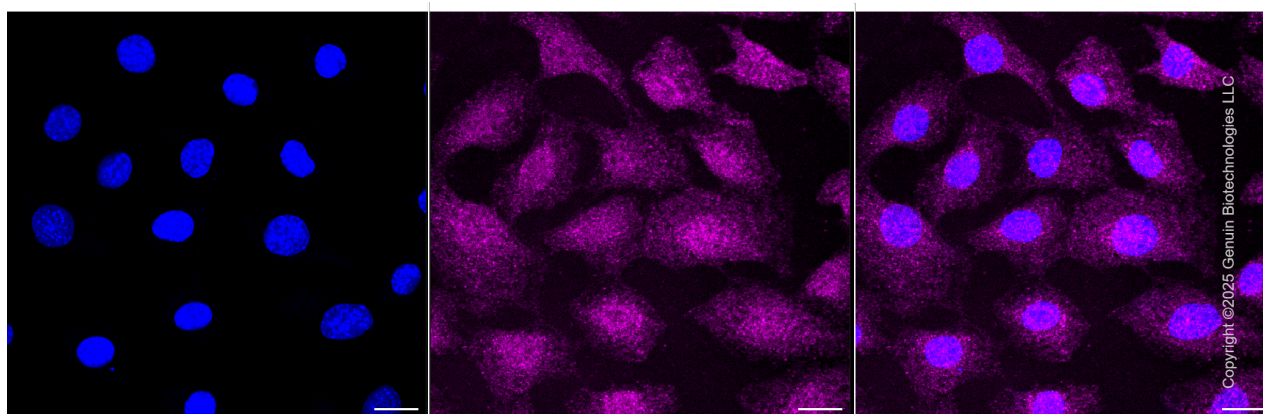
Note: This product is for research use only.

Validation Data



Copyright ©2025 Genuin Biotechnologies LLC

Flow cytometric analysis of AdSS2 expression in C2C12 cells using anti-AdSS2 antibody (Cat#4014, 1:2,000). Green, isotype control; red, AdSS2.



SUPPORT

SUPPORT@GENUINBIOTECH.COM
TEL: +1-540-855-7041

ORDERS

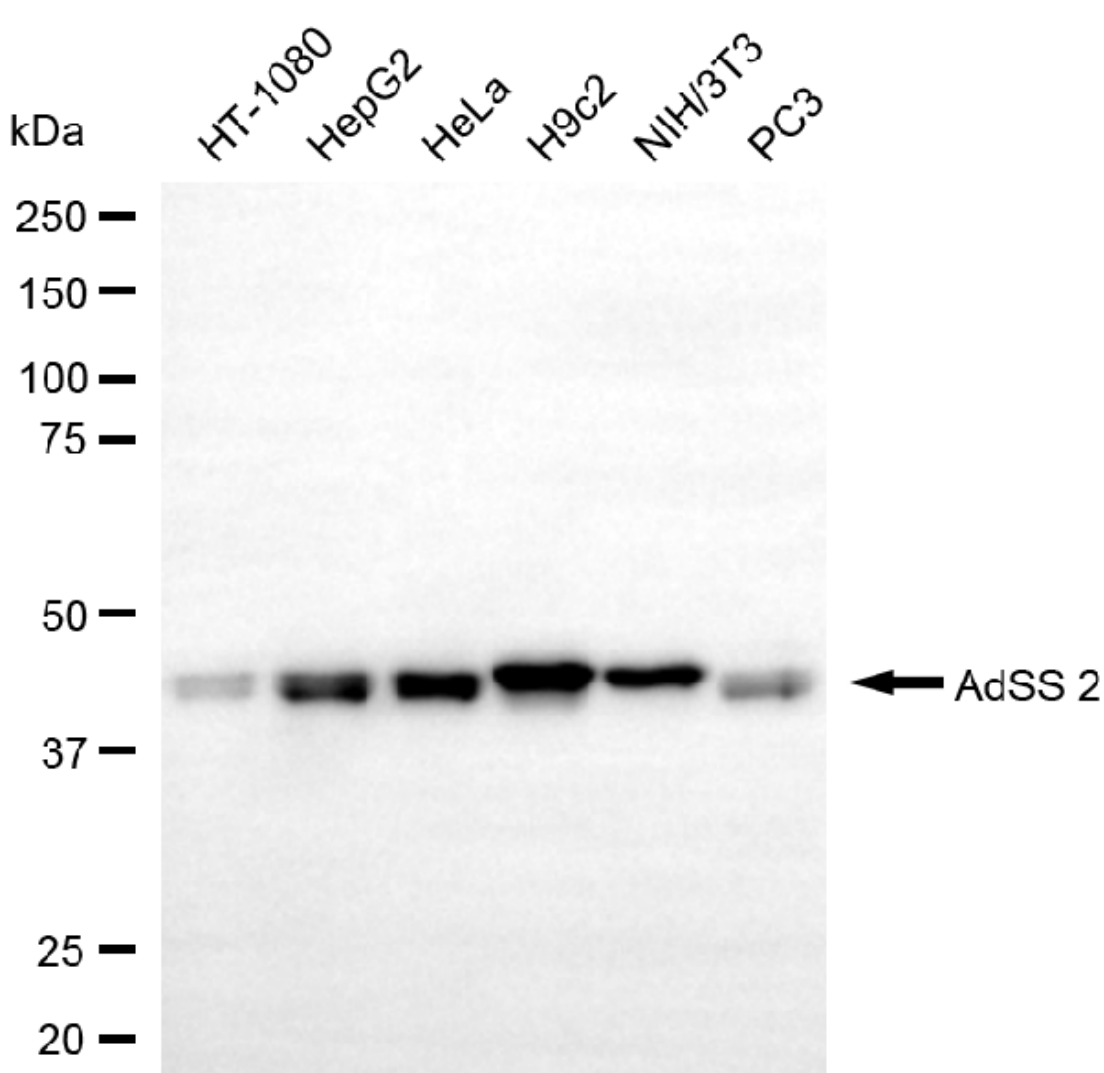
SALES@GENUINBIOTECH.COM
FAX: +1-540-855-7041

WWW.GENUINBIOTECH.COM

Anti-AdSS 2 Recombinant Rabbit Monoclonal Antibody

PAGE 3

Immunocytochemical staining of C2C12 cells with anti-AdSS 2 antibody (Cat#4014, 1:1,000). Nuclei were stained blue with DAPI; AdSS 2 was stained magenta with Alexa Fluor® 647. Images were taken using Leica stellaris 5. Protein abundance based on laser Intensity and smart gain: Low. Scale bar, 20 μ m.



Copyright ©2025 Genuin Biotechnologies LLC

Western blotting analysis using anti-AdSS 2 antibody (Cat#4014). Total cell lysates (30 μ g) from various cell lines were loaded and separated by SDS-PAGE. The blot was incubated with anti-AdSS 2 antibody (Cat#4014, 1:5,000) and HRP-conjugated goat anti-rabbit secondary antibody (Cat#201, 1:20,000) respectively. Image was developed using NaQ™ ECL Substrate Kit (Cat#716).

SUPPORT

SUPPORT@GENUINBIOTECH.COM
TEL: +1-540-855-7041

ORDERS

SALES@GENUINBIOTECH.COM
FAX: +1-540-855-7041

WWW.GENUINBIOTECH.COM