

Anti-Cyclin dependent kinase 16 Recombinant Rabbit Monoclonal Antibody



Catalog #: 4017

Aliases

CDK16; Cyclin Dependent Kinase 16; PCTAIRE1; PCTGAIRE; PCTAIRE; PCTK1; Serine/Threonine-Protein Kinase PCTAIRE-1; Cell Division Protein Kinase 16; PCTAIRE-Motif Protein Kinase; Cyclin-Dependent Kinase 16; EC 2.7.11.22; FLJ16665; Testis Secretory Sperm-Binding Protein Li 224n; Serine/Threonine-Protein Kinase; PCTAIRE Protein Kinase; EC 2.7.11

Background

Gene Name: CDK16

NCBI Gene Entry: [5127](#)

UniProt Entry: [Q00536](#)

Application Information

Molecular Weight: Predicted, 56 kDa; observed, 62-68 kDa

Clonality: Rabbit monoclonal antibody

Clone ID: 24GB9175

Species Reactivity: Human, mouse, rat

Applications Tested: Western blotting (WB), flow cytometry (FCM), immunocytochemistry (IC)

Immunogen

A synthesized peptide derived from human PCTAIRE1

Isotype

Rabbit IgG

Storage Buffer

Supplied in PBS (pH 7.4) containing 50% glycerol, and 0.02% sodium azide.

Storage

Store at -20 °C for one year.

Recommended Dilutions

Western Blotting (WB): 1:1,000-1:5,000

Flow Cytometry (FCM): 1:2,000

Immunocytochemistry (IC): 1:100-1:1,000

SUPPORT

SUPPORT@GENUINBIOTECH.COM
TEL: +1-540-855-7041

ORDERS

SALES@GENUINBIOTECH.COM
FAX: +1-540-855-7041

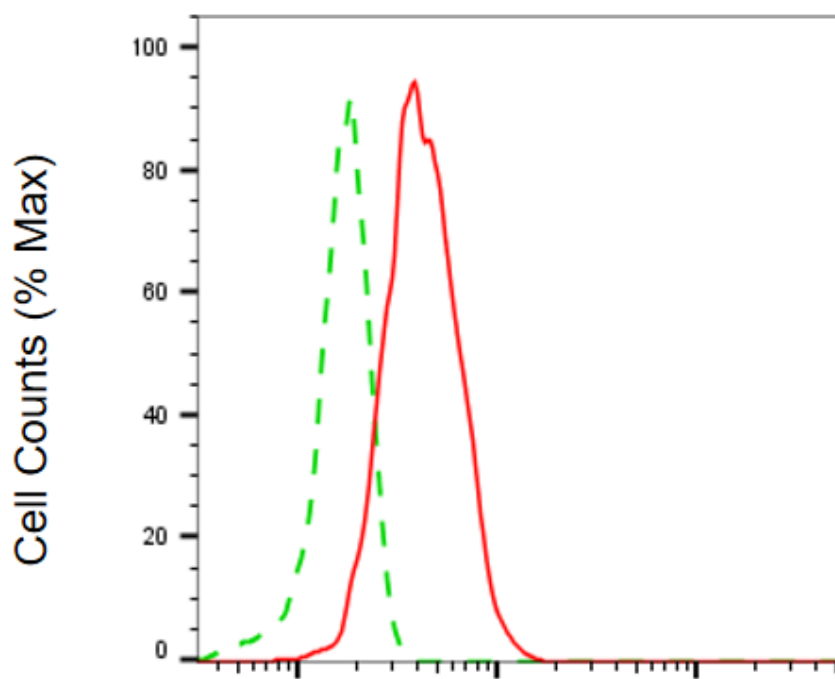
WWW.GENUINBIOTECH.COM

Anti-Cyclin dependent kinase 16 Recombinant Rabbit Monoclonal Antibody

PAGE 2

Note: This product is for research use only.

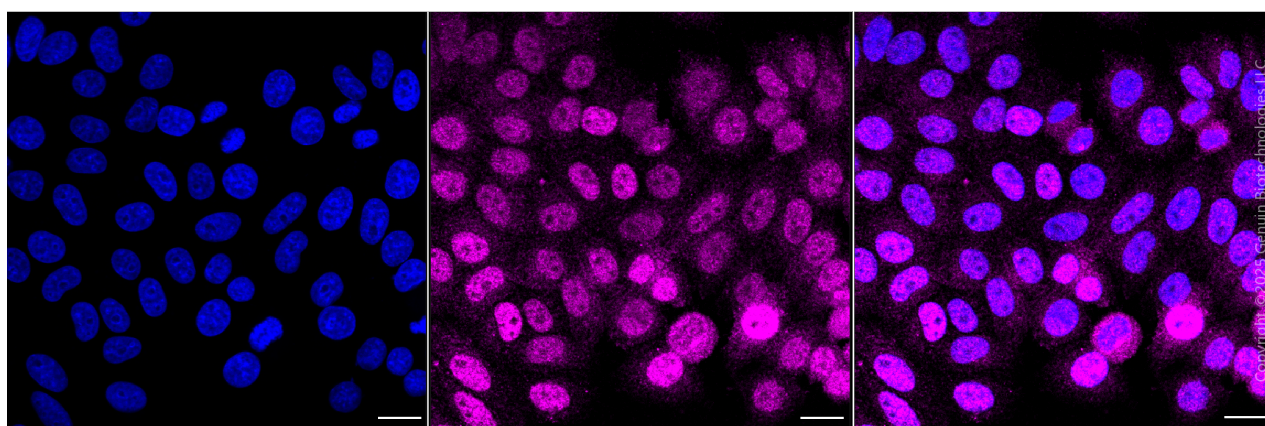
Validation Data



Copyright ©2025 Genuin Biotechnologies LLC

Cyclin dependent kinase 16-Alexa Fluor® 647

Flow cytometric analysis of Cyclin dependent kinase 16 expression in HepG2 cells using anti-Cyclin dependent kinase 16 antibody (Cat#4017, 1:2,000). Green, isotype control; red, Cyclin dependent kinase 16.



Immunocytochemical staining of HepG2 cells with anti-Cyclin dependent kinase 16 antibody (Cat#4017, 1:1,000). Nuclei were stained blue with DAPI; Cyclin dependent kinase 16 was stained

SUPPORT

SUPPORT@GENUINBIOTECH.COM
TEL: +1-540-855-7041

ORDERS

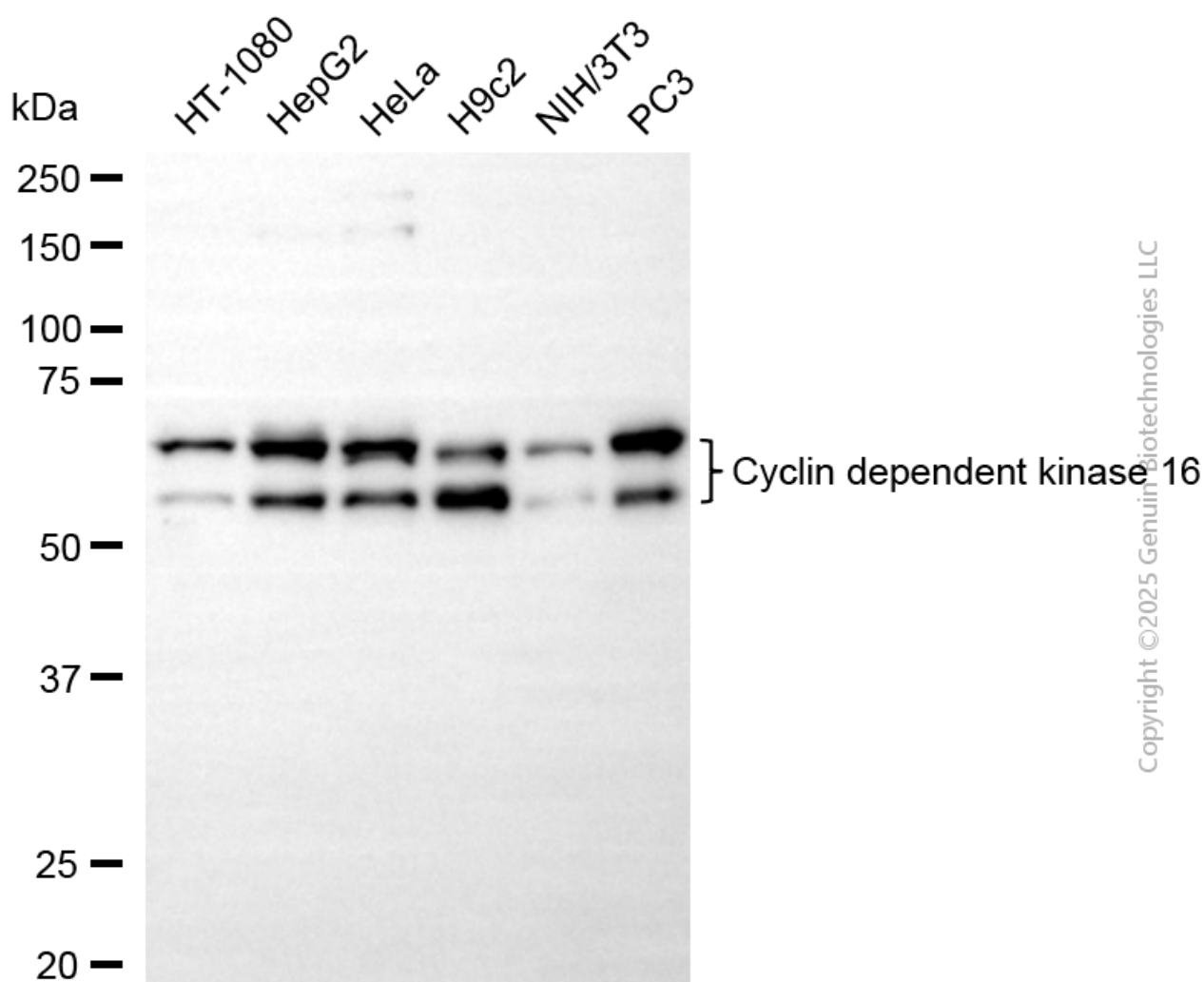
SALES@GENUINBIOTECH.COM
FAX: +1-540-855-7041

WWW.GENUINBIOTECH.COM

Anti-Cyclin dependent kinase 16 Recombinant Rabbit Monoclonal Antibody

PAGE 3

magenta with Alexa Fluor® 647. Images were taken using Leica stellaris 5. Protein abundance based on laser Intensity and smart gain: Medium. Scale bar, 20 μ m.



Copyright ©2025 Genuin Biotechnologies LLC

Western blotting analysis using anti-cyclin dependent kinase 16 antibody (Cat#4017). Total cell lysates (30 μ g) from various cell lines were loaded and separated by SDS-PAGE. The blot was incubated with anti-cyclin dependent kinase 16 antibody (Cat#4017, 1:5,000) and HRP-conjugated goat anti-rabbit secondary antibody (Cat#201, 1:20,000) respectively. Image was developed using NaQ™ ECL Substrate Kit (Cat#716).

SUPPORT

SUPPORT@GENUINBIOTECH.COM
TEL: +1-540-855-7041

ORDERS

SALES@GENUINBIOTECH.COM
FAX: +1-540-855-7041

WWW.GENUINBIOTECH.COM