

Anti-Glycogen synthase kinase 3 beta Recombinant Rabbit Monoclonal Antibody



Catalog #: 4019

Aliases

Glycogen Synthase Kinase 3 Beta; Serine/Threonine-Protein Kinase GSK3B; Glycogen Synthase Kinase-3 Beta; EC 2.7.11.26; GSK-3 Beta; EC 2.7.11.1; EC 2.7.11

Background

Gene Name: GSK3B

NCBI Gene Entry: [2932](#)

UniProt Entry: [P49841](#)

Application Information

Molecular Weight: Predicted, 47 kDa; observed, 40 kDa

Clonality: Rabbit monoclonal antibody

Clone ID: 24GB9185

Species Reactivity: Human, mouse, rat

Applications Tested: Western blotting (WB), flow cytometry (FCM), immunocytochemistry (IC)

Immunogen

A synthesized peptide derived from human GSK3 beta

Isotype

Rabbit IgG

Storage Buffer

Supplied in PBS (pH 7.4) containing 50% glycerol, and 0.02% sodium azide.

Storage

Store at -20 °C for one year.

Recommended Dilutions

Western Blotting (WB): 1:1,000-1:5,000

Flow Cytometry (FCM): 1:2,000

Immunocytochemistry (IC): 1:100-1:1,000

Note: This product is for research use only.

Validation Data

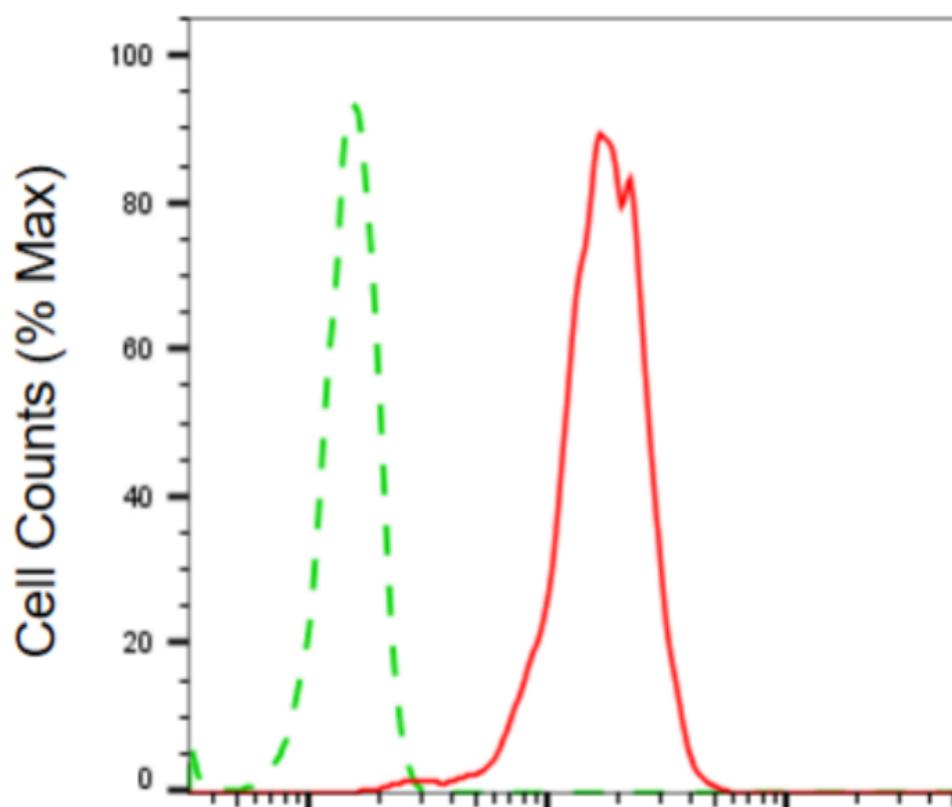
SUPPORT

SUPPORT@GENUINBIOTECH.COM
TEL: +1-540-855-7041

ORDERS

SALES@GENUINBIOTECH.COM
FAX: +1-540-855-7041

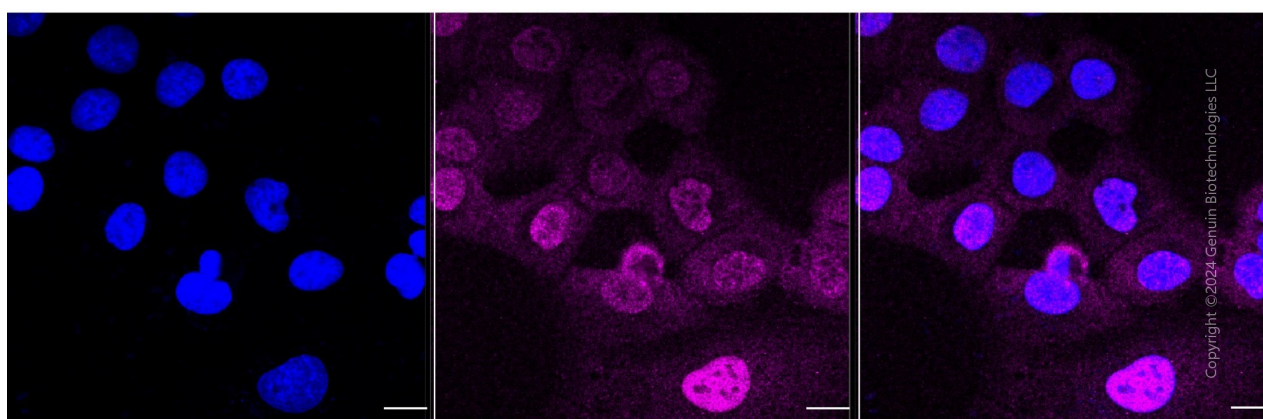
WWW.GENUINBIOTECH.COM



Copyright ©2024 Genuin Biotechnologies LLC

Glycogen synthase kinase 3 beta-Alexa Fluor® 647

Flow cytometric analysis of glycogen synthase kinase 3 beta expression in HT-1080 cells using anti-glycogen synthase kinase 3 beta antibody (Cat#4019, 1:2,000). Green, isotype control; red, glycogen synthase kinase 3 beta.



Copyright ©2024 Genuin Biotechnologies LLC

Immunocytochemical staining of HT-1080 cells with anti-Glycogen synthase kinase 3 beta antibody (Cat#4019, 1:1,000). Nuclei were stained blue with DAPI; Glycogen synthase kinase 3 beta was stained magenta with Alexa Fluor® 647. Images were taken using Leica stellaris 5. Protein abundance based on laser Intensity and smart gain: Medium. Scale bar, 20 µm.

SUPPORT

SUPPORT@GENUINBIOTECH.COM
TEL: +1-540-855-7041

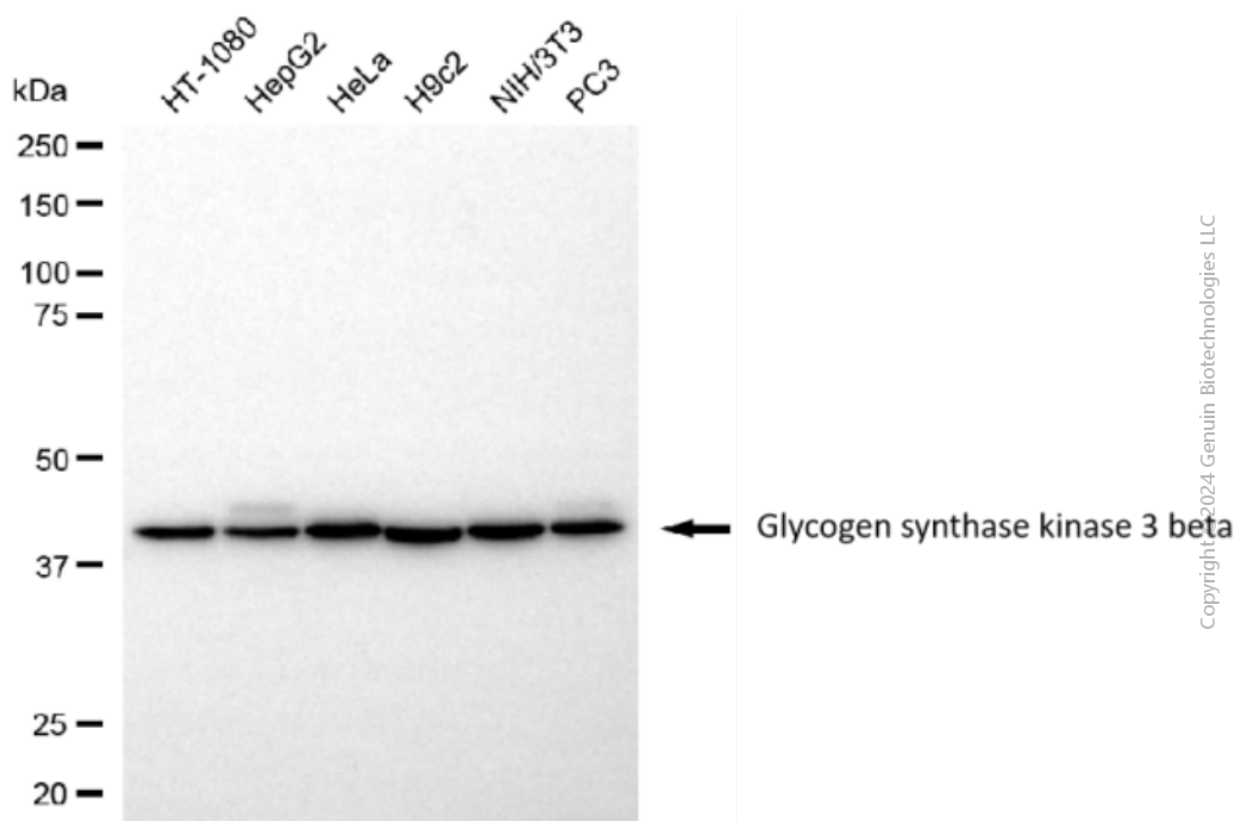
ORDERS

SALES@GENUINBIOTECH.COM
FAX: +1-540-855-7041

WWW.GENUINBIOTECH.COM

Anti-Glycogen synthase kinase 3 beta Recombinant Rabbit Monoclonal Antibody

PAGE 3



Western blotting analysis using anti-glycogen synthase kinase 3 beta antibody (Cat#4019). Total cell lysates (30 µg) from various cell lines were loaded and separated by SDS-PAGE. The blot was incubated with anti-glycogen synthase kinase 3 beta antibody (Cat#4019, 1:5,000) and HRP-conjugated goat anti-rabbit secondary antibody (Cat#201, 1:20,000) respectively. Image was developed using NaQ™ ECL Substrate Kit (Cat#716).

SUPPORT

SUPPORT@GENUINBIOTECH.COM
TEL: +1-540-855-7041

ORDERS

SALES@GENUINBIOTECH.COM
FAX: +1-540-855-7041

WWW.GENUINBIOTECH.COM