

Anti-Topoisomerase II alpha Recombinant Rabbit Monoclonal Antibody



Catalog #: 4021

Aliases

TOP2A; DNA Topoisomerase II Alpha 2; TOP2alpha; TOPIIA; TOP2; Topoisomerase (DNA) II Alpha 170kDa; DNA Topoisomerase II, Alpha Isozyme; DNA Topoisomerase 2-Alpha; DNA Topoisomerase (ATP-Hydrolyzing); DNA Topoisomerase II, 170 KD; EC 5.99.1.3; DNA Gyrase; EC 5.6.2.2; TP2A

Background

Gene Name: TOP2A

NCBI Gene Entry: [7153](#)

UniProt Entry: [P11388](#)

Application Information

Molecular Weight: Predicted, 174 kDa; observed, 174 kDa

Clonality: Rabbit monoclonal antibody

Clone ID: 24GB9195

Species Reactivity: Human, mouse, rat

Applications Tested: Western blotting (WB), flow cytometry (FCM), immunocytochemistry (IC)

Immunogen

A synthesized peptide derived from human Topoisomerase II alpha

Isotype

Rabbit IgG

Storage Buffer

Supplied in PBS (pH 7.4) containing 50% glycerol, and 0.02% sodium azide.

Storage

Store at -20 °C for one year.

Recommended Dilutions

Western Blotting (WB): 1:1,000-1:5,000

Flow Cytometry (FCM): 1:2,000

Immunocytochemistry (IC): 1:100-1:1,000

SUPPORT

SUPPORT@GENUINBIOTECH.COM
TEL: +1-540-855-7041

ORDERS

SALES@GENUINBIOTECH.COM
FAX: +1-540-855-7041

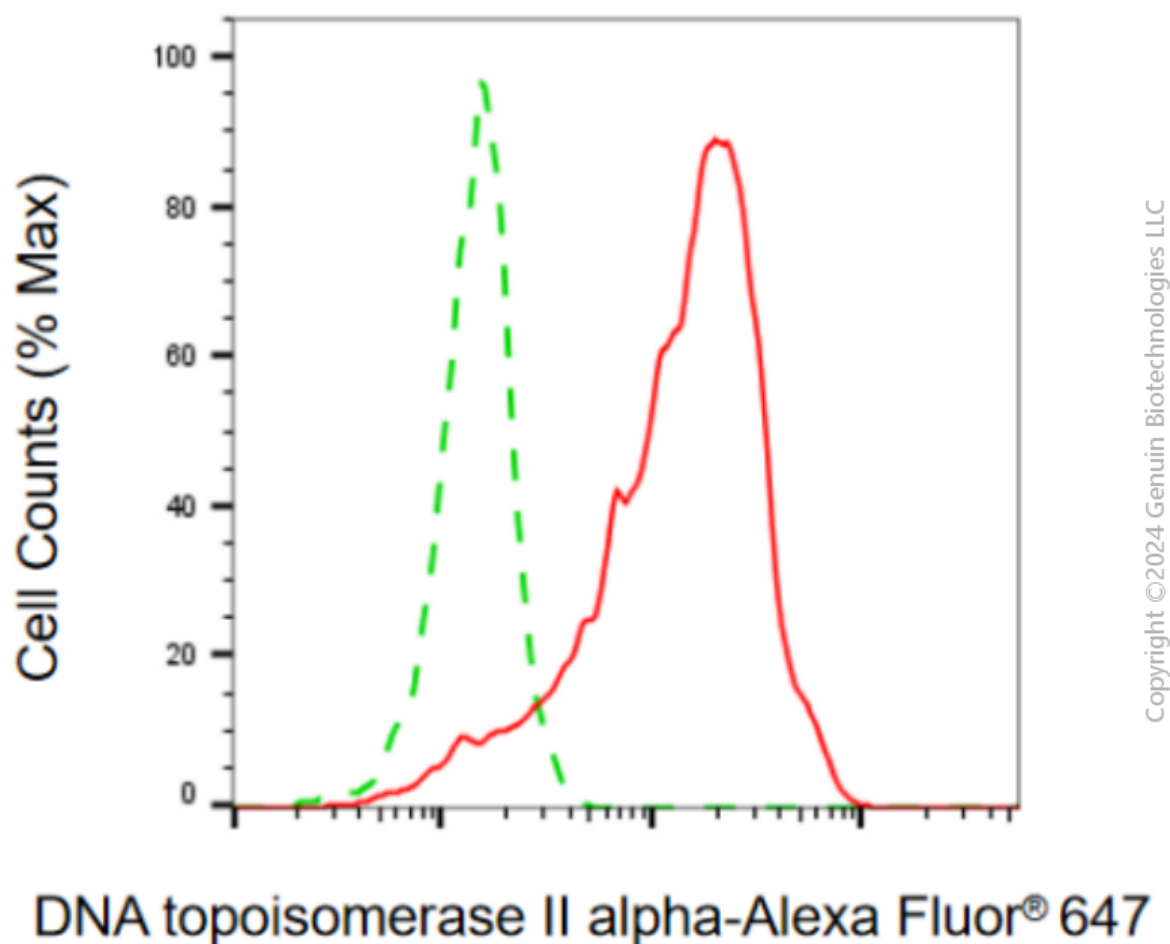
WWW.GENUINBIOTECH.COM

Anti-Topoisomerase II alpha Recombinant Rabbit Monoclonal Antibody

PAGE 2

Note: This product is for research use only.

Validation Data



Flow cytometric analysis of DNA topoisomerase II alpha expression in HepG2 cells using anti-DNA topoisomerase II alpha antibody (Cat#4021, 1:2,000). Green, isotype control; red, DNA topoisomerase II alpha.

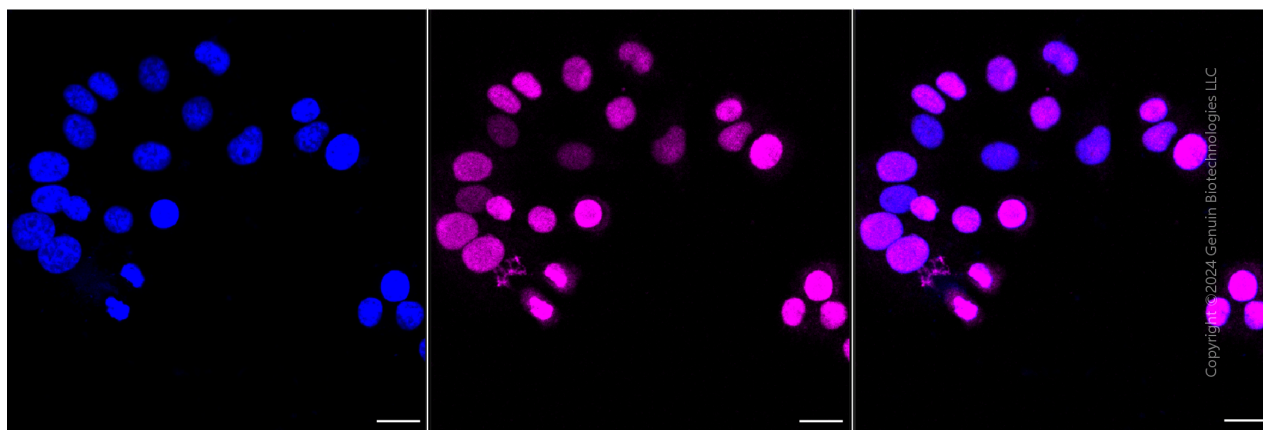
SUPPORT

SUPPORT@GENUINBIOTECH.COM
TEL: +1-540-855-7041

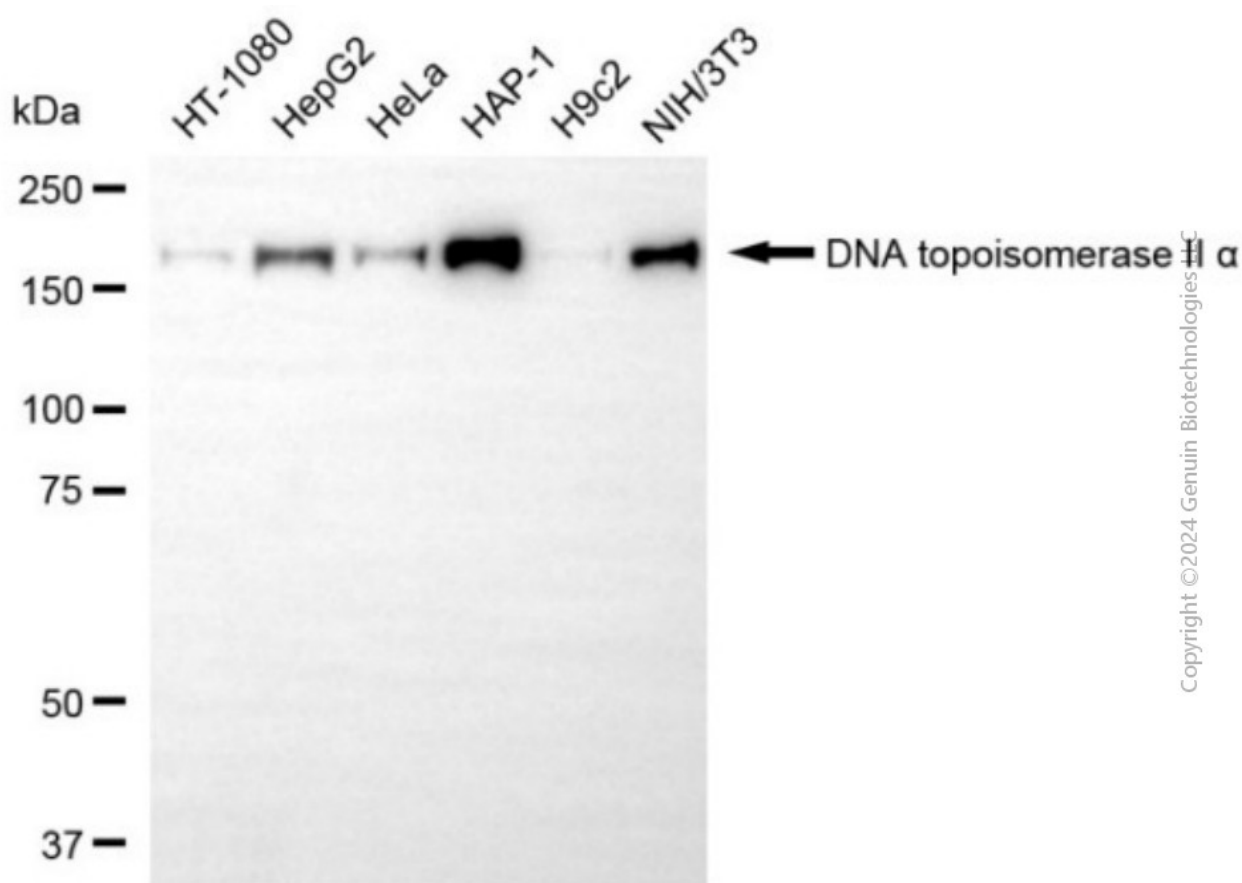
ORDERS

SALES@GENUINBIOTECH.COM
FAX: +1-540-855-7041

WWW.GENUINBIOTECH.COM



Immunocytochemical staining of HepG2 cells with anti-DNA topoisomerase II alpha antibody (Cat#4021, 1:1,000). Nuclei were stained blue with DAPI; DNA topoisomerase II alpha was stained magenta with Alexa Fluor® 647. Images were taken using Leica stellaris 5. Protein abundance based on laser Intensity and smart gain: Medium. Scale bar, 20 μ m.



Western blotting analysis using anti-DNA topoisomerase II alpha antibody (Cat#4021). Total cell lysates (30 μ g) from various cell lines were loaded and separated by SDS-PAGE. The blot was incubated with anti-DNA topoisomerase II alpha antibody (Cat#4021, 1:5,000) and HRP-conjugated goat anti-rabbit secondary antibody (Cat#201, 1:20,000) respectively. Image was

SUPPORT

SUPPORT@GENUINBIOTECH.COM
TEL: +1-540-855-7041

ORDERS

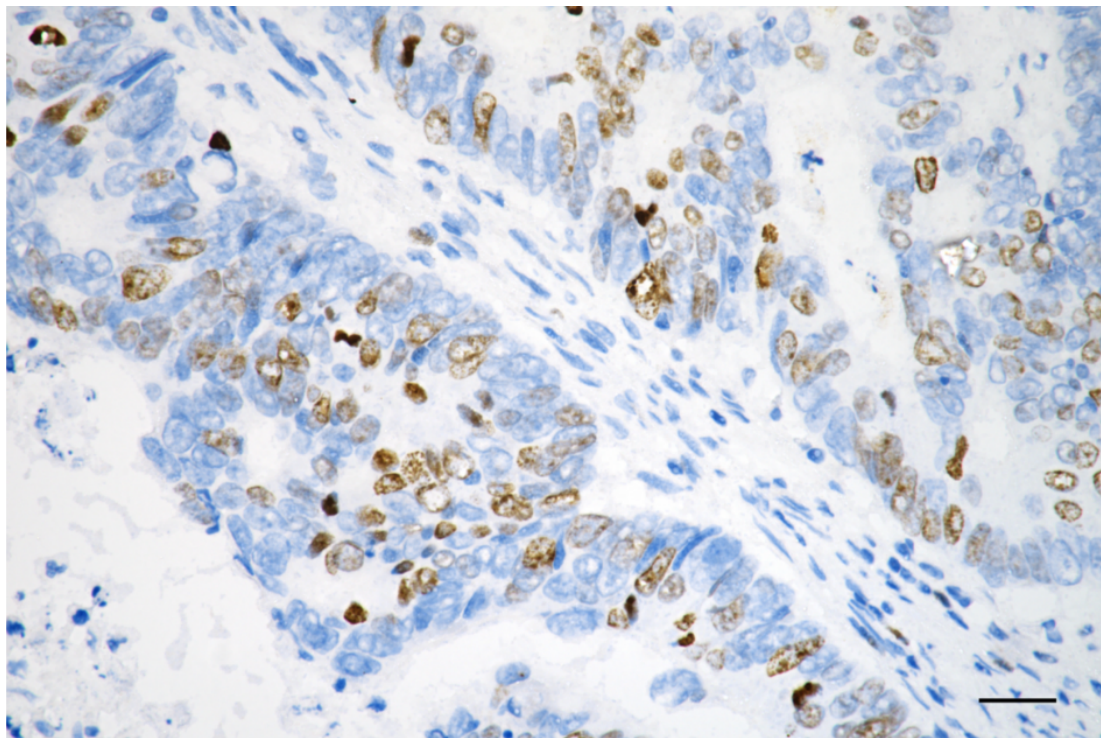
SALES@GENUINBIOTECH.COM
FAX: +1-540-855-7041

WWW.GENUINBIOTECH.COM

Anti-Topoisomerase II alpha Recombinant Rabbit Monoclonal Antibody

PAGE 4

developed using NaQ™ ECL Substrate Kit (Cat#716).



Immunohistochemistry was performed on paraffin-embedded human sigmoid colon carcinoma using anti-DNA topoisomerase II alpha antibody (Cat#4021, 1:200). Antigen retrieval was done in sodium citrate buffer (pH 6.0). DAB was used for detection, with hematoxylin counterstaining. Images were acquired using a Nikon Ci-L Plus microscope (40× objective). Scale bar: 25 µm.

SUPPORT

SUPPORT@GENUINBIOTECH.COM
TEL: +1-540-855-7041

ORDERS

SALES@GENUINBIOTECH.COM
FAX: +1-540-855-7041

WWW.GENUINBIOTECH.COM