

Anti-Smad4 Recombinant Rabbit Monoclonal Antibody



Catalog #: 4024

Aliases

DPC4; MADH4; Mothers Against Decapentaplegic Homolog 4; Deletion Target In Pancreatic Carcinoma 4; MAD Homolog 4; MAD, Mothers Against Decapentaplegic Homolog 4 (Drosophila); Mothers Against Decapentaplegic, Drosophila, Homolog Of, 4; SMAD, Mothers Against DPP Homolog 4 (Drosophila); Deleted In Pancreatic Carcinoma Locus 4; SMAD, Mothers Against DPP Homolog 4; Mothers Against DPP Homolog 4; SMAD 4; HSMAD4; MYHRS; Smad4; JIP

Background

Gene Name: SMAD4

NCBI Gene Entry: [4089](#)

UniProt Entry: [Q13485](#)

Application Information

Molecular Weight: Predicted, 60 kDa; observed, 65 kDa

Clonality: Rabbit monoclonal antibody

Clone ID: 24GB9210

Species Reactivity: Human, mouse, rat

Applications Tested: Western blotting (WB), flow cytometry (FCM), immunocytochemistry (IC)

Immunogen

A synthesized peptide derived from human Smad4

Isotype

Rabbit IgG

Storage Buffer

Supplied in PBS (pH 7.4) containing 50% glycerol, and 0.02% sodium azide.

Storage

Store at -20 °C for one year.

Recommended Dilutions

Western Blotting (WB): 1:1,000-1:5,000

Flow Cytometry (FCM): 1:2,000

Immunocytochemistry (IC): 1:100-1:1,000

SUPPORT

SUPPORT@GENUINBIOTECH.COM
TEL: +1-540-855-7041

ORDERS

SALES@GENUINBIOTECH.COM
FAX: +1-540-855-7041

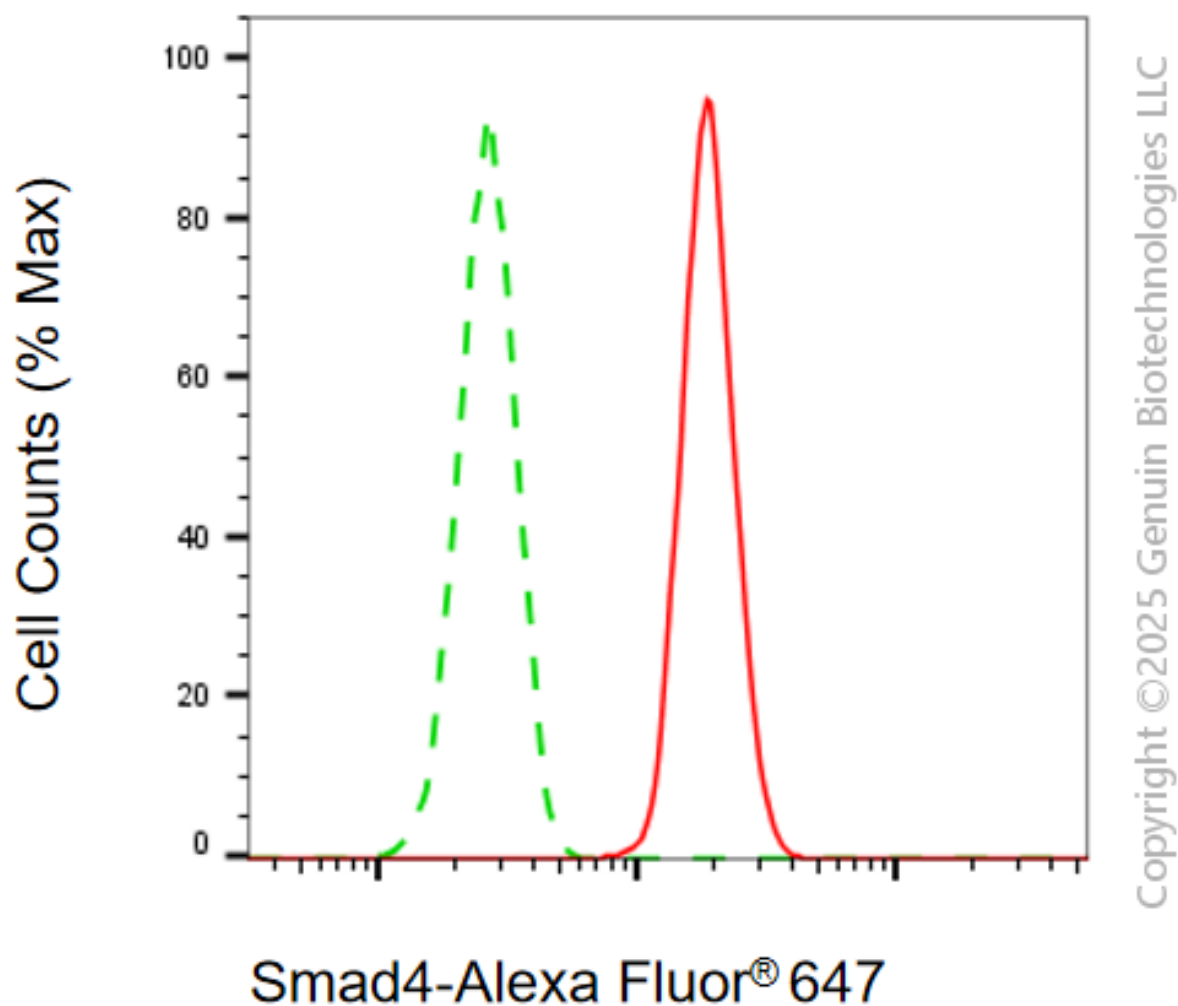
WWW.GENUINBIOTECH.COM

Anti-Smad4 Recombinant Rabbit Monoclonal Antibody

PAGE 2

Note: This product is for research use only.

Validation Data



Flow cytometric analysis of Smad4 expression in C2C12 cells using anti-Smad4 antibody (Cat#4024, 1:2,000). Green, isotype control; red, Smad4.

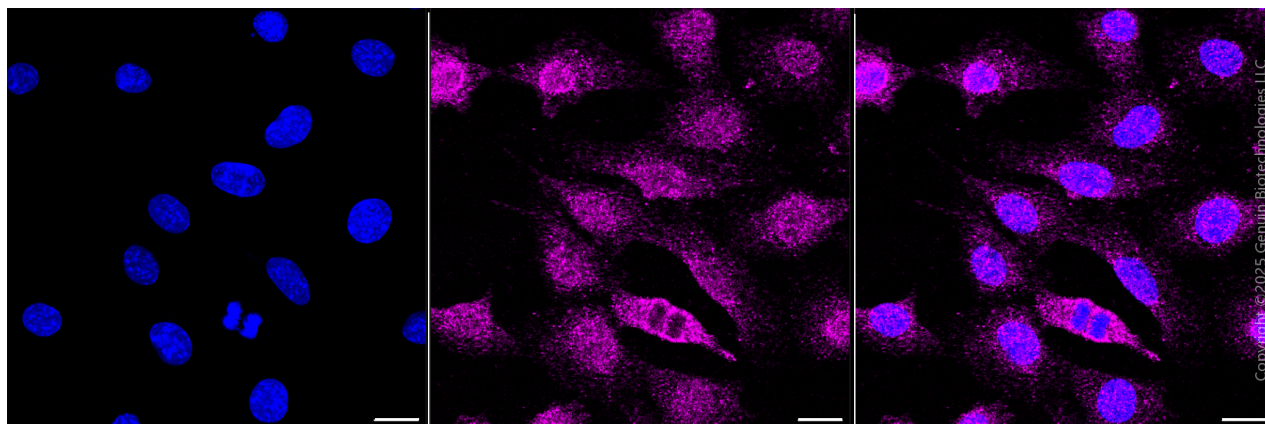
SUPPORT

SUPPORT@GENUINBIOTECH.COM
TEL: +1-540-855-7041

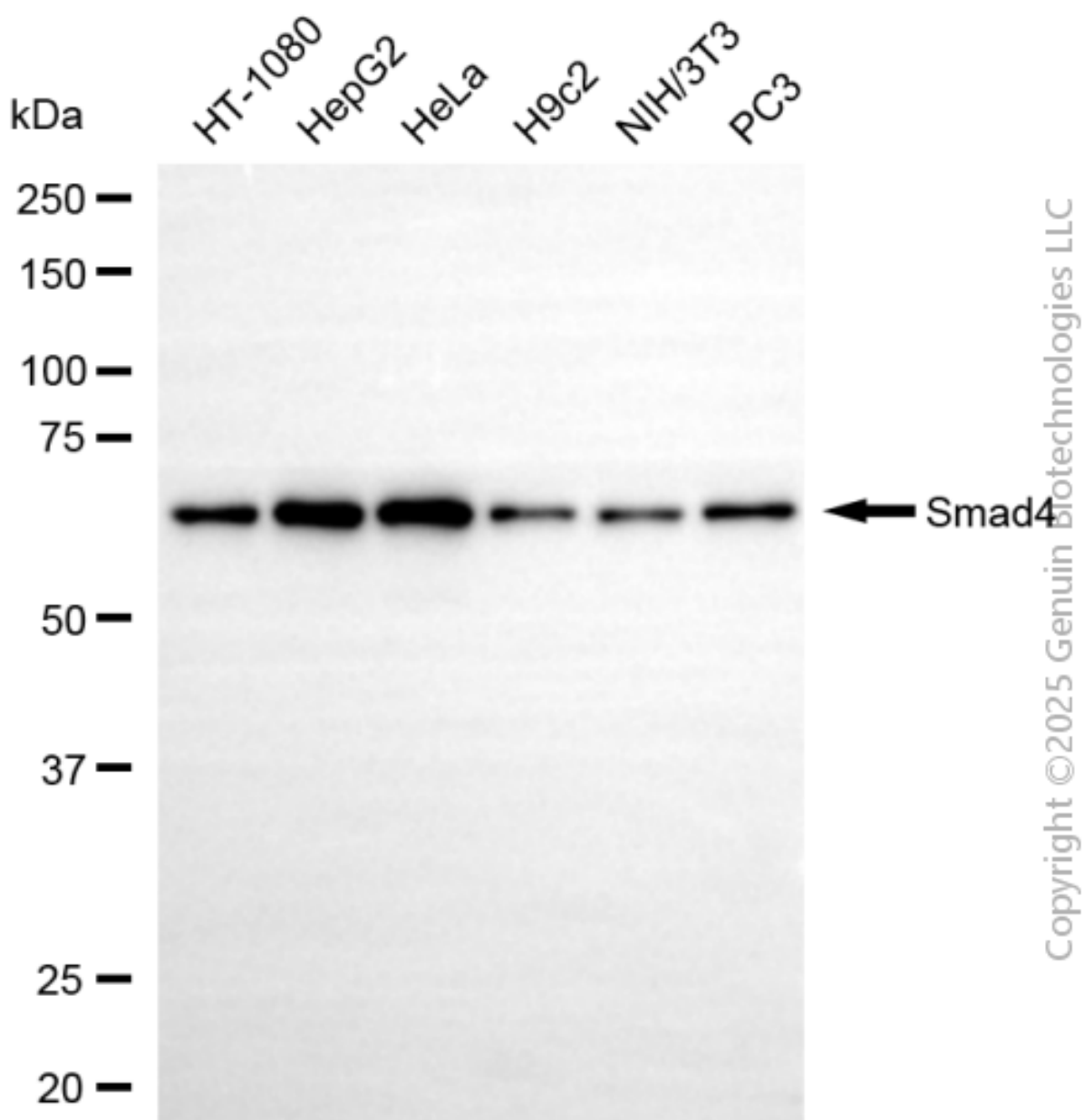
ORDERS

SALES@GENUINBIOTECH.COM
FAX: +1-540-855-7041

WWW.GENUINBIOTECH.COM



Immunocytochemical staining of HepG2 cells with anti-Cyclin dependent kinase 16 antibody (Cat#4024, 1:1,000). Nuclei were stained blue with DAPI; Cyclin dependent kinase 16 was stained magenta with Alexa Fluor® 647. Images were taken using Leica stellaris 5. Protein abundance based on laser Intensity and smart gain: Medium. Scale bar, 20 μ m.



Western blotting analysis using anti-smad4 antibody (Cat#4024). Total cell lysates (30 μ g) from various cell lines were loaded and separated by SDS-PAGE. The blot was incubated with anti-smad4 antibody (Cat#4024, 1:5,000) and HRP-conjugated goat anti-rabbit secondary antibody (Cat#201, 1:20,000) respectively. Image was developed using NaQ™ ECL Substrate Kit (Cat#716).