

# Anti-Mitogen-Activated Protein Kinase 1 Recombinant Rabbit Monoclonal Antibody



**Catalog #: 4034**

## Aliases

MAPK1; Mitogen-Activated Protein Kinase 1; ERK2; Extracellular Signal-Regulated Kinase 2; P41mapk; MAPK2; PRKM1; PRKM2; ERK; Mitogen-Activated Protein Kinase 2; MAP Kinase 1; MAP Kinase 2; EC 2.7.11.24; P42-MAPK; MAPK 2; ERK-2; ERT1; Protein Tyrosine Kinase ERK2; MAP Kinase Isoform P42; EC 2.7.11; P42MAPK; MAPK 1; NS13; P38; P40; P41

## Background

Gene Name: MAPK1

NCBI Gene Entry: [5594](#)

UniProt Entry: [P28482](#)

## Application Information

Molecular Weight: Predicted, 41 kDa; observed, 41 kDa

Clonality: Rabbit monoclonal antibody

Clone ID: 24GB9260

Species Reactivity: Human, mouse, rat

Applications Tested: Western blotting (WB), flow cytometry (FCM)

## Immunogen

A synthesized peptide derived from human ERK2

## Isotype

Rabbit IgG

## Storage Buffer

Supplied in PBS (pH 7.4) containing 50% glycerol, and 0.02% sodium azide.

## Storage

Store at -20 °C for one year.

## Recommended Dilutions

Western Blotting (WB): 1:1,000-1:5,000

Flow Cytometry (FCM): 1:2,000

**Note:** This product is for research use only.

---

### SUPPORT

SUPPORT@GENUINBIOTECH.COM  
TEL: +1-540-855-7041

### ORDERS

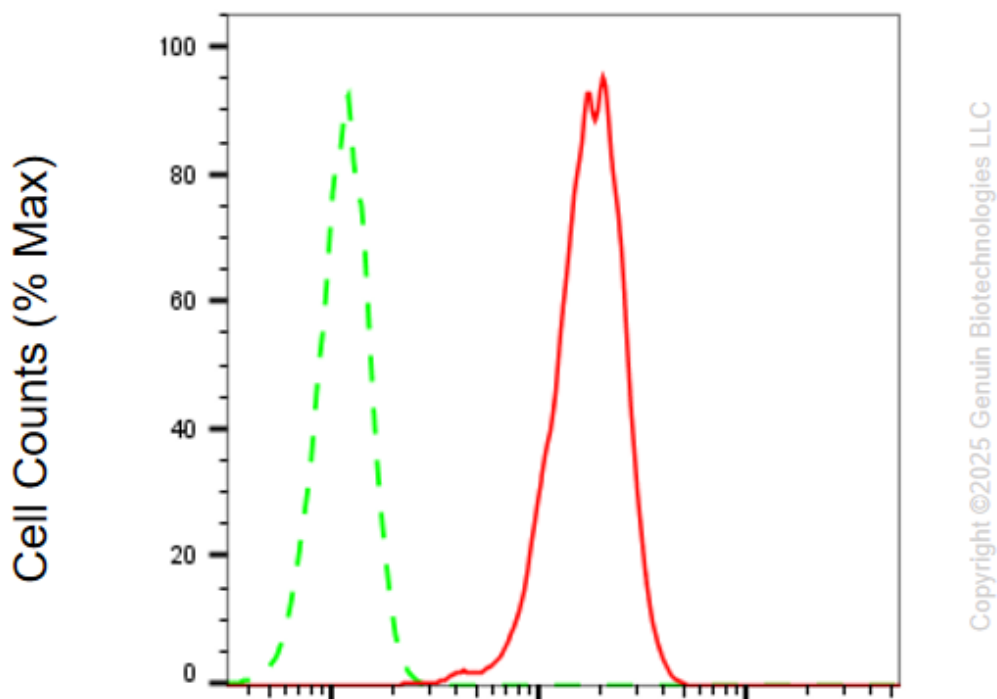
SALES@GENUINBIOTECH.COM  
FAX: +1-540-855-7041

[WWW.GENUINBIOTECH.COM](http://WWW.GENUINBIOTECH.COM)

# Anti-Mitogen-Activated Protein Kinase 1 Recombinant Rabbit Monoclonal Antibody

PAGE 2

## Validation Data



### Mitogen-activated protein kinase 1-Alexa Fluor® 647

Flow cytometric analysis of Mitogen-activated protein kinase 1 expression in C2C12 cells using anti-Mitogen-activated protein kinase 1 antibody (Cat#4034, 1:2,000). Green, isotype control; red, Mitogen-activated protein kinase 1.

#### SUPPORT

SUPPORT@GENUINBIOTECH.COM  
TEL: +1-540-855-7041

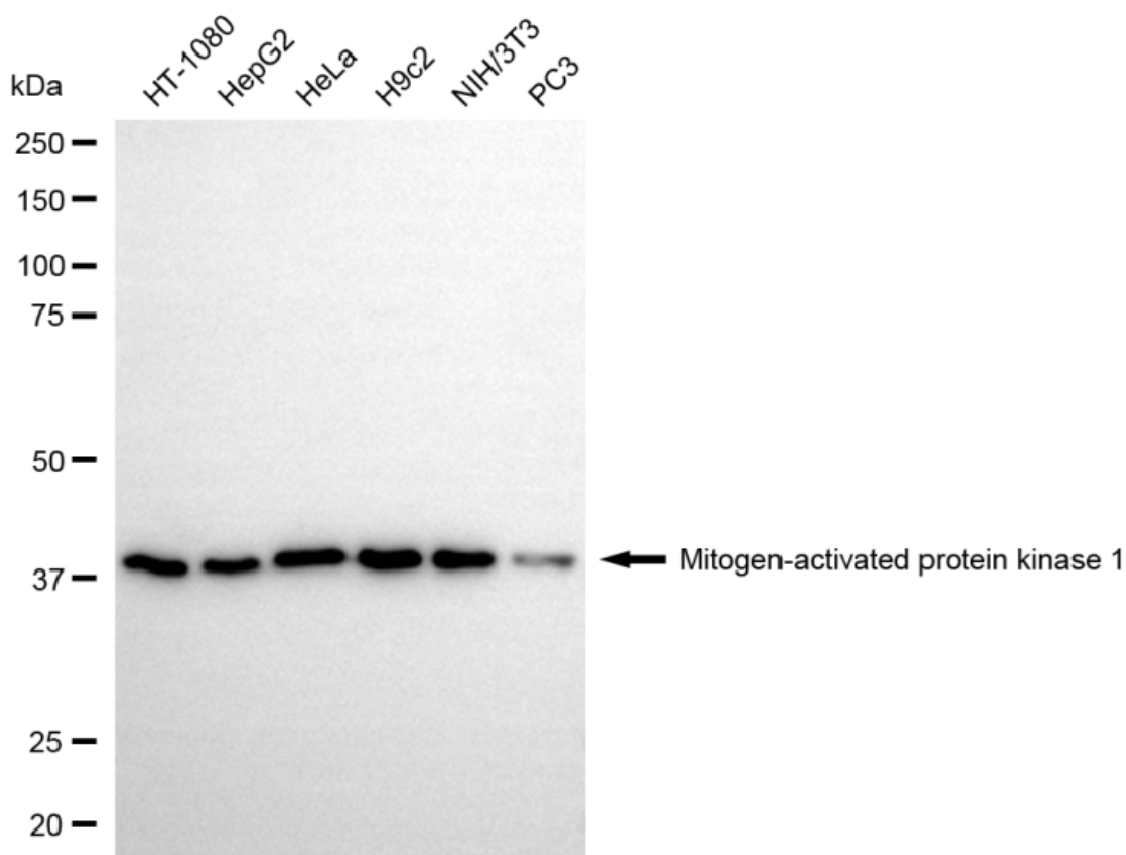
#### ORDERS

SALES@GENUINBIOTECH.COM  
FAX: +1-540-855-7041

[WWW.GENUINBIOTECH.COM](http://WWW.GENUINBIOTECH.COM)

## Anti-Mitogen-Activated Protein Kinase 1 Recombinant Rabbit Monoclonal Antibody

PAGE 3



Copyright ©2025 Genuin Biotechnologies LLC

Western blotting analysis using anti-mitogen-activated protein kinase 1 antibody (Cat#4034). Total cell lysates (30  $\mu$ g) from various cell lines were loaded and separated by SDS-PAGE. The blot was incubated with anti-mitogen-activated protein kinase 1 antibody (Cat#4034, 1:5,000) and HRP-conjugated goat anti-rabbit secondary antibody (Cat#201, 1:20,000) respectively. Image was developed using NaQ<sup>TM</sup> ECL Substrate Kit (Cat#716).

### SUPPORT

SUPPORT@GENUINBIOTECH.COM  
TEL: +1-540-855-7041

### ORDERS

SALES@GENUINBIOTECH.COM  
FAX: +1-540-855-7041

[WWW.GENUINBIOTECH.COM](http://WWW.GENUINBIOTECH.COM)