

Anti-Sonic Hedgehog Signaling Molecule Recombinant Rabbit Monoclonal Antibody



Catalog #: 4040

Aliases

SHH; Sonic Hedgehog Signaling Molecule; MCOPCB5; SMMCI; TPTPS; HHG1; TPT; Shh Unprocessed N-Terminal Signaling And C-Terminal Autoprocessing Domains; Sonic Hedgehog Protein; ShhNC; HLP3; HPE3; Sonic Hedgehog (Drosophila) Homolog; Sonic Hedgehog Homolog; EC 3.1.-.-; HHG-1

Background

Gene Name: SHH

NCBI Gene Entry: [6469](#)

UniProt Entry: [Q15465](#)

Application Information

Molecular Weight: Predicted, 50 kDa; observed, 51 kDa

Clonality: Rabbit monoclonal antibody

Clone ID: 24GB9290

Species Reactivity: Human

Applications Tested: Western blotting (WB), flow cytometry (FCM), immunocytochemistry (IC)

Immunogen

A synthesized peptide derived from human Sonic Hedgehog

Isotype

Rabbit IgG

Storage Buffer

Supplied in PBS (pH 7.4) containing 50% glycerol, and 0.02% sodium azide.

Storage

Store at -20 °C for one year.

Recommended Dilutions

Western Blotting (WB): 1:1,000-1:5,000

Flow Cytometry (FCM): 1:2,000

Immunocytochemistry (IC): 1:100-1:1,000

SUPPORT

SUPPORT@GENUINBIOTECH.COM
TEL: +1-540-855-7041

ORDERS

SALES@GENUINBIOTECH.COM
FAX: +1-540-855-7041

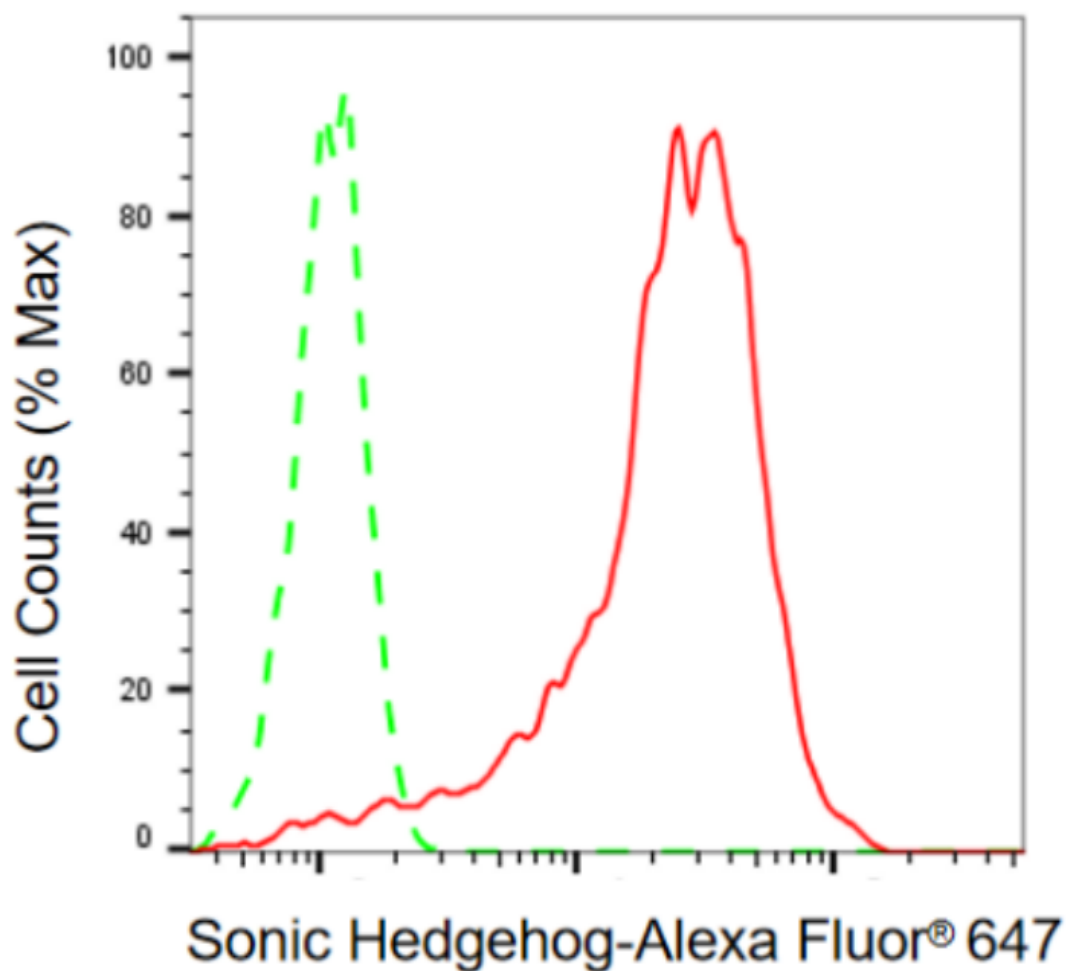
WWW.GENUINBIOTECH.COM

Anti-Sonic Hedgehog Signaling Molecule Recombinant Rabbit Monoclonal Antibody

PAGE 2

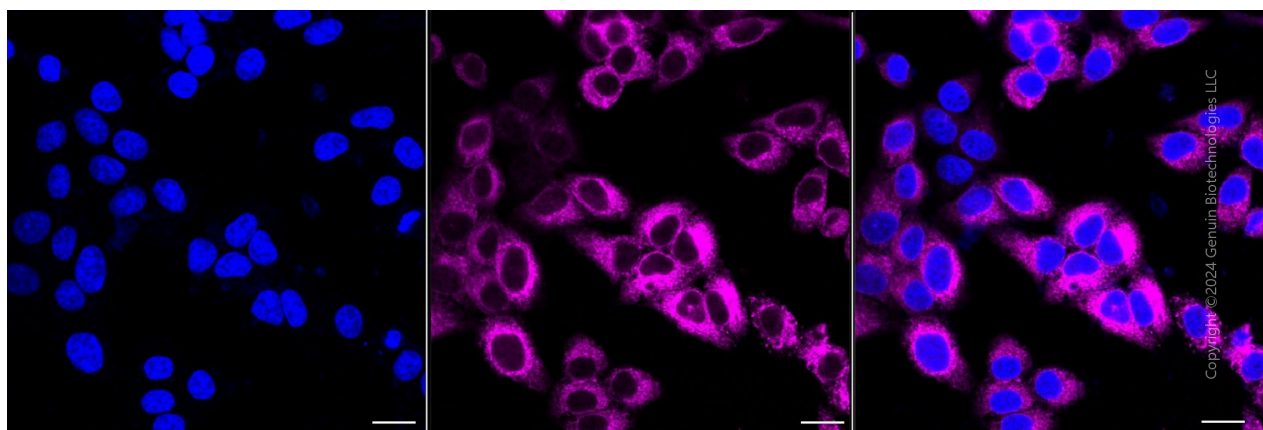
Note: This product is for research use only.

Validation Data



Copyright ©2024 Genuin Biotechnologies LLC

Flow cytometric analysis of sonic hedgehog expression in HepG2 cells using anti-sonic hedgehog antibody (Cat#4040, 1:2,000). Green, isotype control; red, sonic hedgehog.



Copyright ©2024 Genuin Biotechnologies LLC

SUPPORT

SUPPORT@GENUINBIOTECH.COM
TEL: +1-540-855-7041

ORDERS

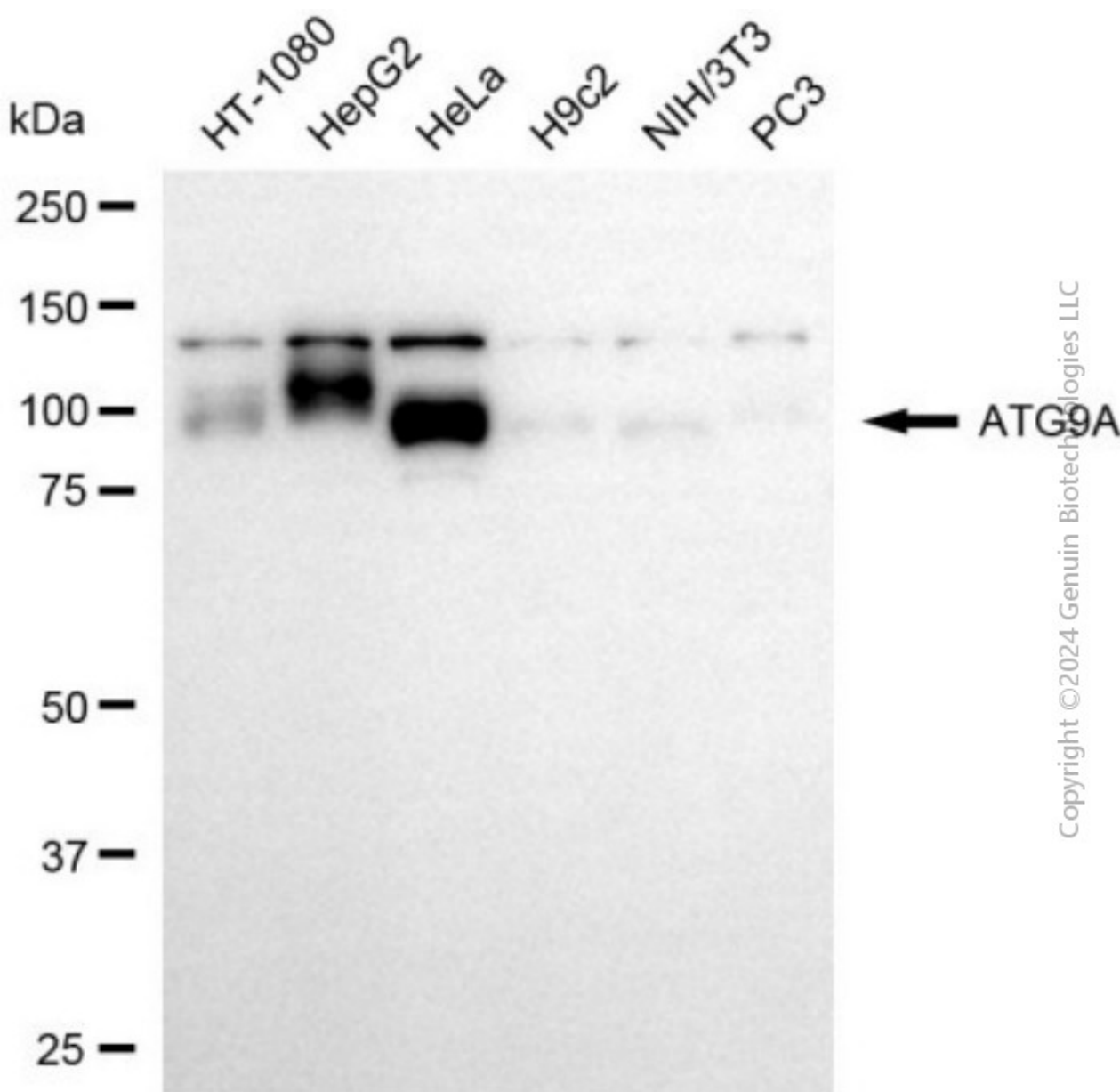
SALES@GENUINBIOTECH.COM
FAX: +1-540-855-7041

WWW.GENUINBIOTECH.COM

Anti-Sonic Hedgehog Signaling Molecule Recombinant Rabbit Monoclonal Antibody

PAGE 3

Immunocytochemical staining of HepG2 cells with anti-Sonic Hedgehog antibody (Cat#4040, 1:1,000). Nuclei were stained blue with DAPI; Sonic Hedgehog was stained magenta with Alexa Fluor® 647. Images were taken using Leica stellaris 5. Protein abundance based on laser Intensity and smart gain: Medium. Scale bar, 20 μ m.



Western blotting analysis using anti-sonic Hedgehog antibody (Cat#4040). Total cell lysates (30 μ g) from various cell lines were loaded and separated by SDS-PAGE. The blot was incubated with anti-sonic Hedgehog antibody (Cat#4040, 1:5,000) and HRP-conjugated goat anti-rabbit secondary antibody (Cat#201, 1:20,000) respectively. Image was developed using NaQ™ ECL Substrate Kit (Cat#716).

SUPPORT

SUPPORT@GENUINBIOTECH.COM
TEL: +1-540-855-7041

ORDERS

SALES@GENUINBIOTECH.COM
FAX: +1-540-855-7041

WWW.GENUINBIOTECH.COM