

Anti-Pancreatic And Duodenal Homeobox 1 Recombinant Rabbit Monoclonal Antibody



Catalog #: 4045

Aliases

PDX1; Pancreatic And Duodenal Homeobox 1; IDX-1; STF-1; PDX-1; IUF-1; GSF; Islet/Duodenum Homeobox-1; Insulin Upstream Factor 1; Glucose-Sensitive Factor; MODY4; IPF1; Insulin Promoter Factor 1, Homeodomain Transcription Factor; Somatostatin-Transactivating Factor 1; Pancreas/Duodenum Homeobox Protein 1; Somatostatin Transcription Factor 1; Pancreatic-Duodenal Homeobox Factor 1; Insulin Promoter Factor 1; PAGEN1; IUF1; STF1

Background

Gene Name: PDX1

NCBI Gene Entry: [3651](#)

UniProt Entry: [P52945](#)

Application Information

Molecular Weight: Predicted, 31 kDa; observed, 42 kDa

Clonality: Rabbit monoclonal antibody

Clone ID: 24GB9315

Species Reactivity: Human, rat

Applications Tested: Western blotting (WB), flow cytometry (FCM), immunocytochemistry (IC)

Immunogen

A synthesized peptide derived from human PDX1

Isotype

Rabbit IgG

Storage Buffer

Supplied in PBS (pH 7.4) containing 50% glycerol, and 0.02% sodium azide.

Storage

Store at -20 °C for one year.

Recommended Dilutions

Western blotting (WB): 1:1,000-1:5,000

Flow Cytometry (FCM): 1:2,000

Immunocytochemistry (IC): 1:100-1:1,000

SUPPORT

SUPPORT@GENUINBIOTECH.COM
TEL: +1-540-855-7041

ORDERS

SALES@GENUINBIOTECH.COM
FAX: +1-540-855-7041

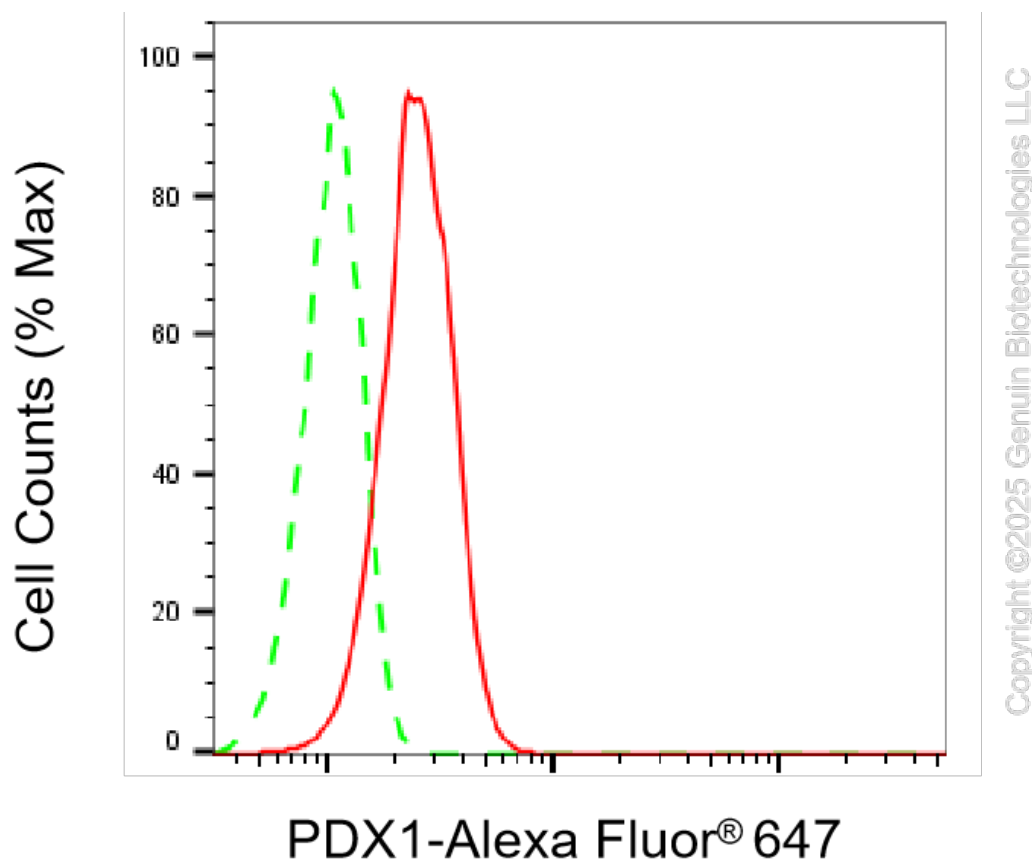
WWW.GENUINBIOTECH.COM

Anti-Pancreatic And Duodenal Homeobox 1 Recombinant Rabbit Monoclonal Antibody

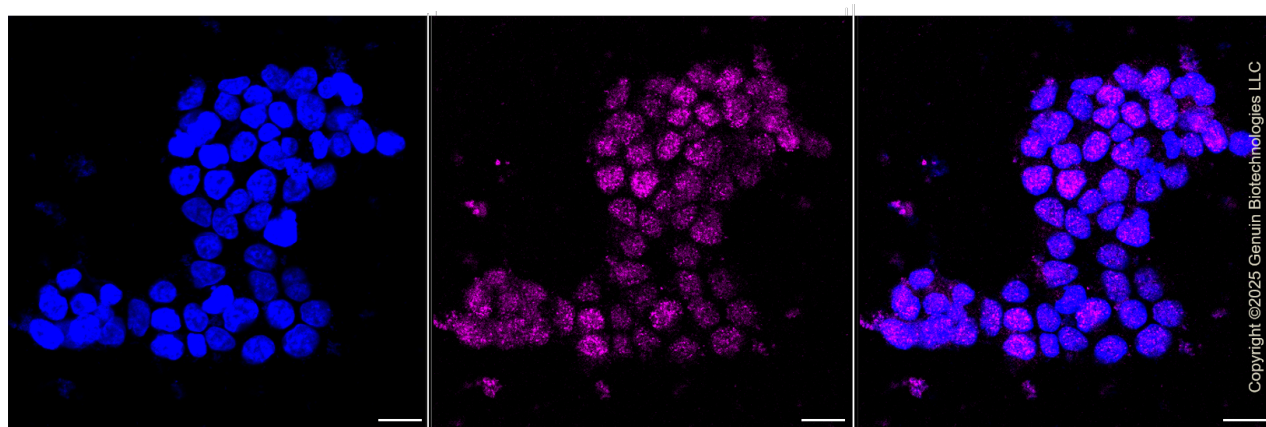
PAGE 2

Note: This product is for research use only.

Validation Data



Flow cytometric analysis of PDX1 expression in HeLa cells using anti-PDX1 antibody (Cat#4045, 1:2,000). Green, isotype control; red, PDX1.



Immunocytochemical staining of HeLa cells with anti-PDX1 antibody (Cat#4045, 1:1,000). Nuclei were stained blue with DAPI; PDX1 was stained magenta with Alexa Fluor® 647. Images were taken using Leica stellaris 5. Protein abundance based on laser Intensity and smart gain: Low.

SUPPORT

SUPPORT@GENUINBIOTECH.COM
TEL: +1-540-855-7041

ORDERS

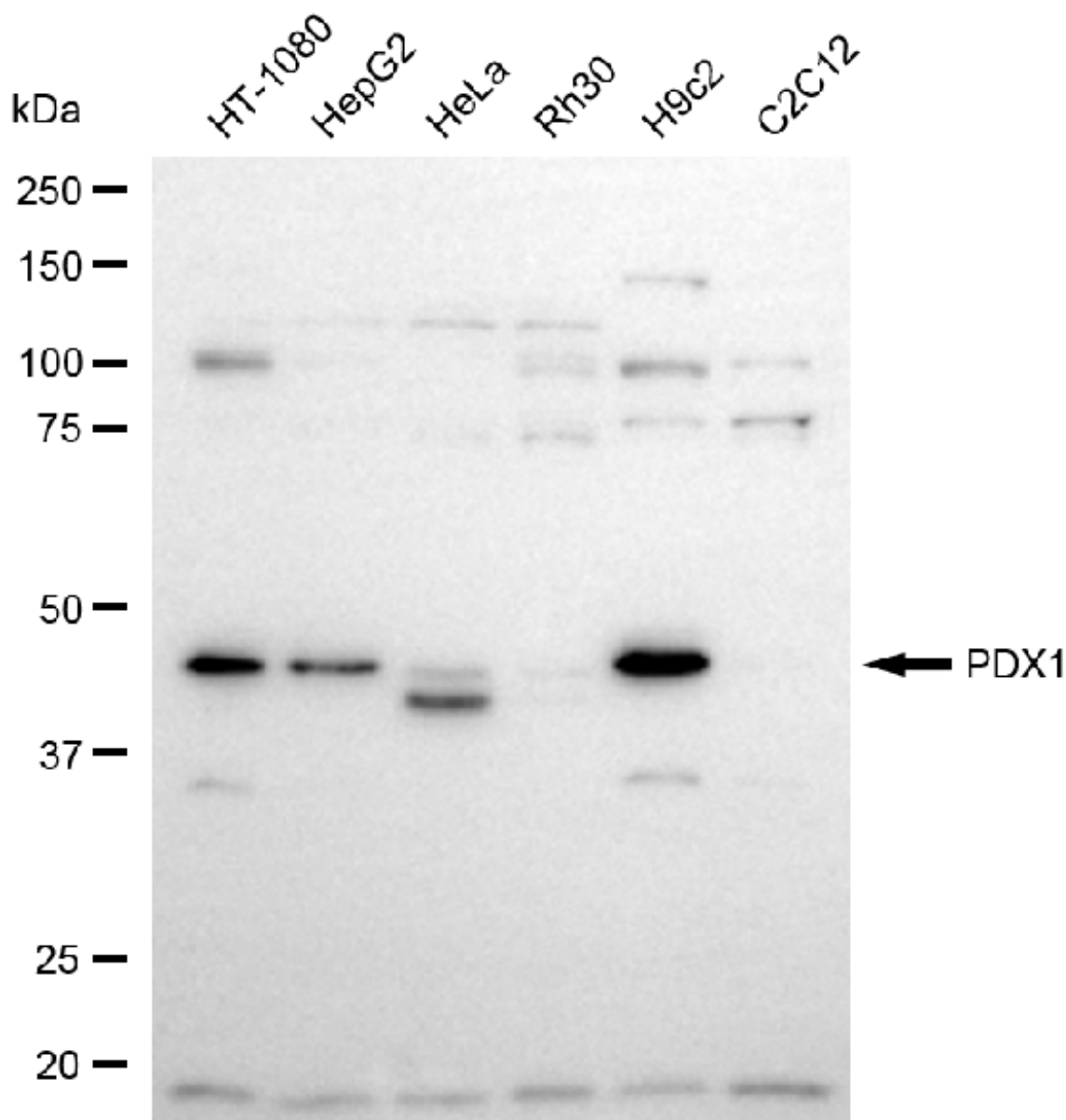
SALES@GENUINBIOTECH.COM
FAX: +1-540-855-7041

WWW.GENUINBIOTECH.COM

Anti-Pancreatic And Duodenal Homeobox 1 Recombinant Rabbit Monoclonal Antibody

PAGE 3

Scale bar, 20 μ m.



Copyright ©2025 Genuin Biotechnologies LLC

Western blotting analysis using anti-PDX1 antibody (Cat#4045). Total cell lysates (30 μ g) from various cell lines were loaded and separated by SDS-PAGE. The blot was incubated with anti-PDX1 antibody (Cat#4045, 1:5,000) and HRP-conjugated goat anti-rabbit secondary antibody (Cat#201, 1:20,000) respectively. Image was developed using FeQ™ ECL Substrate Kit (Cat#226).

SUPPORT

SUPPORT@GENUINBIOTECH.COM
TEL: +1-540-855-7041

ORDERS

SALES@GENUINBIOTECH.COM
FAX: +1-540-855-7041

WWW.GENUINBIOTECH.COM