

# Anti-CD44 Recombinant Rabbit Monoclonal Antibody



**Catalog #: 4048**

## Aliases

CD44 Molecule (Indian Blood Group); HUTCH-I; HCELL; CSPG8; MC56; Pgp1; MDU2; MDU3; MIC4; IN; Hematopoietic Cell E- And L-Selectin Ligand; GP90 Lymphocyte Homing/ Adhesion Receptor; Chondroitin Sulfate Proteoglycan 8; Extracellular Matrix Receptor III; Homing Cell Adhesion Molecule; Heparan Sulfate Proteoglycan; Phagocytic Glycoprotein 1; Phagocyte Glycoprotein 1; Hyaluronate Receptor; In(Lu) Related-P80; Hermes Antigen; CD44 Antigen; Hermes-1; ECMR-III; HUTCH-1; ECM-III; Epican; PGP-1; CD44R; CDw44; H-CAM; LHR; CD44 Antigen (Homing Function And Indian Blood Group System); Homing Function And Indian Blood Group System; Extracellular Matrix Receptor-III; Cell Surface Glycoprotein CD44; Indian Blood Group Antigen; Phagocytic Glycoprotein I; Soluble CD44; CDW44; PGP-I

## Background

Gene Name: CD44

NCBI Gene Entry: [960](#)

UniProt Entry: [P16070](#)

## Application Information

Molecular Weight: Predicted, 82 kDa; observed, 81 kDa

Clonality: Rabbit monoclonal antibody

Clone ID: 24GB9330

Species Reactivity: Human, rat

Applications Tested: Western blotting (WB), flow cytometry (FCM), immunocytochemistry (IC)

## Immunogen

A synthesized peptide derived from human CD44

## Isotype

Rabbit IgG

## Storage Buffer

Supplied in PBS (pH 7.4) containing 50% glycerol, and 0.02% sodium azide.

## Storage

Store at -20 °C for one year.

## Recommended Dilutions

---

### SUPPORT

SUPPORT@GENUINBIOTECH.COM  
TEL: +1-540-855-7041

### ORDERS

SALES@GENUINBIOTECH.COM  
FAX: +1-540-855-7041

[WWW.GENUINBIOTECH.COM](http://WWW.GENUINBIOTECH.COM)

## Anti-CD44 Recombinant Rabbit Monoclonal Antibody

PAGE 2

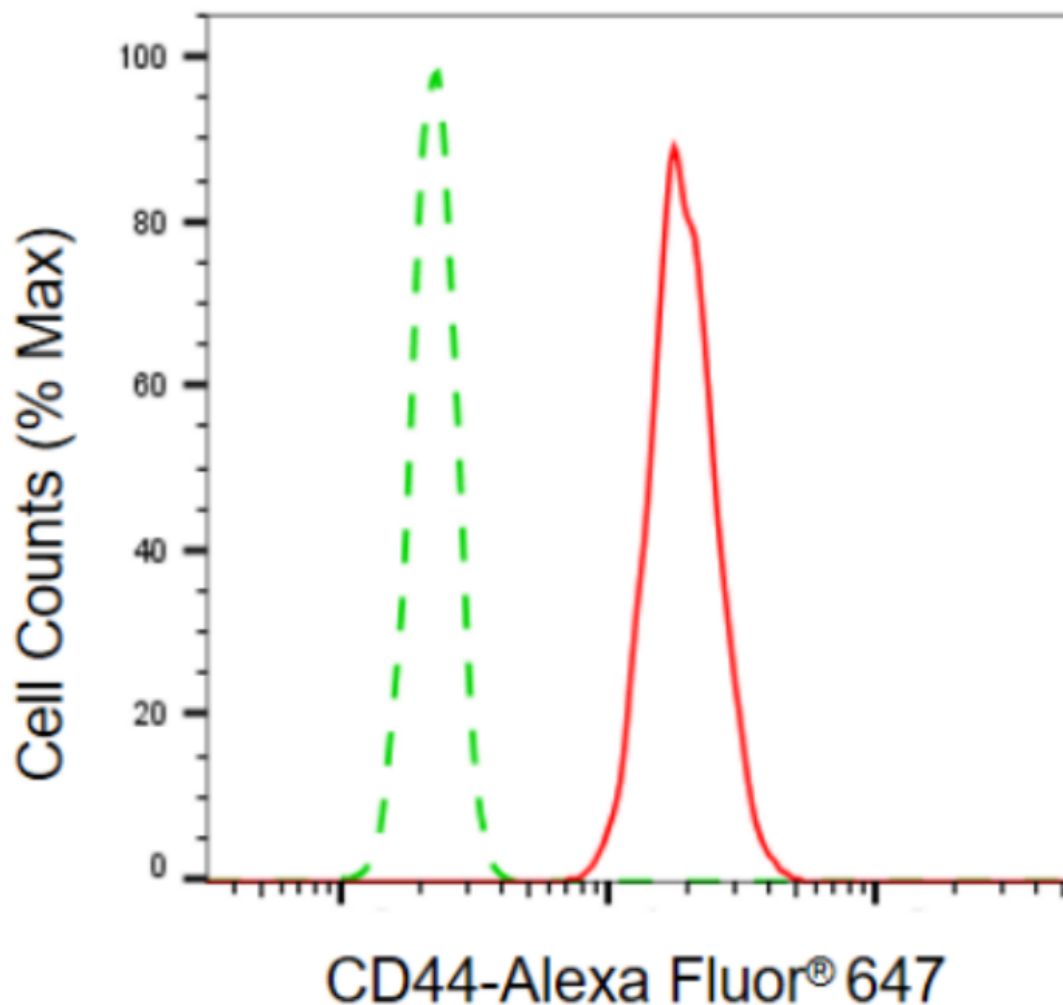
Western Blotting (WB): 1:1,000-1:5,000

Flow Cytometry (FCM): 1:2,000

Immunocytochemistry (IC): 1:100-1:1,000

**Note:** This product is for research use only.

### Validation Data



Copyright ©2024 Genuin Biotechnologies LLC

Flow cytometric analysis of CD44 expression in HT-1080 cells using anti-CD44 antibody (Cat#4048, 1:2,000). Green, isotype control; red, CD44.

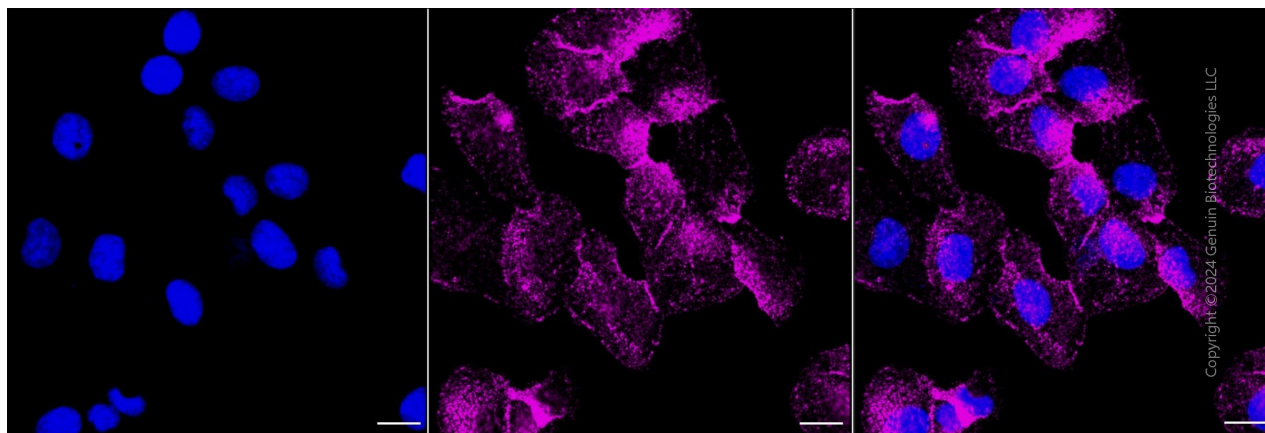
#### SUPPORT

SUPPORT@GENUINBIOTECH.COM  
TEL: +1-540-855-7041

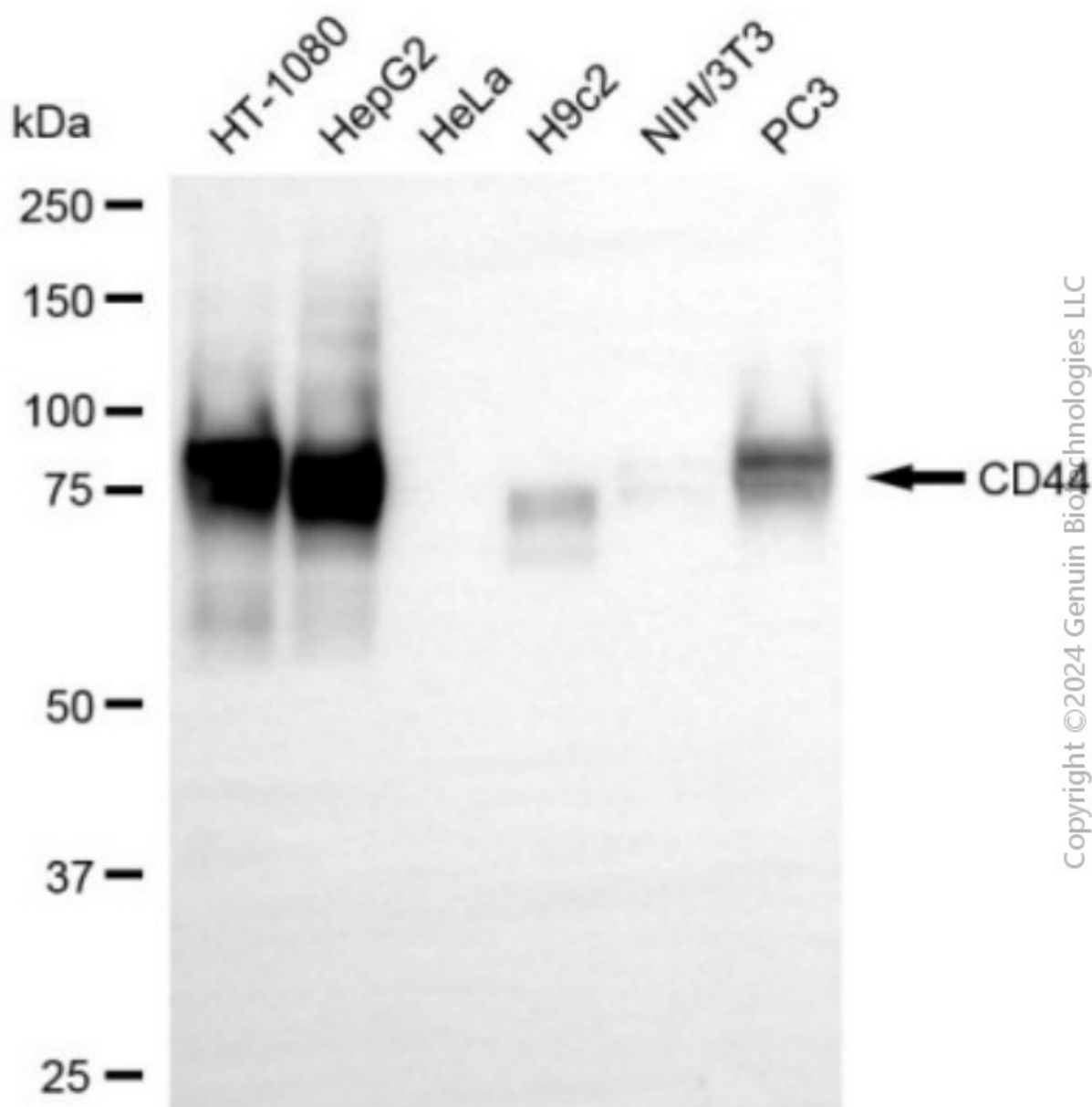
#### ORDERS

SALES@GENUINBIOTECH.COM  
FAX: +1-540-855-7041

[WWW.GENUINBIOTECH.COM](http://WWW.GENUINBIOTECH.COM)



Immunocytochemical staining of HT-1080 cells with anti-CD44 antibody (Cat#4048, 1:1,000) . Nuclei were stained blue with DAPI; CD44 was stained magenta with Alexa Fluor® 647. Images were taken using Leica stellaris 5. Protein abundance based on laser Intensity and smart gain: Low. Scale bar, 20  $\mu$ m.



Western blotting analysis using anti-CD44 antibody (Cat#4048). Total cell lysates (30  $\mu$ g) from various cell lines were loaded and separated by SDS-PAGE. The blot was incubated with anti-CD44 antibody (Cat#4048, 1:5,000) and HRP-conjugated goat anti-rabbit secondary antibody (Cat#201, 1:20,000) respectively. Image was developed using NaQ™ ECL Substrate Kit (Cat#716).