

Anti-Golgin A2 Recombinant Rabbit Monoclonal Antibody



Catalog #: 4054

Aliases

GOLGA2; Golgin A2; GM130; Golgin-95; Golgi Autoantigen, Golgin Subfamily A, 2; 130 KDa Cis-Golgi Matrix Protein; Golgin Subfamily A Member 2; Golgi Matrix Protein GM130; GM130 Autoantigen; SY11 Protein; GOLGIN-95; DEDHMB

Background

Gene Name: GOLGA2

NCBI Gene Entry: [2801](#)

UniProt Entry: [Q08379](#)

Application Information

Molecular Weight: Predicted, 113 kDa; observed, 130 kDa

Clonality: Rabbit monoclonal antibody

Clone ID: 24GB9360

Species Reactivity: Human, mouse, rat

Applications Tested: Western blotting (WB), flow cytometry (FCM), immunocytochemistry (IC)

Immunogen

A synthesized peptide derived from human GM130

Isotype

Rabbit IgG

Storage Buffer

Supplied in PBS (pH 7.4) containing 50% glycerol, and 0.02% sodium azide.

Storage

Store at -20 °C for one year.

Recommended Dilutions

Western Blotting (WB): 1:1,000-1:5,000

Flow Cytometry (FCM): 1:2,000

Immunocytochemistry (IC): 1:100-1:1,000

Note: This product is for research use only.

SUPPORT

SUPPORT@GENUINBIOTECH.COM
TEL: +1-540-855-7041

ORDERS

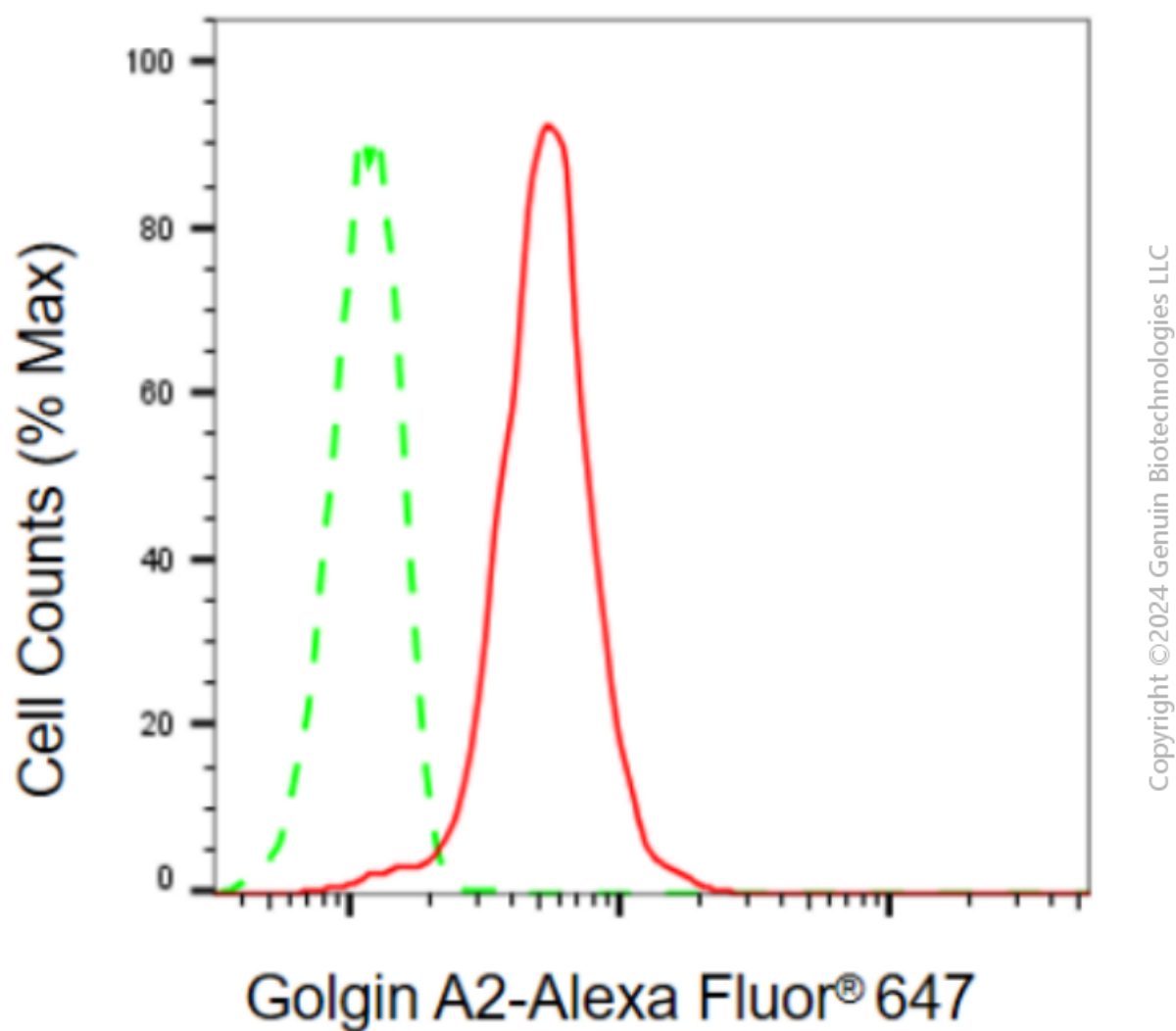
SALES@GENUINBIOTECH.COM
FAX: +1-540-855-7041

WWW.GENUINBIOTECH.COM

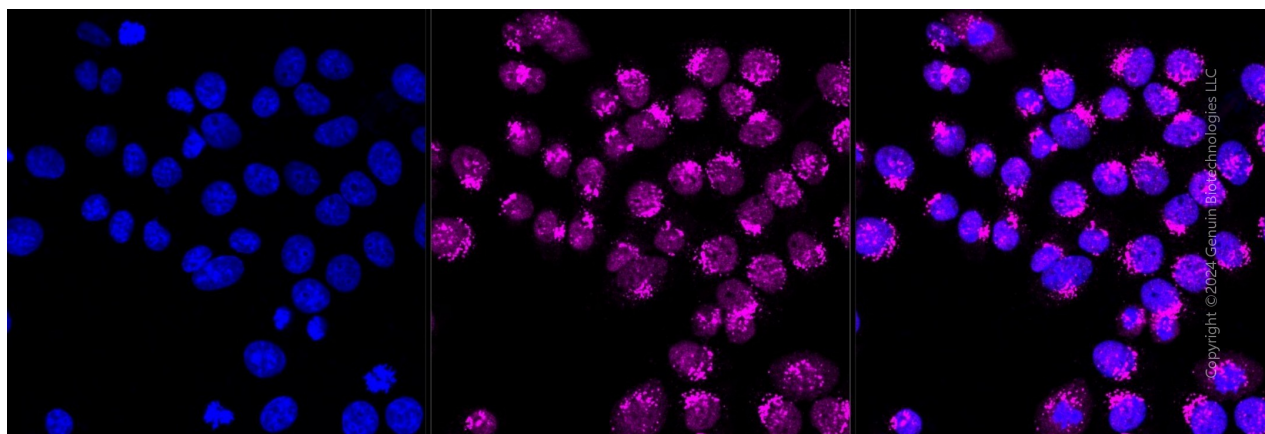
Anti-Golgin A2 Recombinant Rabbit Monoclonal Antibody

PAGE 2

Validation Data



Flow cytometric analysis of golgin A2 expression in HepG2 cells using anti-golgin A2 antibody (Cat#4054, 1:2,000). Green, isotype control; red, golgin A2.



SUPPORT

SUPPORT@GENUINBIOTECH.COM
TEL: +1-540-855-7041

ORDERS

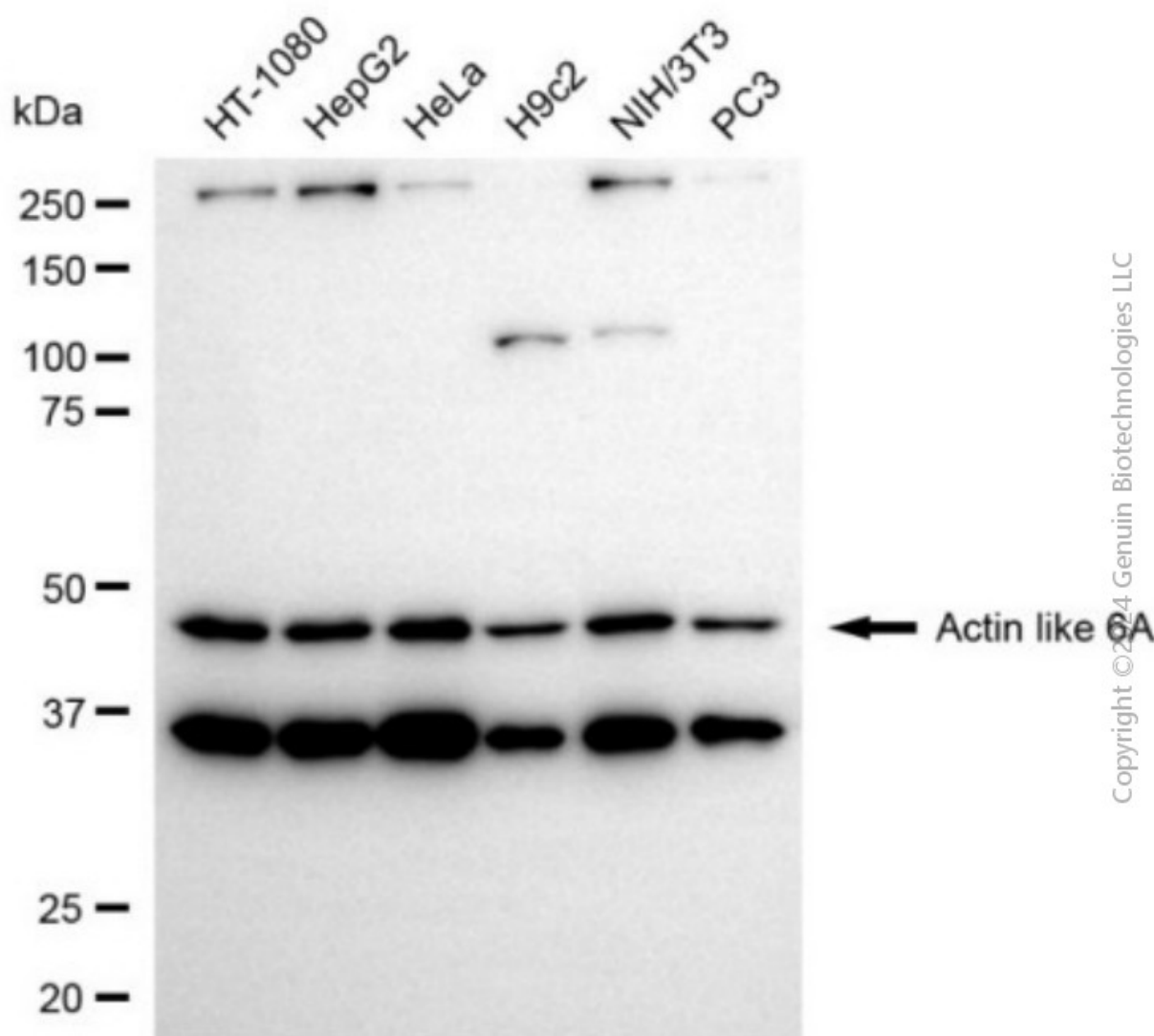
SALES@GENUINBIOTECH.COM
FAX: +1-540-855-7041

WWW.GENUINBIOTECH.COM

Anti-Golgin A2 Recombinant Rabbit Monoclonal Antibody

PAGE 3

Immunocytochemical staining of HepG2 cells with anti-Golgin A2 antibody (Cat#4054, 1:1,000). Nuclei were stained blue with DAPI; Golgin A2 was stained magenta with Alexa Fluor® 647. Images were taken using Leica stellaris 5. Protein abundance based on laser Intensity and smart gain: High. Scale bar, 20 μ m.



Western blotting analysis using anti-golgin A2 antibody (Cat#4054). Total cell lysates (30 μ g) from various cell lines were loaded and separated by SDS-PAGE. The blot was incubated with anti-golgin A2 antibody (Cat#4054, 1:5,000) and HRP-conjugated goat anti-rabbit secondary antibody (Cat#201, 1:20,000) respectively. Image was developed using FeQ™ ECL Substrate Kit (Cat#226).

SUPPORT

SUPPORT@GENUINBIOTECH.COM
TEL: +1-540-855-7041

ORDERS

SALES@GENUINBIOTECH.COM
FAX: +1-540-855-7041

WWW.GENUINBIOTECH.COM