

Anti-Histone deacetylase 1 Recombinant Rabbit Monoclonal Antibody



Catalog #: 4056

Aliases

HDAC1; Histone Deacetylase; HD1; GON-10; RPD3L1; KDAC1; Protein Deacetylase
HDAC1; Protein Deacetylase HDAC1; EC 3.5.1.98; Reduced Potassium Dependency, Yeast
Homolog-Like 1; EC 3.5.1.; RPD3

Background

Gene Name: HDAC1
NCBI Gene Entry: [3065](#)
UniProt Entry: [Q13547](#)

Application Information

Molecular Weight: Predicted, 55 kDa; observed, 55 kDa
Clonality: Rabbit monoclonal antibody
Clone ID: 24GB9370
Species Reactivity: Human, mouse, rat
Applications Tested: Western blotting (WB), flow cytometry (FCM), immunocytochemistry (IC)

Immunogen

A synthesized peptide derived from human HDAC1

Isotype

Rabbit IgG

Storage Buffer

Supplied in PBS (pH 7.4) containing 50% glycerol, and 0.02% sodium azide.

Storage

Store at -20 °C for one year.

Recommended Dilutions

Western Blotting (WB): 1:1,000-1:5,000
Flow Cytometry (FCM): 1:2,000
Immunocytochemistry (IC): 1:100-1:1,000

Note: This product is for research use only.

SUPPORT

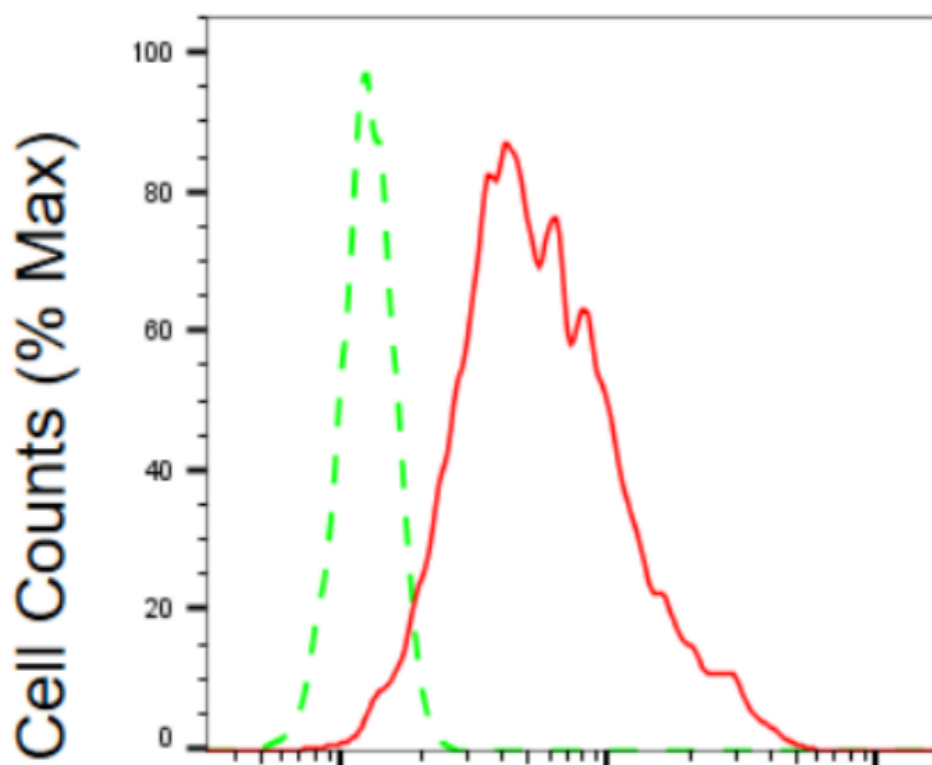
SUPPORT@GENUINBIOTECH.COM
TEL: +1-540-855-7041

ORDERS

SALES@GENUINBIOTECH.COM
FAX: +1-540-855-7041

WWW.GENUINBIOTECH.COM

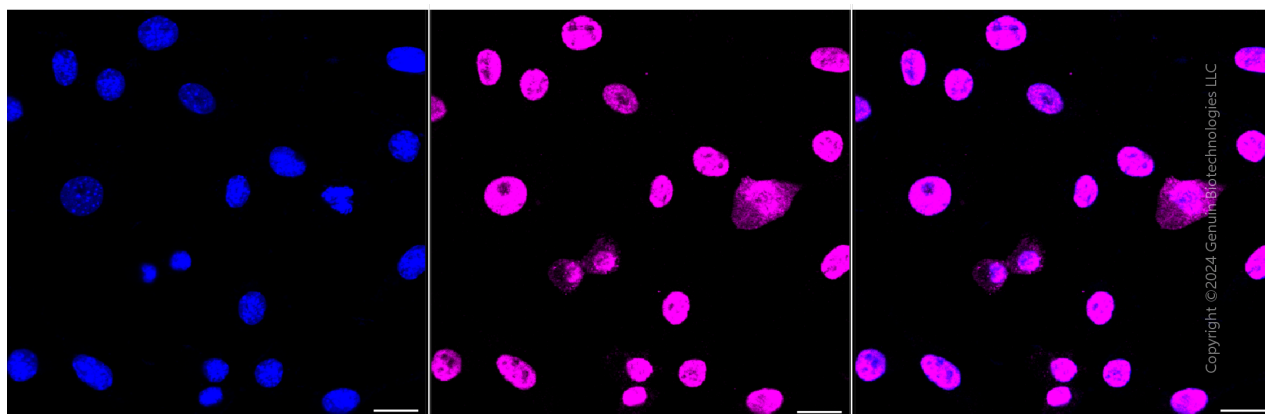
Validation Data



Copyright ©2024 Genuin Biotechnologies LLC

Histone deacetylase 1-Alexa Fluor® 647

Flow cytometric analysis of Histone deacetylase 1 expression in C2C12 cells using anti-Histone deacetylase 1 antibody (Cat#4056, 1:2,000). Green, isotype control; red, Histone deacetylase 1.



Copyright ©2024 Genuin Biotechnologies LLC

Immunocytochemical staining of C2C12 cells with anti-Histone deacetylase 1 antibody (Cat#4056, 1:1,000). Nuclei were stained blue with anti-DAPI; Histone deacetylase 1 was stained magenta with Alexa Fluor® 647. Images were taken using Leica stellaris 5. Protein abundance

SUPPORT

SUPPORT@GENUINBIOTECH.COM
TEL: +1-540-855-7041

ORDERS

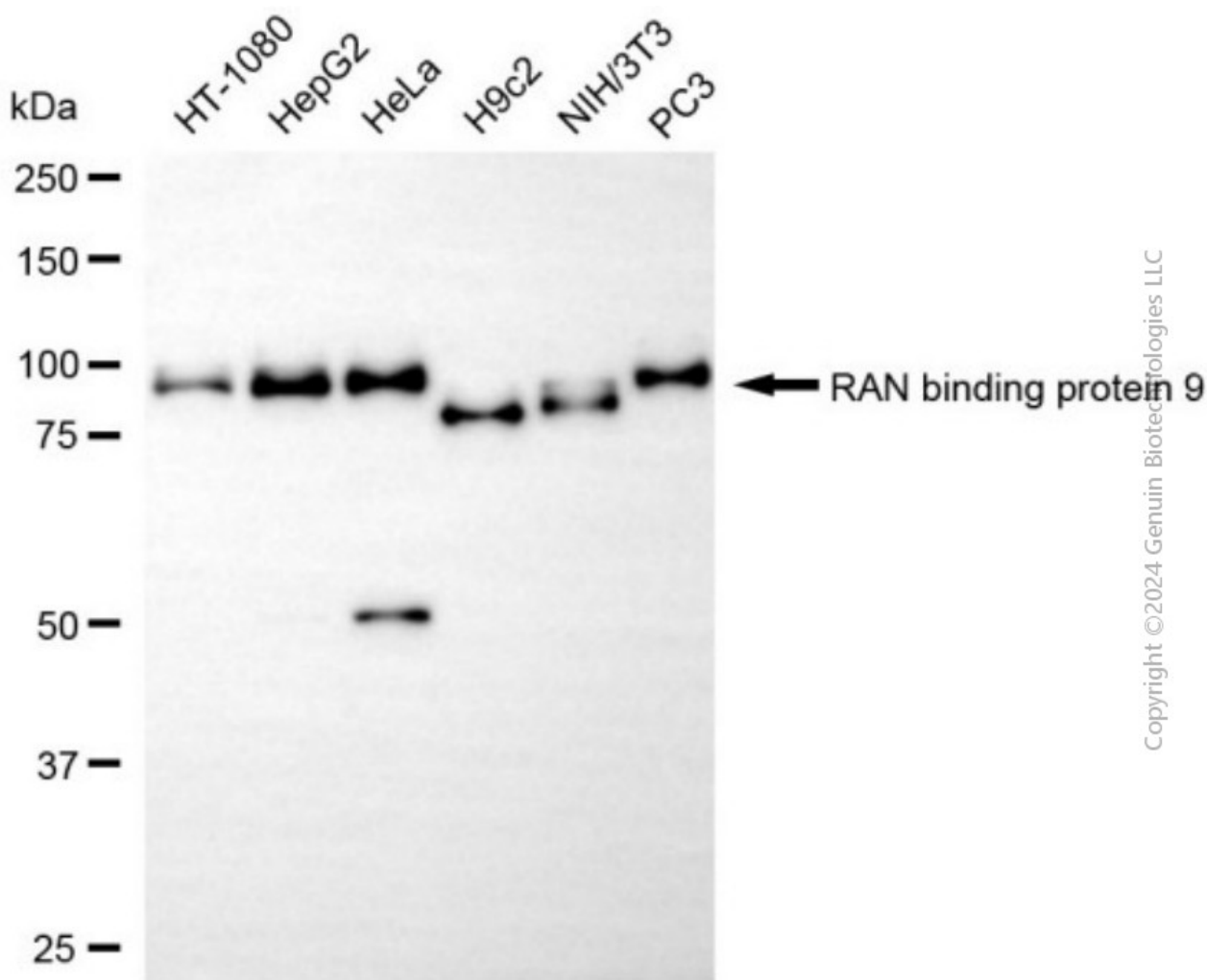
SALES@GENUINBIOTECH.COM
FAX: +1-540-855-7041

WWW.GENUINBIOTECH.COM

Anti-Histone deacetylase 1 Recombinant Rabbit Monoclonal Antibody

PAGE 3

based on laser Intensity and smart gain: High. Scale bar, 20 μ m.



Western blotting analysis using anti-histone deacetylase 1 antibody (Cat#4056). Total cell lysates (30 μ g) from various cell lines were loaded and separated by SDS-PAGE. The blot was incubated with anti-histone deacetylase 1 antibody (Cat#4056, 1:5,000) and HRP-conjugated goat anti-rabbit secondary antibody (Cat#201, 1:20,000) respectively. Image was developed using NaQ™ ECL Substrate Kit (Cat#716).

SUPPORT

SUPPORT@GENUINBIOTECH.COM
TEL: +1-540-855-7041

ORDERS

SALES@GENUINBIOTECH.COM
FAX: +1-540-855-7041

WWW.GENUINBIOTECH.COM