

# Anti-GCLM Recombinant Rabbit Monoclonal Antibody



**Catalog #: 4058**

## Aliases

GCLM; Glutamate-Cysteine Ligase Modifier Subunit; GLCLR; Gamma-Glutamylcysteine Synthetase Regulatory Subunit; Glutamate--Cysteine Ligase Regulatory Subunit; Gamma-ECS Regulatory Subunit; GCS Light Chain; Glutamate-Cysteine Ligase (Gamma-Glutamylcysteine Synthetase), Regulatory (30.8kD); Glutamate-Cysteine Ligase Modifier Subunit Delta2 Alternative Splicing; Glutamate-Cysteine Ligase Regulatory Protein; Glutamate-Cysteine Ligase, Modifier Subunit; Glutamate--Cysteine Ligase Modifier Subunit; Gamma-Glutamylcysteine Synthetase; GSC Light Chain

## Background

Gene Name: GCLM

NCBI Gene Entry: [2730](#)

UniProt Entry: [P48507](#)

## Application Information

Molecular Weight: Predicted, 31 kDa; observed, 28 kDa

Clonality: Rabbit monoclonal antibody

Clone ID: 24GB9380

Species Reactivity: Human, mouse, rat

Applications Tested: Western blotting (WB), flow cytometry (FCM), immunocytochemistry (IC)

## Immunogen

A synthesized peptide derived from human GCLM

## Isotype

Rabbit IgG

## Storage Buffer

Supplied in PBS (pH 7.4) containing 50% glycerol, and 0.02% sodium azide.

## Storage

Store at -20 °C for one year.

## Recommended Dilutions

Western Blotting (WB): 1:1,000-1:5,000

Flow Cytometry (FCM): 1:2,000

---

### SUPPORT

SUPPORT@GENUINBIOTECH.COM  
TEL: +1-540-855-7041

### ORDERS

SALES@GENUINBIOTECH.COM  
FAX: +1-540-855-7041

[WWW.GENUINBIOTECH.COM](http://WWW.GENUINBIOTECH.COM)

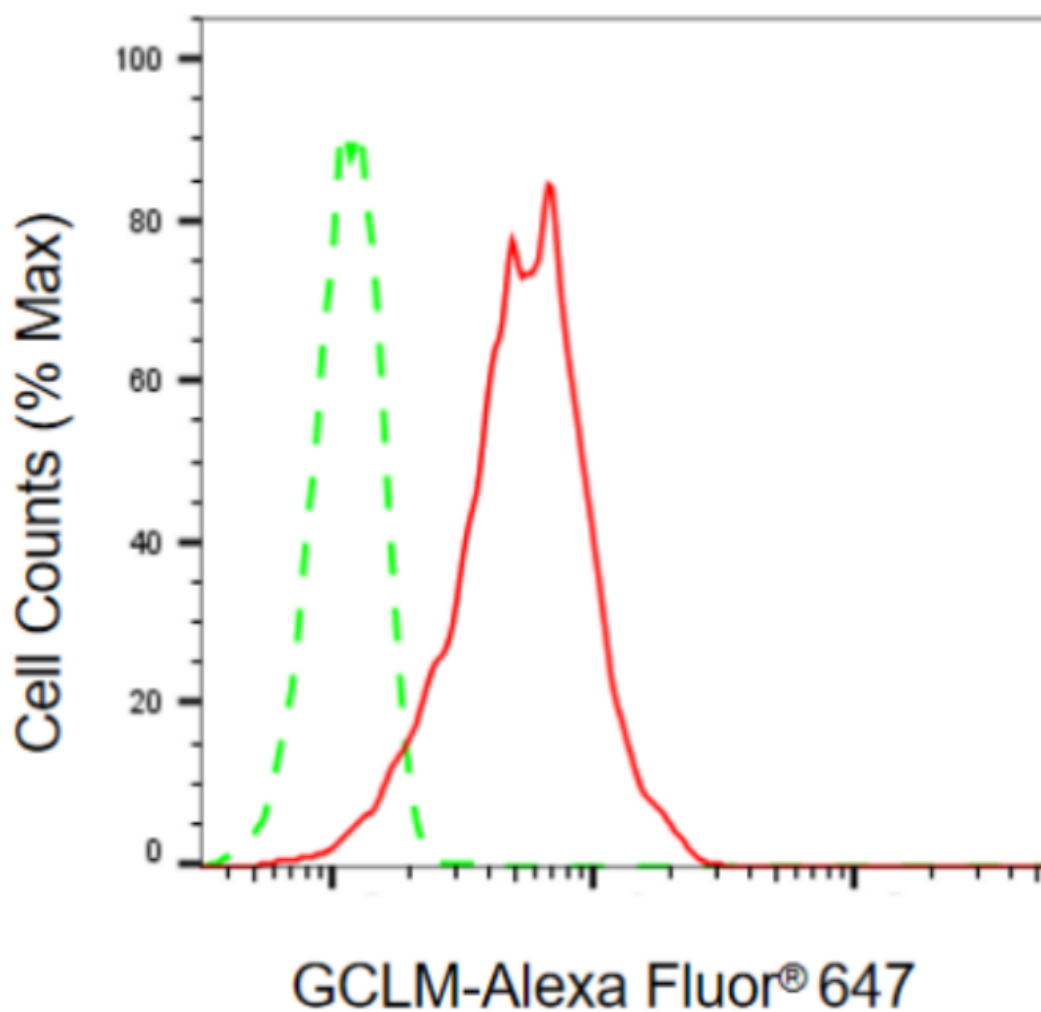
# Anti-GCLM Recombinant Rabbit Monoclonal Antibody

PAGE 2

Immunocytochemistry (IC): 1:100-1:1,000

**Note:** This product is for research use only.

## Validation Data



Copyright ©2024 Genuin Biotechnologies LLC

Flow cytometric analysis of GCLM expression in HepG2 cells using anti-GCLM antibody (Cat#4058, 1:2,000). Green, isotype control; red, GCLM.

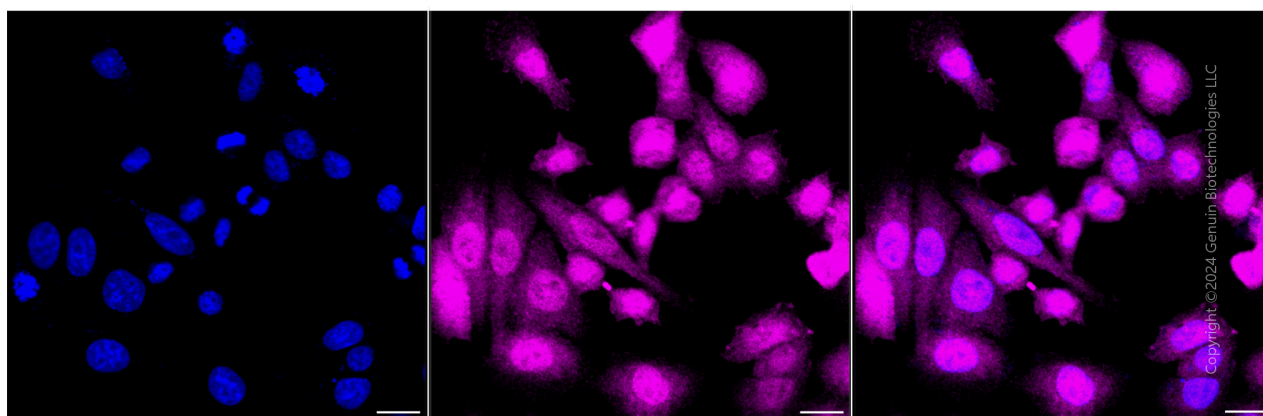
### SUPPORT

SUPPORT@GENUINBIOTECH.COM  
TEL: +1-540-855-7041

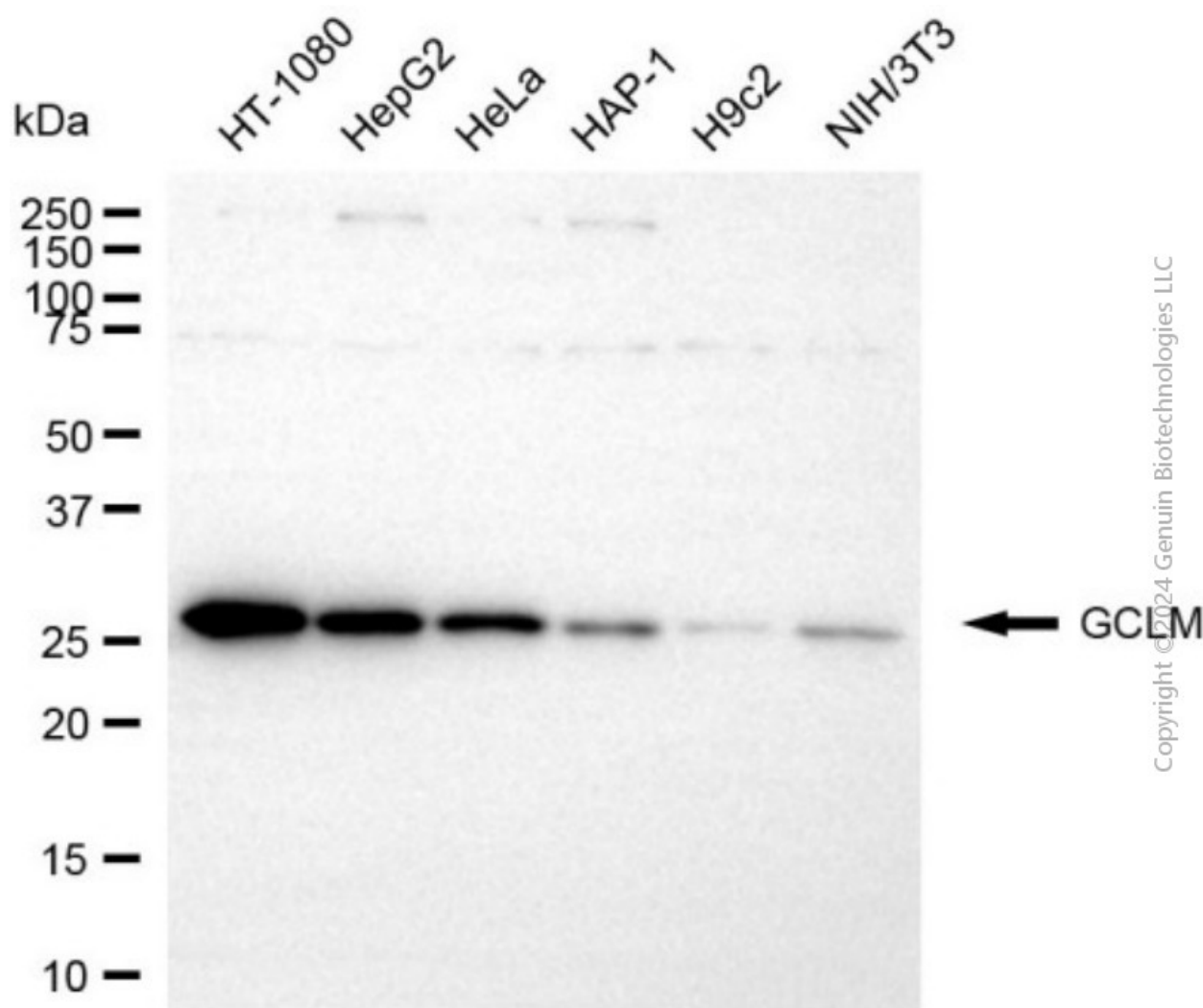
### ORDERS

SALES@GENUINBIOTECH.COM  
FAX: +1-540-855-7041

[WWW.GENUINBIOTECH.COM](http://WWW.GENUINBIOTECH.COM)



Immunocytochemical staining of HepG2 cells with anti-GCLM antibody (Cat#4058, 1:1,000). Nuclei were stained blue with DAPI; GCLM was stained magenta with Alexa Fluor® 647. Images were taken using Leica stellaris 5. Protein abundance based on laser Intensity and smart gain: Medium. Scale bar, 20  $\mu$ m.



## SUPPORT

SUPPORT@GENUINBIOTECH.COM  
TEL: +1-540-855-7041

## ORDERS

SALES@GENUINBIOTECH.COM  
FAX: +1-540-855-7041

[WWW.GENUINBIOTECH.COM](http://WWW.GENUINBIOTECH.COM)

## **Anti-GCLM Recombinant Rabbit Monoclonal Antibody**

PAGE 4

Western blotting analysis using anti-GCLM antibody (Cat#4058). Total cell lysates (30 µg) from various cell lines were loaded and separated by SDS-PAGE. The blot was incubated with anti-GCLM antibody (Cat#4058, 1:5,000) and HRP-conjugated goat anti-rabbit secondary antibody (Cat#201, 1:20,000) respectively. Image was developed using NaQ™ ECL Substrate Kit (Cat#716).

---

### **SUPPORT**

SUPPORT@GENUINBIOTECH.COM  
TEL: +1-540-855-7041

### **ORDERS**

SALES@GENUINBIOTECH.COM  
FAX: +1-540-855-7041

**WWW.GENUINBIOTECH.COM**