

Anti-Phospho-DNA PKcs (S2056) Recombinant Rabbit Monoclonal Antibody



Catalog #: 4062

Aliases

PRKDC; Protein Kinase, DNA-Activated, Catalytic Subunit; DNPK1; P460; DNA-Dependent Protein Kinase Catalytic Subunit; DNA-PKcs; DNA-PKC; DNAPK; XRCC7; HYRC1; P350; HYRC; Protein Kinase, DNA-Activated, Catalytic Polypeptide; DNA-PK Catalytic Subunit; EC 2.7.11.1; DNAPKc; Hyper-Radiosensitivity Of Murine Scid Mutation, Complementing 1; DNA-PKCS; DNAPKC; IMD26

Background

Gene Name: PRKDC

NCBI Gene Entry: [5591](#)

UniProt Entry: [P78527](#)

Application Information

Molecular Weight: Predicted, 469 kDa; observed, 469 kDa

Clonality: Rabbit monoclonal antibody

Clone ID: 24GB9400

Species Reactivity: Human

Applications Tested: Western blotting (WB), flow cytometry (FCM), immunocytochemistry (IC)

Immunogen

A synthesized peptide derived from human Phospho-DNA PKcs (S2056)

Isotype

Rabbit IgG

Storage Buffer

Supplied in PBS (pH 7.4) containing 50% glycerol, and 0.02% sodium azide.

Storage

Store at -20 °C for one year.

Recommended Dilutions

Western blotting (WB): 1:1,000-1:5,000

Flow Cytometry (FCM): 1:2,000

Immunocytochemistry (IC): 1:100-1:1,000

SUPPORT

SUPPORT@GENUINBIOTECH.COM
TEL: +1-540-855-7041

ORDERS

SALES@GENUINBIOTECH.COM
FAX: +1-540-855-7041

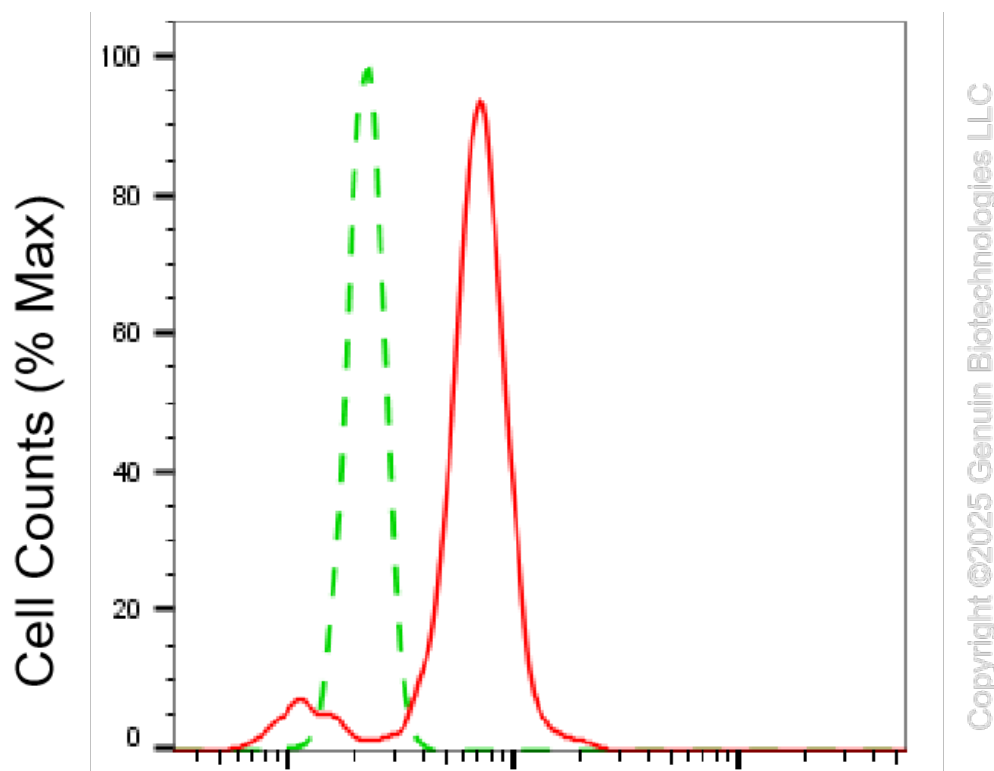
WWW.GENUINBIOTECH.COM

Anti-Phospho-DNA PKcs (S2056) Recombinant Rabbit Monoclonal Antibody

PAGE 2

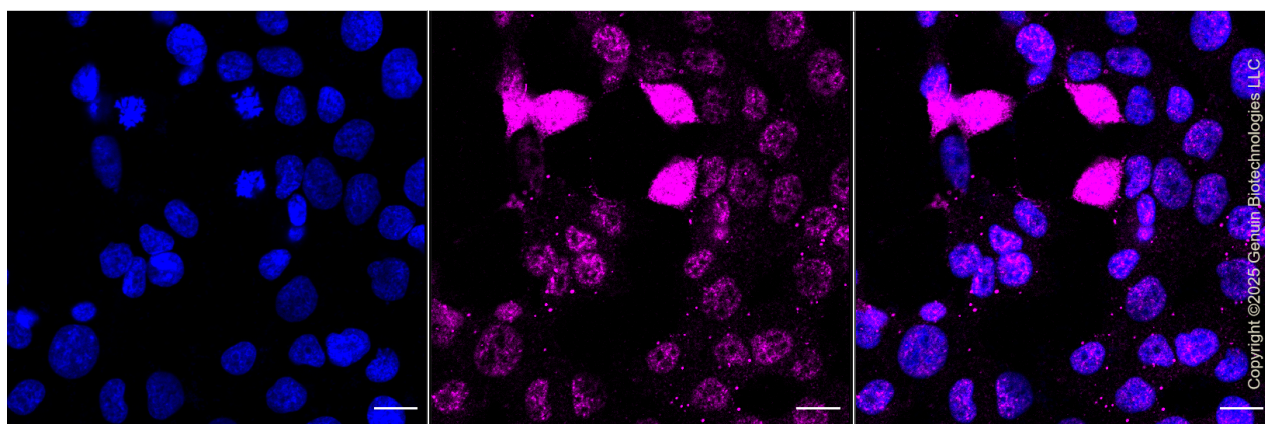
Note: This product is for research use only.

Validation Data



Phospho-DNA PKcs (S2056)-Alexa Fluor® 647

Flow cytometric analysis of Phospho-DNA PKcs (S2056) expression in HT-1080 cells using anti-Phospho-DNA PKcs (S2056) antibody (Cat#4062, 1:2,000). Green, isotype control; red, Phospho-DNA PKcs (S2056).



Immunocytochemical staining of HT-1080 cells with anti-Phospho-DNA PKcs (S2056) antibody (Cat#4062, 1:1,000). Nuclei were stained blue with DAPI; Phospho-DNA PKcs (S2056) was

SUPPORT

SUPPORT@GENUINBIOTECH.COM
TEL: +1-540-855-7041

ORDERS

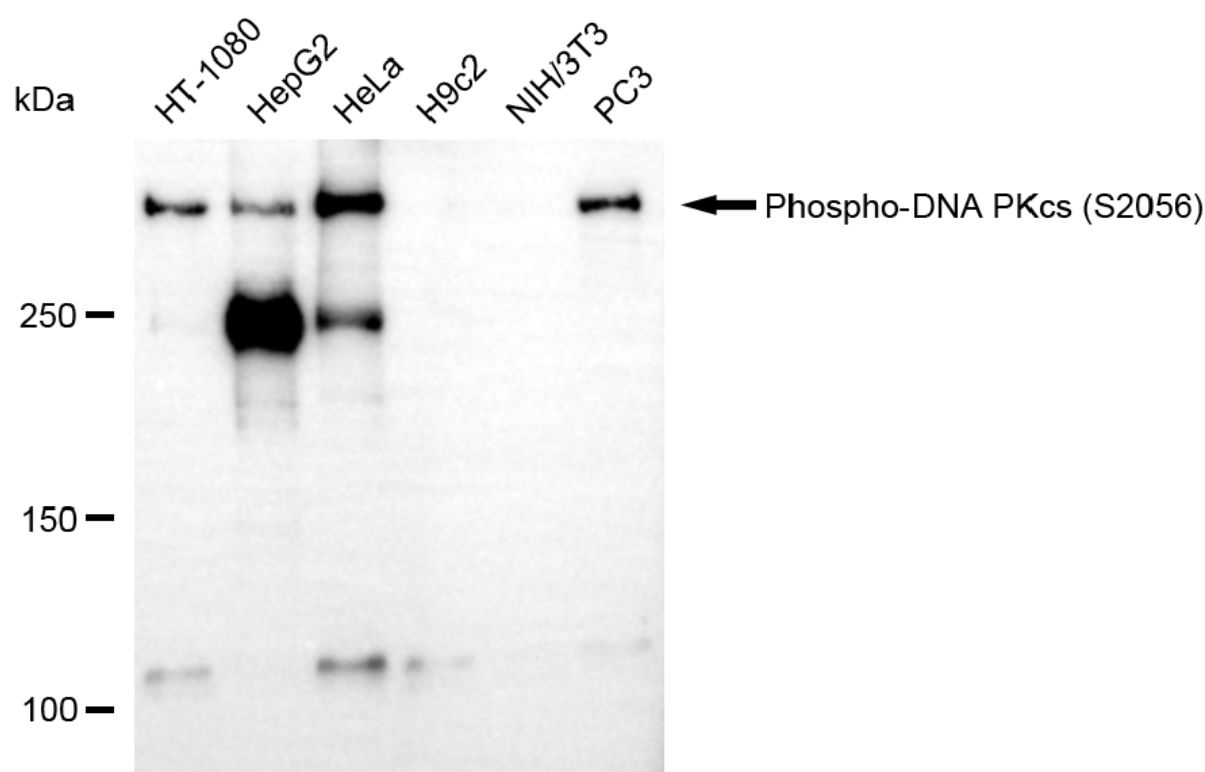
SALES@GENUINBIOTECH.COM
FAX: +1-540-855-7041

WWW.GENUINBIOTECH.COM

Anti-Phospho-DNA PKcs (S2056) Recombinant Rabbit Monoclonal Antibody

PAGE 3

stained magenta with Alexa Fluor® 647. Images were taken using Leica stellaris 5. Protein abundance based on laser Intensity and smart gain: Medium. Scale bar, 20 μ m.



Copyright ©2025 Genuin Biotechnologies LLC

Western blotting analysis using anti-phospho-DNA PKcs (S2056) antibody (Cat#4062). Total cell lysates (30 μ g) from various cell lines were loaded and separated by SDS-PAGE. The blot was incubated with anti-phospho-DNA PKcs (S2056) antibody (Cat#4062, 1:5,000) and HRP-conjugated goat anti-rabbit secondary antibody (Cat#201, 1:20,000) respectively. Image was developed using FeQ™ ECL Substrate Kit (Cat#226).

SUPPORT

SUPPORT@GENUINBIOTECH.COM
TEL: +1-540-855-7041

ORDERS

SALES@GENUINBIOTECH.COM
FAX: +1-540-855-7041

WWW.GENUINBIOTECH.COM