

# Anti-Hsp90 beta Recombinant Rabbit Monoclonal Antibody



**Catalog #: 4063**

## Aliases

HSP90AB1; Heat Shock Protein 90 Alpha Family Class B Member 1; HSPC2; HSPCB; Heat Shock Protein 90kDa Alpha (Cytosolic), Class B Member 1; Heat Shock 90kD Protein 1, Beta; Heat Shock Protein HSP 90-Beta; Heat Shock 84 KDa; HSP90B; HSP84; Heat Shock Protein 90kDa Alpha Family Class B Member 1; Heat Shock 90kDa Protein 1, Beta; Heat Shock Protein 90 KDa; HSP90-Beta; D6S182; HSP 90; HSP 84

## Background

Gene Name: HSP90AB1

NCBI Gene Entry: [3326](#)

UniProt Entry: [P08238](#)

## Application Information

Molecular Weight: Predicted, 83 kDa; observed, 85 kDa

Clonality: Rabbit monoclonal antibody

Clone ID: 24GB9405

Species Reactivity: Human, mouse, rat

Applications Tested: Western blotting (WB), flow cytometry (FCM), immunocytochemistry (IC)

## Immunogen

A synthesized peptide derived from human Hsp90 beta

## Isotype

Rabbit IgG

## Storage Buffer

Supplied in PBS (pH 7.4) containing 50% glycerol, and 0.02% sodium azide.

## Storage

Store at -20 °C for one year.

## Recommended Dilutions

Western Blotting (WB): 1:1,000-1:5,000

Flow Cytometry (FCM): 1:2,000

Immunocytochemistry (IC): 1:100-1:1,000

---

### SUPPORT

SUPPORT@GENUINBIOTECH.COM  
TEL: +1-540-855-7041

### ORDERS

SALES@GENUINBIOTECH.COM  
FAX: +1-540-855-7041

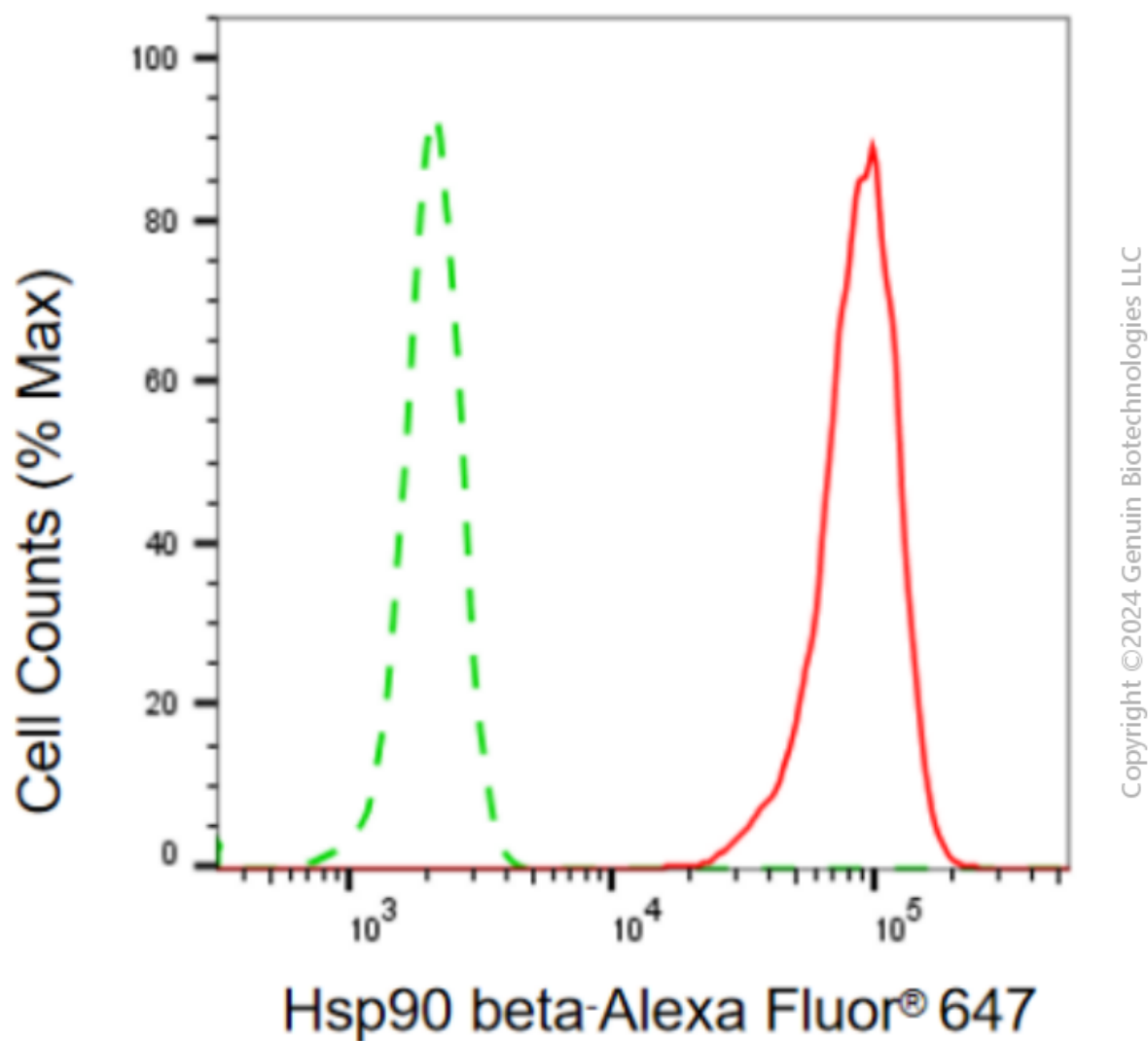
[WWW.GENUINBIOTECH.COM](http://WWW.GENUINBIOTECH.COM)

# Anti-Hsp90 beta Recombinant Rabbit Monoclonal Antibody

PAGE 2

**Note:** This product is for research use only.

## Validation Data



Flow cytometric analysis of Hsp90 beta expression in HepG2 cells using anti-Hsp90 beta antibody (Cat#4063, 1:2,000). Green, isotype control; red, Hsp90 beta.

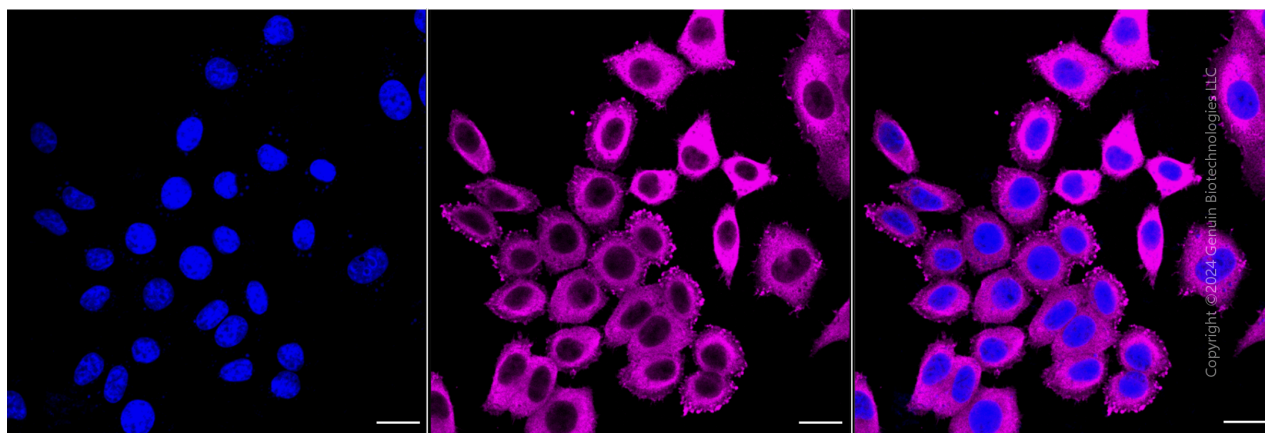
### SUPPORT

SUPPORT@GENUINBIOTECH.COM  
TEL: +1-540-855-7041

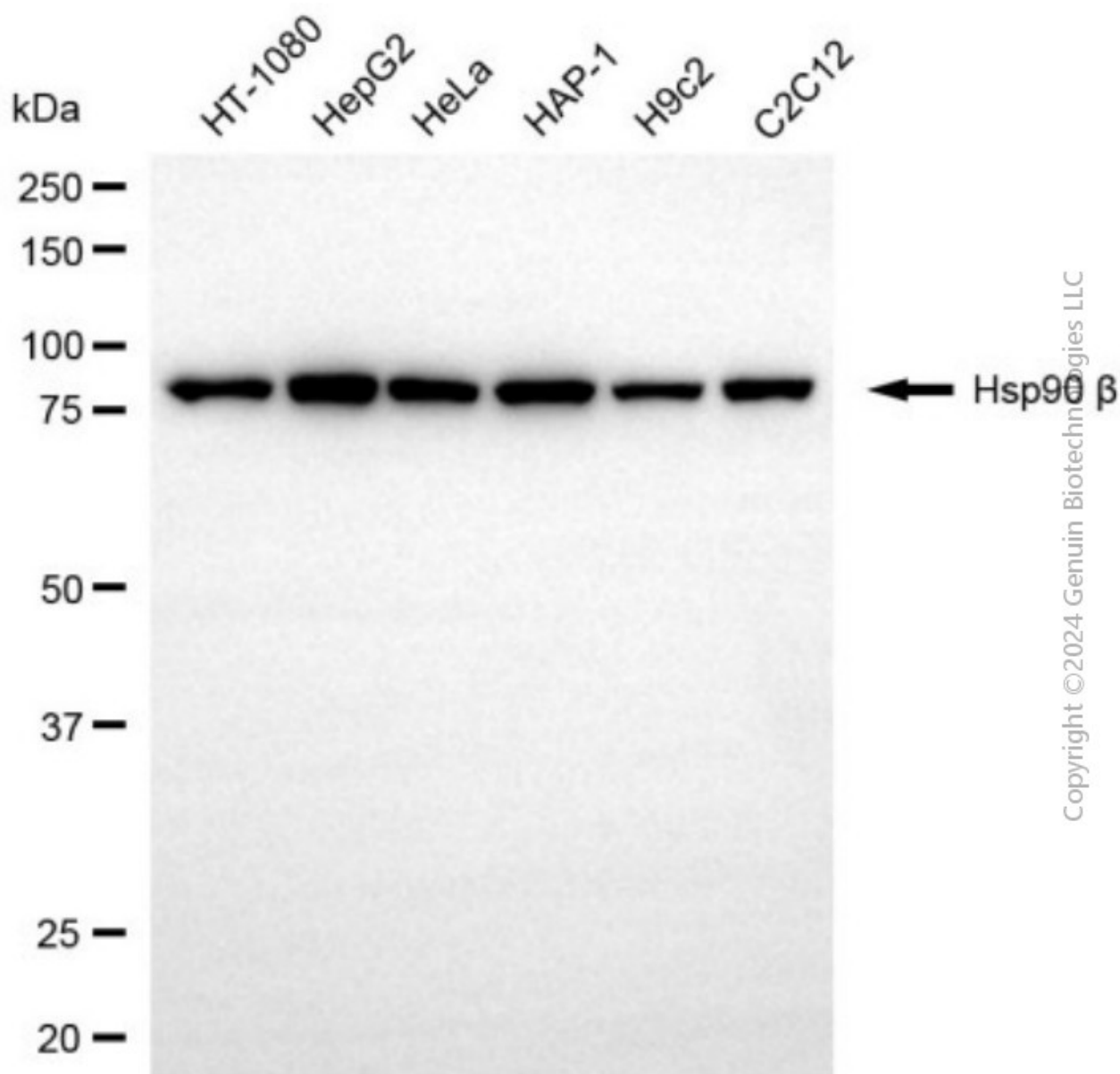
### ORDERS

SALES@GENUINBIOTECH.COM  
FAX: +1-540-855-7041

[WWW.GENUINBIOTECH.COM](http://WWW.GENUINBIOTECH.COM)



Immunocytochemical staining of HepG2 cells with anti-Hsp90 beta antibody (Cat#4063, 1:1,000). Nuclei were stained blue with DAPI; Hsp90 beta was stained magenta with Alexa Fluor® 647. Images were taken using Leica stellaris 5. Protein abundance based on laser Intensity and smart gain: High. Scale bar, 20  $\mu$ m.



Copyright ©2024 Genuin Biotechnologies LLC

Western blotting analysis using anti-Hsp90 beta antibody (Cat#4063). Total cell lysates (30 µg) from various cell lines were loaded and separated by SDS-PAGE. The blot was incubated with anti-Hsp90 beta antibody (Cat#4063, 1:5,000) and HRP-conjugated goat anti-rabbit secondary antibody (Cat#201, 1:20,000) respectively. Image was developed using NaQ™ ECL Substrate Kit (Cat#716).