

# Anti-CD146 Recombinant Rabbit Monoclonal Antibody



**Catalog #: 4065**

## Aliases

MCAM; Melanoma Cell Adhesion Molecule; MUC18; METCAM; HEMCAM; CD146; S-Endo 1 Endothelial-Associated Antigen; Melanoma-Associated Antigen MUC18; Cell Surface Glycoprotein MUC18; Cell Surface Glycoprotein P1H12; Melanoma-Associated Antigen A32; Gicerin; MelCAM; Melanoma Adhesion Molecule; CD146 Antigen; MELCAM

## Background

Gene Name: MCAM

NCBI Gene Entry: [4162](#)

UniProt Entry: [P43121](#)

## Application Information

Molecular Weight: Predicted, 72 kDa; observed, 72 kDa

Clonality: Rabbit monoclonal antibody

Clone ID: 24GB9415

Species Reactivity: Human

Applications Tested: Western blotting (WB), flow cytometry (FCM), immunocytochemistry (IC)

## Immunogen

A synthesized peptide derived from human CD146

## Isotype

Rabbit IgG

## Storage Buffer

Supplied in PBS (pH 7.4) containing 50% glycerol, and 0.02% sodium azide.

## Storage

Store at -20 °C for one year.

## Recommended Dilutions

Western Blotting (WB): 1:1,000-1:5,000

Flow Cytometry (FCM): 1:2,000

Immunocytochemistry (IC): 1:100-1:1,000

---

### SUPPORT

SUPPORT@GENUINBIOTECH.COM  
TEL: +1-540-855-7041

### ORDERS

SALES@GENUINBIOTECH.COM  
FAX: +1-540-855-7041

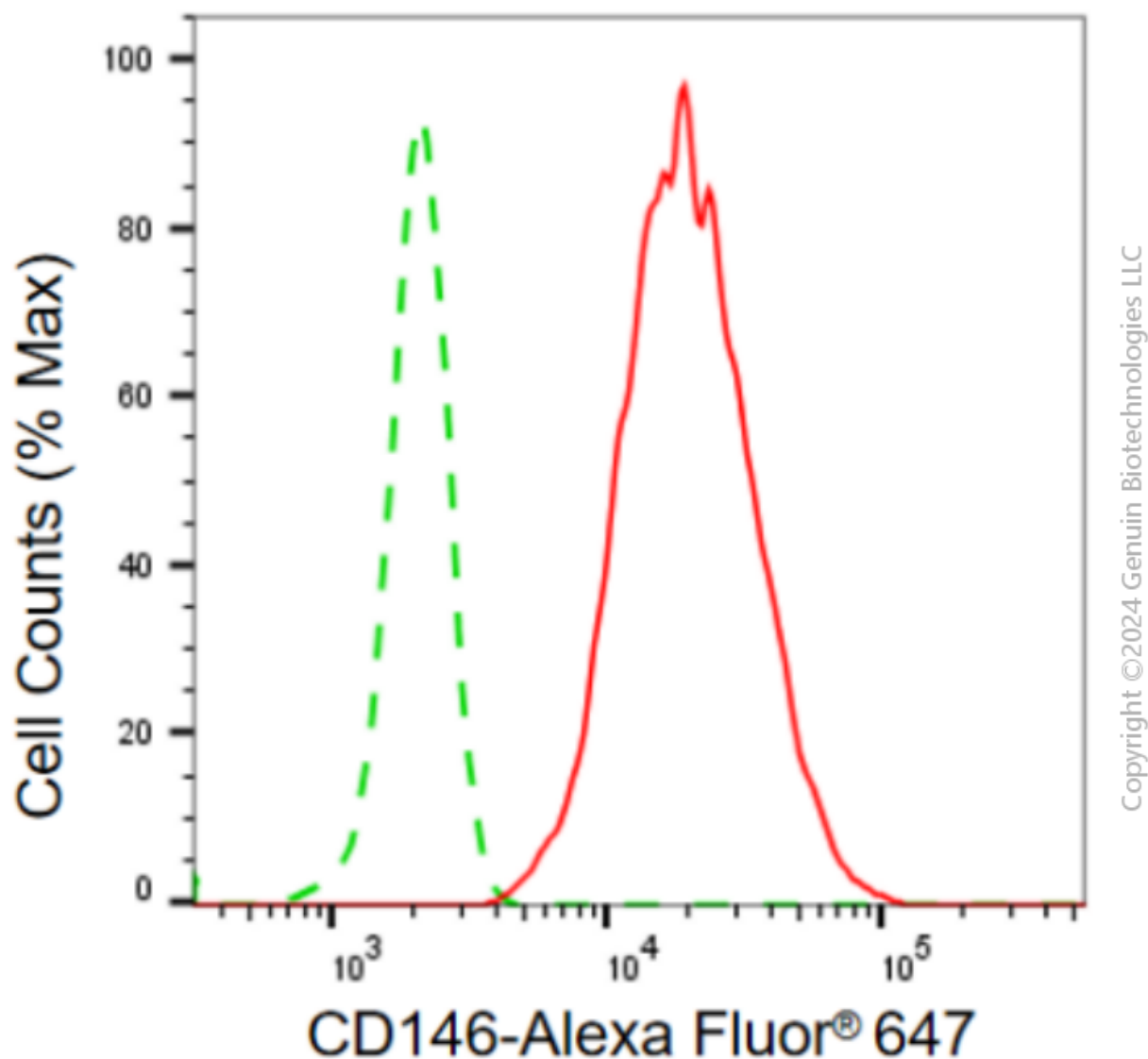
[WWW.GENUINBIOTECH.COM](http://WWW.GENUINBIOTECH.COM)

# Anti-CD146 Recombinant Rabbit Monoclonal Antibody

PAGE 2

**Note:** This product is for research use only.

## Validation Data



Flow cytometric analysis of CD146 expression in HepG2 cells using anti-CD146 antibody (Cat#4065, 1:2,000). Green, isotype control; red, CD146.

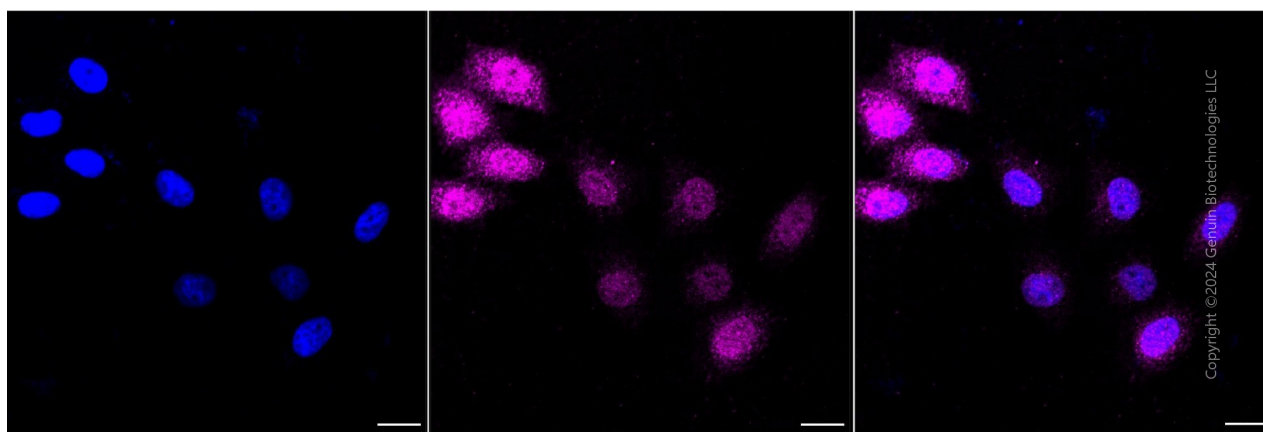
### SUPPORT

SUPPORT@GENUINBIOTECH.COM  
TEL: +1-540-855-7041

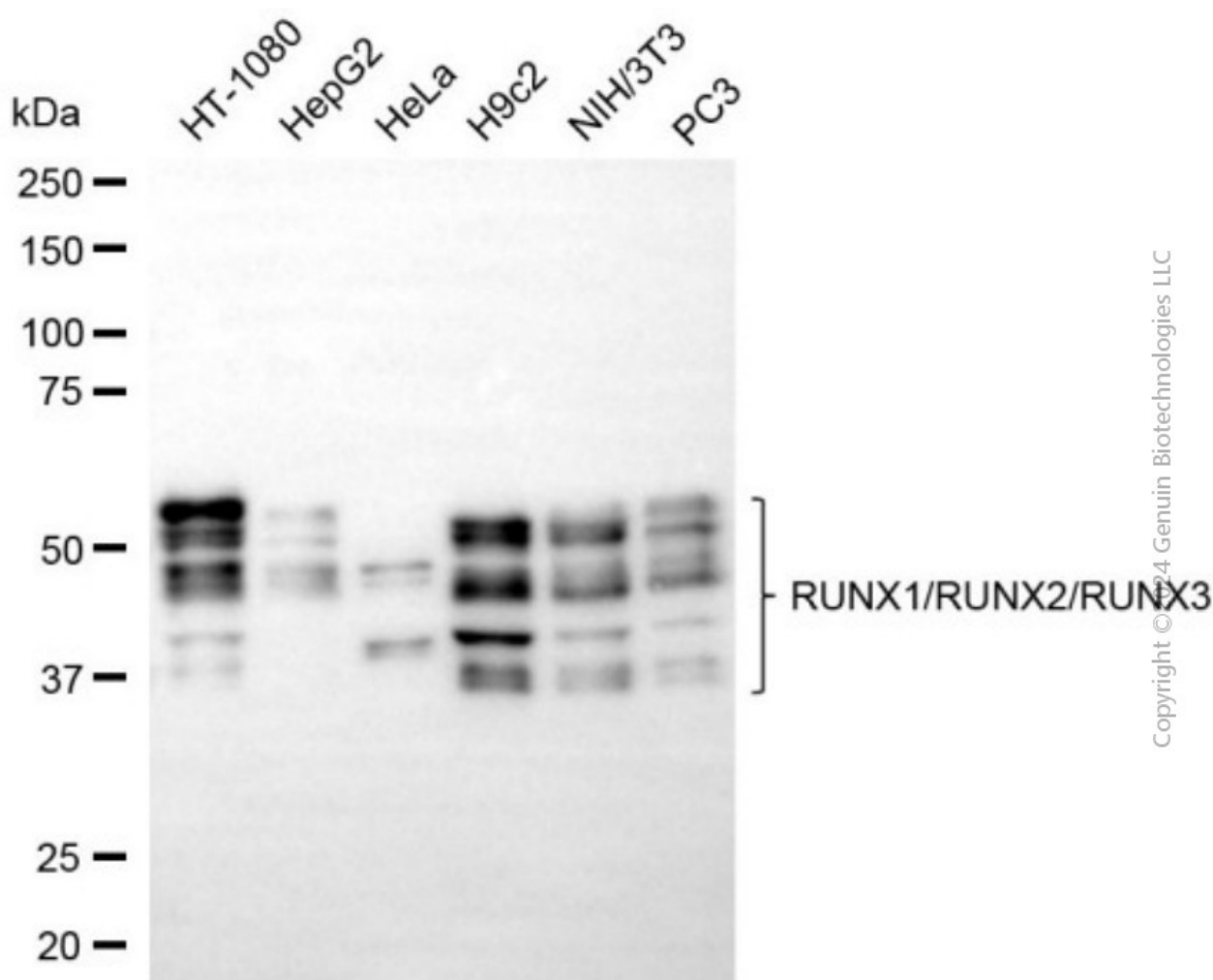
### ORDERS

SALES@GENUINBIOTECH.COM  
FAX: +1-540-855-7041

[WWW.GENUINBIOTECH.COM](http://WWW.GENUINBIOTECH.COM)



Immunocytochemical staining of HepG2 cells with anti-CD146 antibody (Cat#4065, 1:1,000). Nuclei were stained blue with DAPI; CD146 was stained magenta with Alexa Fluor® 647. Images were taken using Leica stellaris 5. Protein abundance based on laser Intensity and smart gain: Medium. Scale bar, 20  $\mu$ m.



Western blotting analysis using anti-CD146 antibody (Cat#4065). Total cell lysates (30  $\mu$ g) from

## **Anti-CD146 Recombinant Rabbit Monoclonal Antibody**

PAGE 4

various cell lines were loaded and separated by SDS-PAGE. The blot was incubated with anti-CD146 antibody (Cat#4065, 1:5,000) and HRP-conjugated goat anti-rabbit secondary antibody (Cat#201, 1:20,000) respectively. Image was developed using NaQ™ ECL Substrate Kit (Cat#716).

---

### **SUPPORT**

SUPPORT@GENUINBIOTECH.COM  
TEL: +1-540-855-7041

### **ORDERS**

SALES@GENUINBIOTECH.COM  
FAX: +1-540-855-7041

**WWW.GENUINBIOTECH.COM**