

Anti-Desmin Recombinant Rabbit Monoclonal Antibody



Catalog #: 4069

Aliases

DES; Desmin; CSM1; CSM2; Intermediate Filament Protein; Cardiomyopathy, Dilated 1I; LGMD2R; CMD1I; Cardiomyopathy, Dilated 1F (Autosomal Dominant); Epididymis Secretory Sperm Binding Protein; LGMD1D; LGMD1E; CDCD3

Background

Gene Name: DES

NCBI Gene Entry: [1674](#)

UniProt Entry: [P17661](#)

Application Information

Molecular Weight: Predicted, 54 kDa; observed, 36 kDa

Clonality: Rabbit monoclonal antibody

Clone ID: 24GB9435

Species Reactivity: Human, mouse, rat

Applications Tested: Western blotting (WB), flow cytometry (FCM), immunocytochemistry (IC)

Immunogen

A synthesized peptide derived from human Desmin

Isotype

Rabbit IgG

Storage Buffer

Supplied in PBS (pH 7.4) containing 50% glycerol, and 0.02% sodium azide.

Storage

Store at -20 °C for one year.

Recommended Dilutions

Western Blotting (WB): 1:4,000-1:20,000

Flow Cytometry (FCM): 1:2,000

Immunocytochemistry (IC): 1:100-1:1,000

Note: This product is for research use only.

SUPPORT

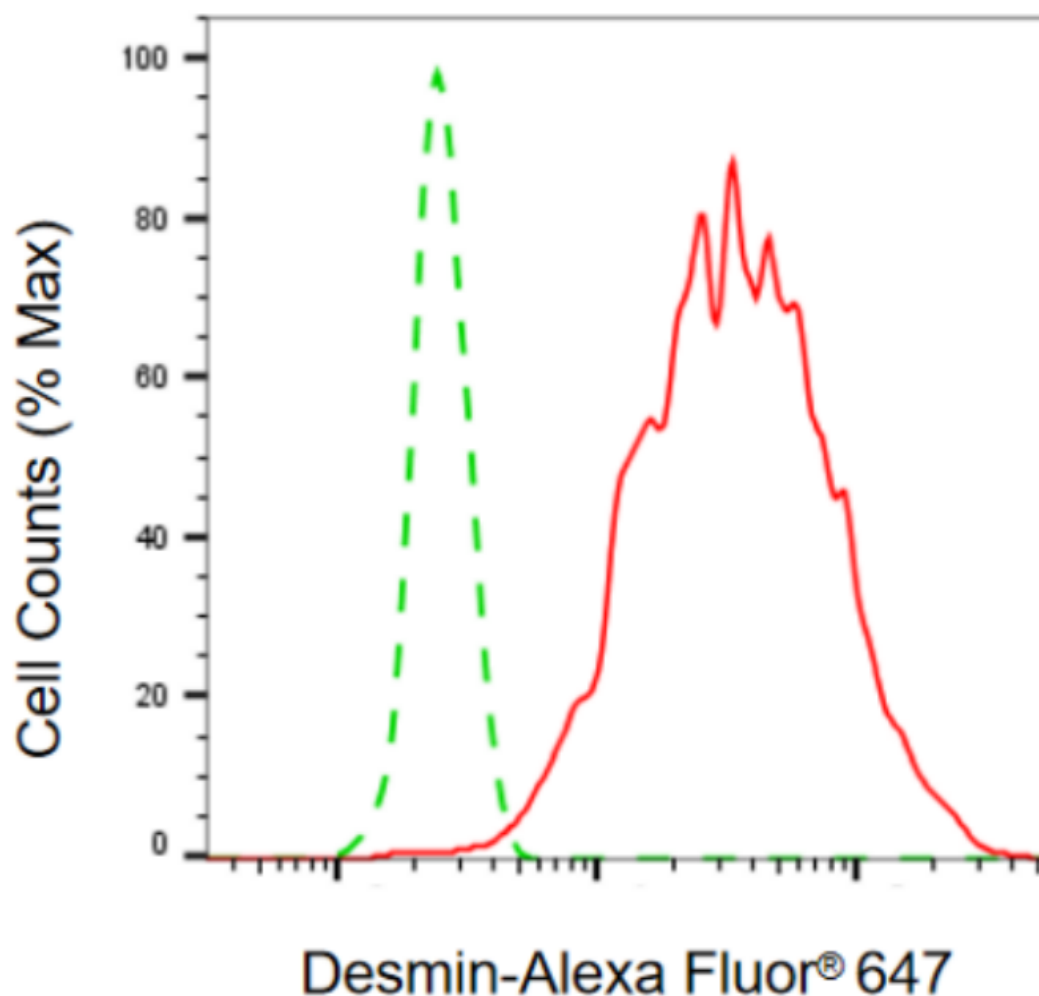
SUPPORT@GENUINBIOTECH.COM
TEL: +1-540-855-7041

ORDERS

SALES@GENUINBIOTECH.COM
FAX: +1-540-855-7041

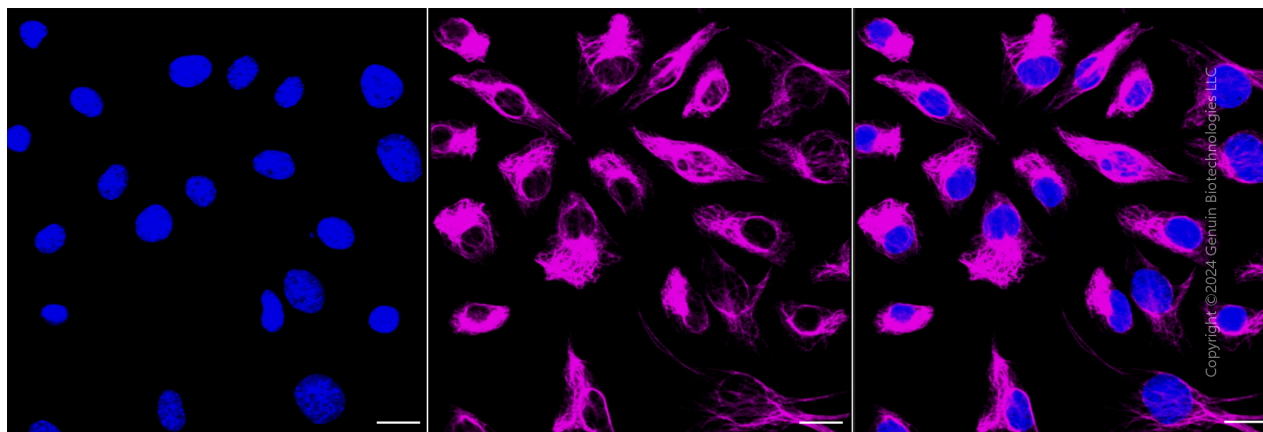
WWW.GENUINBIOTECH.COM

Validation Data



Copyright ©2024 Genuin Biotechnologies LLC

Flow cytometric analysis of desmin expression in C2C12 cells using anti-desmin antibody (Cat#4069, 1:2,000). Green, isotype control; red, desmin.



Copyright ©2024 Genuin Biotechnologies LLC

SUPPORT

SUPPORT@GENUINBIOTECH.COM
TEL: +1-540-855-7041

ORDERS

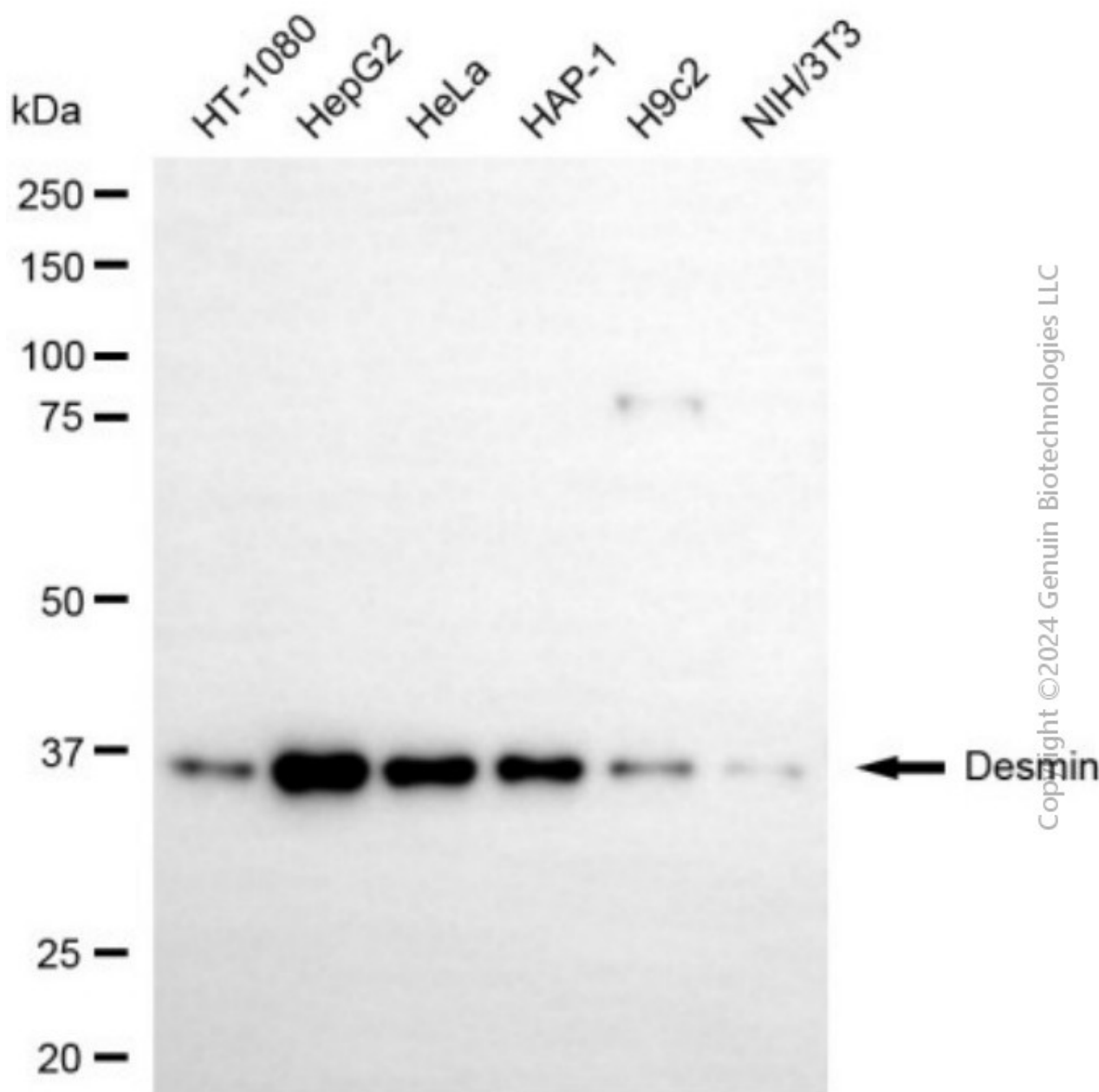
SALES@GENUINBIOTECH.COM
FAX: +1-540-855-7041

WWW.GENUINBIOTECH.COM

Anti-Desmin Recombinant Rabbit Monoclonal Antibody

PAGE 3

Immunocytochemical staining of C2C12 cells with anti-desmin antibody (Cat#4069, 1:1,000). Nuclei were stained blue with DAPI; Desmin was stained magenta with Alexa Fluor® 647. Images were taken using Leica stellaris 5. Protein abundance based on laser Intensity and smart gain: High. Scale bar, 20 μ m.



Western blotting analysis using anti-desmin antibody (Cat#4069). Total cell lysates (30 μ g) from various cell lines were loaded and separated by SDS-PAGE. The blot was incubated with anti-desmin antibody (Cat#4069, 1:20,000) and HRP-conjugated goat anti-rabbit secondary antibody (Cat#201, 1:20,000) respectively. Image was developed using NaQ™ ECL Substrate Kit (Cat#716).

SUPPORT

SUPPORT@GENUINBIOTECH.COM
TEL: +1-540-855-7041

ORDERS

SALES@GENUINBIOTECH.COM
FAX: +1-540-855-7041

WWW.GENUINBIOTECH.COM