

Anti-Brain derived neurotrophic factor Recombinant Rabbit Monoclonal Antibody



Catalog #: 4073

Aliases

BDNF; Brain Derived Neurotrophic Factor; Brain-Derived Neurotrophic Factor; Neurotrophin; Abrineurin; ANON2; BULN2

Background

Gene Name: BDNF

NCBI Gene Entry: [627](#)

UniProt Entry: [P23560](#)

Application Information

Molecular Weight: Predicted, 28 kDa; observed, 28 kDa

Clonality: Rabbit monoclonal antibody

Clone ID: 24GB9455

Species Reactivity: Human, mouse, rat

Applications Tested: Western blotting (WB), flow cytometry (FCM), immunocytochemistry (IC)

Immunogen

A synthesized peptide derived from human BDNF

Isotype

Rabbit IgG

Storage Buffer

Supplied in PBS (pH 7.4) containing 50% glycerol, and 0.02% sodium azide.

Storage

Store at -20 °C for one year.

Recommended Dilutions

Western Blotting (WB): 1:1,000-1:5,000

Flow Cytometry (FCM): 1:2,000

Immunocytochemistry (IC): 1:100-1:1,000

Note: This product is for research use only.

Validation Data

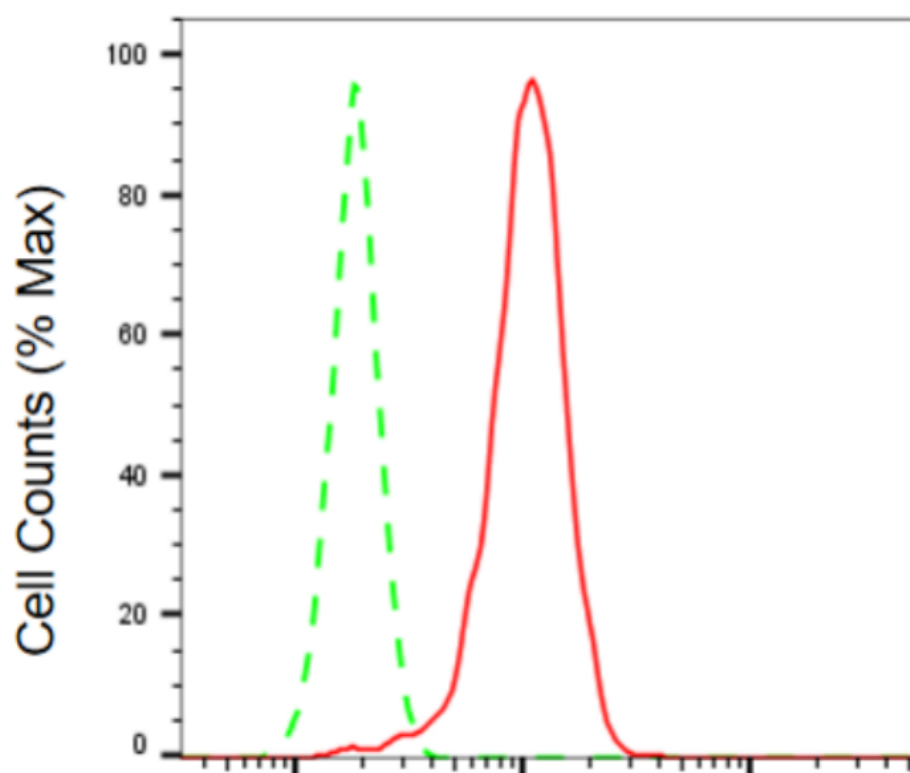
SUPPORT

SUPPORT@GENUINBIOTECH.COM
TEL: +1-540-855-7041

ORDERS

SALES@GENUINBIOTECH.COM
FAX: +1-540-855-7041

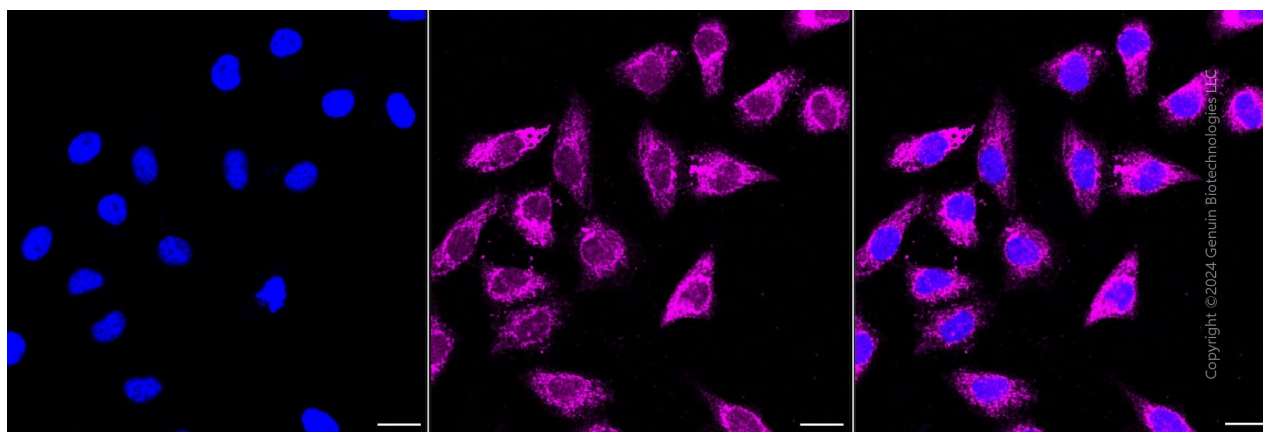
WWW.GENUINBIOTECH.COM



Copyright ©2024 Genuin Biotechnologies LLC

Brain derived neurotrophic factor-Alexa Fluor® 647

Flow cytometric analysis of brain derived neurotrophic factor expression in HepG2 cells using anti-brain derived neurotrophic factor antibody (Cat#4073, 1:2,000). Green, isotype control; red, brain derived neurotrophic factor.



Copyright ©2024 Genuin Biotechnologies LLC

Immunocytochemical staining of HepG2 cells with anti-Brain derived neurotrophic factor antibody (Cat#4073, 1:1,000). Nuclei were stained blue with DAPI; Brain derived neurotrophic factor was stained magenta with Alexa Fluor® 647. Images were taken using Leica stellaris 5. Protein abundance based on laser Intensity and smart gain: Medium. Scale bar, 20 µm.

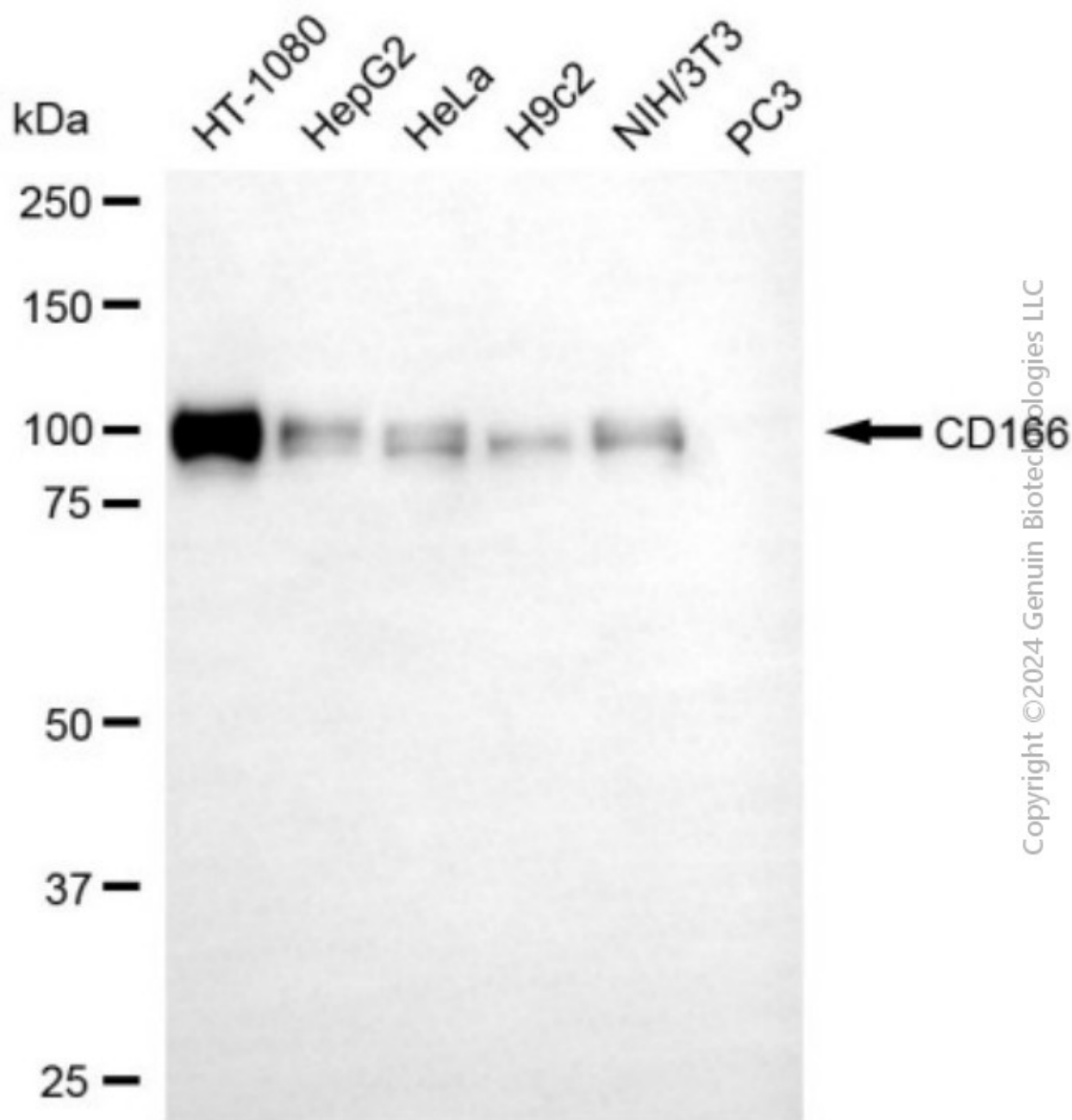
SUPPORT

SUPPORT@GENUINBIOTECH.COM
TEL: +1-540-855-7041

ORDERS

SALES@GENUINBIOTECH.COM
FAX: +1-540-855-7041

WWW.GENUINBIOTECH.COM



Western blotting analysis using anti-brain derived neurotrophic factor antibody (Cat#4073). Total cell lysates (30 µg) from various cell lines were loaded and separated by SDS-PAGE. The blot was incubated with anti-brain derived neurotrophic factor antibody (Cat#4073, 1:5,000) and HRP-conjugated goat anti-rabbit secondary antibody (Cat#201, 1:20,000) respectively. Image was developed using NaQ™ ECL Substrate Kit (Cat#716).