

# Anti-Integrin beta 3 Recombinant Rabbit Monoclonal Antibody



**Catalog #: 4075**

## Aliases

ITGB3; Integrin Subunit Beta 3; GPIIIa; CD61; GP3A; Integrin, Beta 3 (Platelet Glycoprotein IIIa, Antigen CD61); Platelet Membrane Glycoprotein IIIa; Integrin Beta-3; Antigen CD61; Integrin Beta Chain, Beta 3; Platelet Glycoprotein IIIa; Integrin Beta 3; CD61 Antigen; BDPLT16; BDPLT24; BDPLT2; GT2; GT

## Background

Gene Name: ITGB3

NCBI Gene Entry: [3690](#)

UniProt Entry: [P05106](#)

## Application Information

Molecular Weight: Predicted, 87 kDa; observed, 110 kDa

Clonality: Rabbit monoclonal antibody

Clone ID: 24GB9465

Species Reactivity: Mouse

Applications Tested: Western blotting (WB), immunocytochemistry (IC), flow cytometry (FCM)

## Immunogen

A synthesized peptide derived from human Integrin beta 3

## Isotype

Rabbit IgG

## Storage Buffer

Supplied in PBS (pH 7.4) containing 50% glycerol, and 0.02% sodium azide.

## Storage

Store at -20 °C for one year.

## Recommended Dilutions

Western Blotting (WB): 1:1,000-1:5,000

Flow Cytometry (FCM): 1:2,000

Immunocytochemistry (IC): 1:200 - 1:1,000

---

### SUPPORT

SUPPORT@GENUINBIOTECH.COM  
TEL: +1-540-855-7041

### ORDERS

SALES@GENUINBIOTECH.COM  
FAX: +1-540-855-7041

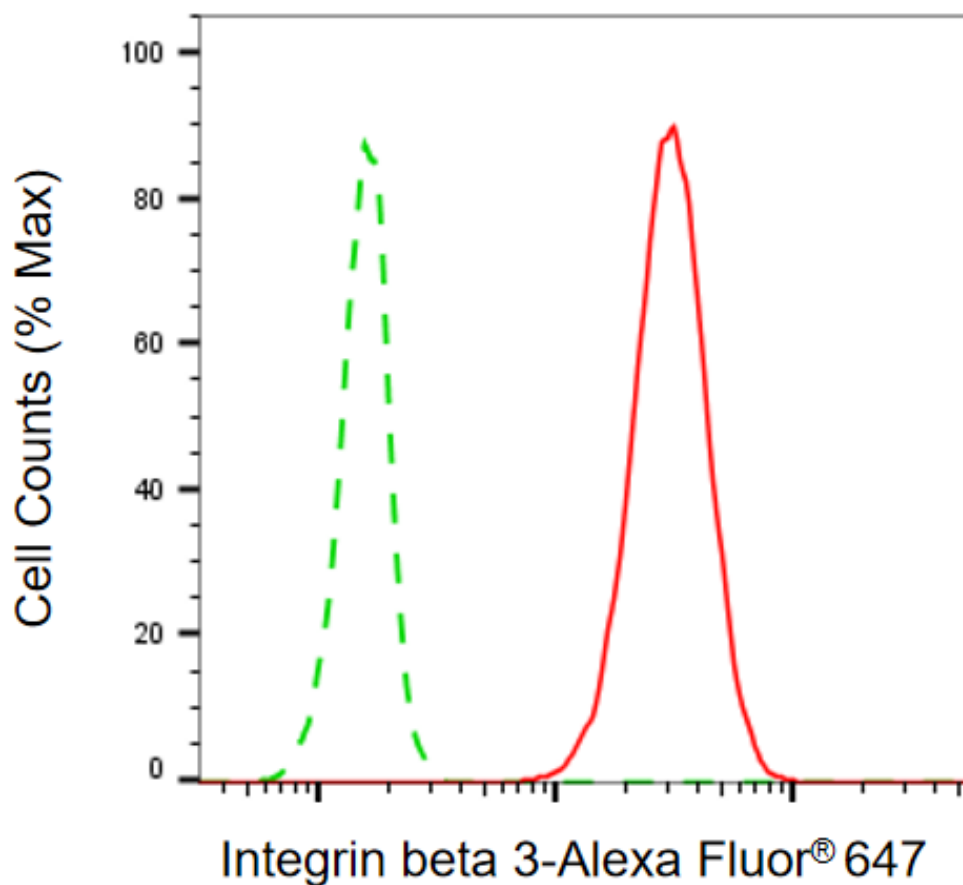
[WWW.GENUINBIOTECH.COM](http://WWW.GENUINBIOTECH.COM)

# Anti-Integrin beta 3 Recombinant Rabbit Monoclonal Antibody

PAGE 2

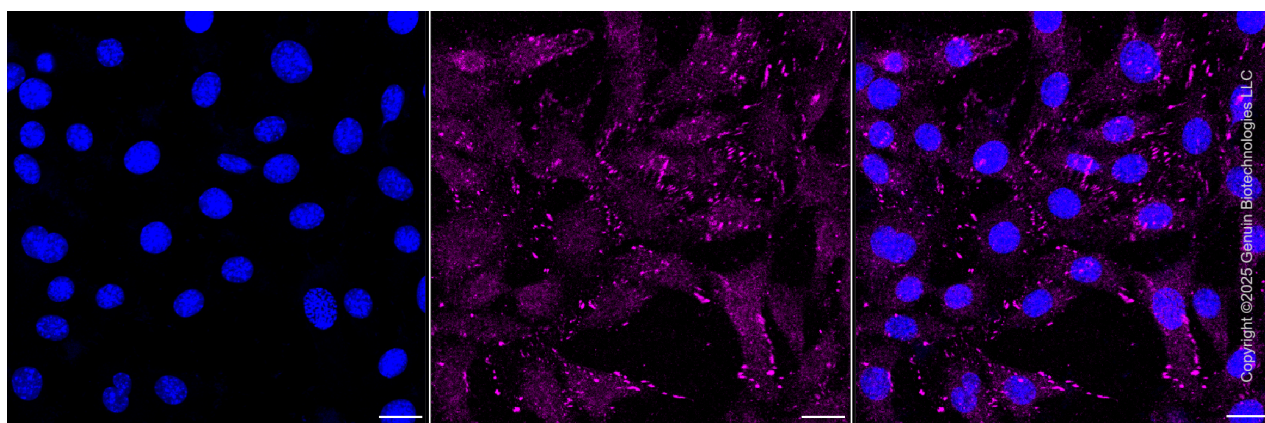
**Note:** This product is for research use only.

## Validation Data



Copyright ©2025 Genuin Biotechnologies LLC

Flow cytometric analysis of Integrin beta 3 expression in C2C12 cells using anti-Integrin beta 3 antibody (Cat#4075, 1:2,000). Green, isotype control; red, Integrin beta 3.



Copyright ©2025 Genuin Biotechnologies LLC

### SUPPORT

SUPPORT@GENUINBIOTECH.COM  
TEL: +1-540-855-7041

### ORDERS

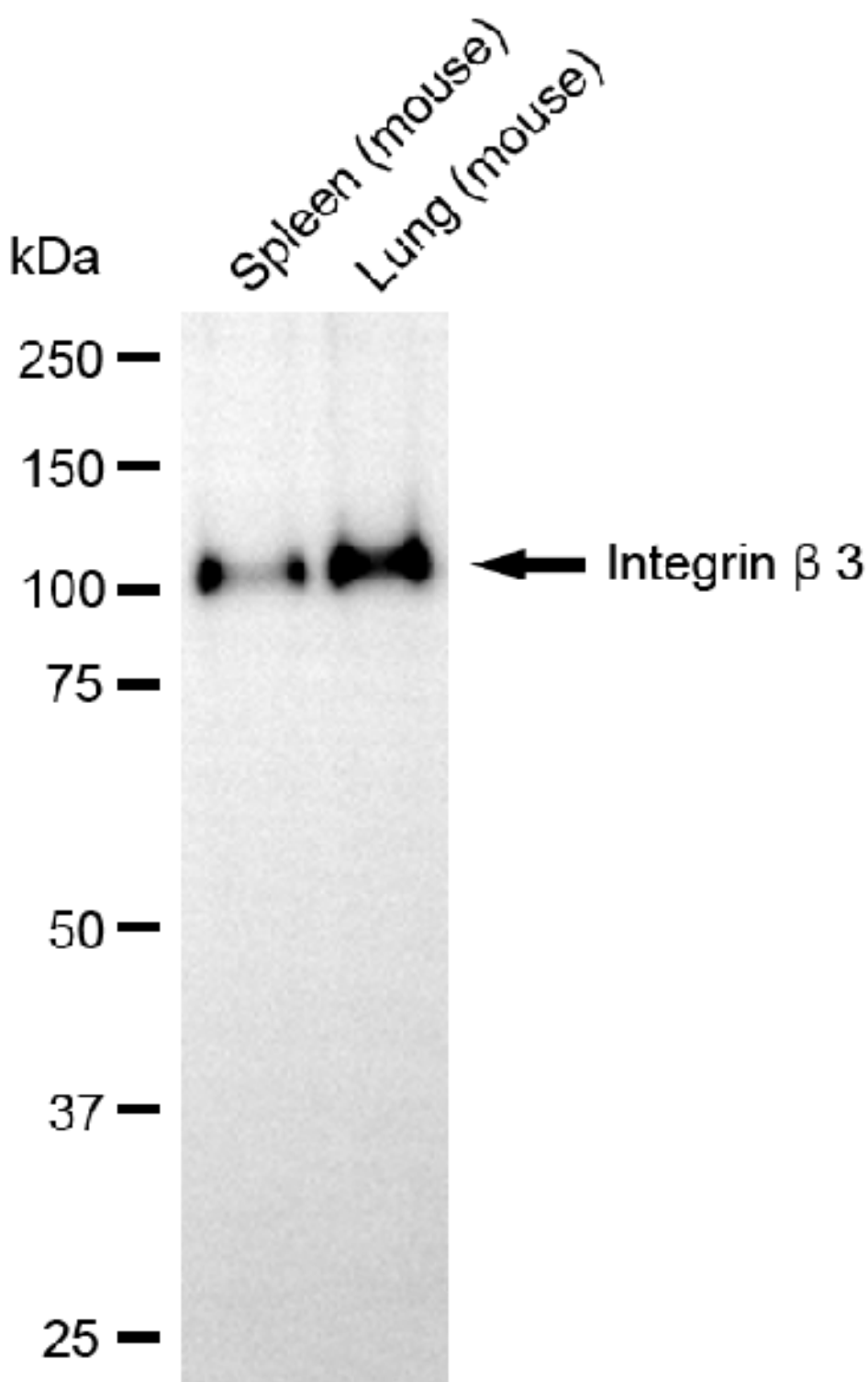
SALES@GENUINBIOTECH.COM  
FAX: +1-540-855-7041

WWW.GENUINBIOTECH.COM

## Anti-Integrin beta 3 Recombinant Rabbit Monoclonal Antibody

PAGE 3

Immunocytochemical staining of C2C12 cells with anti-Integrin beta 3 antibody (Cat#4075, 1:1,000). Nuclei were stained blue with DAPI; Integrin beta 3 was stained magenta with Alexa Fluor® 647. Images were taken using Leica stellaris 5. Protein abundance based on laser Intensity and smart gain: Medium. Scale bar, 20  $\mu$ m.



Copyright ©2025 Genuin Biotechnologies LLC

### SUPPORT

SUPPORT@GENUINBIOTECH.COM  
TEL: +1-540-855-7041

### ORDERS

SALES@GENUINBIOTECH.COM  
FAX: +1-540-855-7041

WWW.GENUINBIOTECH.COM

## **Anti-Integrin beta 3 Recombinant Rabbit Monoclonal Antibody**

PAGE 4

Western blotting analysis using anti-integrin beta 3 antibody (Cat#4075). Total cell lysates (50 µg) from various cell lines were loaded and separated by SDS-PAGE. The blot was incubated with anti-integrin beta 3 antibody (Cat#4075, 1:5,000) and HRP-conjugated goat anti-rabbit secondary antibody (Cat#201, 1:20,000) respectively. Image was developed using FeQ™ ECL Substrate Kit (Cat#226).

---

### **SUPPORT**

SUPPORT@GENUINBIOTECH.COM  
TEL: +1-540-855-7041

### **ORDERS**

SALES@GENUINBIOTECH.COM  
FAX: +1-540-855-7041

**WWW.GENUINBIOTECH.COM**