

Anti-Amyloid beta precursor protein Recombinant Rabbit Monoclonal Antibody



Catalog #: 4076

Aliases

A4; AAA; ABETA; ABPP; AD1; AICD-50; AICD-57; AICD-59; AID(50); AID(57); AID(59); amyloid beta (A4) precursor protein; Amyloid beta A4 protein; CTFgamma ; PN 2;CD31; CVAP; APP

Background

Gene Name: APP

NCBI Gene Entry: [351](#)

UniProt Entry: [P05067](#)

Application Information

Molecular Weight: Predicted, 87 kDa; observed, 110 kDa

Clonality: Rabbit monoclonal antibody

Clone ID: 24GB9470

Species Reactivity: Human, mouse, rat

Applications Tested: Western blotting (WB), flow cytometry (FCM), immunocytochemistry (IC)

Immunogen

A synthesized peptide derived from human Amyloid beta A4

Isotype

Rabbit IgG

Storage Buffer

Supplied in PBS (pH 7.4) containing 50% glycerol, and 0.02% sodium azide.

Storage

Store at -20 °C for one year.

Recommended Dilutions

Western Blotting (WB): 1:1,000-1:5,000

Flow Cytometry (FCM): 1:2,000

Immunocytochemistry (IC): 1:100-1:1,000

Note: This product is for research use only.

SUPPORT

SUPPORT@GENUINBIOTECH.COM
TEL: +1-540-855-7041

ORDERS

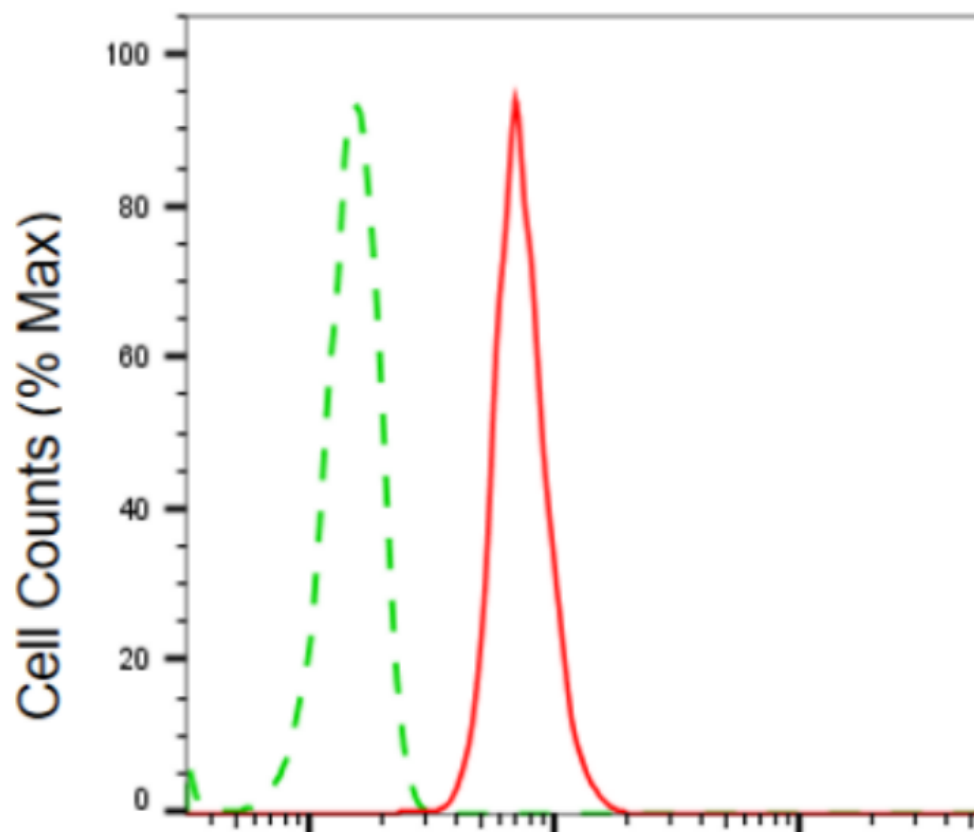
SALES@GENUINBIOTECH.COM
FAX: +1-540-855-7041

WWW.GENUINBIOTECH.COM

Anti-Amyloid beta precursor protein Recombinant Rabbit Monoclonal Antibody

PAGE 2

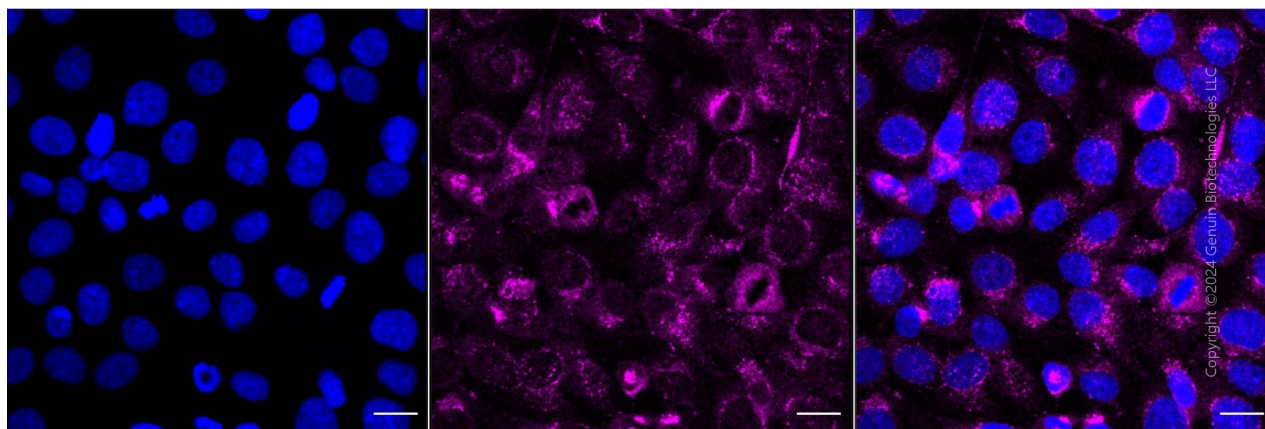
Validation Data



Copyright ©2024 Genuin Biotechnologies LLC

Amyloid beta precursor protein-Alexa Fluor® 647

Flow cytometric analysis of amyloid beta precursor protein expression in HT-1080 cells using anti-amyloid beta precursor protein antibody (Cat#4076, 1:2,000). Green, isotype control; red, amyloid beta precursor protein.



Copyright ©2024 Genuin Biotechnologies LLC

Immunocytochemical staining of HT-1080 cells with anti-Amyloid beta precursor protein antibody

SUPPORT

SUPPORT@GENUINBIOTECH.COM
TEL: +1-540-855-7041

ORDERS

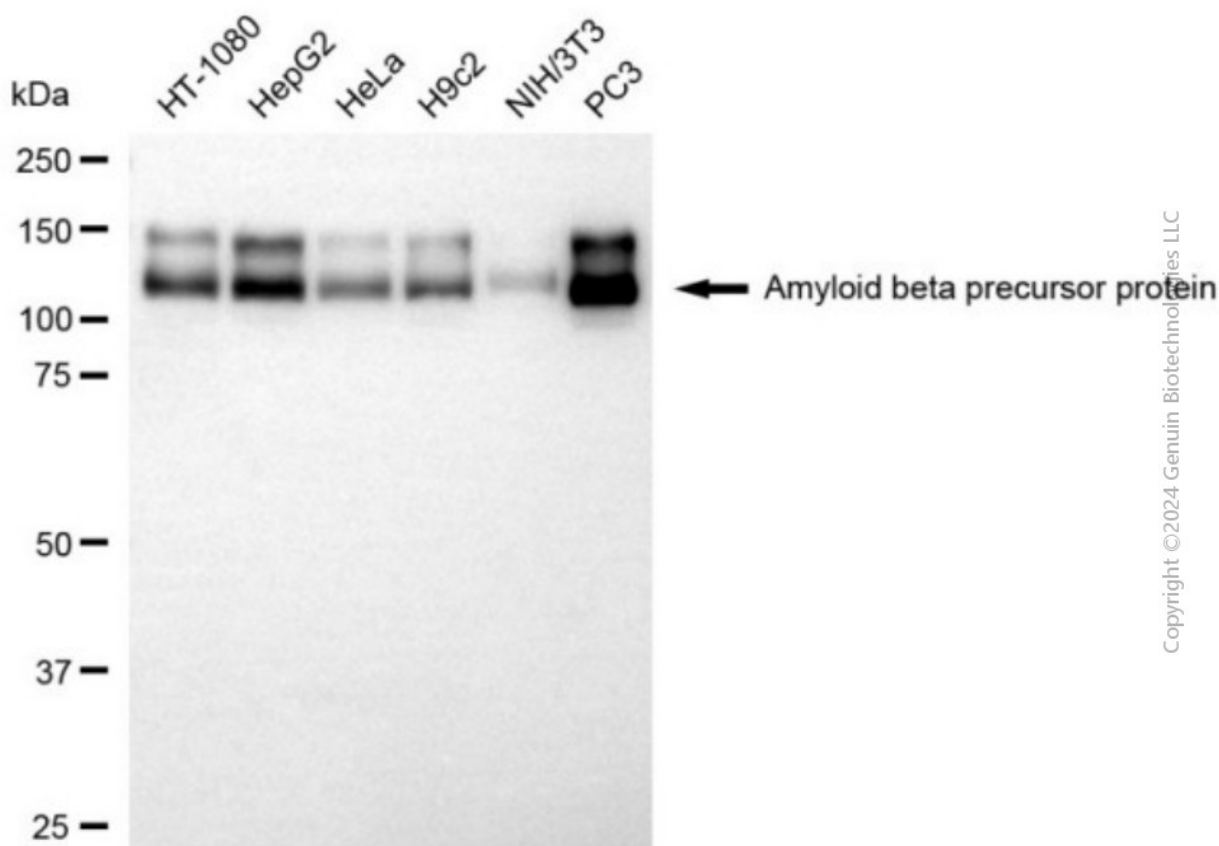
SALES@GENUINBIOTECH.COM
FAX: +1-540-855-7041

WWW.GENUINBIOTECH.COM

Anti-Amyloid beta precursor protein Recombinant Rabbit Monoclonal Antibody

PAGE 3

(Cat#4076, 1:1,000). Nuclei were stained blue with DAPI; Amyloid beta precursor protein was stained magenta with Alexa Fluor® 647. Images were taken using Leica stellaris 5. Protein abundance based on laser Intensity and smart gain: Medium. Scale bar, 20 μ m.



Western blotting analysis using anti-amyloid beta precursor protein antibody (Cat#4076). Total cell lysates (30 μ g) from various cell lines were loaded and separated by SDS-PAGE. The blot was incubated with anti-amyloid beta precursor protein antibody (Cat#4076, 1:5,000) and HRP-conjugated goat anti-rabbit secondary antibody (Cat#201, 1:20,000) respectively. Image was developed using NaQ™ ECL Substrate Kit (Cat#716).

SUPPORT

SUPPORT@GENUINBIOTECH.COM
TEL: +1-540-855-7041

ORDERS

SALES@GENUINBIOTECH.COM
FAX: +1-540-855-7041

WWW.GENUINBIOTECH.COM