

Anti-Stat3 Recombinant Rabbit Monoclonal Antibody



Catalog #: 4086

Aliases

Signal Transducer And Activator Of Transcription 3; APRF; Acute-Phase Response Factor; Signal Transducer And Activator Of Transcription 3 (Acute-Phase Response Factor); DNA-Binding Protein APRF; ADMIO1; ADMIO; HIES

Background

Gene Name: STAT3

NCBI Gene Entry: [6774](#)

UniProt Entry: [P40763](#)

Application Information

Molecular Weight: Predicted, 88 kDa; observed, 88 kDa

Clonality: Rabbit monoclonal antibody

Clone ID: 24GB9520

Species Reactivity: Human, mouse, rat

Applications Tested: Western blotting (WB), flow cytometry (FCM)

Immunogen

A synthesized peptide derived from human beta STAT3

Isotype

Rabbit IgG

Storage Buffer

Supplied in PBS (pH 7.4) containing 50% glycerol, and 0.02% sodium azide.

Storage

Store at -20 °C for one year.

Recommended Dilutions

Western Blotting (WB): 1:1,000-1:5,000

Flow Cytometry (FCM): 1:2,000

Note: This product is for research use only.

Validation Data

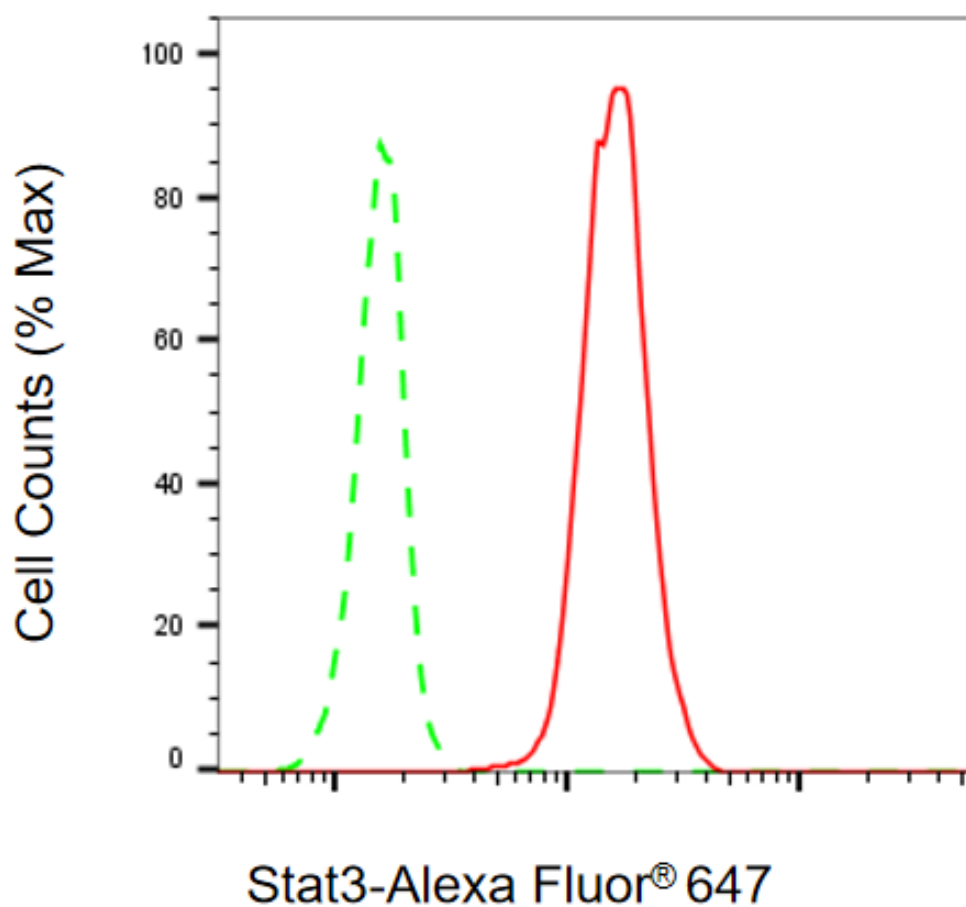
SUPPORT

SUPPORT@GENUINBIOTECH.COM
TEL: +1-540-855-7041

ORDERS

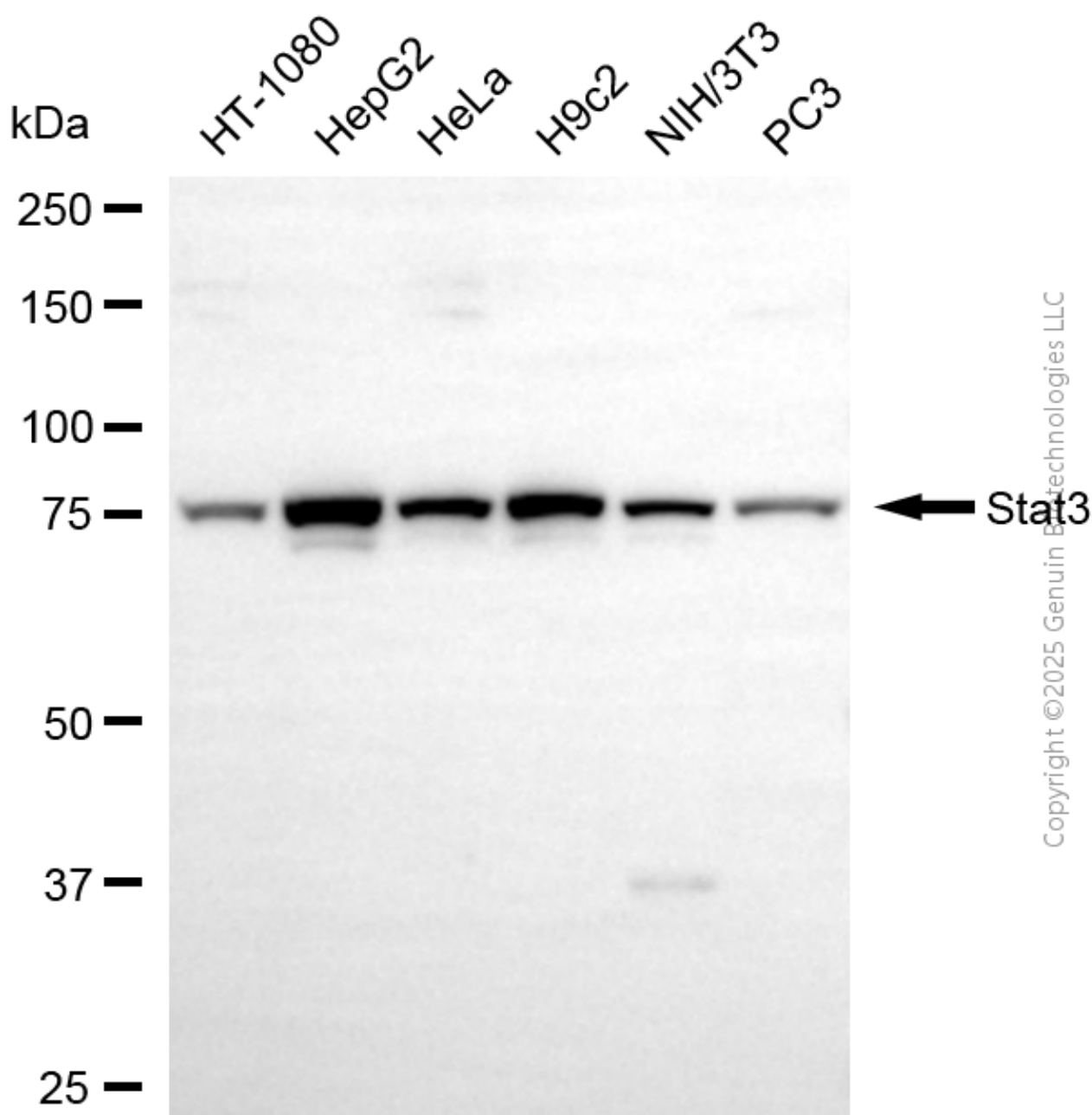
SALES@GENUINBIOTECH.COM
FAX: +1-540-855-7041

WWW.GENUINBIOTECH.COM



Copyright ©2025 Genuin Biotechnologies LLC

Flow cytometric analysis of Stat3 expression in C2C12 cells using anti-Stat3 antibody (Cat#4086, 1:2,000). Green, isotype control; red, Stat3.



Western blotting analysis using anti-stat3 antibody (Cat#4086). Total cell lysates (30 μ g) from various cell lines were loaded and separated by SDS-PAGE. The blot was incubated with anti-stat3 antibody (Cat#4086, 1:5,000) and HRP-conjugated goat anti-rabbit secondary antibody (Cat#201, 1:20,000) respectively. Image was developed using NaQ™ ECL Substrate Kit (Cat#716).