

# Anti-TCEB2 Recombinant Rabbit Monoclonal Antibody



**Catalog #: 4089**

## Aliases

ELOB; Elongin B; TCEB2; SIII; Transcription Elongation Factor B (SIII), Polypeptide 2 (18kDa, Elongin B); RNA Polymerase II Transcription Factor SIII Subunit B; Transcription Elongation Factor B Polypeptide; Transcription Elongation Factor B Subunit 2; Elongin 18 KDa Subunit; Elongin-B; SIII P18; RNA Polymerase II Transcription Factor SIII P18 Subunit; Epididymis Secretory Sperm Binding Protein; Elongin, 18-KD Subunit; EloB

## Background

Gene Name: ELOB

NCBI Gene Entry: [6923](#)

UniProt Entry: [Q15370](#)

## Application Information

Molecular Weight: Predicted, 13 kDa; observed, 16 kDa

Clonality: Rabbit monoclonal antibody

Clone ID: 24GB9535

Species Reactivity: Human, rat

Applications Tested: Western blotting (WB), flow cytometry (FCM), immunocytochemistry (IC)

## Immunogen

A synthesized peptide derived from human TCEB2

## Isotype

Rabbit IgG

## Storage Buffer

Supplied in PBS (pH 7.4) containing 50% glycerol, and 0.02% sodium azide.

## Storage

Store at -20 °C for one year.

## Recommended Dilutions

Western Blotting (WB): 1:1,000-1:5,000

Flow Cytometry (FCM): 1:2,000

Immunocytochemistry (IC): 1:100-1:1,000

---

### SUPPORT

SUPPORT@GENUINBIOTECH.COM  
TEL: +1-540-855-7041

### ORDERS

SALES@GENUINBIOTECH.COM  
FAX: +1-540-855-7041

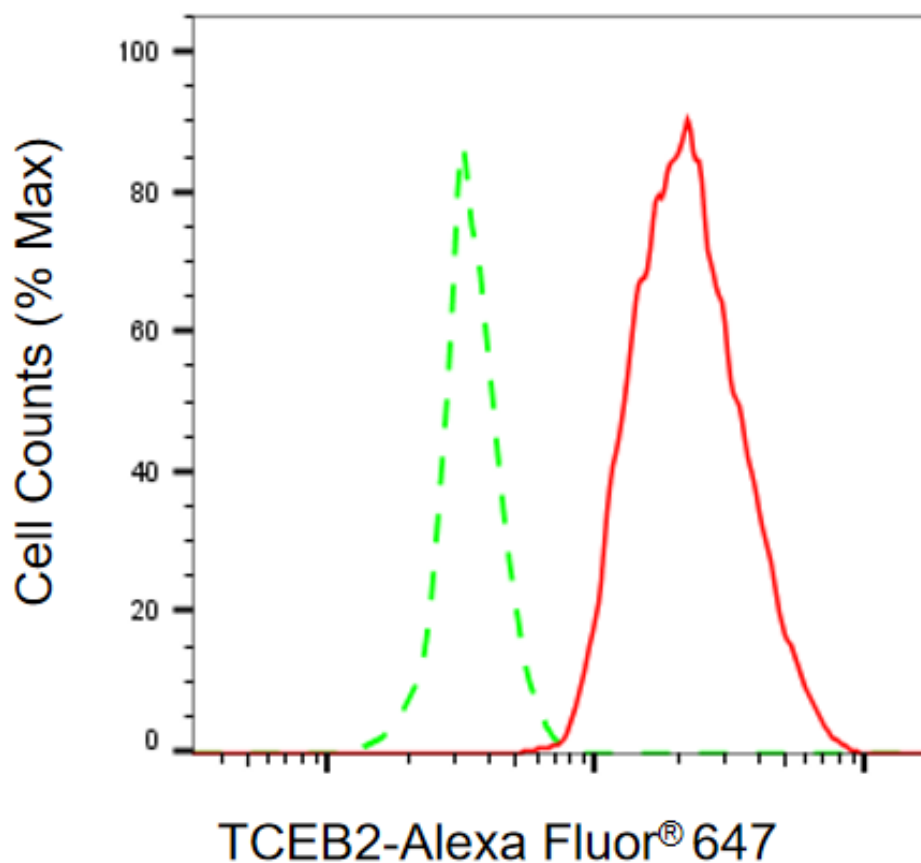
[WWW.GENUINBIOTECH.COM](http://WWW.GENUINBIOTECH.COM)

# Anti-TCEB2 Recombinant Rabbit Monoclonal Antibody

PAGE 2

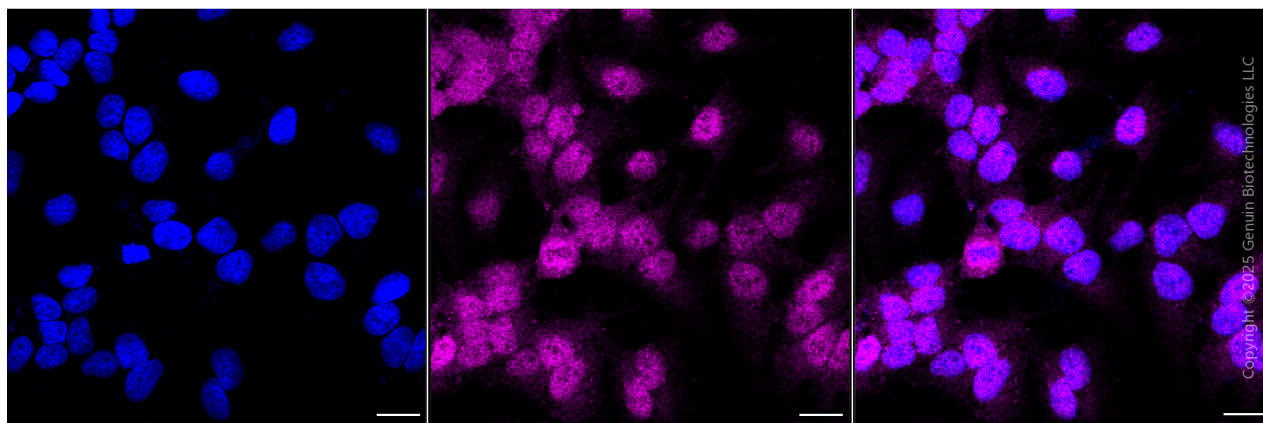
**Note:** This product is for research use only.

## Validation Data



Copyright ©2025 Genuin Biotechnologies LLC

Flow cytometric analysis of TCEB2 expression in HeLa cells using anti-TCEB2 antibody (Cat#4089, 1:2,000). Green, isotype control; red, TCEB2.



Copyright ©2025 Genuin Biotechnologies LLC

Immunocytochemical staining of HeLa cells with anti-TCEB2 antibody (Cat#4089, 1:1,000) .

### SUPPORT

SUPPORT@GENUINBIOTECH.COM  
TEL: +1-540-855-7041

### ORDERS

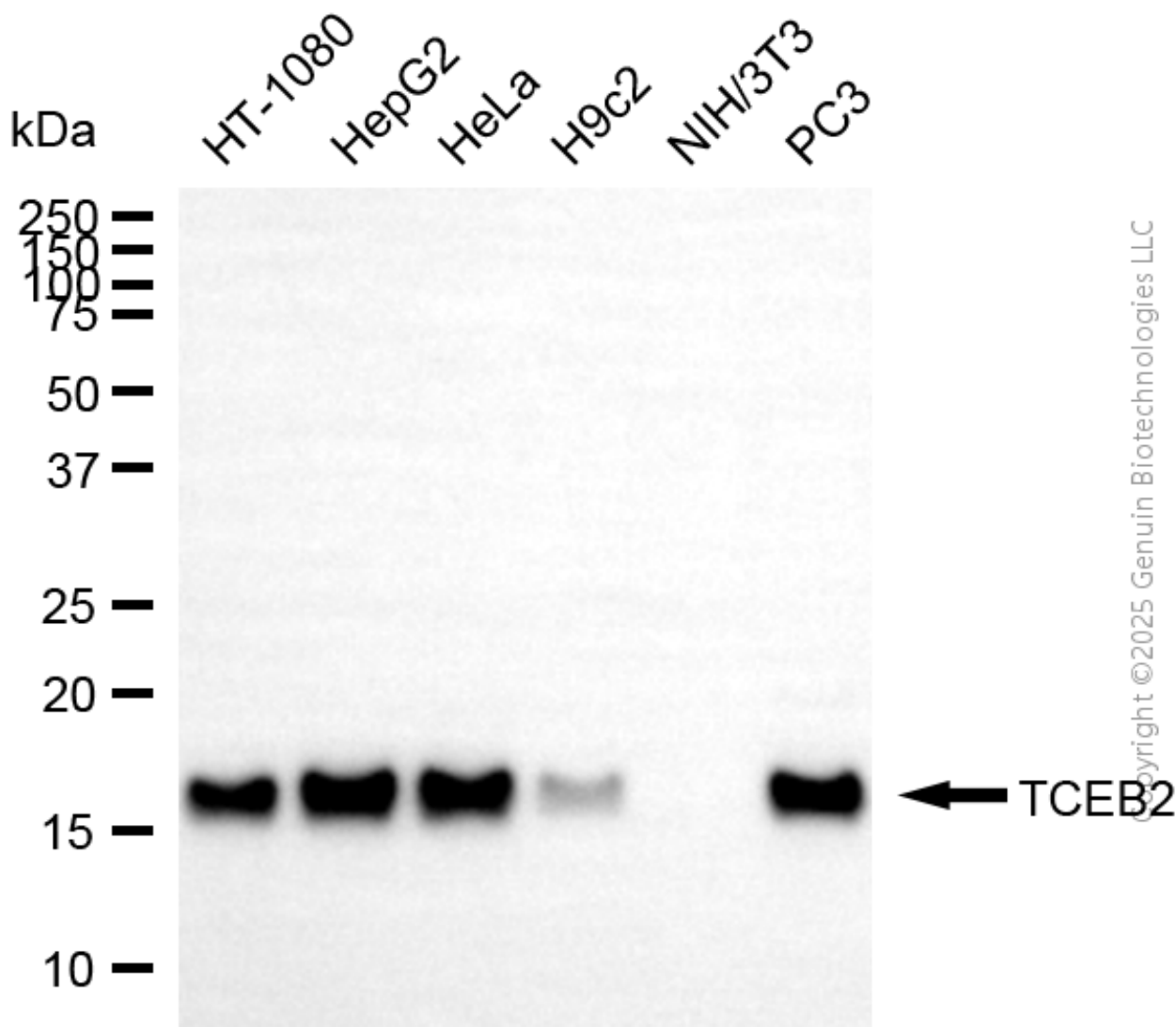
SALES@GENUINBIOTECH.COM  
FAX: +1-540-855-7041

WWW.GENUINBIOTECH.COM

## Anti-TCEB2 Recombinant Rabbit Monoclonal Antibody

PAGE 3

Nuclei were stained blue with DAPI; TCEB2 was stained magenta with Alexa Fluor® 647. Images were taken using Leica stellaris 5. Protein abundance based on laser Intensity and smart gain: Medium. Scale bar, 20  $\mu$ m.



Western blotting analysis using anti-TCEB2 antibody (Cat#4089). Total cell lysates (30  $\mu$ g) from various cell lines were loaded and separated by SDS-PAGE. The blot was incubated with anti-TCEB2 antibody (Cat#4089, 1:5,000) and HRP-conjugated goat anti-rabbit secondary antibody (Cat#201, 1:20,000) respectively. Image was developed using NaQ™ ECL Substrate Kit (Cat#716).

### SUPPORT

SUPPORT@GENUINBIOTECH.COM  
TEL: +1-540-855-7041

### ORDERS

SALES@GENUINBIOTECH.COM  
FAX: +1-540-855-7041

WWW.GENUINBIOTECH.COM