

Anti-Glutamate-ammonia ligase Recombinant Rabbit Monoclonal Antibody



Catalog #: 4096

Aliases

GLUL; Glutamate-Ammonia Ligase; Glutamine Synthetase; GLNS; Palmitoyltransferase GLUL; EC 6.3.1.2; GS; Glutamate-Ammonia Ligase (Glutamine Synthase); Cell Proliferation-Inducing Protein 59; Proliferation-Inducing Protein 43; Glutamate--Ammonia Ligase; Glutamate Decarboxylase; Glutamine Synthase; EC 2.3.1.225; DEE116; PIG43; PIG59

Background

Gene Name: GLUL

NCBI Gene Entry: [2752](#)

UniProt Entry: [P15104](#)

Application Information

Molecular Weight: Predicted, 42 kDa; observed, 42 kDa

Clonality: Rabbit monoclonal antibody

Clone ID: 24GB9570

Species Reactivity: Human, mouse, rat

Applications Tested: Western blotting (WB), flow cytometry (FCM)

Immunogen

A synthesized peptide derived from human Glutamine synthetase

Isotype

Rabbit IgG

Storage Buffer

Supplied in PBS (pH 7.4) containing 50% glycerol, and 0.02% sodium azide.

Storage

Store at -20 °C for one year.

Recommended Dilutions

Western Blotting (WB): 1:1,000-1:5,000

Flow Cytometry (FCM): 1:2,000

Note: This product is for research use only.

SUPPORT

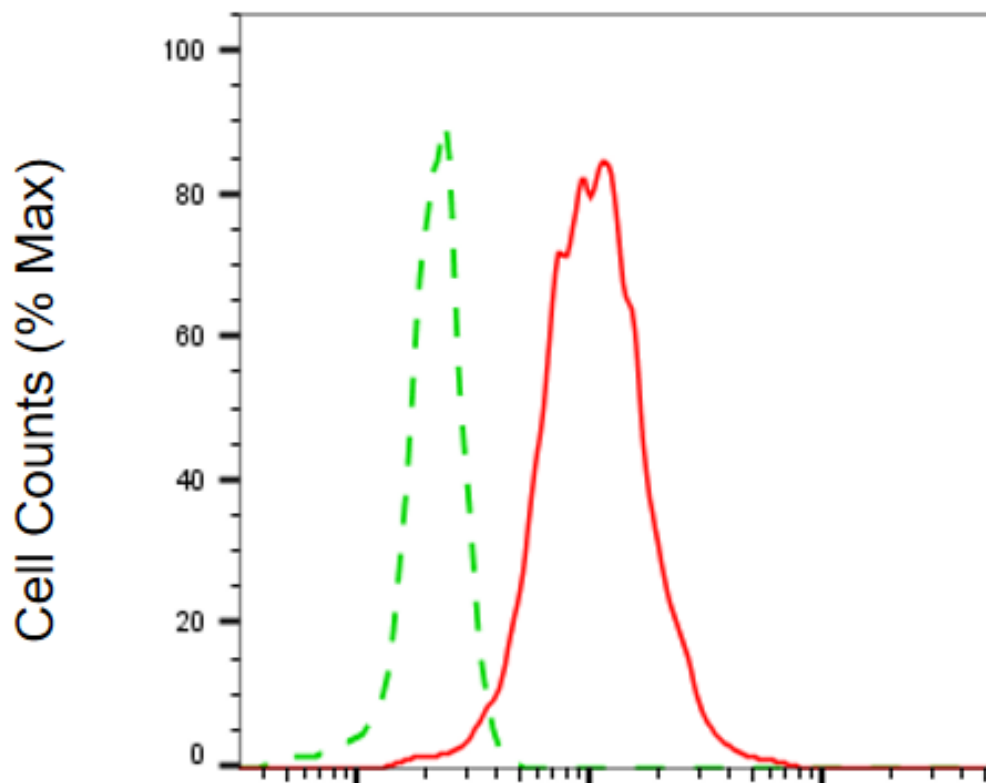
SUPPORT@GENUINBIOTECH.COM
TEL: +1-540-855-7041

ORDERS

SALES@GENUINBIOTECH.COM
FAX: +1-540-855-7041

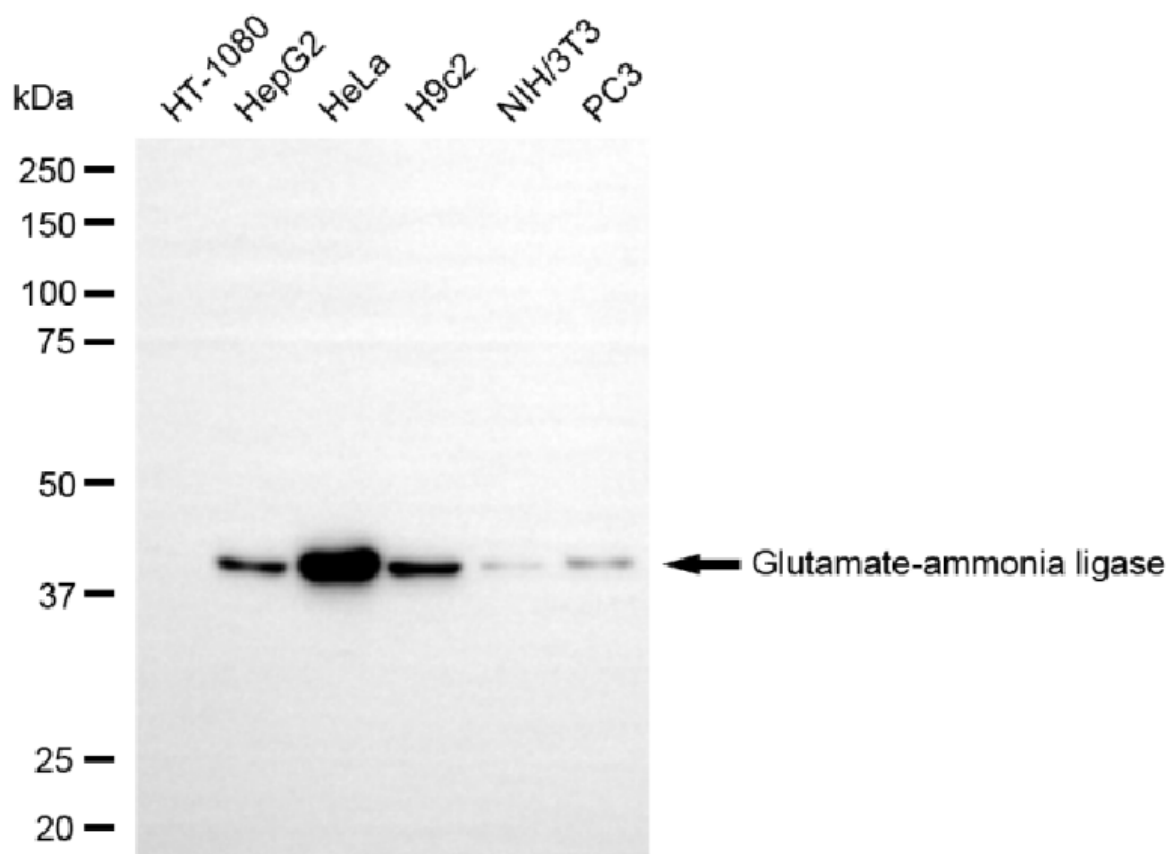
WWW.GENUINBIOTECH.COM

Validation Data



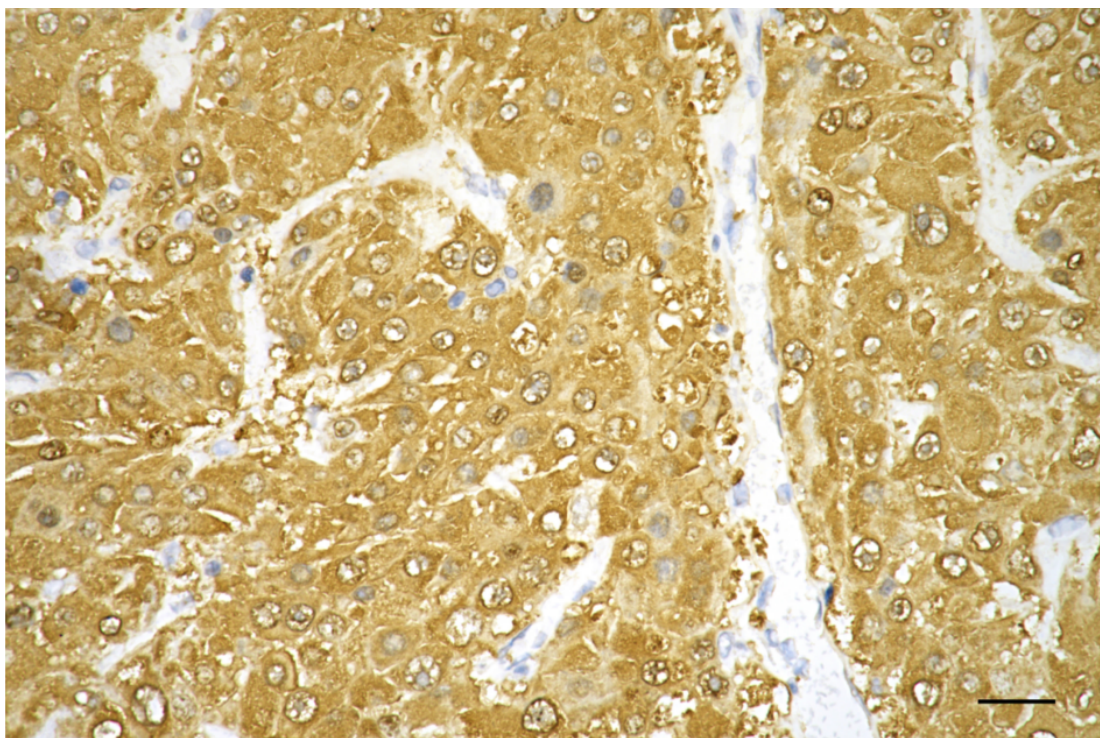
Glutamate-ammonia ligase-Alexa Fluor® 647

Flow cytometric analysis of Glutamate-ammonia ligase expression in HeLa cells using anti-Glutamate-ammonia ligase antibody (Cat#4096, 1:2,000). Green, isotype control; red, Glutamate-ammonia ligase.



Copyright ©2025 Genuin Biotechnologies LLC

Western blotting analysis using anti-glutamate-ammonia ligase antibody (Cat#4096). Total cell lysates (30 μ g) from various cell lines were loaded and separated by SDS-PAGE. The blot was incubated with anti-glutamate-ammonia ligase antibody (Cat#4096, 1:5,000) and HRP-conjugated goat anti-rabbit secondary antibody (Cat#201, 1:20,000) respectively. Image was developed using NaQ™ ECL Substrate Kit (Cat#716).



Copyright ©2025 Genuin Biotechnologies LLC

Immunohistochemistry was performed on paraffin-embedded human hepatocarcinoma using anti-Glutamate-ammonia ligase antibody (Cat#4096, 1:200). Antigen retrieval was done in sodium citrate buffer (pH 6.0). DAB was used for detection, with hematoxylin counterstaining. Images were acquired using a Nikon Ci-L Plus microscope (40× objective). Scale bar: 25 μ m.