

# Anti-Trophoblast Glycoprotein Recombinant Rabbit Monoclonal Antibody



**Catalog #: 4099**

## Aliases

TPBG; Trophoblast Glycoprotein; 5T4; 5T4 Oncofetal Trophoblast Glycoprotein; Wnt-Activated Inhibitory Factor 1; 5T4 Oncotrophoblast Glycoprotein; 5T4 Oncofetal Antigen; 5T4-AG; WAIF1; M6P1; 5T4AG

## Background

Gene Name: TPBG

NCBI Gene Entry: [7162](#)

UniProt Entry: [Q13641](#)

## Application Information

Molecular Weight: Predicted, 46 kDa; observed, 72 kDa

Clonality: Rabbit monoclonal antibody

Clone ID: 24GB9585

Species Reactivity: Human, mouse, rat

Applications Tested: Western blotting (WB), flow cytometry (FCM), immunocytochemistry (IC)

## Immunogen

A synthesized peptide derived from human 5T4

## Isotype

Rabbit IgG

## Storage Buffer

Supplied in PBS (pH 7.4) containing 50% glycerol, and 0.02% sodium azide.

## Storage

Store at -20 °C for one year.

## Recommended Dilutions

Western Blotting (WB): 1:1,000-1:5,000

Flow Cytometry (FCM): 1:2,000

Immunocytochemistry (IC): 1:100-1:1,000

**Note:** This product is for research use only.

---

### SUPPORT

SUPPORT@GENUINBIOTECH.COM  
TEL: +1-540-855-7041

### ORDERS

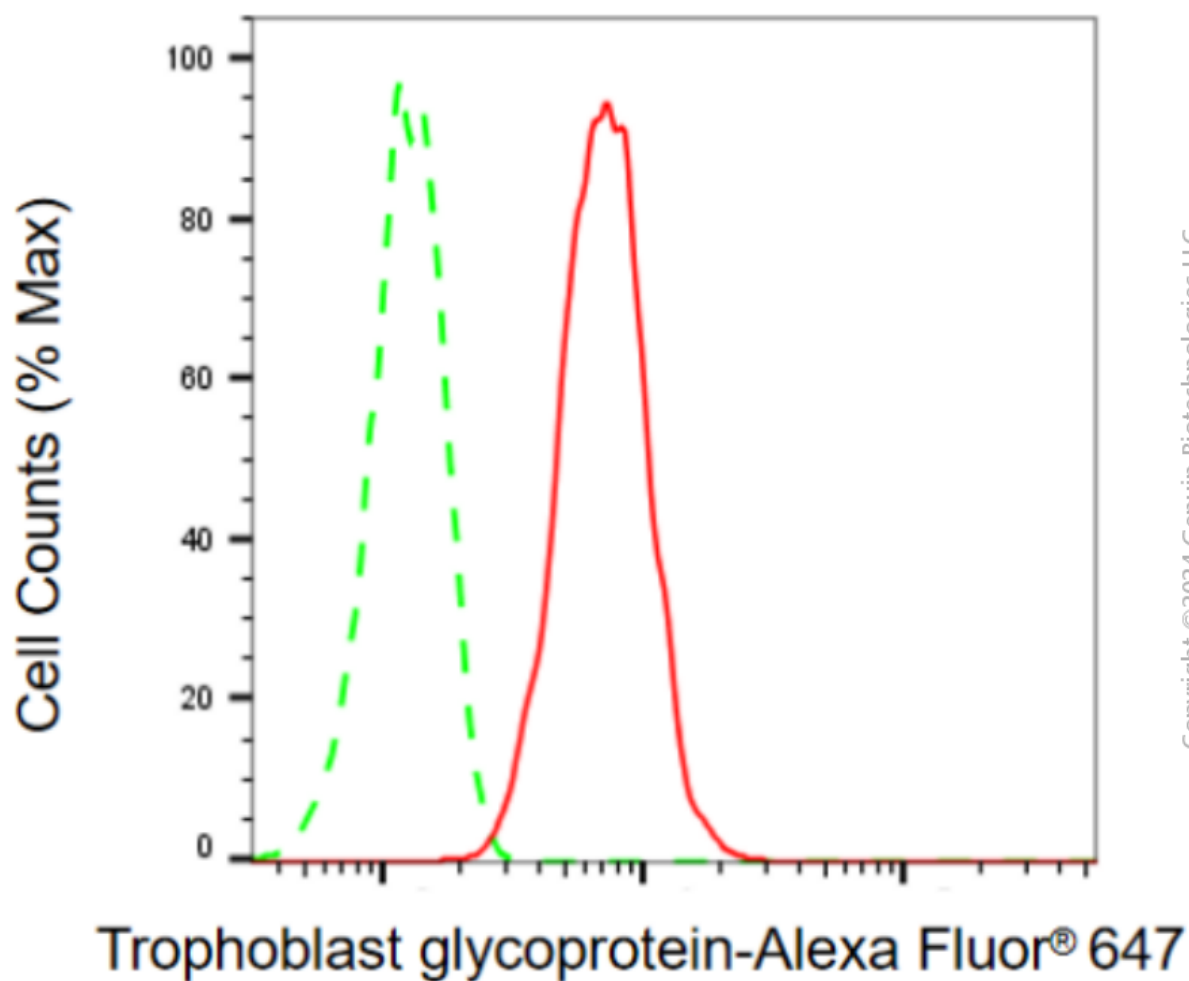
SALES@GENUINBIOTECH.COM  
FAX: +1-540-855-7041

[WWW.GENUINBIOTECH.COM](http://WWW.GENUINBIOTECH.COM)

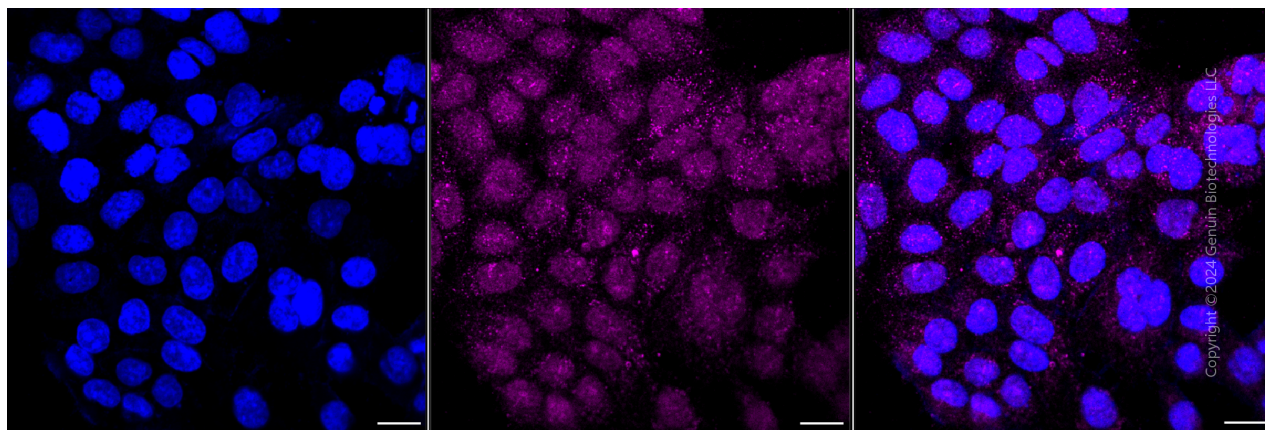
# Anti-Trophoblast Glycoprotein Recombinant Rabbit Monoclonal Antibody

PAGE 2

## Validation Data



Flow cytometric analysis of trophoblast glycoprotein expression in HAP-1 cells using anti-trophoblast glycoprotein antibody (Cat#4099, 1:2,000). Green, isotype control; red, trophoblast glycoprotein.



### SUPPORT

SUPPORT@GENUINBIOTECH.COM  
TEL: +1-540-855-7041

### ORDERS

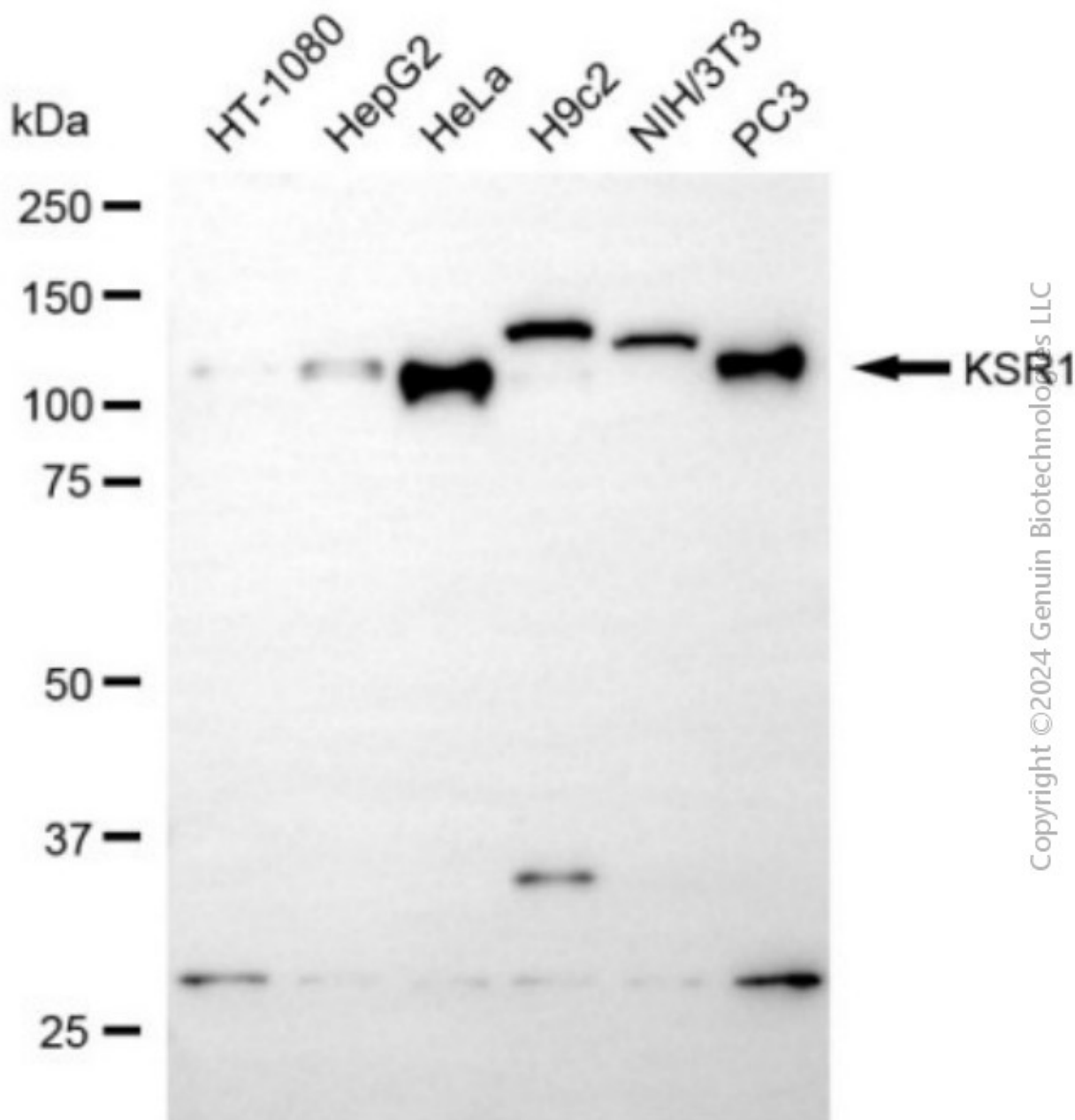
SALES@GENUINBIOTECH.COM  
FAX: +1-540-855-7041

WWW.GENUINBIOTECH.COM

## Anti-Trophoblast Glycoprotein Recombinant Rabbit Monoclonal Antibody

PAGE 3

Immunocytochemical staining of HAP-1 with anti-Trophoblast glycoprotein antibody (Cat#4099, 1:1,000). Nuclei were stained blue with DAPI; Trophoblast glycoprotein was stained magenta with Alexa Fluor® 647. Images were taken using Leica stellaris 5. Protein abundance based on laser Intensity and smart gain: Medium . Scale bar, 20  $\mu$ m.



Western blotting analysis using anti-trophoblast glycoprotein antibody (Cat#4099). Total cell lysates (30  $\mu$ g) from various cell lines were loaded and separated by SDS-PAGE. The blot was incubated with anti-trophoblast glycoprotein antibody (Cat#4099, 1:5,000) and HRP-conjugated goat anti-rabbit secondary antibody (Cat#201, 1:20,000) respectively. Image was developed using NaQ™ ECL Substrate Kit (Cat#716).

### SUPPORT

SUPPORT@GENUINBIOTECH.COM  
TEL: +1-540-855-7041

### ORDERS

SALES@GENUINBIOTECH.COM  
FAX: +1-540-855-7041

WWW.GENUINBIOTECH.COM

# **Anti-Trophoblast Glycoprotein Recombinant Rabbit Monoclonal Antibody**

PAGE 4

---

## **SUPPORT**

SUPPORT@GENUINBIOTECH.COM  
TEL: +1-540-855-7041

## **ORDERS**

SALES@GENUINBIOTECH.COM  
FAX:+1-540-855-7041

**[WWW.GENUINBIOTECH.COM](http://WWW.GENUINBIOTECH.COM)**