

Anti-beta 2 Microglobulin Recombinant Rabbit Monoclonal Antibody



Catalog #: 4102

Aliases

B2M; Beta-2-Microglobulin; Beta Chain Of MHC Class I Molecules; Beta-2-Microglobin; IMD43

Background

Gene Name: B2M

NCBI Gene Entry: [567](#)

UniProt Entry: [P61769](#)

Application Information

Molecular Weight: Predicted, 14 kDa; observed, 14 kDa

Clonality: Rabbit monoclonal antibody

Clone ID: 24GB9600

Species Reactivity: Human, mouse, rat

Applications Tested: Western blotting (WB), immunocytochemistry (IC)

Immunogen

A synthesized peptide derived from human beta 2 Microglobulin

Isotype

Rabbit IgG

Storage Buffer

Supplied in PBS (pH 7.4) containing 50% glycerol, and 0.02% sodium azide.

Storage

Store at -20 °C for one year.

Recommended Dilutions

Western Blotting (WB): 1:1,000-1:5,000

Immunocytochemistry (IC): 1:100-1:1,000

Note: This product is for research use only.

Validation Data

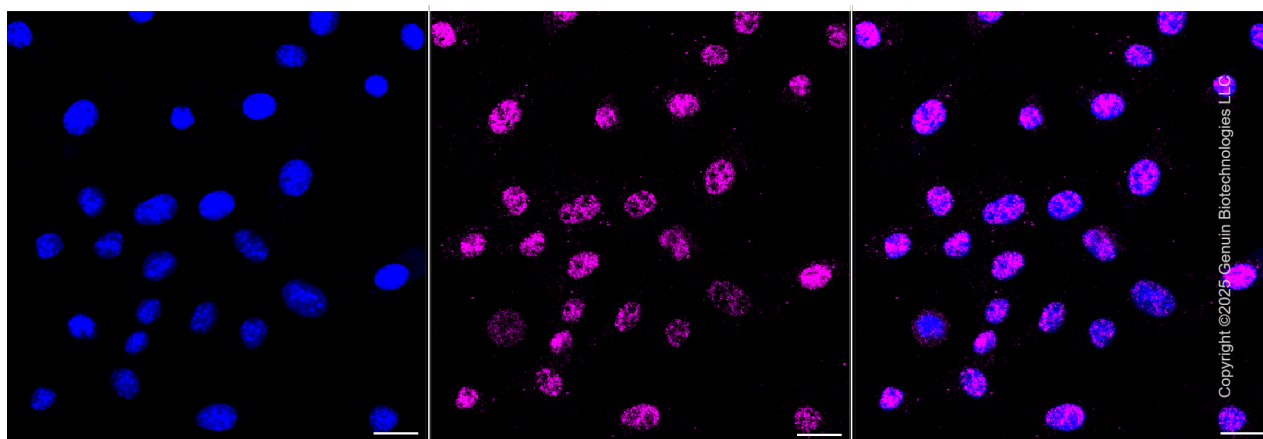
SUPPORT

SUPPORT@GENUINBIOTECH.COM
TEL: +1-540-855-7041

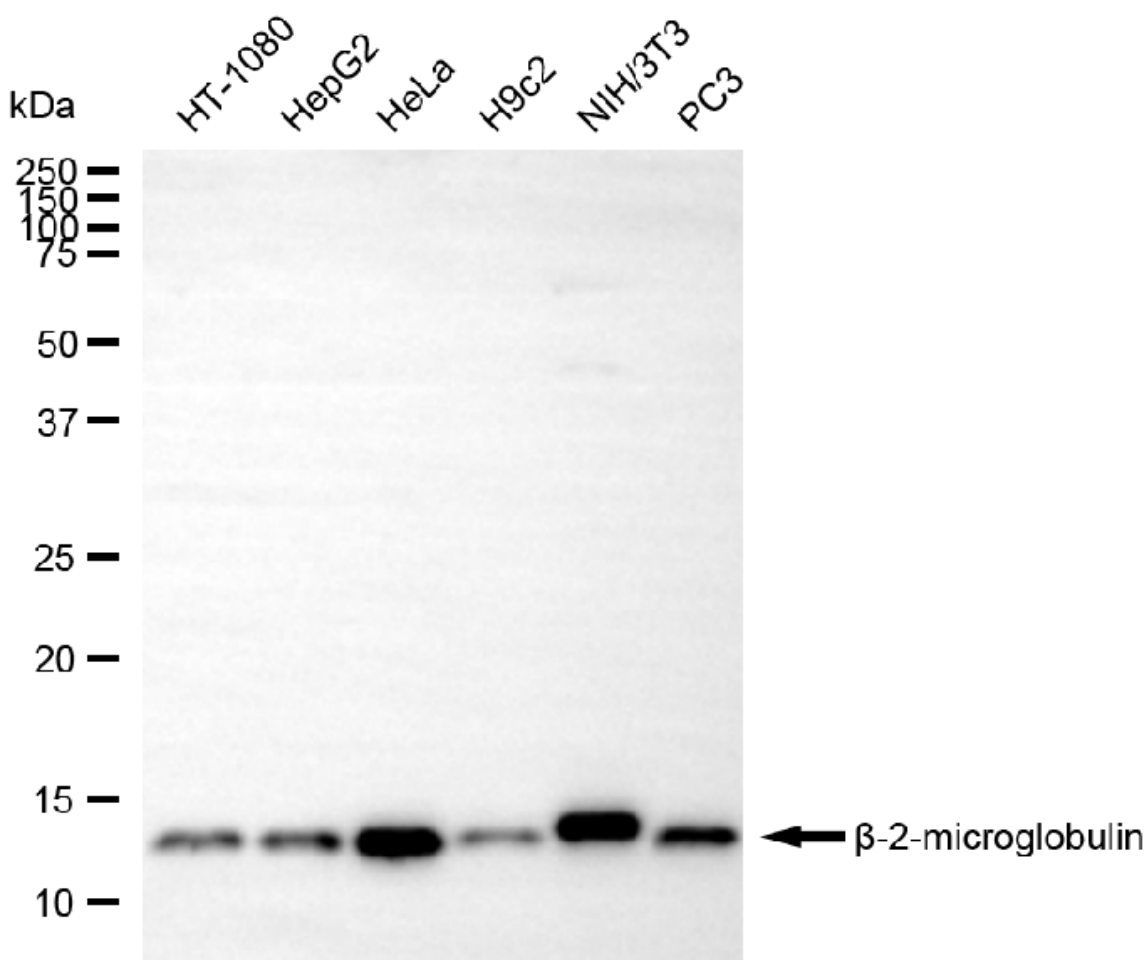
ORDERS

SALES@GENUINBIOTECH.COM
FAX: +1-540-855-7041

WWW.GENUINBIOTECH.COM



Immunocytochemical staining of C2C12 cells with anti-beta-2-microglobulin antibody (Cat#4102, 1:1,000) . Nuclei were stained blue with anti-DAPI; beta-2-microglobulin was stained magenta with Alexa Fluor® 647. Images were taken using Leica stellaris 5. Protein abundance based on laser Intensity and smart gain: Low. Scale bar, 20 μ m.



Western blotting analysis using anti-beta-2-microglobulin antibody (Cat#4102). Total cell lysates (30 μ g) from various cell lines were loaded and separated by SDS-PAGE. The blot was incubated

Anti-beta 2 Microglobulin Recombinant Rabbit Monoclonal Antibody

PAGE 3

with anti-beta-2-microglobulin antibody (Cat#4102, 1:5,000) and HRP-conjugated goat anti-rabbit secondary antibody (Cat#201, 1:20,000) respectively. Image was developed using NaQ™ ECL Substrate Kit (Cat#716).

SUPPORT

SUPPORT@GENUINBIOTECH.COM
TEL: +1-540-855-7041

ORDERS

SALES@GENUINBIOTECH.COM
FAX: +1-540-855-7041

WWW.GENUINBIOTECH.COM