

Anti-Cathepsin D Recombinant Rabbit Monoclonal Antibody



Catalog #: 4103

Aliases

CTSD; Cathepsin D; CLN10; CPSD; Ceroid-Lipofuscinosis, Neuronal 10; EC 3.4.23.5; Epididymis Secretory Sperm Binding Protein Li 130P; Cathepsin D (Lysosomal Aspartyl Protease); Lysosomal Aspartyl Peptidase; Lysosomal Aspartyl Protease; HEL-S-130P; EC 3.4.23

Background

Gene Name: CTSD

NCBI Gene Entry: [1509](#)

UniProt Entry: [P07339](#)

Application Information

Molecular Weight: Predicted, 45 kDa; observed, 46,28 kDa

Clonality: Rabbit monoclonal antibody

Clone ID: 24GB9605

Species Reactivity: Human, mouse

Applications Tested: Western blotting (WB), flow cytometry (FCM)

Immunogen

A synthesized peptide derived from human Cathepsin D

Isotype

Rabbit IgG

Storage Buffer

Supplied in PBS (pH 7.4) containing 50% glycerol, and 0.02% sodium azide.

Storage

Store at -20 °C for one year.

Recommended Dilutions

Western Blotting (WB): 1:1,000-1:5,000

Flow Cytometry (FCM): 1:2,000

Note: This product is for research use only.

Validation Data

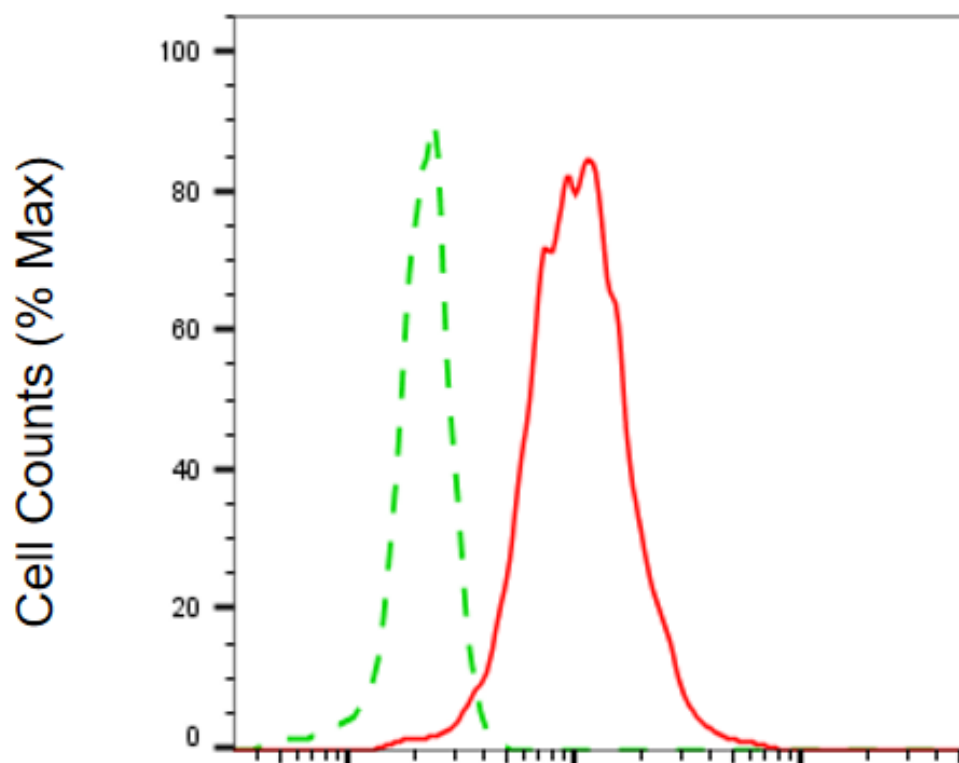
SUPPORT

SUPPORT@GENUINBIOTECH.COM
TEL: +1-540-855-7041

ORDERS

SALES@GENUINBIOTECH.COM
FAX: +1-540-855-7041

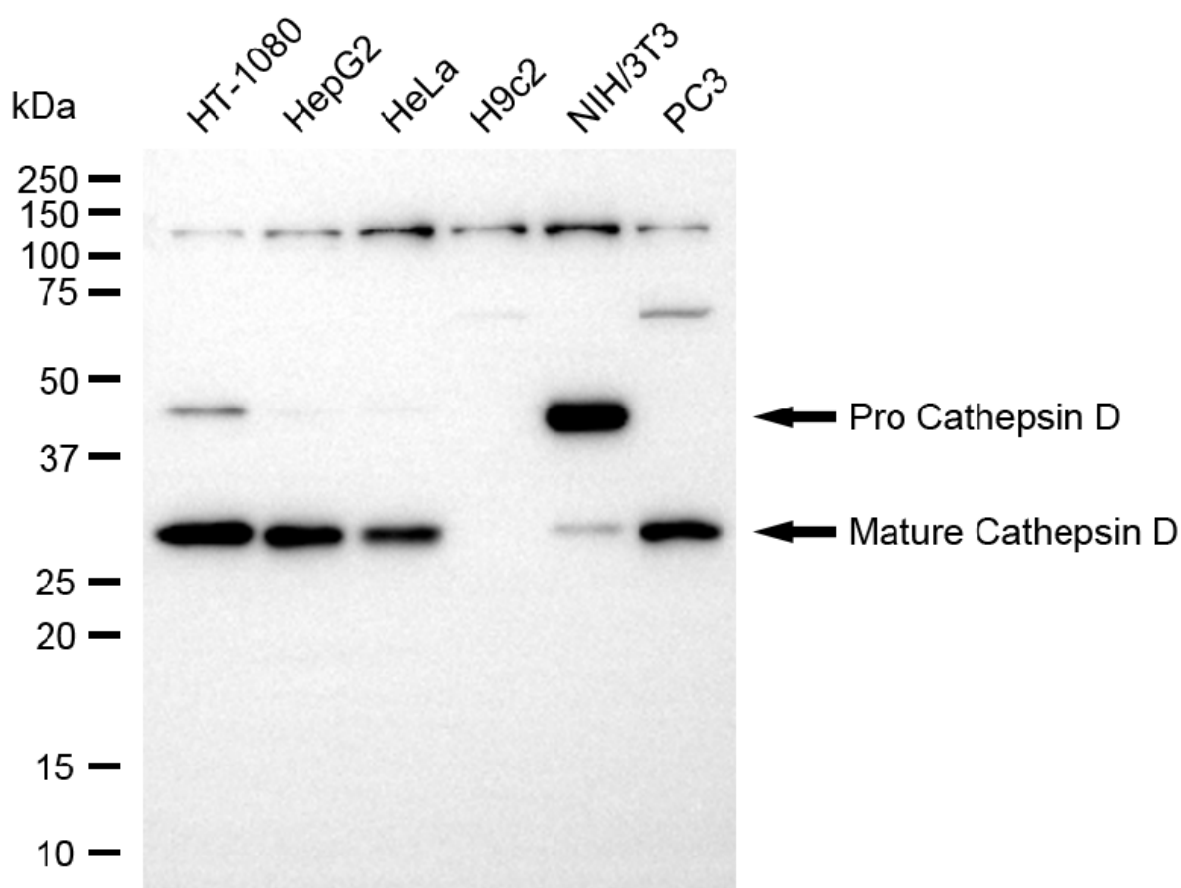
WWW.GENUINBIOTECH.COM



Copyright ©2025 Genuin Biotechnologies LLC

Glutamate-ammonia ligase-Alexa Fluor® 647

Flow cytometric analysis of Cathepsin D expression in HT-1080 cells using anti-Cathepsin D antibody (Cat#4103, 1:2,000). Green, isotype control; red, Cathepsin D.



Copyright ©2025 Genuin Biotechnologies LLC

Western blotting analysis using anti-cathepsin D antibody (Cat#4103). Total cell lysates (30 μ g) from various cell lines were loaded and separated by SDS-PAGE. The blot was incubated with anti-cathepsin D antibody (Cat#4103, 1:5,000) and HRP-conjugated goat anti-rabbit secondary antibody (Cat#201, 1:20,000) respectively. Image was developed using NaQ™ ECL Substrate Kit (Cat#716).