

# Anti-STAT6 Recombinant Rabbit Monoclonal Antibody



**Catalog #: 4104**

## Aliases

STAT6; Signal Transducer And Activator Of Transcription 6; IL-4-STAT; D12S1644; Signal Transducer And Activator Of Transcription 6, Interleukin-4 Induced; Transcription Factor IL-4 STAT; STAT, Interleukin4-Induced; EC 2.4.1.227; EC 2.7.7.6; IL-4 Stat; STAT6B; STAT6C; HIES6

## Background

Gene Name: STAT6

NCBI Gene Entry: [6778](#)

UniProt Entry: [P42226](#)

## Application Information

Molecular Weight: Predicted, 94 kDa; observed, 94 kDa

Clonality: Rabbit monoclonal antibody

Clone ID: 24GB9610

Species Reactivity: Human, mouse

Applications Tested: Western blotting (WB), flow cytometry (FCM)

## Immunogen

A synthesized peptide derived from human STAT6

## Isotype

Rabbit IgG

## Storage Buffer

Supplied in PBS (pH 7.4) containing 50% glycerol, and 0.02% sodium azide.

## Storage

Store at -20 °C for one year.

## Recommended Dilutions

Western Blotting (WB): 1:1,000-1:5,000

Flow Cytometry (FCM): 1:2,000

**Note:** This product is for research use only.

---

### SUPPORT

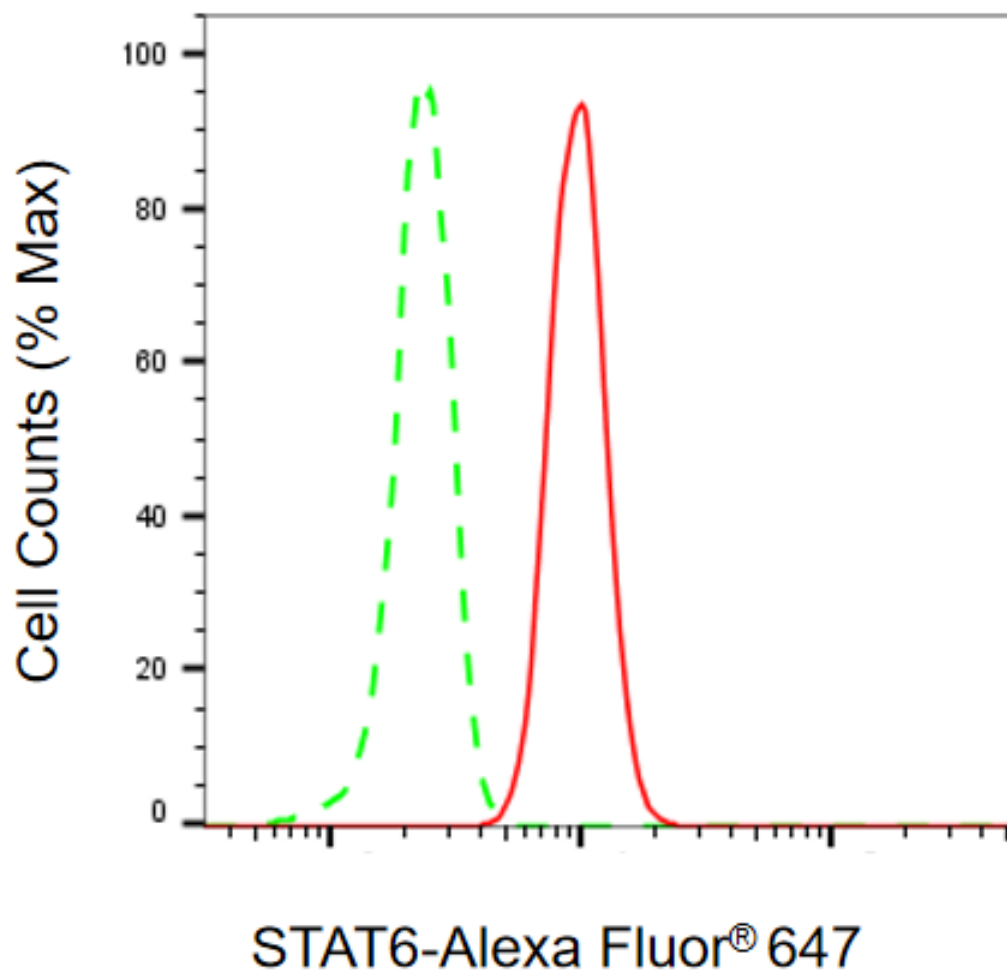
SUPPORT@GENUINBIOTECH.COM  
TEL: +1-540-855-7041

### ORDERS

SALES@GENUINBIOTECH.COM  
FAX: +1-540-855-7041

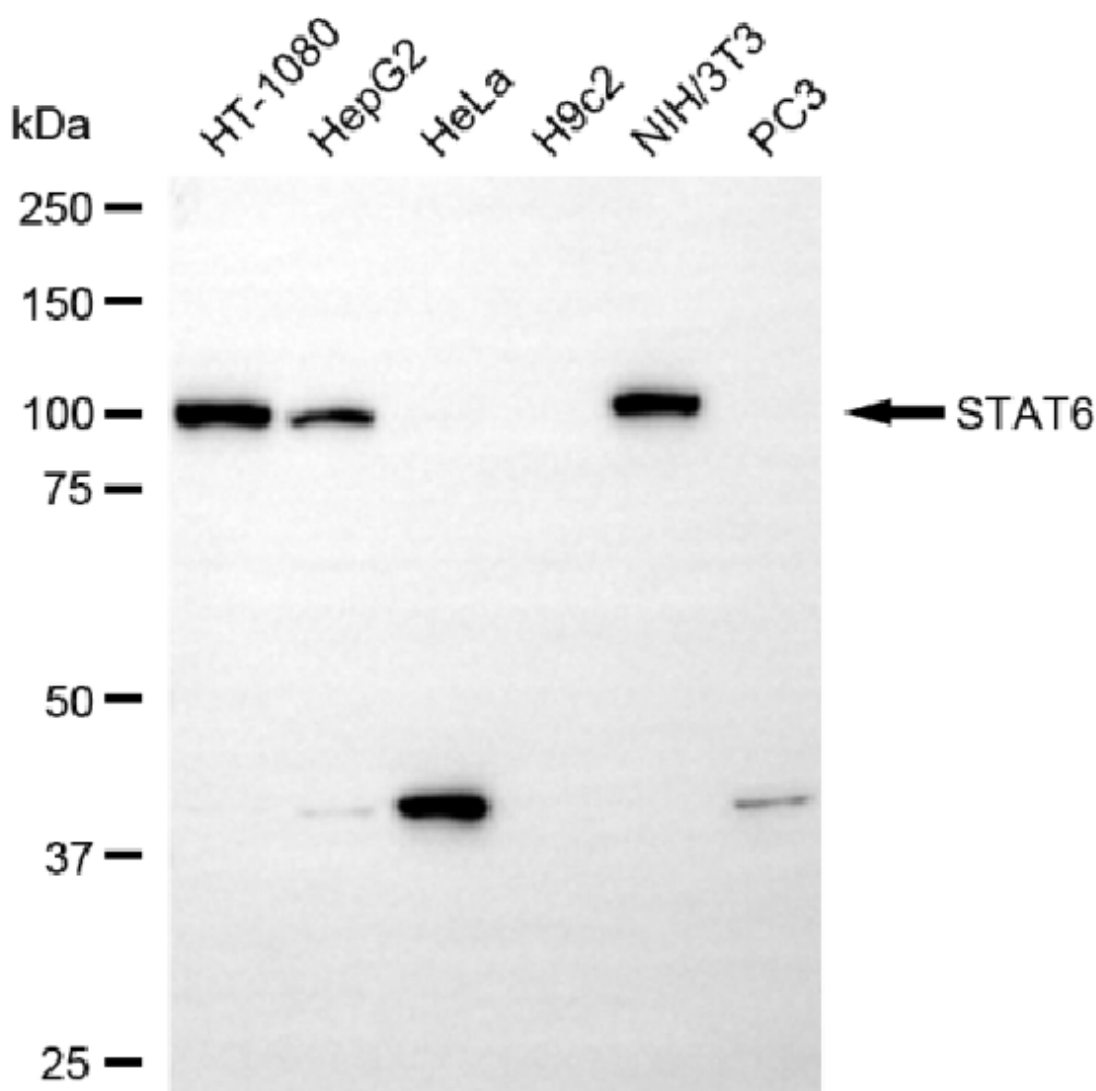
[WWW.GENUINBIOTECH.COM](http://WWW.GENUINBIOTECH.COM)

**Validation Data**



Copyright ©2025 Genuin Biotechnologies LLC

Flow cytometric analysis of STAT6 expression in HT-1080 cells using anti-STAT6 antibody (Cat#4104, 1:2,000). Green, isotype control; red, STAT6.



Copyright ©2025 Genuin Biotechnologies LLC

Western blotting analysis using anti-STAT6 antibody (Cat#4104). Total cell lysates (30  $\mu$ g) from various cell lines were loaded and separated by SDS-PAGE. The blot was incubated with anti-STAT6 antibody (Cat#4104, 1:5,000) and HRP-conjugated goat anti-rabbit secondary antibody (Cat#201, 1:20,000) respectively. Image was developed using NaQ™ ECL Substrate Kit (Cat#716).