

# Anti-Calreticulin Recombinant Rabbit Monoclonal Antibody



**Catalog #: 4105**

## Aliases

CALR; Calreticulin; Calregulin; CC1qR; CALR1; SSA; CRT; RO; Sicca Syndrome Antigen A (Autoantigen Ro; Calreticulin); Endoplasmic Reticulum Resident Protein 60; FLJ26680; CRP55; ERp60; HACBP; Grp60; Epididymis Secretory Sperm Binding Protein Li 99n; Autoantigen Ro; HEL-S-99n; CRTC

## Background

Gene Name: CALR

NCBI Gene Entry: [811](#)

UniProt Entry: [P27797](#)

## Application Information

Molecular Weight: Predicted, 48 kDa; observed, 60 kDa

Clonality: Rabbit monoclonal antibody

Clone ID: 24GB9615

Species Reactivity: Human, mouse, rat

Applications Tested: Western blotting (WB), immunocytochemistry (IC), flow cytometry (FCM)

## Immunogen

A synthesized peptide derived from human Calreticulin

## Isotype

Rabbit IgG

## Storage Buffer

Supplied in PBS (pH 7.4) containing 50% glycerol, and 0.02% sodium azide.

## Storage

Store at -20 °C for one year.

## Recommended Dilutions

Western Blotting (WB): 1:2,000-1:10,000

Immunocytochemistry (IC): 1:100-1:1,000

Flow Cytometry (FCM): 1:2,000

---

### SUPPORT

SUPPORT@GENUINBIOTECH.COM  
TEL: +1-540-855-7041

### ORDERS

SALES@GENUINBIOTECH.COM  
FAX: +1-540-855-7041

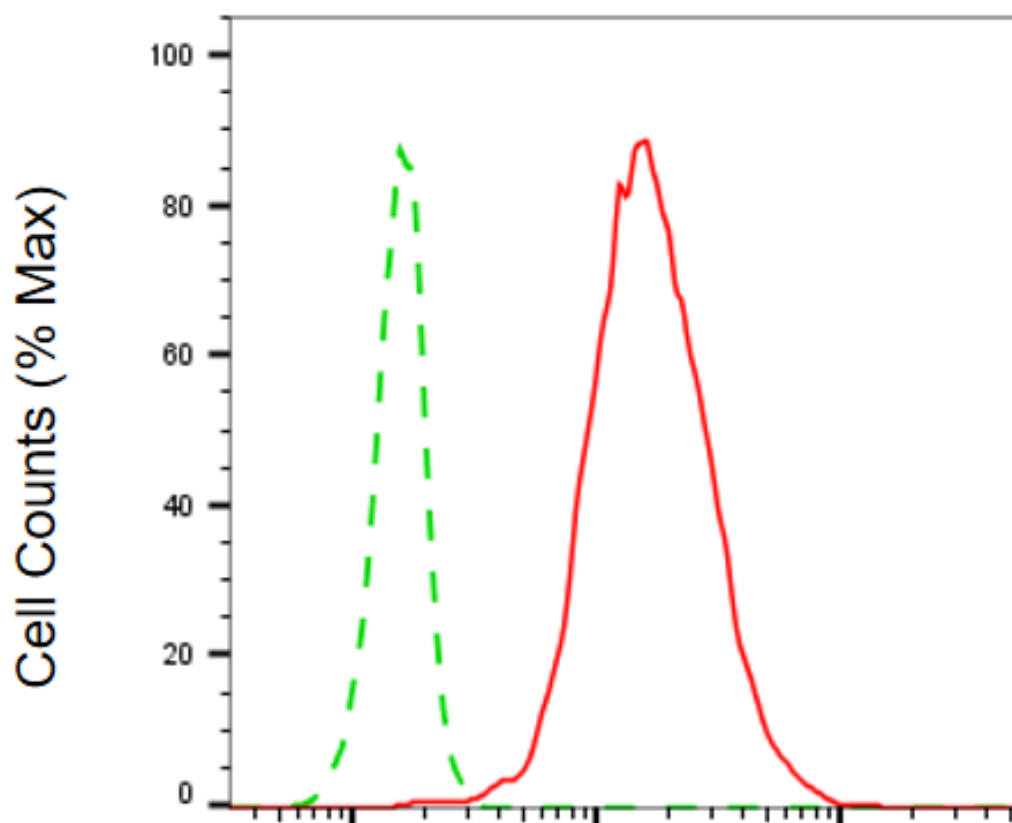
[WWW.GENUINBIOTECH.COM](http://WWW.GENUINBIOTECH.COM)

# Anti-Calreticulin Recombinant Rabbit Monoclonal Antibody

PAGE 2

**Note:** This product is for research use only.

## Validation Data



Copyright ©2025 Genuin Biotechnologies LLC

Calreticulin-Alexa Fluor® 647

Flow cytometric analysis of Calreticulin expression in C2C12 cells using anti-Calreticulin antibody (Cat#4105, 1:2,000). Green, isotype control; red, Calreticulin.

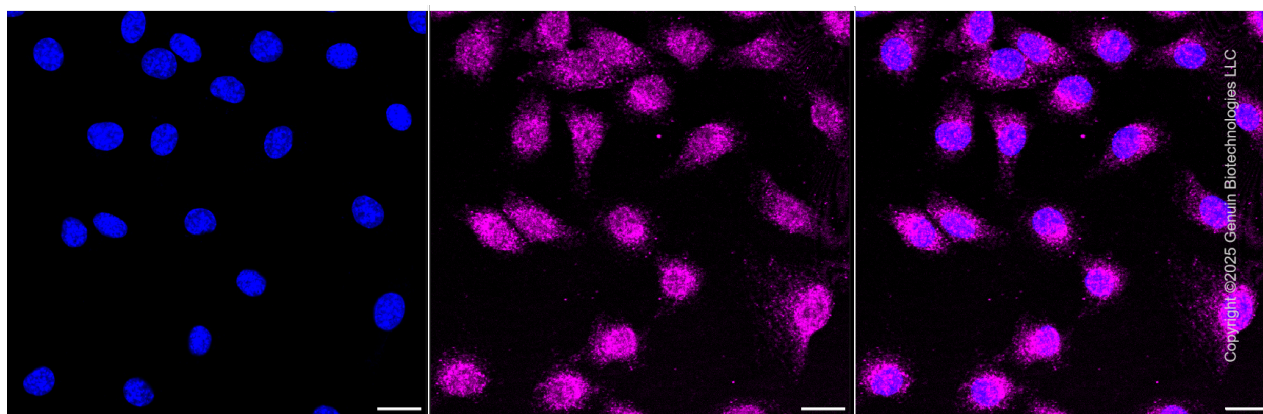
### SUPPORT

SUPPORT@GENUINBIOTECH.COM  
TEL: +1-540-855-7041

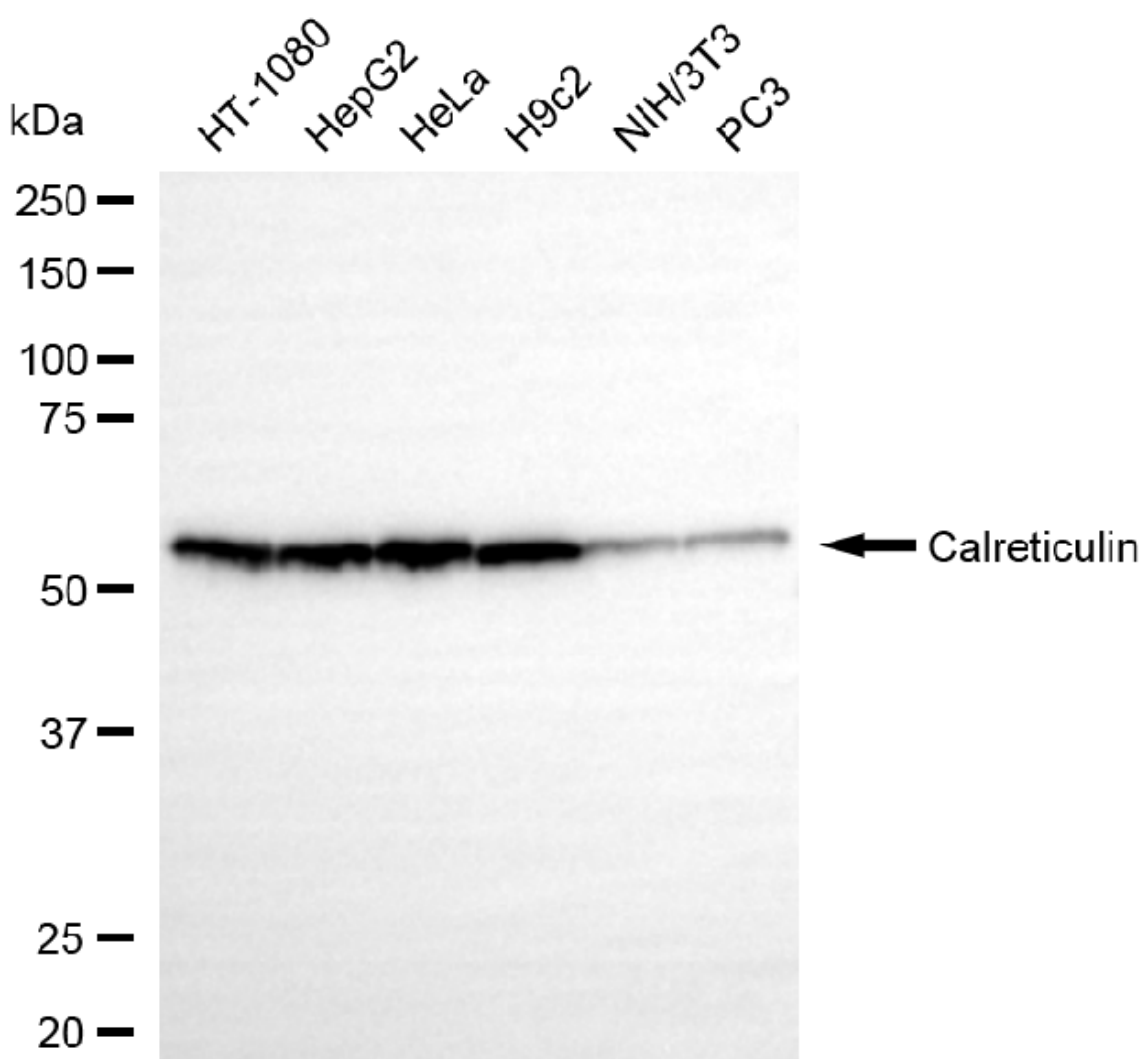
### ORDERS

SALES@GENUINBIOTECH.COM  
FAX: +1-540-855-7041

[WWW.GENUINBIOTECH.COM](http://WWW.GENUINBIOTECH.COM)



Immunocytochemical staining of C2C12 cells with anti-Calreticulin antibody (Cat#4105, 1:1,000) . Nuclei were stained blue with DAPI; Calreticulin was stained magenta with Alexa Fluor® 647. Images were taken using Leica stellaris 5. Protein abundance based on laser Intensity and smart gain: Medium. Scale bar, 20  $\mu$ m.



Copyright ©2025 Genuin Biotechnologies LLC

## SUPPORT

SUPPORT@GENUINBIOTECH.COM  
TEL: +1-540-855-7041

## ORDERS

SALES@GENUINBIOTECH.COM  
FAX: +1-540-855-7041

WWW.GENUINBIOTECH.COM

## **Anti-Calreticulin Recombinant Rabbit Monoclonal Antibody**

PAGE 4

Western blotting analysis using anti-calreticulin antibody (Cat#4105). Total cell lysates (20 µg) from various cell lines were loaded and separated by SDS-PAGE. The blot was incubated with anti-calreticulin antibody (Cat#4105, 1:10,000) and HRP-conjugated goat anti-rabbit secondary antibody (Cat#201, 1:20,000) respectively. Image was developed using NaQ™ ECL Substrate Kit (Cat#716).

---

### **SUPPORT**

SUPPORT@GENUINBIOTECH.COM  
TEL: +1-540-855-7041

### **ORDERS**

SALES@GENUINBIOTECH.COM  
FAX: +1-540-855-7041

**WWW.GENUINBIOTECH.COM**