

Anti-Cyclin dependent kinase inhibitor 1B Recombinant Rabbit Monoclonal Antibody



Catalog #: 4106

Aliases

CDKN1B; Cyclin Dependent Kinase Inhibitor 1B; KIP1; P27KIP1; Cyclin-Dependent Kinase Inhibitor 1B (P27, Kip1); Cyclin-Dependent Kinase Inhibitor 1B; Cyclin-Dependent Kinase Inhibitor P27; P27Kip1; CDKN4; MEN1B; MEN4; P27

Background

Gene Name: CDKN1B

NCBI Gene Entry: [1027](#)

UniProt Entry: [P46527](#)

Application Information

Molecular Weight: Predicted, 22 kDa; observed, 27 kDa

Clonality: Rabbit monoclonal antibody

Clone ID: 24GB9620

Species Reactivity: Human

Applications Tested: Western blotting (WB), flow cytometry (FCM), immunocytochemistry (IC)

Immunogen

A synthesized peptide derived from human p27 KIP 1

Isotype

Rabbit IgG

Storage Buffer

Supplied in PBS (pH 7.4) containing 50% glycerol, and 0.02% sodium azide.

Storage

Store at -20 °C for one year.

Recommended Dilutions

Western Blotting (WB): 1:500-1:2,500

Flow Cytometry (FCM): 1:2,000

Immunocytochemistry (IC): 1:100-1:1,000

Note: This product is for research use only.

SUPPORT

SUPPORT@GENUINBIOTECH.COM
TEL: +1-540-855-7041

ORDERS

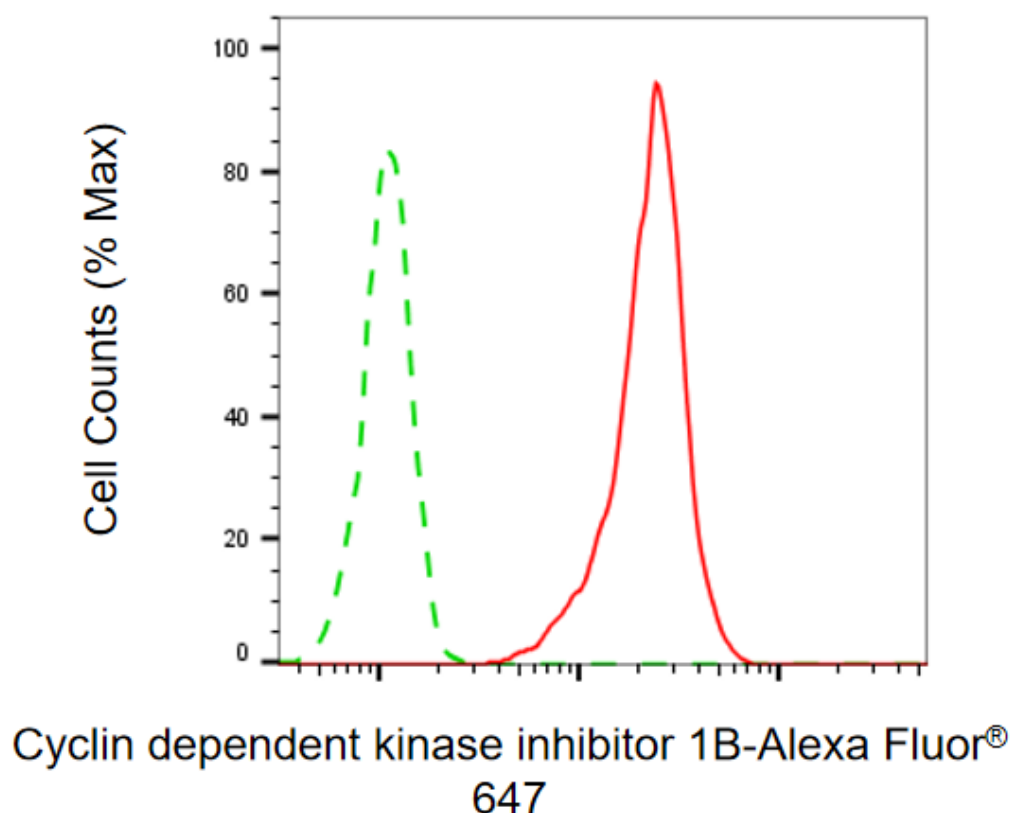
SALES@GENUINBIOTECH.COM
FAX: +1-540-855-7041

WWW.GENUINBIOTECH.COM

Anti-Cyclin dependent kinase inhibitor 1B Recombinant Rabbit Monoclonal Antibody

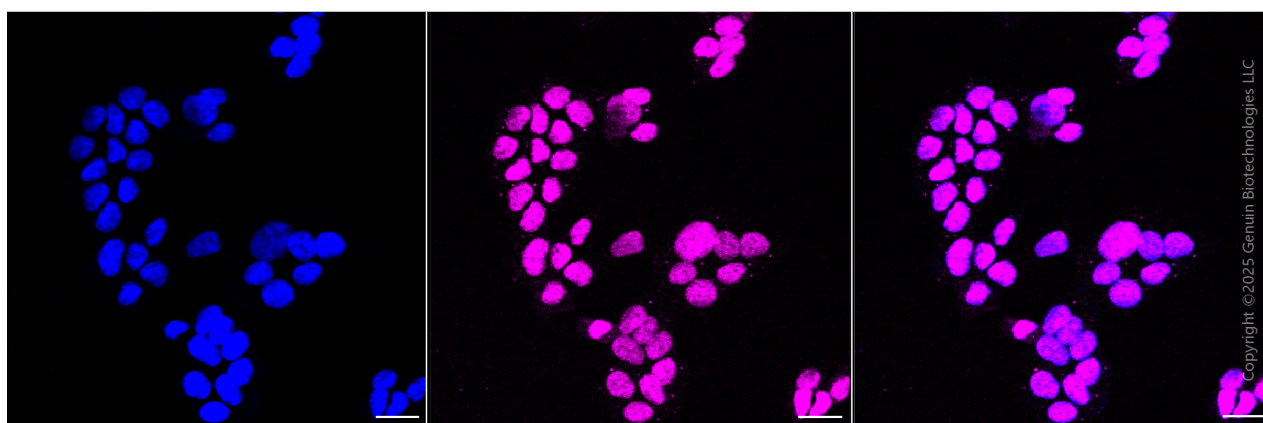
PAGE 2

Validation Data



Copyright ©2025 Genuin Biotechnologies LLC

Flow cytometric analysis of Cyclin dependent kinase inhibitor 1B expression in HAP-1 cells using anti-Cyclin dependent kinase inhibitor 1B antibody (Cat#4106, 1:2,000). Green, isotype control; red, Cyclin dependent kinase inhibitor 1B.



Immunocytochemical staining of HAP-1 cells with anti-Cyclin dependent kinase inhibitor 1B antibody (Cat#4106, 1:1,000) . Nuclei were stained blue with DAPI; Cyclin dependent kinase inhibitor 1B was stained magenta with Alexa Fluor® 647. Images were taken using Leica stellaris

SUPPORT

SUPPORT@GENUINBIOTECH.COM
TEL: +1-540-855-7041

ORDERS

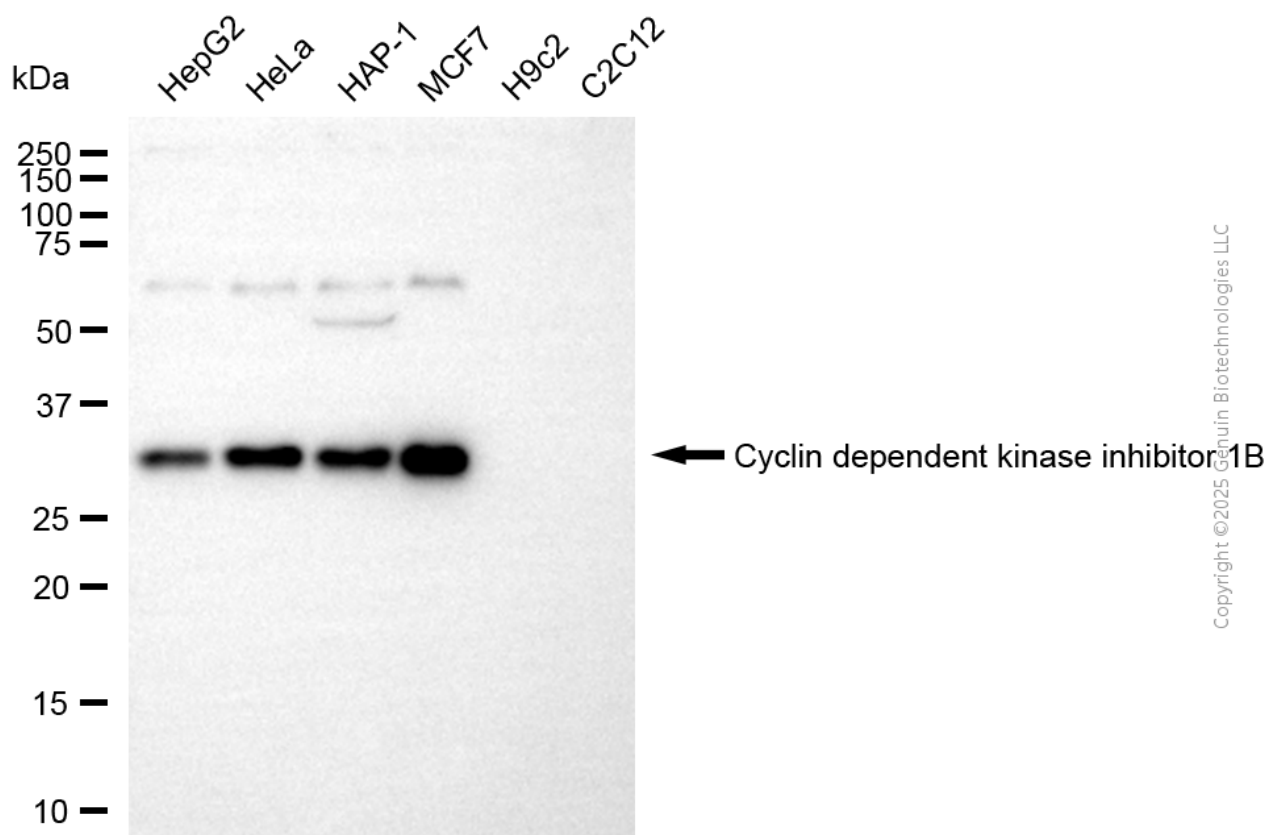
SALES@GENUINBIOTECH.COM
FAX: +1-540-855-7041

WWW.GENUINBIOTECH.COM

Anti-Cyclin dependent kinase inhibitor 1B Recombinant Rabbit Monoclonal Antibody

PAGE 3

5. Protein abundance based on laser Intensity and smart gain: Medium. Scale bar, 20 μ m.



Western blotting analysis using anti-Cyclin dependent kinase inhibitor 1B antibody (Cat#4106). Total cell lysates (30 μ g) from various cell lines were loaded and separated by SDS-PAGE. The blot was incubated with anti-Cyclin dependent kinase inhibitor 1B antibody (Cat#4106, 1:2,500) and HRP-conjugated goat anti-rabbit secondary antibody (Cat#201, 1:20,000) respectively. Image was developed using NaQ™ ECL Substrate Kit (Cat#716).

SUPPORT

SUPPORT@GENUINBIOTECH.COM
TEL: +1-540-855-7041

ORDERS

SALES@GENUINBIOTECH.COM
FAX: +1-540-855-7041

WWW.GENUINBIOTECH.COM