

Anti-SCARB1 Recombinant Rabbit Monoclonal Antibody



Catalog #: 4107

Aliases

SCARB1; Scavenger Receptor Class B Member 1; CLA-1; SR-BI; SRB1; CLA1; CD36L1; CD36 Antigen (Collagen Type I Receptor, Thrombospondin Receptor)-Like 1; CD36 And LIMPII Analogous 1; Collagen Type I Receptor, Thrombospondin Receptor-Like 1; Scavenger Receptor Class B, Member 1; Scavenger Receptor Class B Type III; CD36 Antigen-Like 1; CD36 Antigen; HDLQTL6; HDLCQ6

Background

Gene Name: SCARB1

NCBI Gene Entry: [949](#)

UniProt Entry: [Q8WTV0](#)

Application Information

Molecular Weight: Predicted, 61 kDa; observed, 75 kDa

Clonality: Rabbit monoclonal antibody

Clone ID: 24GB9625

Species Reactivity: Human, mouse, rat

Applications Tested: Western blotting (WB)

Immunogen

A synthesized peptide derived from human Scavenging Receptor SR-BI

Isotype

Rabbit IgG

Storage Buffer

Supplied in PBS (pH 7.4) containing 50% glycerol, and 0.02% sodium azide.

Storage

Store at -20 °C for one year.

Recommended Dilutions

Western Blotting (WB): 1:1,000-1:5,000

Note: This product is for research use only.

SUPPORT

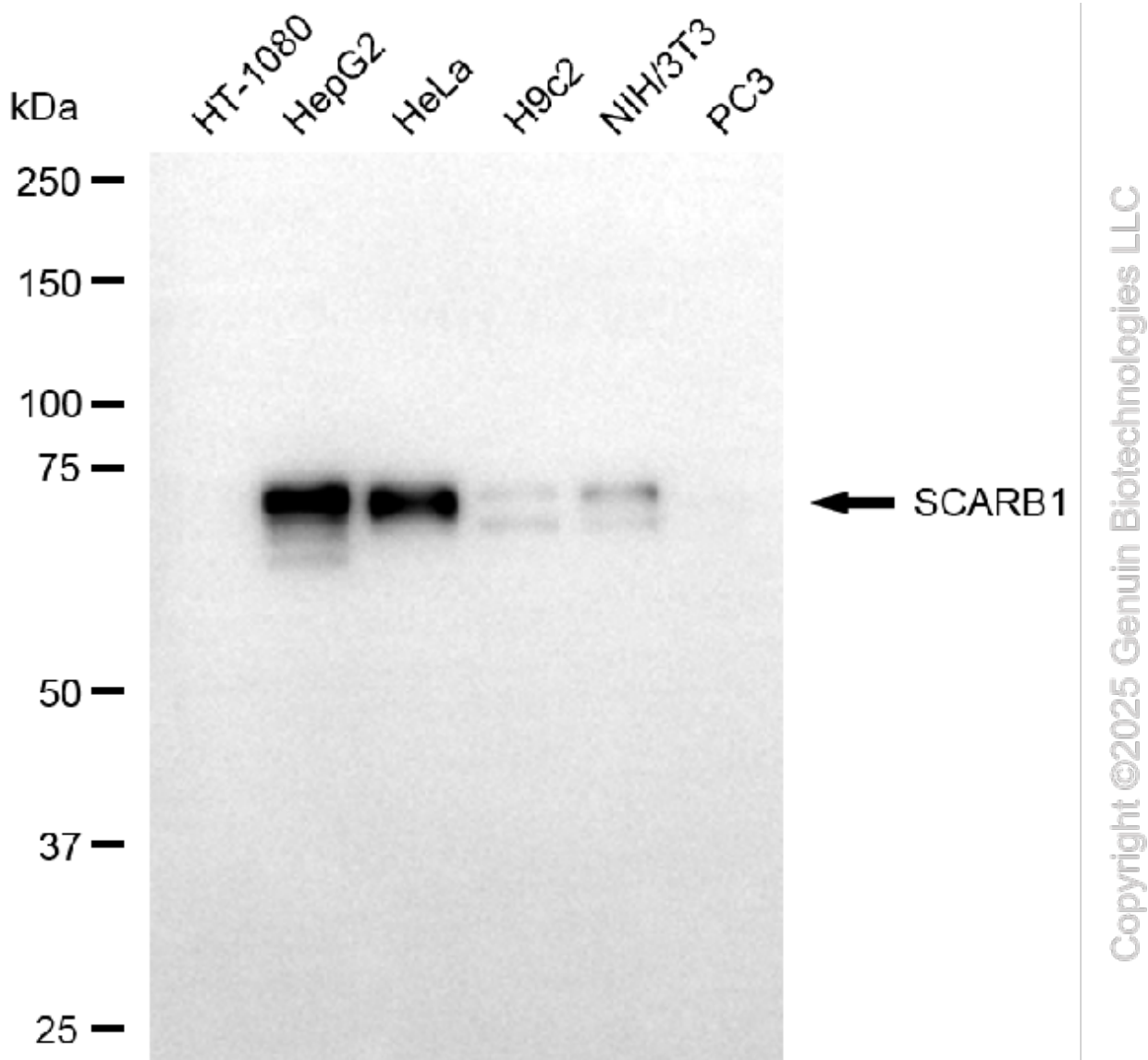
SUPPORT@GENUINBIOTECH.COM
TEL: +1-540-855-7041

ORDERS

SALES@GENUINBIOTECH.COM
FAX: +1-540-855-7041

WWW.GENUINBIOTECH.COM

Validation Data



Western blotting analysis using anti-SCARB1 antibody (Cat#4107). Total cell lysates (30 μ g) from various cell lines were loaded and separated by SDS-PAGE. The blot was incubated with anti-SCARB1 antibody (Cat#4107, 1:5,000) and HRP-conjugated goat anti-rabbit secondary antibody (Cat#201, 1:20,000) respectively. Image was developed using FeQ™ ECL Substrate Kit (Cat#226).

SUPPORT

SUPPORT@GENUINBIOTECH.COM
TEL: +1-540-855-7041

ORDERS

SALES@GENUINBIOTECH.COM
FAX: +1-540-855-7041

WWW.GENUINBIOTECH.COM