

Anti-Hsp60 Recombinant Rabbit Monoclonal Antibody



Catalog #: 4115

Aliases

HSPD1; Heat Shock Protein Family D (Hsp60) Member 1; HSP60; 60 KDa Heat Shock Protein, Mitochondrial; Heat Shock 60kDa Protein 1 (Chaperonin); Mitochondrial Matrix Protein P1; P60 Lymphocyte Protein; 60 KDa Chaperonin; Chaperonin 60; HuCHA60; HSP-60; CPN60; GROEL; SPG13; Spastic Paraplegia 13 (Autosomal Dominant); Epididymis Secretory Sperm Binding Protein; Heat Shock 60kD Protein 1 (Chaperonin); Short Heat Shock Protein 60 Hsp60s1; Heat Shock Protein 65; Heat Shock Protein 60; EC 5.6.1.7; GroEL; HSP65; Hsp60; HLD4

Background

Gene Name: HSPD1

NCBI Gene Entry: [3329](#)

UniProt Entry: [P10809](#)

Application Information

Molecular Weight: Predicted, 61 kDa; observed, 60 kDa

Clonality: Rabbit monoclonal antibody

Clone ID: 24GB9660

Species Reactivity: Human, mouse, rat

Applications Tested: Western blotting (WB), flow cytometry (FCM), immunocytochemistry (IC)

Immunogen

A synthesized peptide derived from human Hsc60

Isotype

Rabbit IgG

Storage Buffer

Supplied in PBS (pH 7.4) containing 50% glycerol, and 0.02% sodium azide.

Storage

Store at -20 °C for one year.

Recommended Dilutions

Western Blotting (WB): 1:2,000-1:10,000

Flow Cytometry (FCM): 1:2,000

Immunocytochemistry (IC): 1:100-1:1,000

SUPPORT

SUPPORT@GENUINBIOTECH.COM
TEL: +1-540-855-7041

ORDERS

SALES@GENUINBIOTECH.COM
FAX: +1-540-855-7041

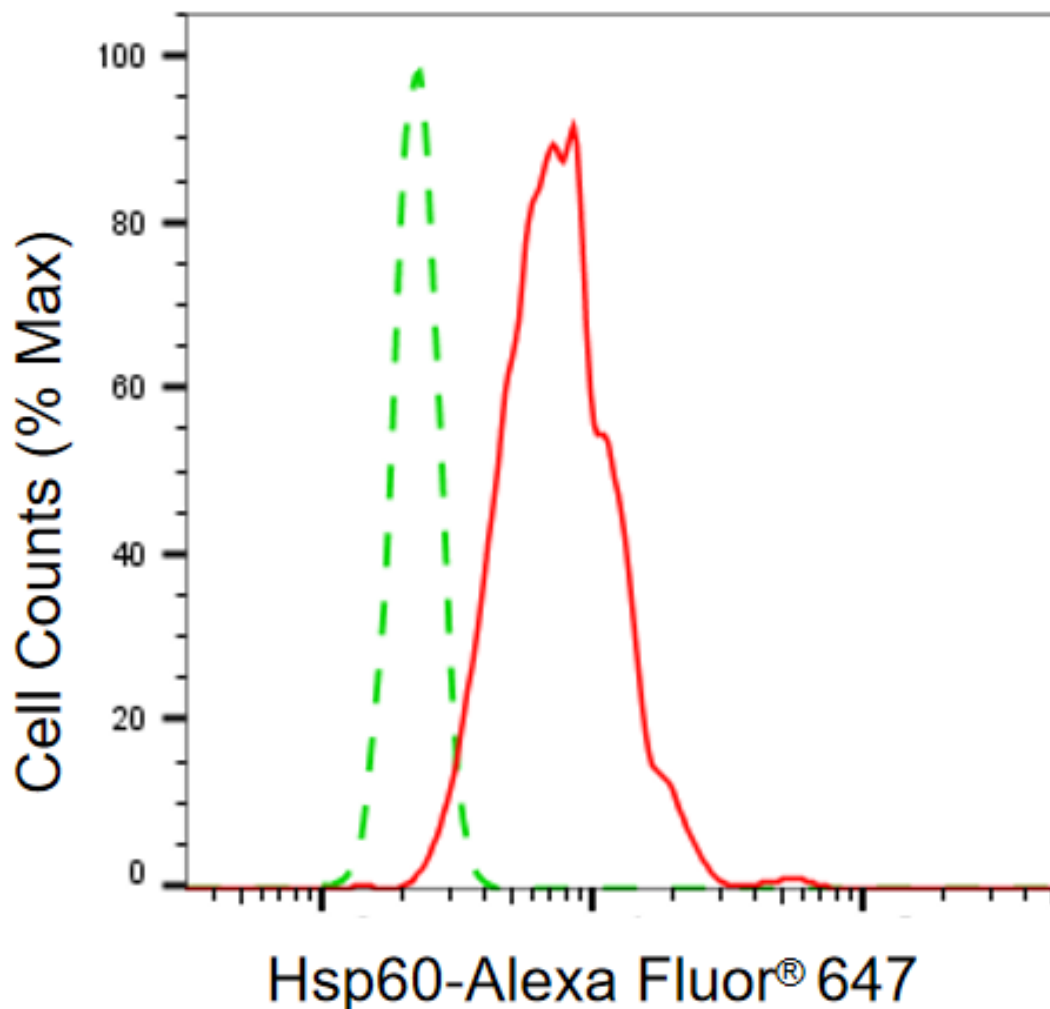
WWW.GENUINBIOTECH.COM

Anti-Hsp60 Recombinant Rabbit Monoclonal Antibody

PAGE 2

Note: This product is for research use only.

Validation Data



Copyright ©2025 Genuin Biotechnologies LLC

Flow cytometric analysis of Hsp60 expression in HT-1080 cells using anti-Hsp60 antibody (Cat#4115, 1:2,000). Green, isotype control; red, Hsp60.

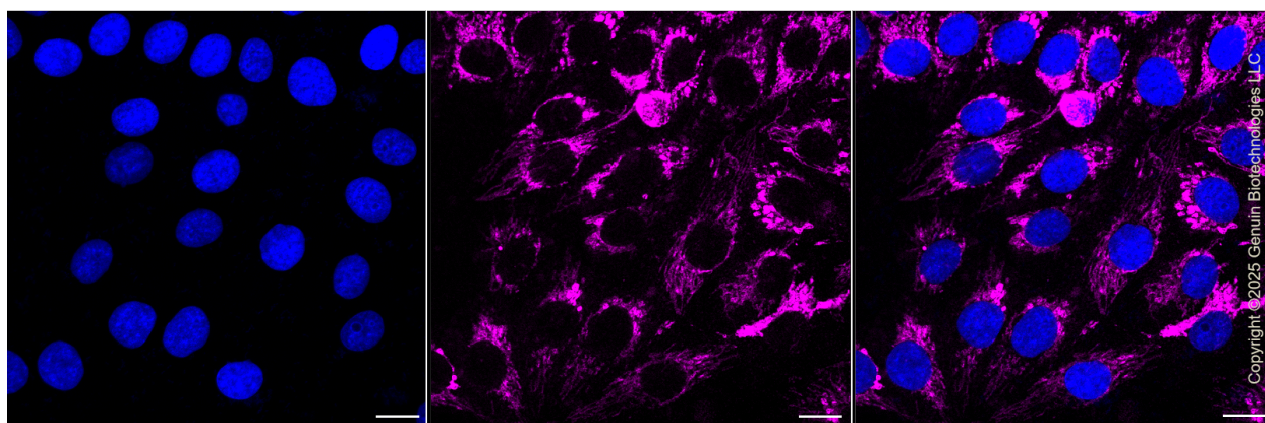
SUPPORT

SUPPORT@GENUINBIOTECH.COM
TEL: +1-540-855-7041

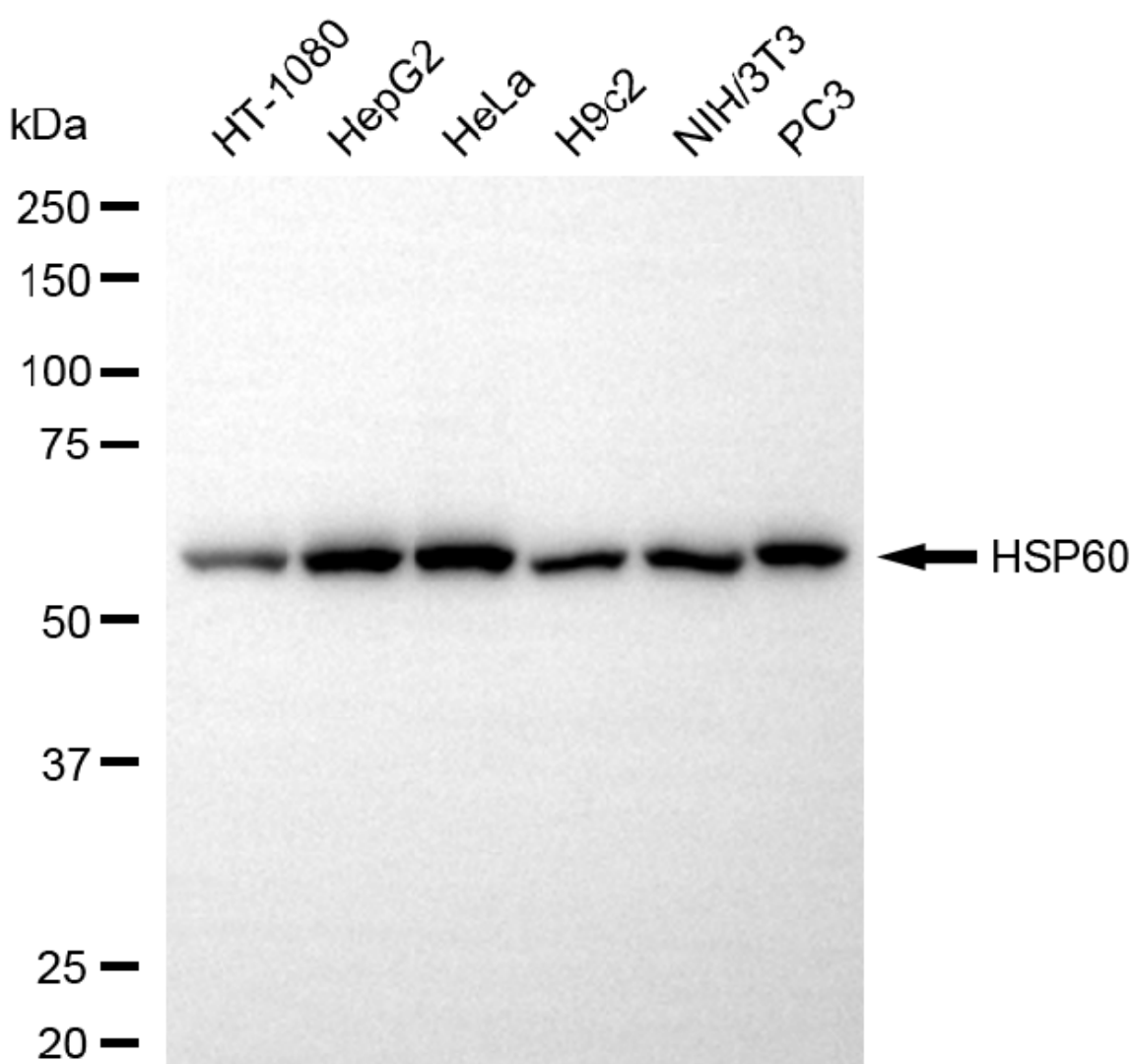
ORDERS

SALES@GENUINBIOTECH.COM
FAX: +1-540-855-7041

WWW.GENUINBIOTECH.COM



Immunocytochemical staining of HT-1080 cells with anti-Hsp60 antibody (Cat#4115, 1:1,000). Nuclei were stained blue with DAPI; Hsp60 was stained magenta with Alexa Fluor® 647. Images were taken using Leica stellaris 5. Protein abundance based on laser Intensity and smart gain: High. Scale bar, 20 μ m.



Copyright ©2025 Genuin Biotechnologies LLC

Anti-Hsp60 Recombinant Rabbit Monoclonal Antibody

PAGE 4

Western blotting analysis using anti-Hsp60 antibody (Cat#4115). Total cell lysates (20 µg) from various cell lines were loaded and separated by SDS-PAGE. The blot was incubated with anti-Hsp60 antibody (Cat#4115, 1:10,000) and HRP-conjugated goat anti-rabbit secondary antibody (Cat#201, 1:20,000) respectively. Image was developed using NaQ™ ECL Substrate Kit (Cat#716).

SUPPORT

SUPPORT@GENUINBIOTECH.COM
TEL: +1-540-855-7041

ORDERS

SALES@GENUINBIOTECH.COM
FAX: +1-540-855-7041

WWW.GENUINBIOTECH.COM