

Anti-Cell division cycle 16 Recombinant Rabbit Monoclonal Antibody



Catalog #: 4126

Aliases

CDC16; Cell Division Cycle 16; ANAPC6; APC6; CUT9; Cell Division Cycle Protein 16 Homolog; Anaphase-Promoting Complex, Subunit 6; Cyclosome Subunit 6; CDC16Hs; CDC16 (Cell Division Cycle 16, *S. Cerevisiae*, Homolog); CDC16 Cell Division Cycle 16 Homolog (*S. Cerevisiae*); Cell Division Cycle 16 Homolog (*S. Cerevisiae*); Anaphase-Promoting Complex Subunit 6; Cell Division Cycle 16 Homolog; CDC16 Homolog

Background

Gene Name: CDC16
NCBI Gene Entry: [8881](#)
UniProt Entry: [Q13042](#)

Application Information

Molecular Weight: Predicted, 72 kDa; observed, 71 kDa
Clonality: Rabbit monoclonal antibody
Clone ID: 24GB9705
Species Reactivity: Human, mouse, rat
Applications Tested: Western blotting (WB), flow cytometry (FCM), immunocytochemistry (IC)

Immunogen

A synthesized peptide derived from human Apc6 / CDC16

Isotype

Rabbit IgG

Storage Buffer

Supplied in PBS (pH 7.4) containing 50% glycerol, and 0.02% sodium azide.

Storage

Store at -20 °C for one year.

Recommended Dilutions

Western Blotting (WB): 1:1,000-1:5,000
Flow Cytometry (FCM): 1:2,000
Immunocytochemistry (IC): 1:100-1:1,000

SUPPORT

SUPPORT@GENUINBIOTECH.COM
TEL: +1-540-855-7041

ORDERS

SALES@GENUINBIOTECH.COM
FAX: +1-540-855-7041

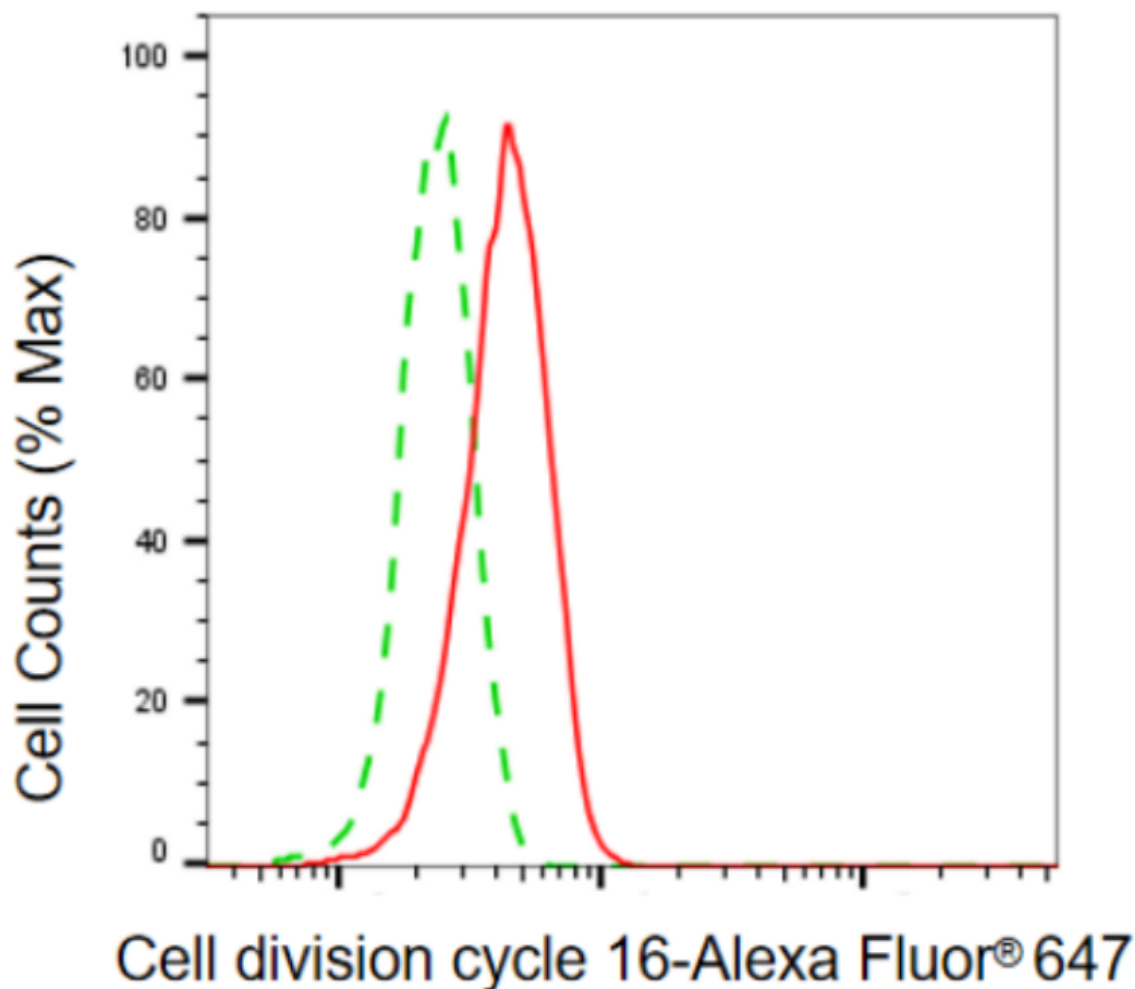
WWW.GENUINBIOTECH.COM

Anti-Cell division cycle 16 Recombinant Rabbit Monoclonal Antibody

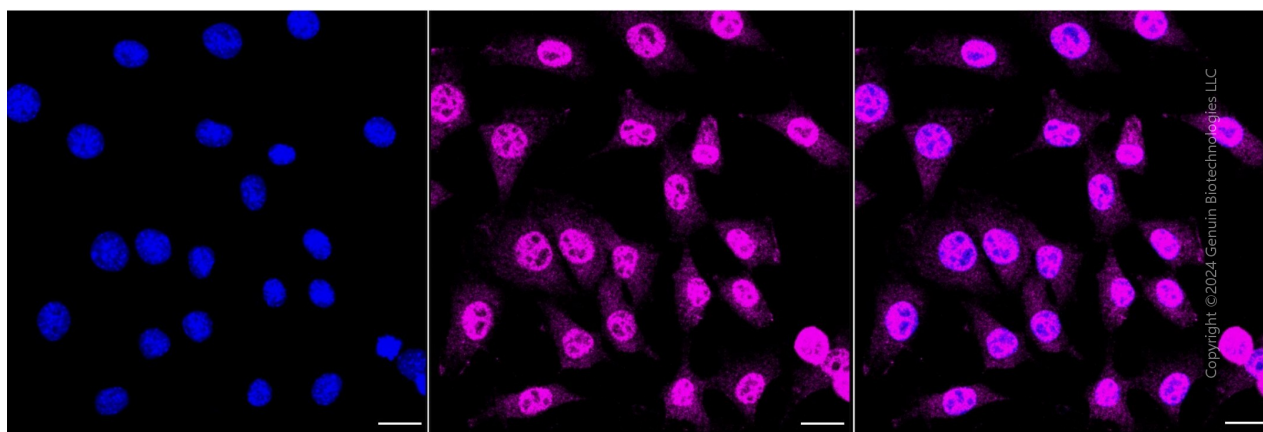
PAGE 2

Note: This product is for research use only.

Validation Data



Flow cytometric analysis of cell division cycle 16 expression in C2C12 cells using anti-cell division cycle 16 antibody (Cat#4126, 1:2,000). Green, isotype control; red, cell division cycle 16.



SUPPORT

SUPPORT@GENUINBIOTECH.COM
TEL: +1-540-855-7041

ORDERS

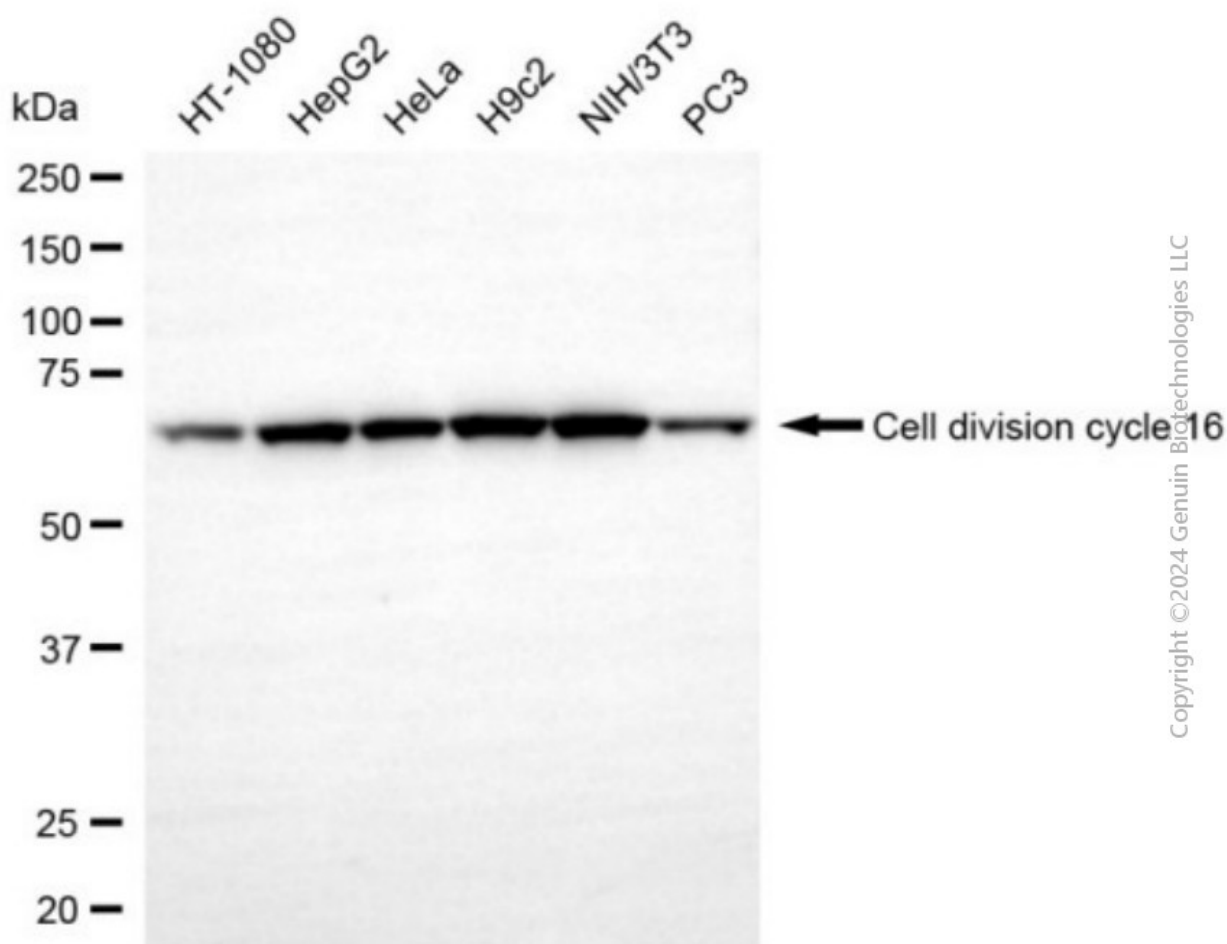
SALES@GENUINBIOTECH.COM
FAX: +1-540-855-7041

WWW.GENUINBIOTECH.COM

Anti-Cell division cycle 16 Recombinant Rabbit Monoclonal Antibody

PAGE 3

Immunocytochemical staining of C2C12 cells with anti-Cell division cycle 16 antibody (Cat#4126, 1:1,000). Nuclei were stained blue with DAPI; Cell division cycle 16 was stained magenta with Alexa Fluor® 647. Images were taken using Leica stellaris 5. Protein abundance based on laser Intensity and smart gain: Medium. Scale bar, 20 μ m.



Western blotting analysis using anti-cell division cycle 16 antibody (Cat#4126). Total cell lysates (30 μ g) from various cell lines were loaded and separated by SDS-PAGE. The blot was incubated with anti-cell division cycle 16 antibody (Cat#4126, 1:5,000) and HRP-conjugated goat anti-rabbit secondary antibody (Cat#201, 1:20,000) respectively. Image was developed using NaQ™ ECL Substrate Kit (Cat#716).

SUPPORT

SUPPORT@GENUINBIOTECH.COM
TEL: +1-540-855-7041

ORDERS

SALES@GENUINBIOTECH.COM
FAX: +1-540-855-7041

WWW.GENUINBIOTECH.COM