

Anti-MLKL Recombinant Rabbit Monoclonal Antibody



Catalog #: 4133

Aliases

MLKL; Mixed Lineage Kinase Domain Like Pseudokinase; Mixed Lineage Kinase Domain-Like Protein; FLJ34389; HMLKL; Mixed Lineage Kinase Domain-Like

Background

Gene Name: MLKL

NCBI Gene Entry: [197259](#)

UniProt Entry: [Q8NB16](#)

Application Information

Molecular Weight: Predicted, 54 kDa; observed, 54 kDa

Clonality: Rabbit monoclonal antibody

Clone ID: 24GB9735

Species Reactivity: Human, mouse

Applications Tested: Western blotting (WB), flow cytometry (FCM)

Immunogen

A synthesized peptide derived from human MLKL

Isotype

Rabbit IgG

Storage Buffer

Supplied in PBS (pH 7.4) containing 50% glycerol, and 0.02% sodium azide.

Storage

Store at -20 °C for one year.

Recommended Dilutions

Western Blotting (WB): 1:1,000-1:5,000

Flow Cytometry (FCM): 1:2,000

Note: This product is for research use only.

Validation Data

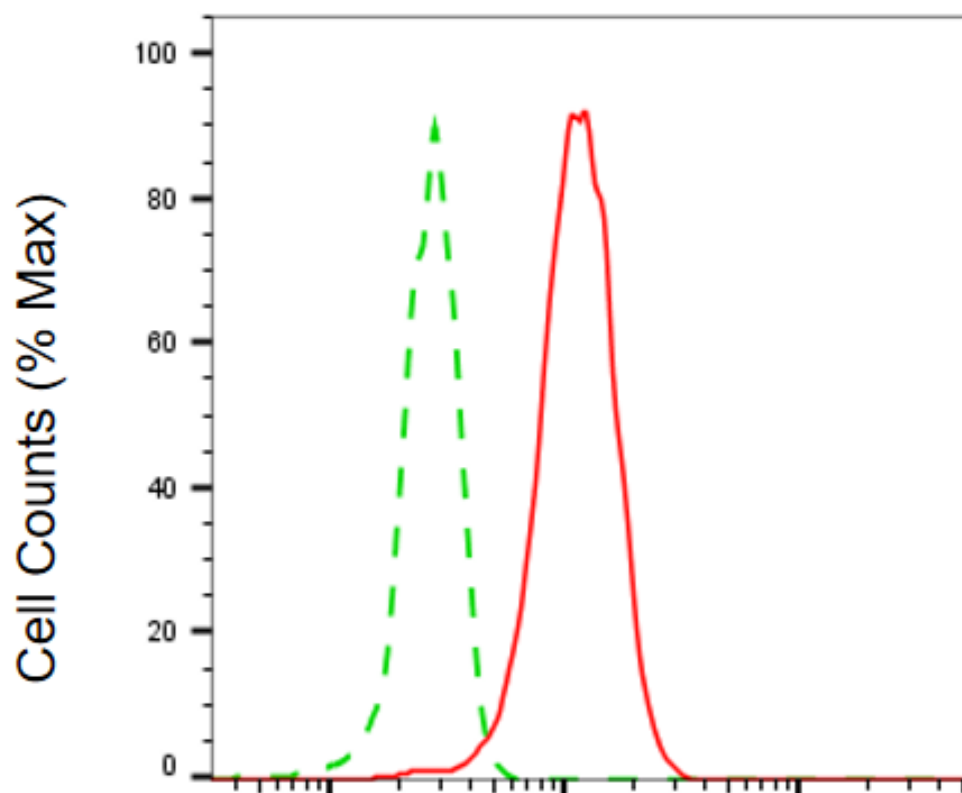
SUPPORT

SUPPORT@GENUINBIOTECH.COM
TEL: +1-540-855-7041

ORDERS

SALES@GENUINBIOTECH.COM
FAX: +1-540-855-7041

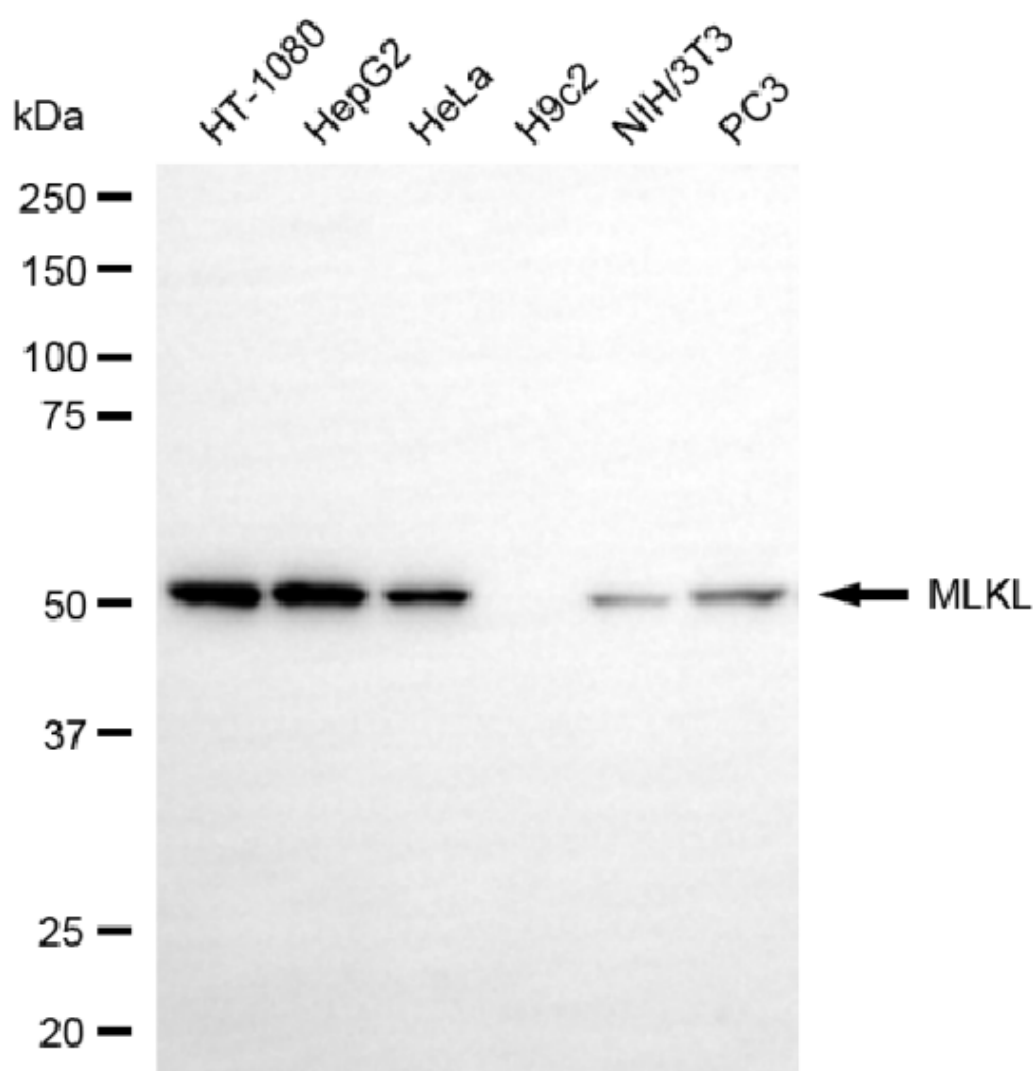
WWW.GENUINBIOTECH.COM



Copyright ©2025 Genuin Biotechnologies LLC

MLKL-Alexa Fluor® 647

Flow cytometric analysis of MLKL expression in HepG2 cells using anti-MLKL antibody (Cat#4133, 1:2,000). Green, isotype control; red, MLKL.



Copyright ©2025 Genuin Biotechnologies LLC

Western blotting analysis using anti-MLKL antibody (Cat#4133). Total cell lysates (30 μ g) from various cell lines were loaded and separated by SDS-PAGE. The blot was incubated with anti-MLKL antibody (Cat#4133, 1:5,000) and HRP-conjugated goat anti-rabbit secondary antibody (Cat#201, 1:20,000) respectively. Image was developed using NaQ™ ECL Substrate Kit (Cat#716).