

Anti-Hexokinase 1 Recombinant Rabbit Monoclonal Antibody



Catalog #: 4144

Aliases

Brain Form Hexokinase; Hexokinase Type I; Hexokinase-1; Hexokinase-A; EC 2.7.1.1; Neuropathy, Hereditary Motor And Sensory, Russe Type; Glycolytic Enzyme; Hexokinase IR; Hexokinase; EC 2.7.1; NEDVIBA; HK1-Ta; HK1-Tb; HK1-Tc; HMSNR; HXK1; NMSR; RP79; HK I; HKD; HKI; HK

Background

Gene Name: HK1

NCBI Gene Entry: [3098](#)

UniProt Entry: [P19367](#)

Application Information

Molecular Weight: Predicted, 102 kDa; observed, 102 kDa

Clonality: Rabbit monoclonal antibody

Clone ID: 24GB9780

Species Reactivity: Human, mouse, rat

Applications Tested: Western blotting (WB), flow cytometry (FCM), immunocytochemistry (IC)

Immunogen

A synthesized peptide derived from human Hexokinase 1

Isotype

Rabbit IgG

Storage Buffer

Supplied in PBS (pH 7.4) containing 50% glycerol, and 0.02% sodium azide.

Storage

Store at -20 °C for one year.

Recommended Dilutions

Western Blotting (WB): 1:1,000-1:5,000

Flow Cytometry (FCM): 1:2,000

Immunocytochemistry (IC): 1:100-1:1,000

SUPPORT

SUPPORT@GENUINBIOTECH.COM
TEL: +1-540-855-7041

ORDERS

SALES@GENUINBIOTECH.COM
FAX: +1-540-855-7041

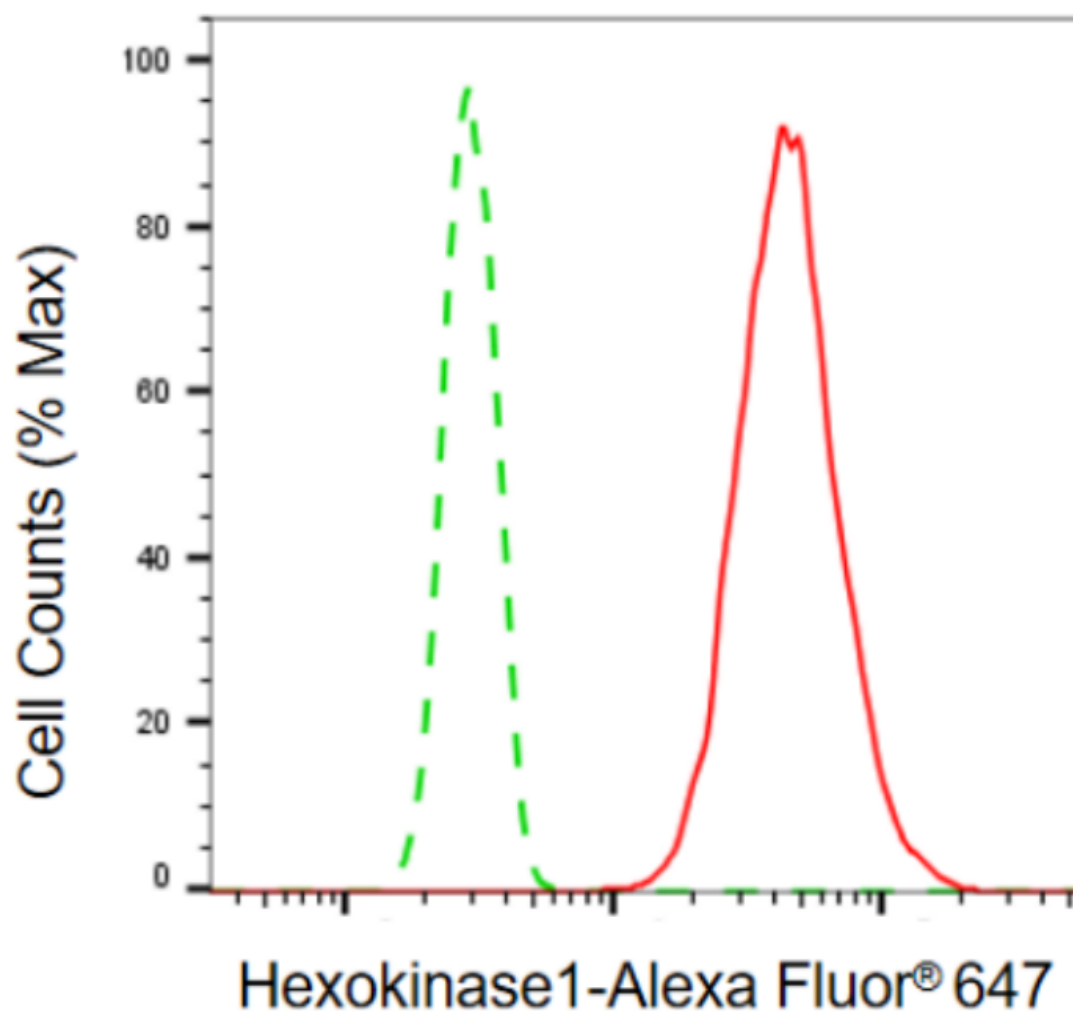
WWW.GENUINBIOTECH.COM

Anti-Hexokinase 1 Recombinant Rabbit Monoclonal Antibody

PAGE 2

Note: This product is for research use only.

Validation Data



Copyright ©2024 Genuin Biotechnologies LLC

Flow cytometric analysis of hexokinase1 expression in HT-1080 cells using anti-hexokinase1 antibody (Cat#4144, 1:2,000). Green, isotype control; red, hexokinase1.

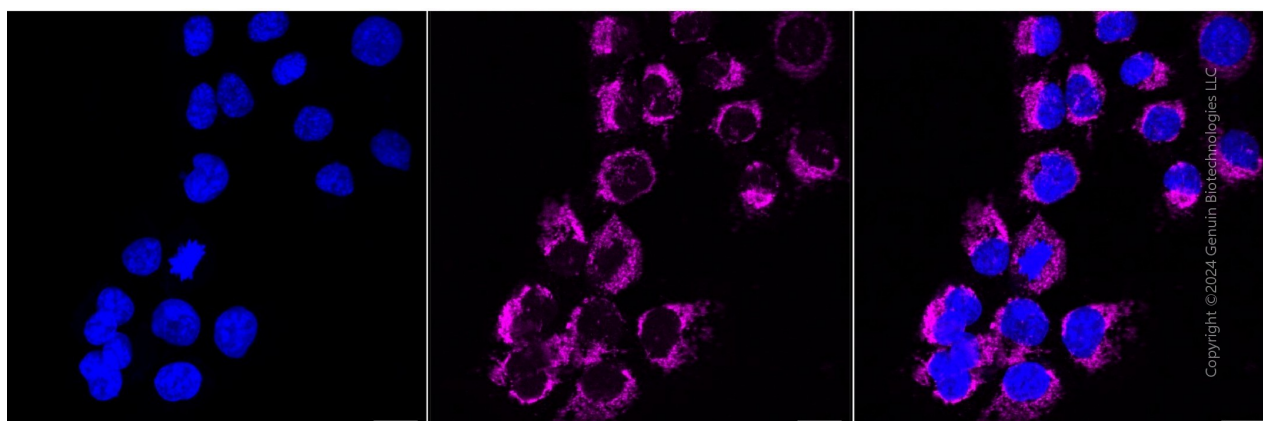
SUPPORT

SUPPORT@GENUINBIOTECH.COM
TEL: +1-540-855-7041

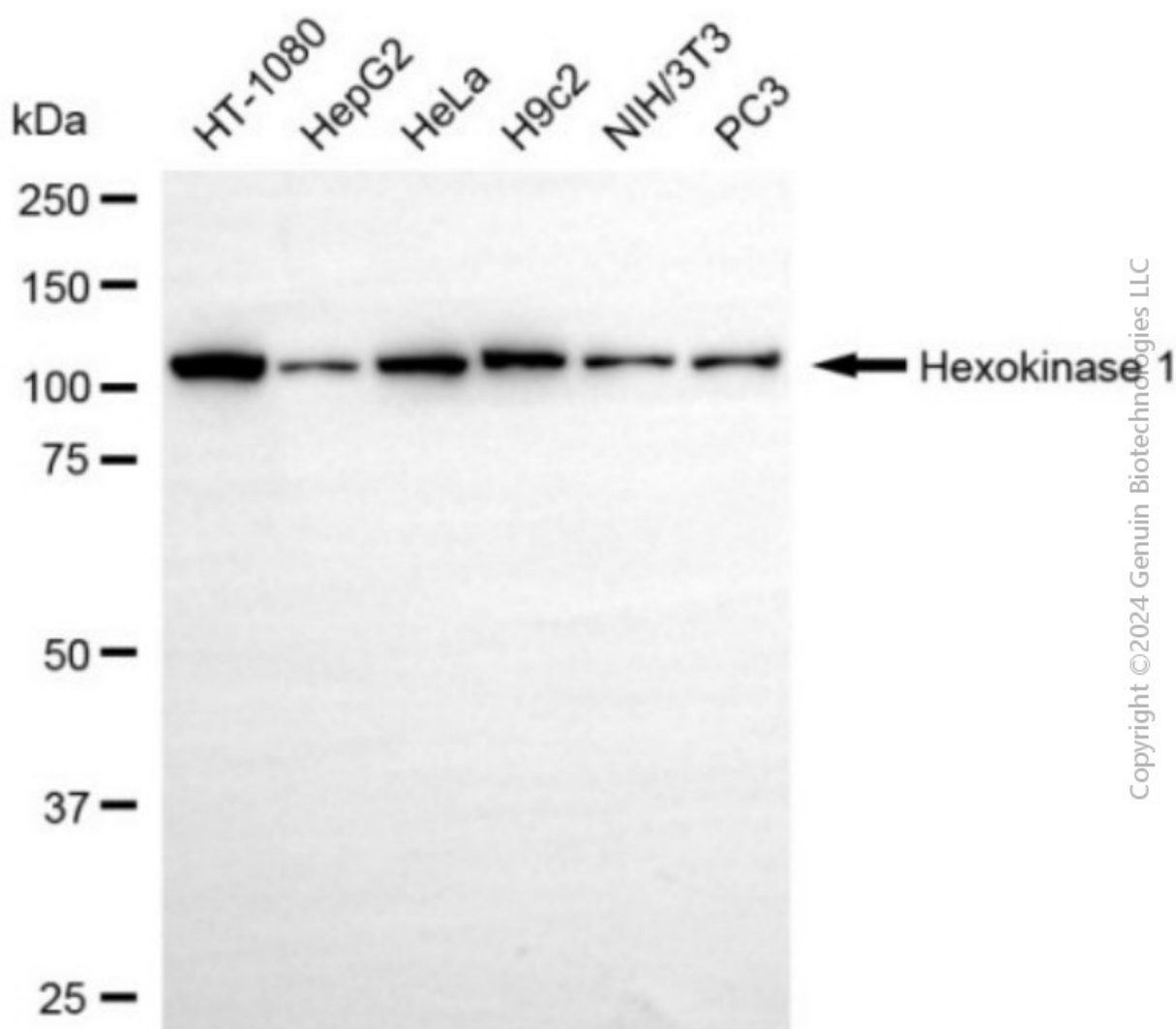
ORDERS

SALES@GENUINBIOTECH.COM
FAX: +1-540-855-7041

WWW.GENUINBIOTECH.COM



Immunocytochemical staining of HT-1080 cells with anti-Hexokinase antibody(Cat#4144, 1:1,000) . Nuclei were stained blue with DAPI; Hexokinase was stained magenta with Alexa Fluor® 647. Images were taken using Leica stellaris 5. Protein abundance based on laser Intensity and smart gain: High. Scale bar, 20 μ m.



Anti-Hexokinase 1 Recombinant Rabbit Monoclonal Antibody

PAGE 4

Western blotting analysis using anti-hexokinase 1 antibody (Cat#4144). Total cell lysates (30 µg) from various cell lines were loaded and separated by SDS-PAGE. The blot was incubated with anti-hexokinase 1 antibody (Cat#4144, 1:5,000) and HRP-conjugated goat anti-rabbit secondary antibody (Cat#201, 1:20,000) respectively. Image was developed using NaQ™ ECL Substrate Kit (Cat#716).

SUPPORT

SUPPORT@GENUINBIOTECH.COM
TEL: +1-540-855-7041

ORDERS

SALES@GENUINBIOTECH.COM
FAX: +1-540-855-7041

WWW.GENUINBIOTECH.COM