

# Anti-Early endosome antigen 1 Recombinant Rabbit Monoclonal Antibody



**Catalog #: 4153**

## Aliases

EEA1; Early Endosome Antigen 1; ZFYVE2; Zinc Finger FYVE Domain-Containing Protein; Endosome-Associated Protein P162; Early Endosome Antigen 1, 162kD; Early Endosome-Associated Protein; MSTP105; MST105

## Background

Gene Name: EEA1

NCBI Gene Entry: [8411](#)

UniProt Entry: [Q15075](#)

## Application Information

Molecular Weight: Predicted, 162 kDa; observed, 170 kDa

Clonality: Rabbit monoclonal antibody

Clone ID: 24GB9820

Species Reactivity: Human, mouse, rat

Applications Tested: Western blotting (WB), flow cytometry (FCM), immunocytochemistry (IC)

## Immunogen

A synthesized peptide derived from human EEA1

## Isotype

Rabbit IgG

## Storage Buffer

Supplied in PBS (pH 7.4) containing 50% glycerol, and 0.02% sodium azide.

## Storage

Store at -20 °C for one year.

## Recommended Dilutions

Western Blotting (WB): 1:1,000-1:5,000

Flow Cytometry (FCM): 1:2,000

Immunocytochemistry (IC): 1:100-1:1,000

**Note:** This product is for research use only.

---

### SUPPORT

SUPPORT@GENUINBIOTECH.COM  
TEL: +1-540-855-7041

### ORDERS

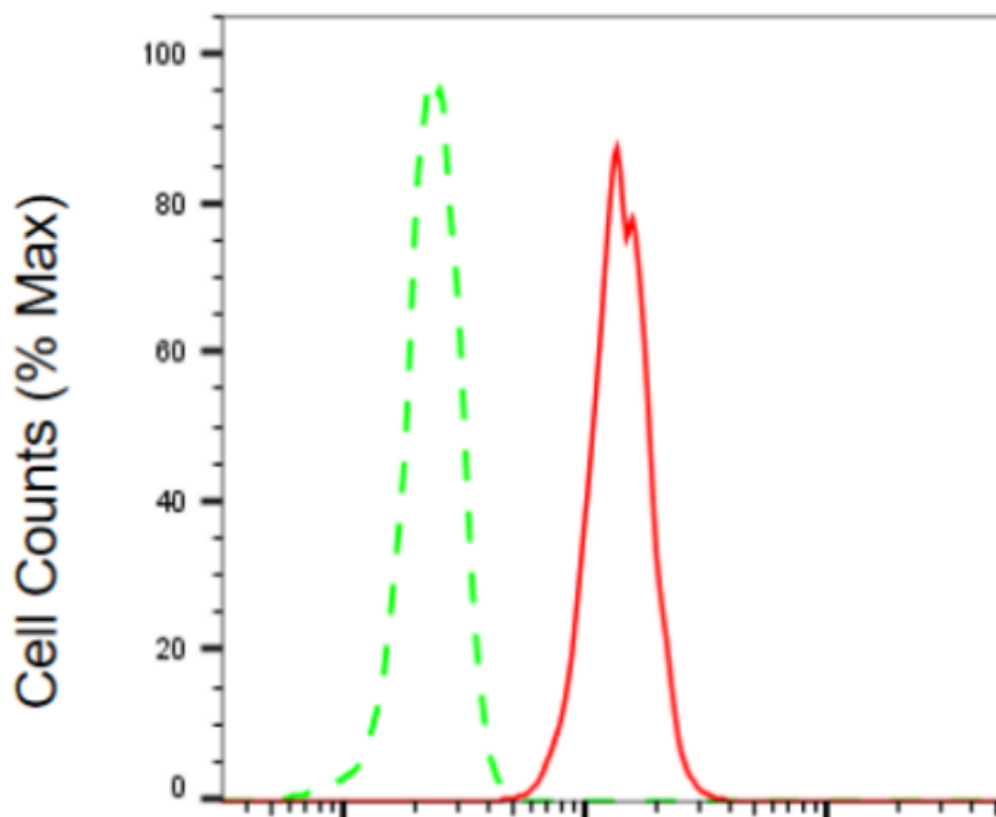
SALES@GENUINBIOTECH.COM  
FAX: +1-540-855-7041

[WWW.GENUINBIOTECH.COM](http://WWW.GENUINBIOTECH.COM)

# Anti-Early endosome antigen 1 Recombinant Rabbit Monoclonal Antibody

PAGE 2

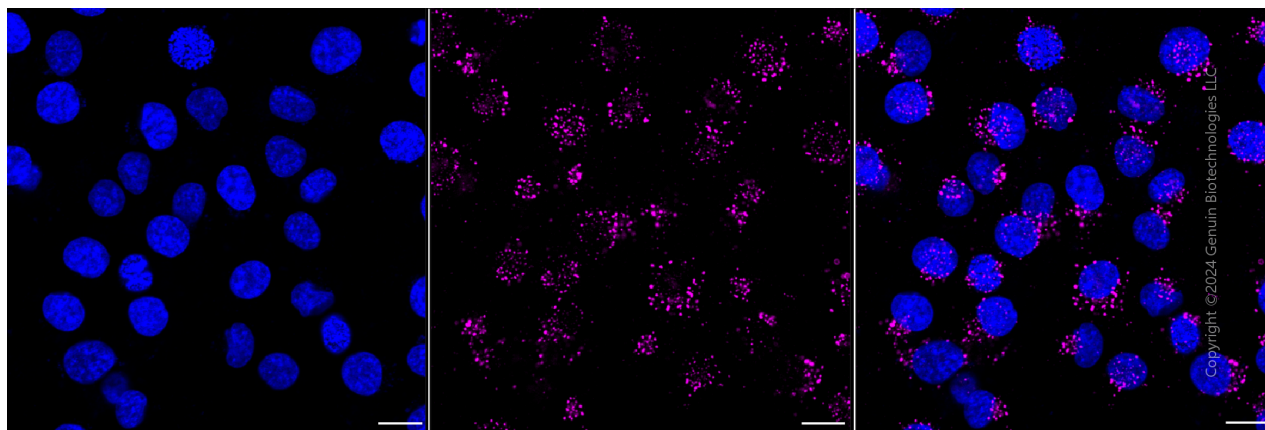
## Validation Data



Copyright ©2024 Genuin Biotechnologies LLC

### Early endosome antigen 1-Alexa Fluor® 647

Flow cytometric analysis of early endosome antigen 1 expression in HT-1080 cells using anti-early endosome antigen 1 antibody (Cat#4153, 1:2,000). Green, isotype control; red, early endosome antigen 1.



Copyright ©2024 Genuin Biotechnologies LLC

Immunocytochemical staining of HT-1080 cells with anti-early endosome antigen 1 antibody

#### SUPPORT

SUPPORT@GENUINBIOTECH.COM  
TEL: +1-540-855-7041

#### ORDERS

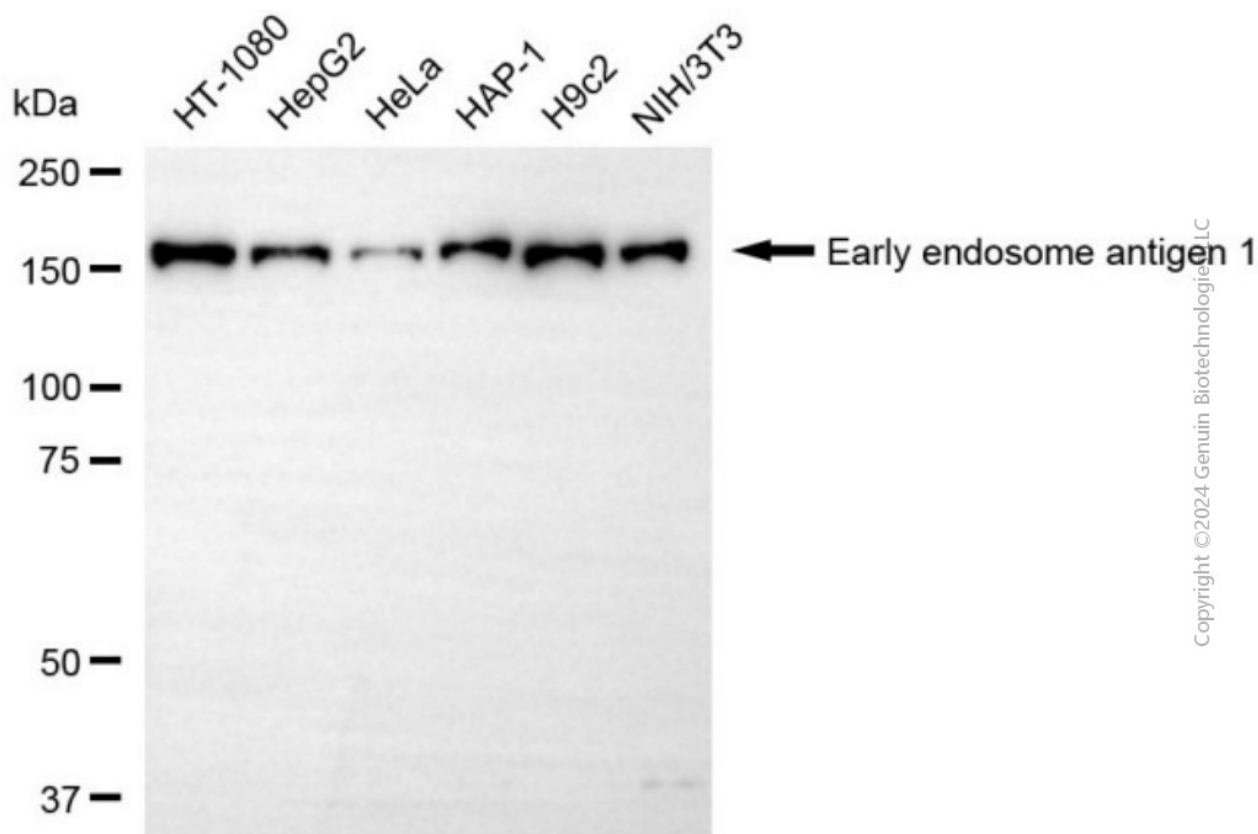
SALES@GENUINBIOTECH.COM  
FAX: +1-540-855-7041

WWW.GENUINBIOTECH.COM

## Anti-Early endosome antigen 1 Recombinant Rabbit Monoclonal Antibody

PAGE 3

(Cat#4153, 1:1,000). Nuclei were stained blue with DAPI; Early endosome antigen 1 was stained magenta with Alexa Fluor® 647. Images were taken using Leica stellaris 5. Protein abundance based on laser Intensity and smart gain: Medium. Scale bar, 20  $\mu$ m.



Western blotting analysis using anti-early endosome antigen 1 antibody (Cat#4153). Total cell lysates (30  $\mu$ g) from various cell lines were loaded and separated by SDS-PAGE. The blot was incubated with anti-early endosome antigen 1 antibody (Cat#4153, 1:5,000) and HRP-conjugated goat anti-rabbit secondary antibody (Cat#201, 1:20,000) respectively. Image was developed using NaQ™ ECL Substrate Kit (Cat#716).

### SUPPORT

SUPPORT@GENUINBIOTECH.COM  
TEL: +1-540-855-7041

### ORDERS

SALES@GENUINBIOTECH.COM  
FAX: +1-540-855-7041

WWW.GENUINBIOTECH.COM