

# Anti-Smad2 Recombinant Rabbit Monoclonal Antibody



**Catalog #: 4160**

## Aliases

JV18-1; MADR2; MADH2; Mothers Against Decapentaplegic Homolog 2; MAD Homolog 2; HMD-2; HSMAD2; MAD, Mothers Against Decapentaplegic Homolog 2 (Drosophila); SMAD, Mothers Against DPP Homolog 2 (Drosophila); Sma-And Mad-Related Protein 2; Mothers Against DPP Homolog 2; Mother Against DPP Homolog 2; Mad-Related Protein 2; SMAD 2; CHTD8; Smad2; JV18; LDS6

## Background

Gene Name: SMAD2

NCBI Gene Entry: [4087](#)

UniProt Entry: [Q15796](#)

## Application Information

Molecular Weight: Predicted, 52 kDa; observed, 58 kDa

Clonality: Rabbit monoclonal antibody

Clone ID: 24GB9855

Species Reactivity: Human, mouse, rat

Applications Tested: Western blotting (WB), flow cytometry (FCM), immunocytochemistry (IC)

## Immunogen

A synthesized peptide derived from human smad2

## Isotype

Rabbit IgG

## Storage Buffer

Supplied in PBS (pH 7.4) containing 50% glycerol, and 0.02% sodium azide.

## Storage

Store at -20 °C for one year.

## Recommended Dilutions

Western Blotting (WB): 1:1,000-1:5,000

Flow Cytometry (FCM): 1:2,000

Immunocytochemistry (IC): 1:100-1:1,000

---

### SUPPORT

SUPPORT@GENUINBIOTECH.COM  
TEL: +1-540-855-7041

### ORDERS

SALES@GENUINBIOTECH.COM  
FAX: +1-540-855-7041

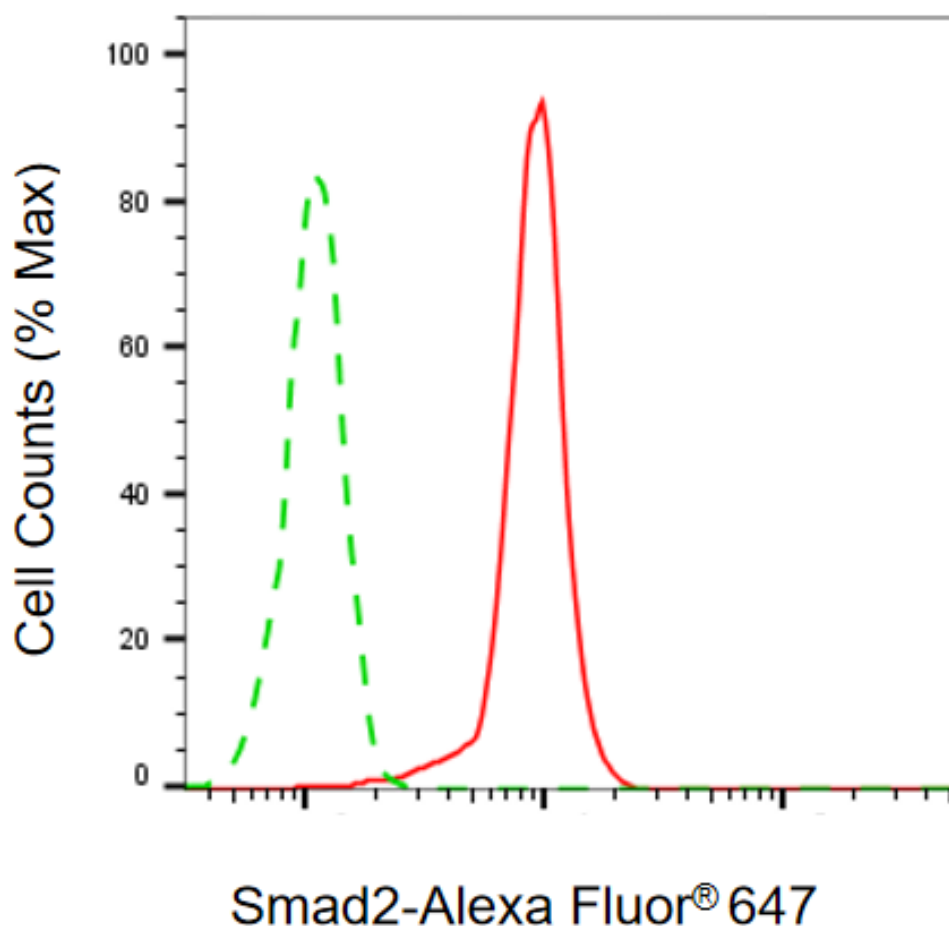
[WWW.GENUINBIOTECH.COM](http://WWW.GENUINBIOTECH.COM)

# Anti-Smad2 Recombinant Rabbit Monoclonal Antibody

PAGE 2

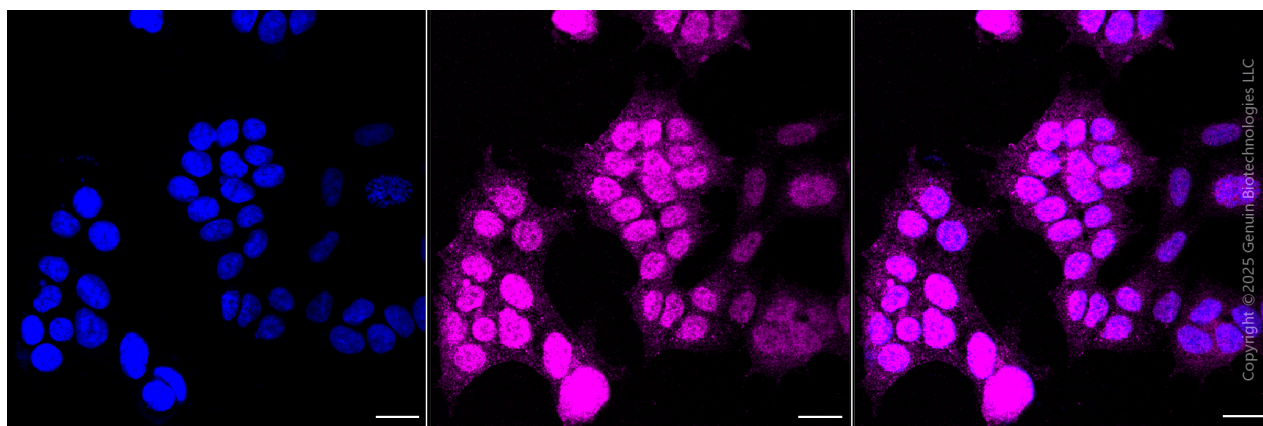
**Note:** This product is for research use only.

## Validation Data



Copyright ©2025 Genuin Biotechnologies LLC

Flow cytometric analysis of Smad2 expression in HAP-1 cells using anti-Smad2 antibody (Cat#4160, 1:2,000). Green, isotype control; red, Smad2.



Copyright ©2025 Genuin Biotechnologies LLC

### SUPPORT

SUPPORT@GENUINBIOTECH.COM  
TEL: +1-540-855-7041

### ORDERS

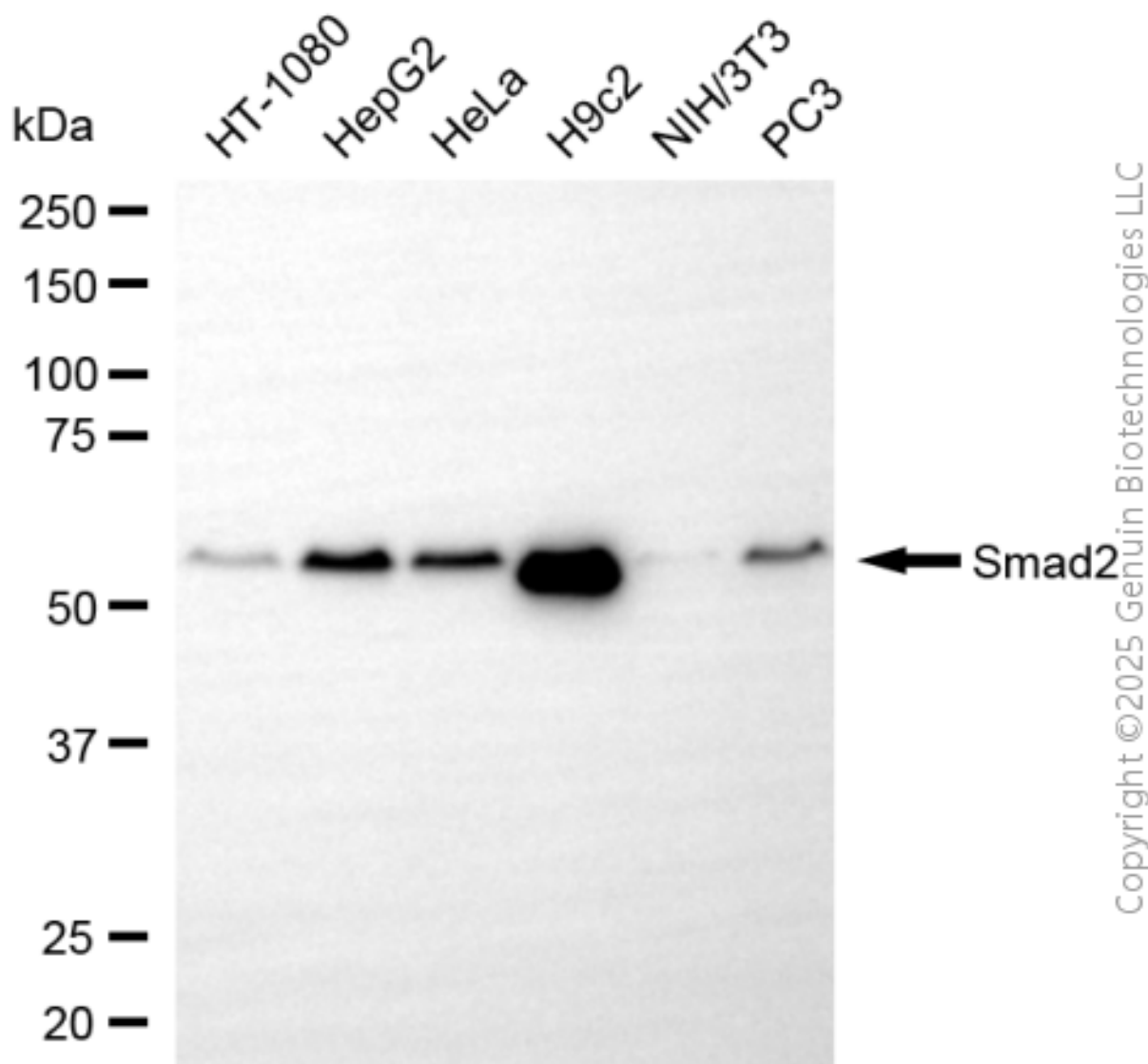
SALES@GENUINBIOTECH.COM  
FAX: +1-540-855-7041

WWW.GENUINBIOTECH.COM

## Anti-Smad2 Recombinant Rabbit Monoclonal Antibody

PAGE 3

Immunocytochemical staining of HAP-1 cells with anti-smad2 antibody (Cat#4160, 1:1,000). Nuclei were stained blue with DAPI; Smad2 was stained magenta with Alexa Fluor® 647. Images were taken using Leica stellaris 5. Protein abundance based on laser Intensity and smart gain: Medium. Scale bar, 20  $\mu$ m.



Western blotting analysis using anti-smad2 antibody (Cat#4160). Total cell lysates (30  $\mu$ g) from various cell lines were loaded and separated by SDS-PAGE. The blot was incubated with anti-smad2 antibody (Cat#4160, 1:5,000) and HRP-conjugated goat anti-rabbit secondary antibody (Cat#201, 1:20,000) respectively. Image was developed using NaQ™ ECL Substrate Kit (Cat#716).

### SUPPORT

SUPPORT@GENUINBIOTECH.COM  
TEL: +1-540-855-7041

### ORDERS

SALES@GENUINBIOTECH.COM  
FAX: +1-540-855-7041

WWW.GENUINBIOTECH.COM